



# Gorton Station

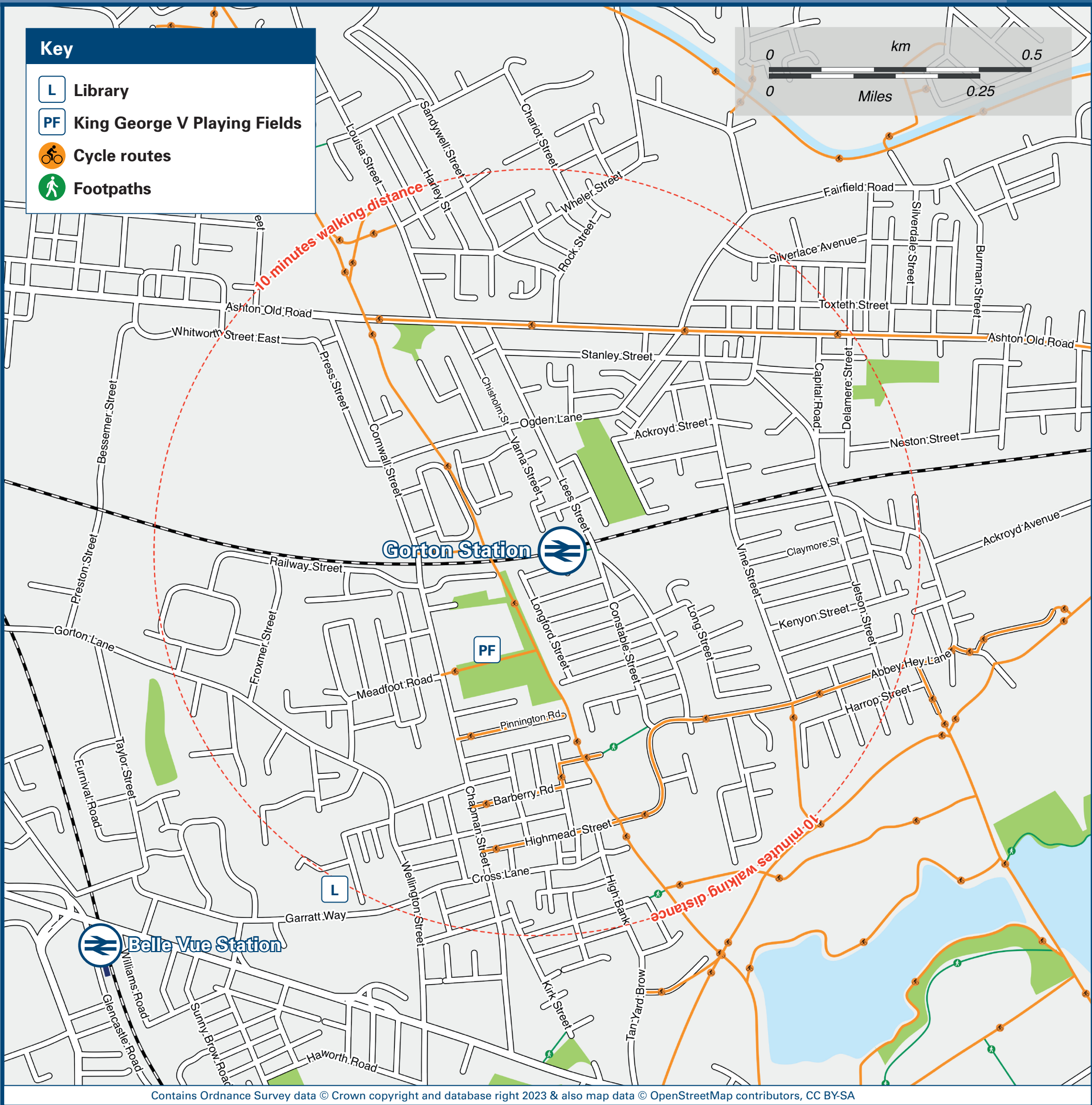
## Onward Travel Information

### Buses



Rail replacement buses depart from the lay-by located on the overbridge, approximately 50 yards from the station entrance.

### Local area map



### Main destinations by bus

(Data correct at November 2023)



DESTINATION	BUS ROUTES	BUS STOP
Arrowfield Estate	172#	A
Ashton Moss	7	C
Ashton-under-Lyne (Interchange)	7	C
Brookdale Park	171, 172	B
Burnage (Burnage Lane)	172	A
Burnage (Parrs Wood Road)	171, 172	A
Chorlton	172#	A
Clayton	171, 172	B
Dane Bank (Windmill Lane Shops)	7	D
Debdale Park (Hyde Road)	7	D
Didsbury Village	171	A

DESTINATION	BUS ROUTES	BUS STOP
Droylsden	7	C
East Didsbury	171	A
Fairfield	7	C
Gorton Shopping Centre	7	D
Heaton Chapel	7	D
Higher Openshaw	7	C
Levenshulme	171, 172	A
Newton Heath	171, 172	B
North Reddish	7	D

DESTINATION	BUS ROUTES	BUS STOP
Openshaw	171, 172	B
Reddish	7	D
Ryder Brow	171, 172	A
South Reddish	7	D
Stockport	7	D
West Didsbury	172	A

#### Notes

Bus routes 7 and 172 operate daily.  
Bus route 171 operates Mondays to Saturdays.  
For bus times please see bus stop timetables or contact Traveline on 0871 200 22 33.  
Direct trains operate to this destination from this station.  
# Bus route 172 operates to Chorlton Bus Station and the Arrowfield Estate on Sundays and public holidays only.

### Taxis

Gorton station has no taxi rank or cab office. Advance booking is essential, please consider using the following local operators: (Inclusion of this number doesn't represent any endorsement of the taxi firm)

**Mantax Taxis**  
0161 230 3333

**Hastings Private Hire**  
0161 223 1066

**On Time Taxis**  
0161 370 8557

### Further information about all onward travel

<b>Local Cycle Info</b> <a href="http://manchester.gov.uk">manchester.gov.uk</a> For more information about cycle routes.	<b>National Cycle Info</b> <a href="http://sustrans.org.uk">sustrans.org.uk</a> Sustrans is the UK's leading sustainable transport charity.	<b>Bus Times</b> See timetable displays at bus stops. <a href="http://www.traveline.info">www.traveline.info</a> 0871 200 22 33 calls cost 15p per minute plus your phone company's access charge	<b>NextBuses</b> Find the bus times for your stop. Search for a bus stop by entering a postcode, street & town or a stop name & town.	<b>PlusBus</b> <a href="http://plusbus.info">plusbus.info</a> A discount price 'bus pass' that you buy with your train ticket. It gives you unlimited bus travel around your chosen town, on participating buses.
---	---	---	---	---

### National Rail Enquiries

<b>Online</b> <a href="http://nationalrail.co.uk">nationalrail.co.uk</a>	<b>NRE App</b> Free National Rail Enquiries app for iOS and Android	<b>Social Media</b> facebook.com/nationalrailenq @nationalrailenq	<b>Alert Me</b> You can sign up to Alert Me messages on the National Rail Enquiries website where you can receive train and platform notifications directly to your smart phone. <a href="http://nationalrail.co.uk/alertme">nationalrail.co.uk/alertme</a>	<b>Contact Centre</b> 03457 48 49 50 Calls cost no more than calls to geographic numbers (01 or 02) and may be recorded.	<b>PlusBike</b> <a href="http://nationalrail.co.uk/plusbike">nationalrail.co.uk/plusbike</a> For more information.
---	--	---	---	--	--



NORTHERN



**National Rail**  
Britain's train companies working together



This poster shows details of popular destinations and main, frequent bus routes. Additional services may run, so please check with Traveline or see posters at local bus stops. Whilst considerable care has been taken to ensure the information contained on this poster is correct and accurate, National Rail cannot accept responsibility for any loss or inconvenience caused by any errors or omissions, or for loss, damage, injury or inconvenience relating to the cancellation, alteration, delay or diversion of a service. For any feedback, please e-mail [comments@onwardtravelposters.com](mailto:comments@onwardtravelposters.com)

Scan this code with your mobile for full station information.