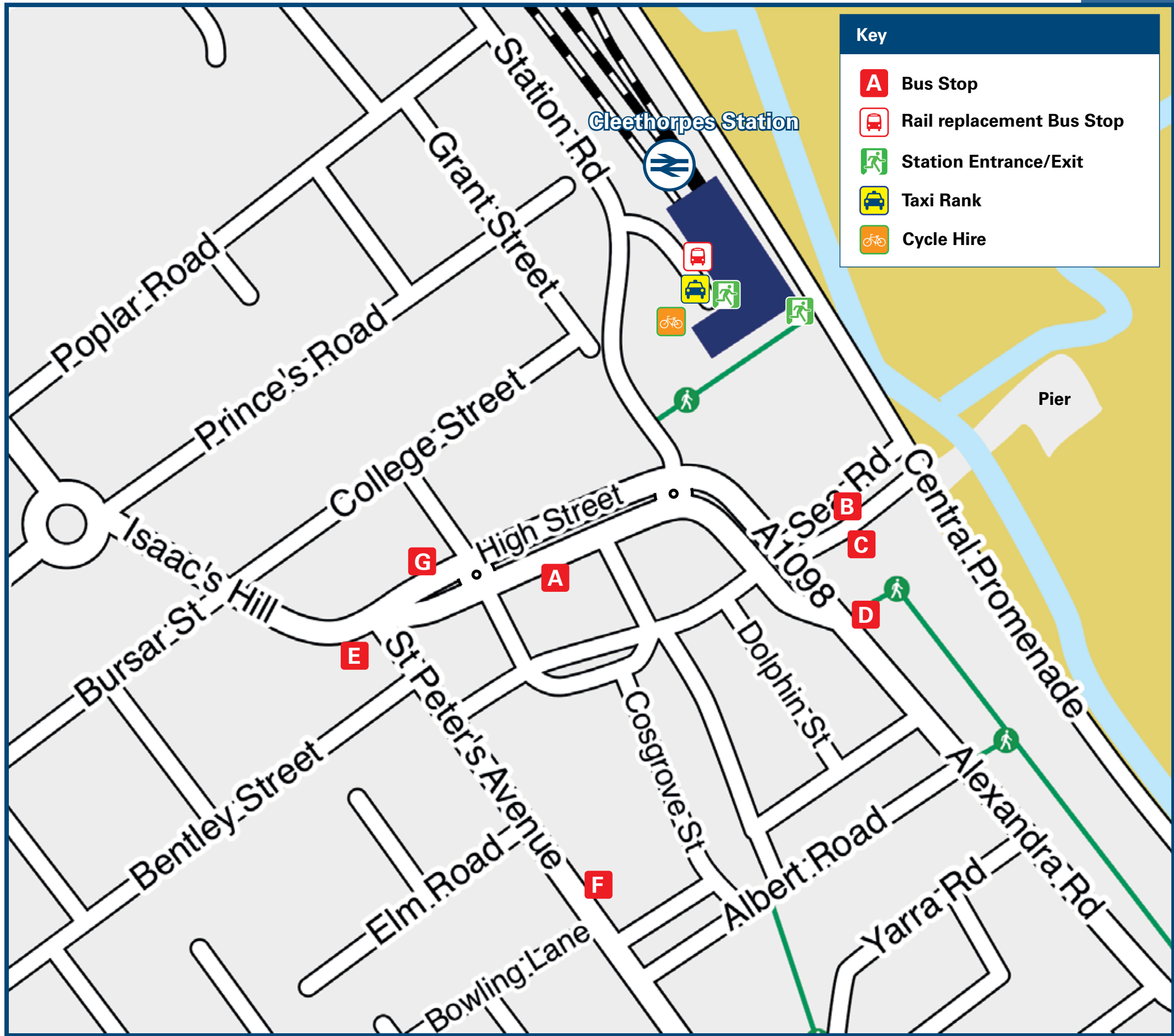




# Cleethorpes Station

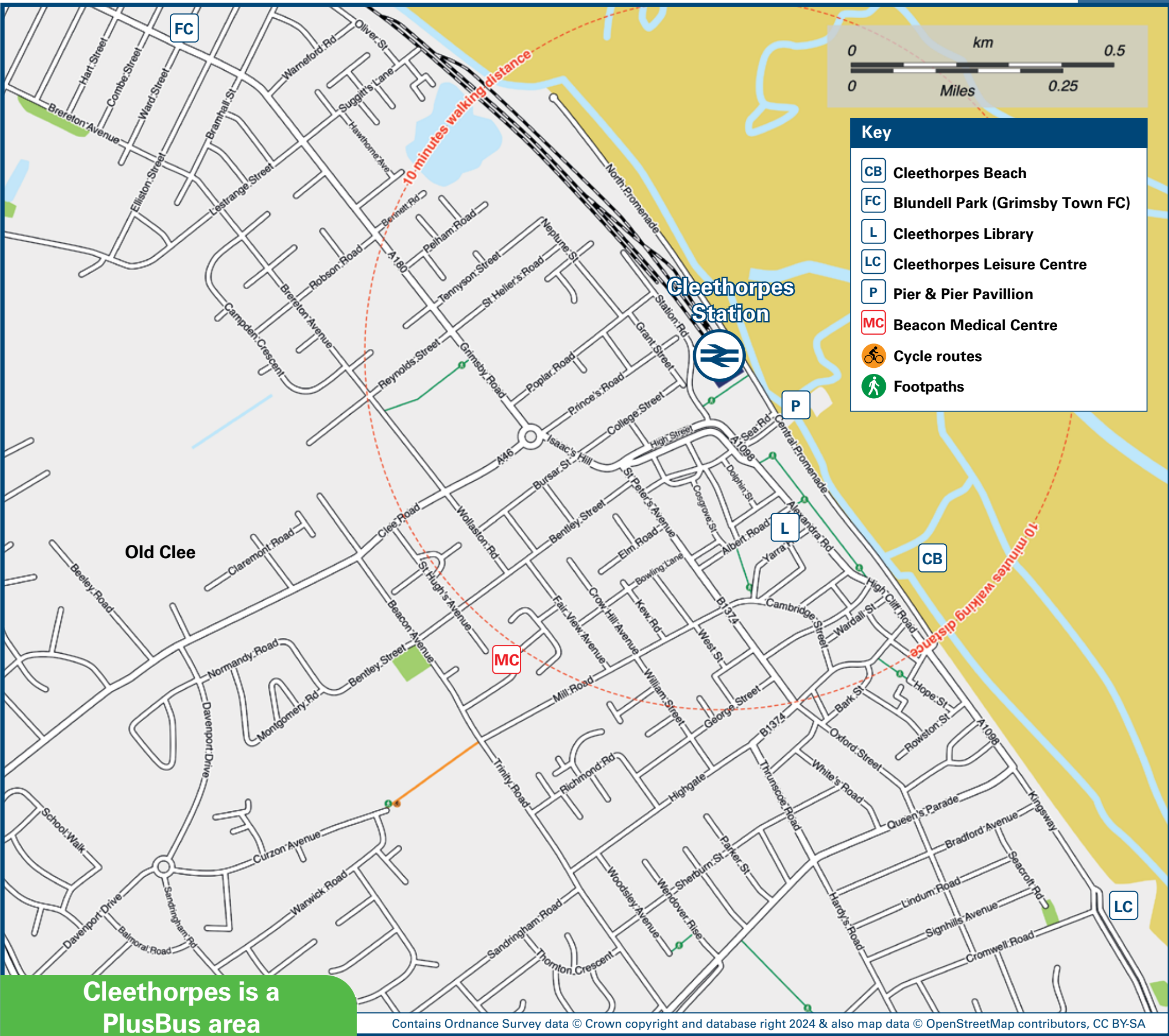
## Onward Travel Information

### Buses and Taxis



Rail replacement services depart from the station car park.

### Local area map



**PlusBus** is a discount price 'bus pass' that you buy with your train ticket. It gives you unlimited bus travel around your chosen town, on participating buses. Visit [www.plusbus.info](http://www.plusbus.info)

### Main destinations by bus



DESTINATION	BUS ROUTES	BUS STOP
● Blundell Park (Grimsby Town FC)	3 3, 9, 10, 20+	B A
● Bradley	3, 4 3	B A
● Bradley Park	12	E
● Cleethorpes (Belvoir Road)	12	F
● Cleethorpes (Leisure Centre)	8, 9, 10 9, 10 17*	D G C
● Diana Prince of Wales Hospital	9, 10	A
● Grange Estate	12 3, 4 6, 20+	E B C
● Grimsby (Town Centre)	3, 6, 9, 10, 20+ 3, 6, 9, 10, 12, 20+	A E
● Humberston (North Sea Lane)	8, 9, 10 9, 10	D G

DESTINATION	BUS ROUTES	BUS STOP
● Humberston Road (Hewitts Avenue/Tesco)	9, 10 12	D, G F
● Laceby Acres	4	B
● Little Coates	4 17*	B C
● Meridian Point Retail & Leisure Park	8, 9, 10 9, 10	D G
● New Waltham	8 12 17*	D F C
● North Sea Lane / Kings Road (for Holiday Parks)	8, 9, 10 9, 10	D G
● Nuns Corner	3, 9, 10	A
● Nunsthorpe	3 3, 12	A, B E
● Old Clew	4 6	B A, C
● Scartho (Springfield Road)	9, 10	A

DESTINATION	BUS ROUTES	BUS STOP
● Thorpe Park (Main Entrance)	17*	C
● Thorpe Park (Recreational Centre)	17*	C
● Thrunscow Estate	9, 10	D, G
● Waltham	9, 10 4	A B
● Weelsby	6, 20+	A, C
● West Marsh	6, 20+	A, C
● Wybers Wood	6, 20+	A, C

#### Notes

- **PLUSBUS** destination, please see below for details.
- Bus routes 3, 4, 6, 8 and 10 operate daily, Mondays to Sundays.
- Bus routes 9 and 12 operate Mondays to Saturdays. No service on Sundays or Bank Holidays.
- For bus times and other bus service enquiries, please contact Traveline on 0871 200 22 33 or Stagecoach East Midlands (for all bus routes on this poster) call 0345 241 8000.
- Direct trains operate to this destination from this Station.
- Alight bus at Cleethorpes Leisure Centre for the Cleethorpes Coast Light Railway Kingsway Station.
- \* Bus route 17 operates all weekends and daily in Summer School Holidays from April to September only.
- + Bus route 20 operates a limited service early mornings and late evenings Mondays to Saturdays only.
- @ Additional bus services operate from Grimsby Town Centre, Riverhead Exchange (Bus Stands), contact Traveline for details.

### Taxis

Cleethorpes station is served by a taxi rank or cab office. Check availability before travelling, and pre-book if necessary. Please consider using the following local operators: (Inclusion of this number doesn't represent any endorsement of the taxi firm)

**AA Taxis**  
01472 696 969

**Cleethorpes Cars**  
01472 600 600

**Taxi Cabs**  
01472 343 434

#### Further information about all onward travel

##### Local Cycle Info

[nelincs.gov.uk](http://nelincs.gov.uk)

For more information about cycle routes.

##### National Cycle Info

[sustrans.org.uk](http://sustrans.org.uk)

Sustrans is the UK's leading sustainable transport charity.

##### Bus Times

See timetable displays at bus stops.

[www.traveline.info](http://www.traveline.info)  
0871 200 22 33  
calls cost 15p per minute plus your phone company's access charge

##### NextBuses

**Find the bus times for your stop.**

Search for a bus stop by entering a postcode, street & town or a stop name & town.

##### PlusBus



[plusbus.info](http://plusbus.info)

A discount price 'bus pass' that you buy with your train ticket. It gives you unlimited bus travel around your chosen town, on participating buses.

#### National Rail Enquiries

##### Online

[nationalrail.co.uk](http://nationalrail.co.uk)

##### NRE App

Free National Rail Enquiries app for iOS and Android

##### Social Media

[facebook.com/nationalrailenq](https://facebook.com/nationalrailenq)  
 @nationalrailenq

##### Alert Me

You can sign up to Alert Me messages on the National Rail Enquiries website where you can receive train and platform notifications directly to your smart phone.  
[nationalrail.co.uk/alertme](http://nationalrail.co.uk/alertme)

##### Contact Centre

03457 48 49 50

Calls cost no more than calls to geographic numbers (01 or 02) and may be recorded.

##### PlusBike



[nationalrail.co.uk/plusbike](http://nationalrail.co.uk/plusbike)

For more information.



**National Rail**  
Britain's train companies working together

