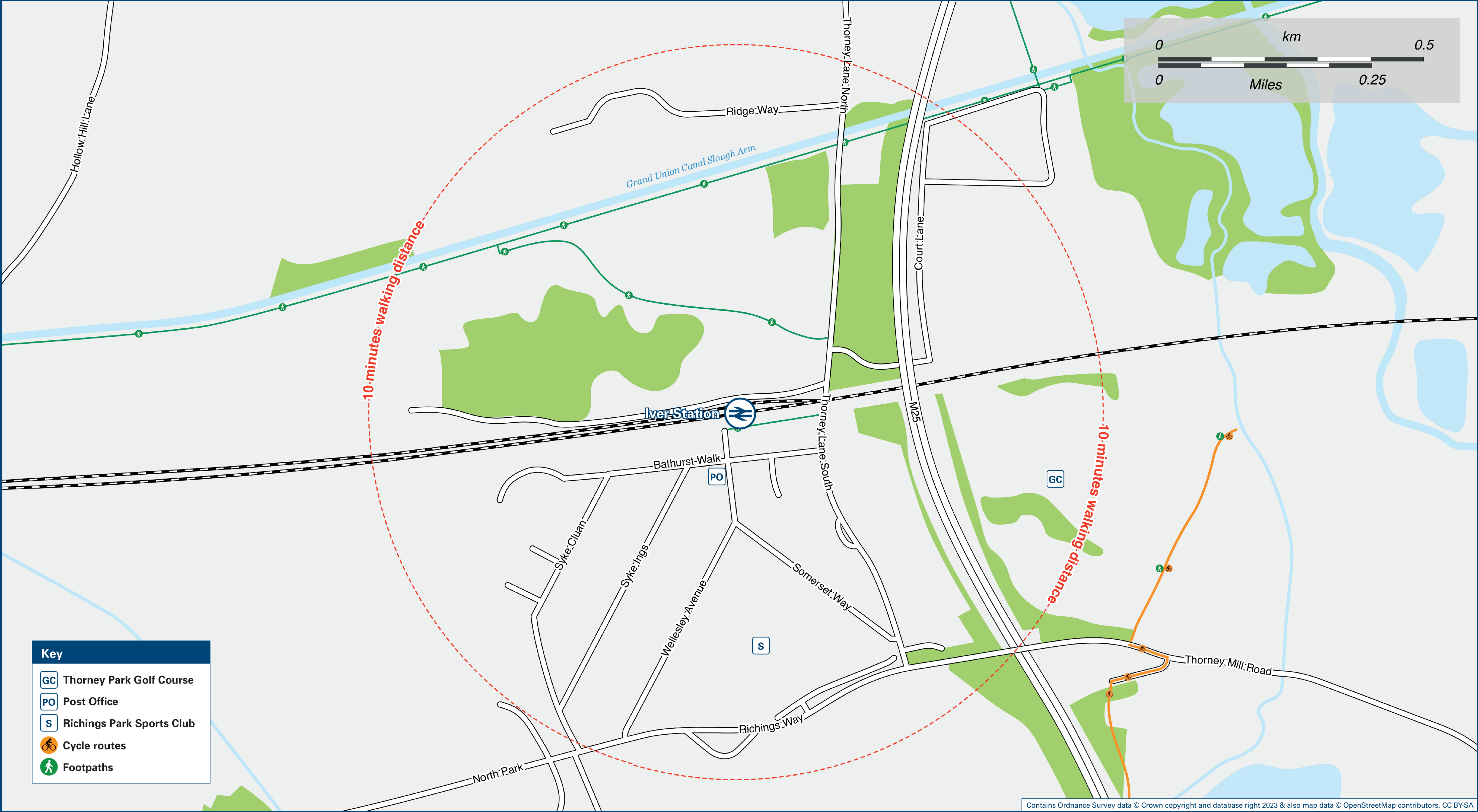




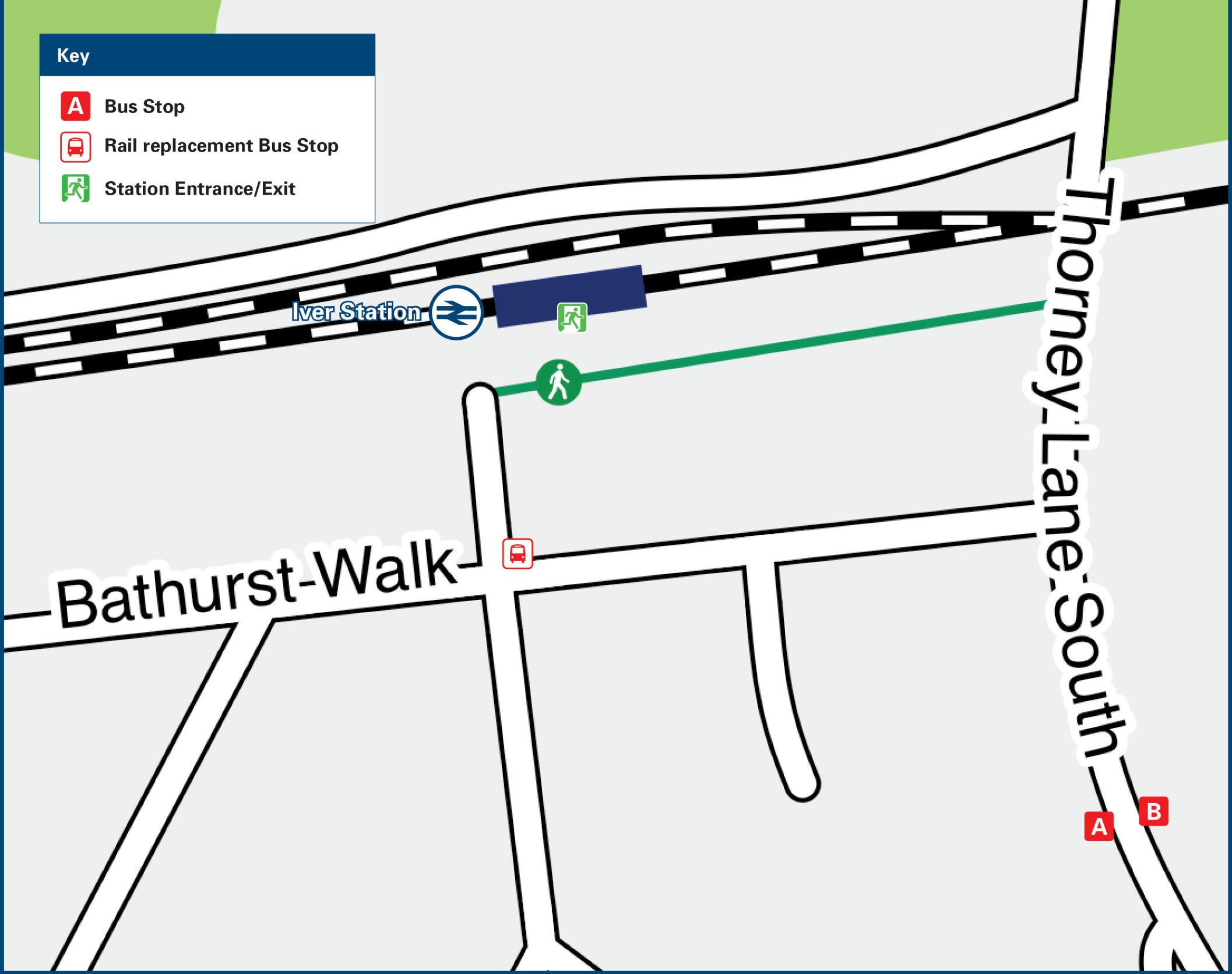
Iver Station

Onward Travel Information

Local area map



Buses



 Rail replacement services from the bus layby, at the front of the station.

Information

(Data correct at June 2022)

THERE ARE NO REGULAR BUS SERVICES SERVING IVER RAILWAY STATION.

Iver Station has no taxi rank or cab office. Advance booking is essential, please consider using the following local operators: (Inclusion of this number doesn't represent any endorsement of the taxi firm)

247 Cars
01895 247 247

Iver Minicab
01895 379 827

Viking Cars 511
01753 511 511

Further information about all onward travel

Local Cycle Info	National Cycle Info	Bus Times	NextBuses	PlusBus
www.buckinghamshire.gov.uk For more information on bus routes and cycling.	sustrans.org.uk Sustrans is the UK's leading sustainable transport charity.	See timetable displays at bus stops.  www.traveline.info 0871 200 22 33 <small>calls cost 1p per minute plus your phone company's access charge</small>	 Find the bus times for your stop. Search for a bus stop by entering a postcode, street & town or a stop name & town.	 plusbus.info A discount price 'bus pass' that you buy with your train ticket. It gives you unlimited bus travel around your chosen town, on participating buses.

National Rail Enquiries

Online	NRE App	Social Media	Alert Me	Contact Centre	PlusBike
nationalrail.co.uk	Free National Rail Enquiries app for iOS and Android	 facebook.com/nationalrailenq  @nationalrailenq	You can sign up to Alert Me messages on the National Rail Enquiries website where you can receive train and platform notifications directly to your smart phone. nationalrail.co.uk/alertme	03457 48 49 50 Calls cost no more than calls to geographic numbers (01 or 02) and may be recorded.	 nationalrail.co.uk/plusbike For more information.

