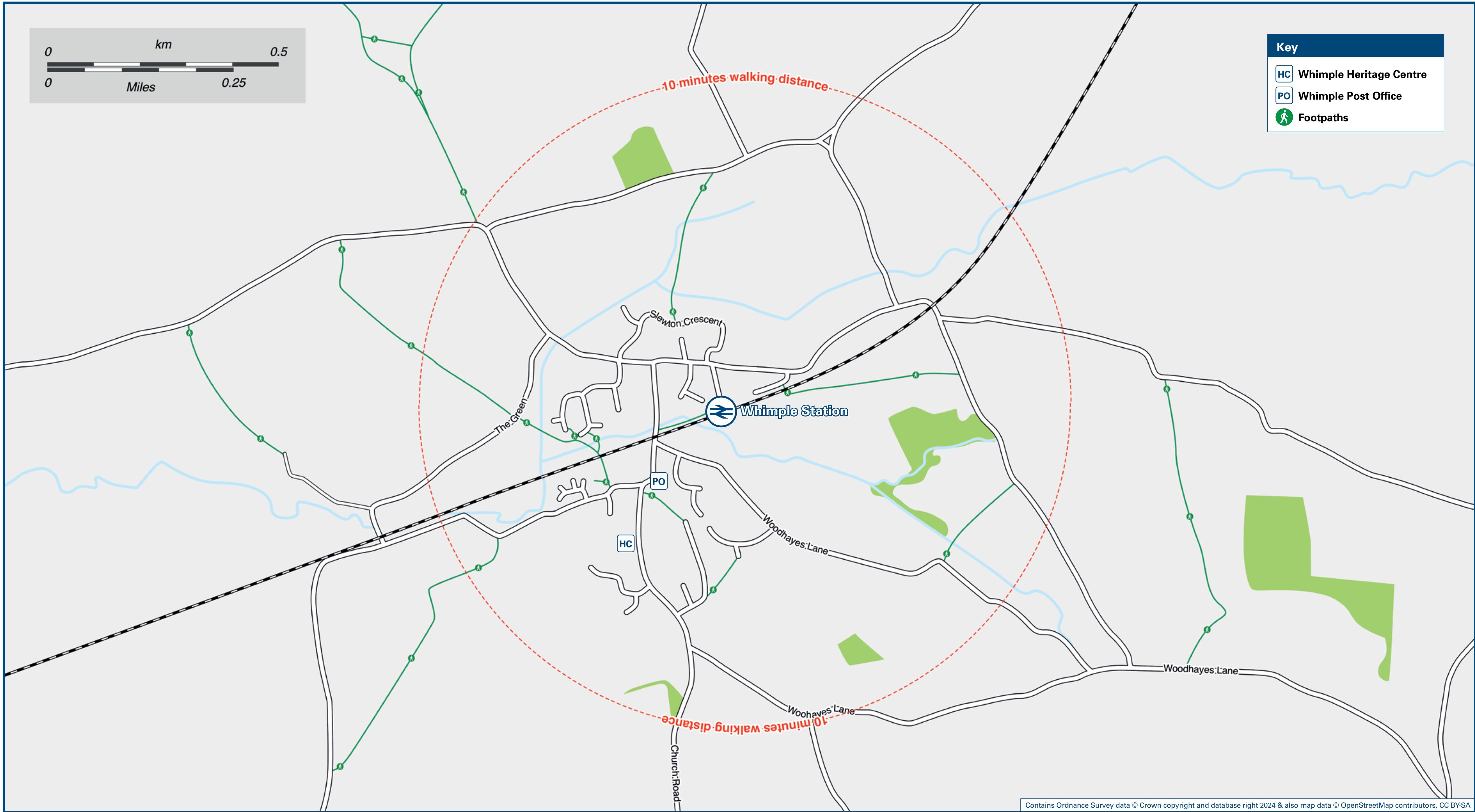




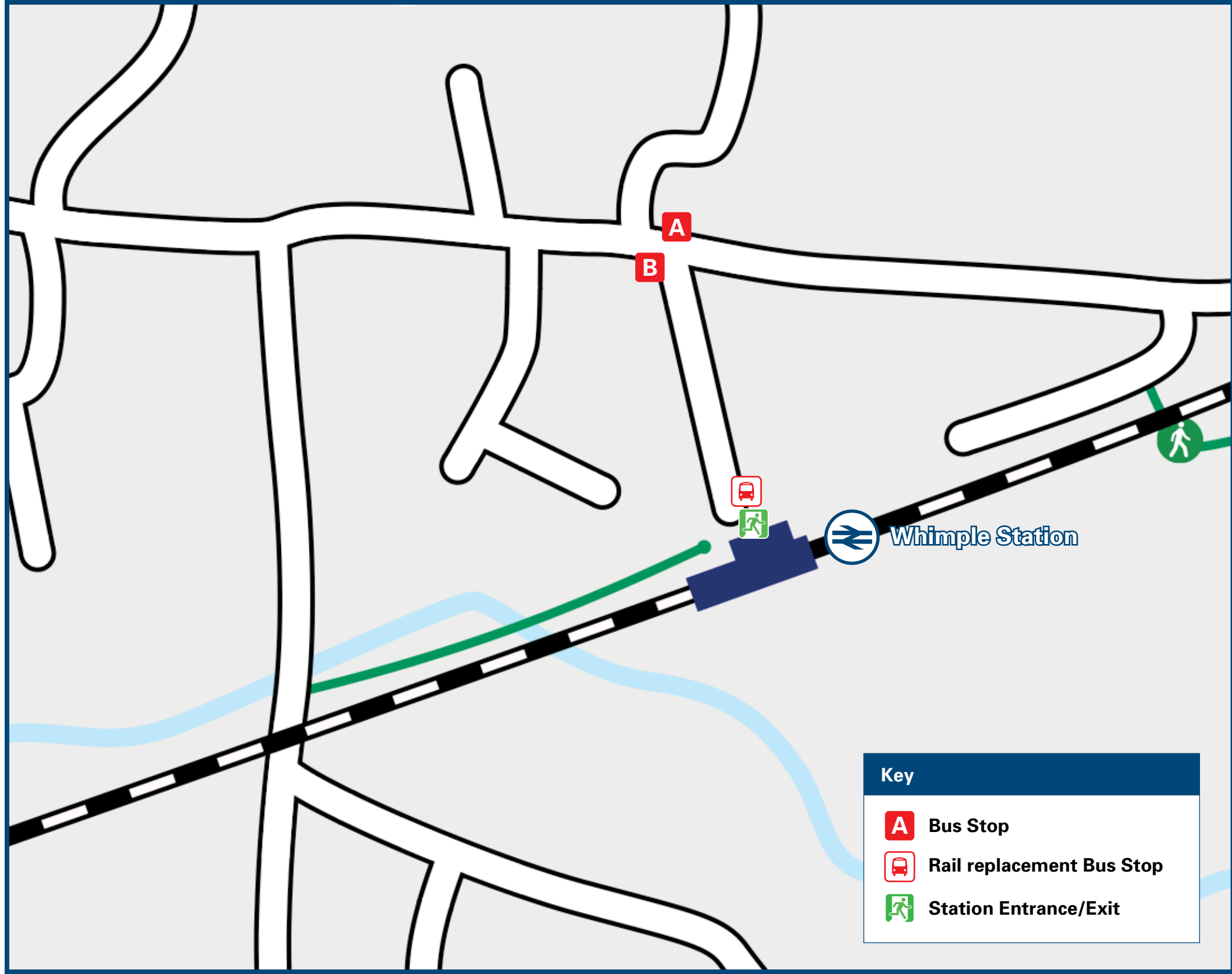
# Whimble Station

## Onward Travel Information

### Local area map



### Buses



Rail replacement buses/coaches will depart from the stop/turn in forecourt area (Station Road).

### Main destinations by bus

(Data correct at October 2024)



DESTINATION	BUS ROUTES	BUS STOP
Feniton	382	A **
Fenny Bridges	382	A **
Ottery St Mary	382	A, B *
Ottery St Mary Hospital	382	A, B *
Sidmouth	382	A, B *
Talaton	382	A **
Tipton St John	382	A, B *

#### Notes

Service 382 is a very limited service running Mondays to Saturdays only, for times please contact Traveline or see times at bus stops.  
Direct trains operate to this destination from this Station.  
\* Buses depart from stop {A} until 1100, and from stop {B} after 1100.  
\*\* 2 morning journeys only

### Taxis

Whimble station has no taxi rank or cab office. Advance booking is essential, please consider using the following local operators: (Inclusion of this number doesn't represent any endorsement of the taxi firm)

**Horseshoe**  
01404 850 800

**Tony's Taxi**  
07980 767 302

**A2B Exeter**  
01392 666 677

### Further information about all onward travel

#### Local Cycle Info

[eastdevon.gov.uk](http://eastdevon.gov.uk)  
For more information about cycle routes.

#### National Cycle Info

[sustrans.org.uk](http://sustrans.org.uk)  
Sustrans is the UK's leading sustainable transport charity.

#### Bus Times

See timetable displays at bus stops.

[www.traveline.info](http://www.traveline.info)  
0871 200 22 33  
calls cost 15p per minute plus your phone company's access charge

#### NextBuses

Find the bus times for your stop.  
Search for a bus stop by entering a postcode, street & town or a stop name & town.

#### PlusBus

[plusbus.info](http://plusbus.info)  
A discount price 'bus pass' that you buy with your train ticket. It gives you unlimited bus travel around your chosen town, on participating buses.

### National Rail Enquiries

#### Online

[nationalrail.co.uk](http://nationalrail.co.uk)

#### NRE App

Free National Rail Enquiries app for iOS and Android

#### Social Media

[facebook.com/nationalrailenq](https://www.facebook.com/nationalrailenq)  
[@nationalrailenq](https://twitter.com/nationalrailenq)

#### Alert Me

You can sign up to Alert Me messages on the National Rail Enquiries website where you can receive train and platform notifications directly to your smart phone.  
[nationalrail.co.uk/alertme](http://nationalrail.co.uk/alertme)

#### Contact Centre

03457 48 49 50  
Calls cost no more than calls to geographic numbers (01 or 02) and may be recorded.

#### PlusBike

[nationalrail.co.uk/plusbike](http://nationalrail.co.uk/plusbike)  
For more information.

**South Western Railway**



**National Rail**  
Britain's train companies working together



This poster shows details of popular destinations and main, frequent bus routes. Additional services may run, so please check with Traveline or see posters at local bus stops. Whilst considerable care has been taken to ensure the information contained on this poster is correct and accurate, National Rail cannot accept responsibility for any loss or inconvenience caused by any errors or omissions, or for loss, damage, injury or inconvenience relating to the cancellation, alteration, delay or diversion of a service. For any feedback, please e-mail [comments@onwardtravelposters.com](mailto:comments@onwardtravelposters.com)

Scan this code with your mobile for full station information.