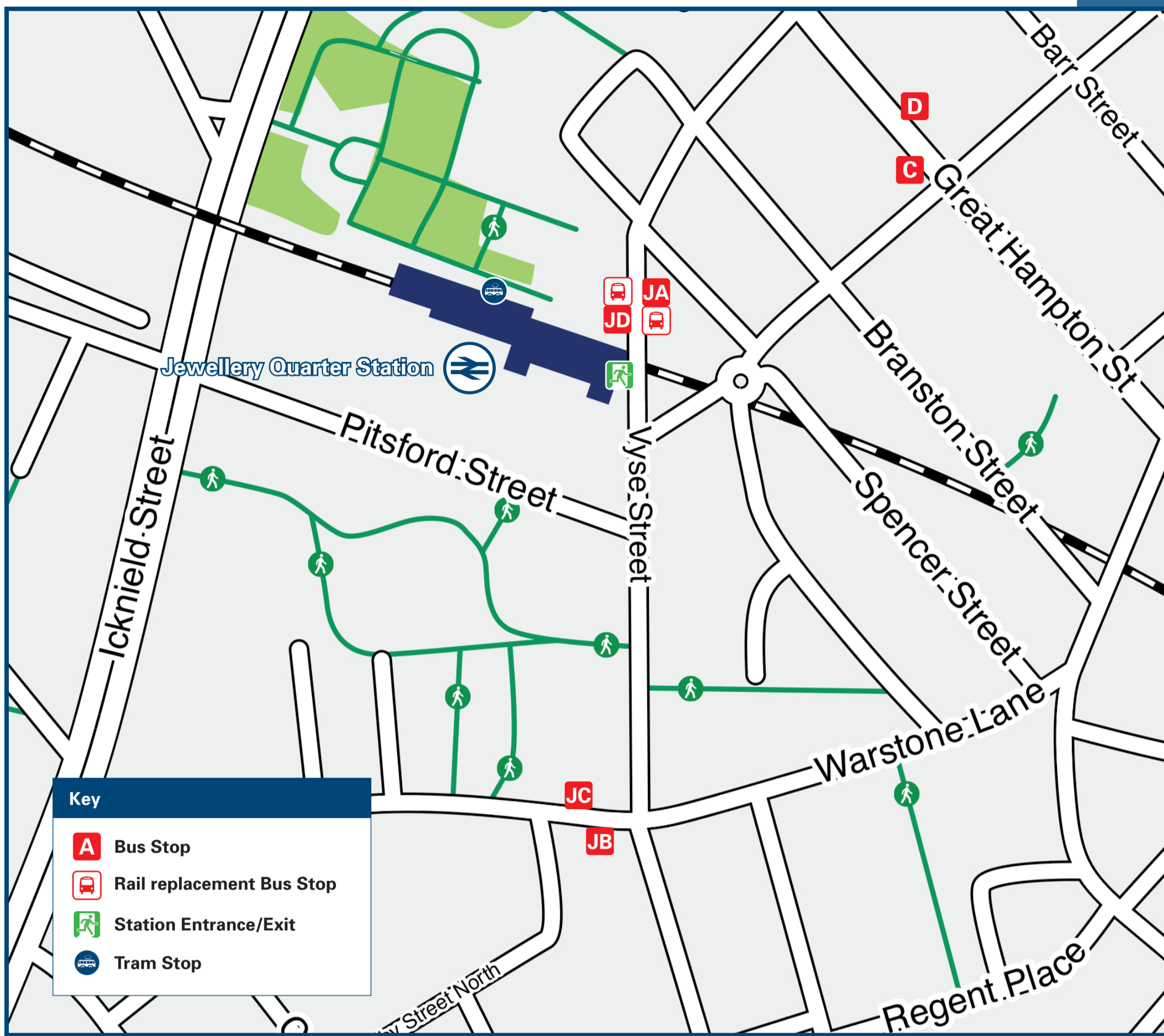




Jewellery Quarter Station

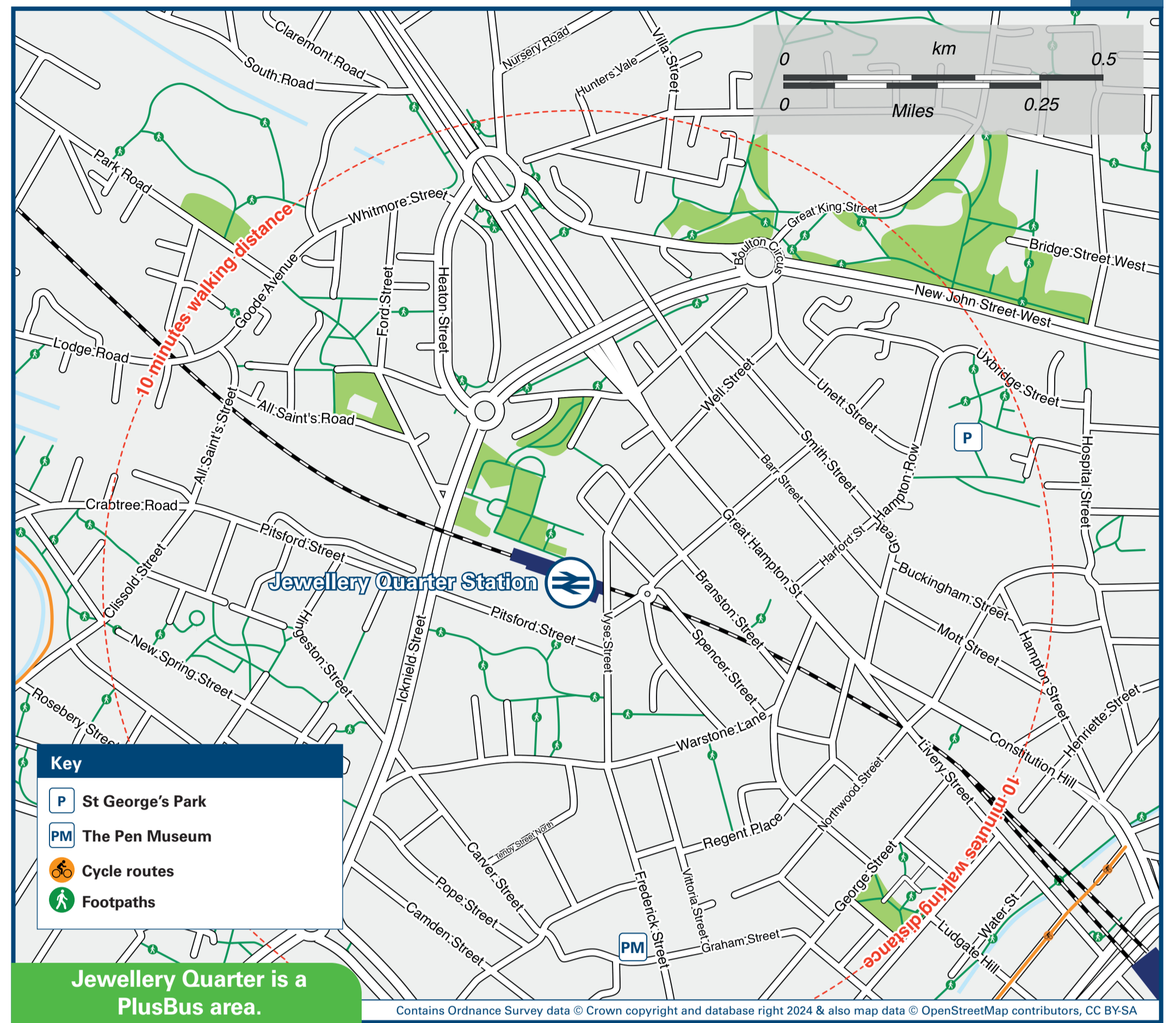
Onward Travel Information

Buses and Cycle Hire



Rail replacement buses/coaches pick-up/set-down at Public Service Bus Stops on Vyse Street (JA & JD) immediately in front of the main entrance to the station building and opposite.

Local area map



PlusBus is a discount price 'bus pass' that you buy with your train ticket. It gives you unlimited bus travel around your chosen town, on participating buses. Visit www.plusbus.info

Main destinations by bus

(Data correct at July 2024)

DESTINATION	BUS ROUTES	BUS STOP
● Adderley Park	8A	JA
● All Saints	101	JB
● Aston	8C	JD
● Bilston	MIDLAND METRO TRAM	PLATFORM 3
	MIDLAND METRO TRAM	PLATFORM 4
● Birmingham	16, 16A, 74	D
	101	JC
● Black Lake	MIDLAND METRO TRAM	PLATFORM 3
● Bordesley Green	8A	JA
● Bradley Lane	MIDLAND METRO TRAM	PLATFORM 3
● Burnt Tree	74	C
● Carters Green	74	C
● Dartmouth Street	MIDLAND METRO TRAM	PLATFORM 3
● Duddeston	8A	JA
● Dudley	74	C
● Dudley Port	74	C
● Dudley Street	MIDLAND METRO TRAM	PLATFORM 3
● Edgbaston Village	MIDLAND METRO TRAM	PLATFORM 4
	MIDLAND METRO TRAM	PLATFORM 4
● Five Ways	8A	JA
● Great Bridge	74	C
● Gorse Farm	16, 16A	C

DESTINATION	BUS ROUTES	BUS STOP
● Guns Village	MIDLAND METRO TRAM	PLATFORM 3
	74	C
● Hamstead	16, 16A	C
● Handsworth	MIDLAND METRO TRAM	PLATFORM 3
	74	C
	101	JB
	16, 16A	C
● Handsworth Wood	101	JB
● Highgate	8A	JA
● Hockley	16, 16A, 74	C
	8C	JD
● Kenrick Park	MIDLAND METRO TRAM	PLATFORM 3
● Ladywood	8A	JA
● Lee Bank	8A	JA
● Leveretts	101	JB
● Loxdale	MIDLAND METRO TRAM	PLATFORM 3
● National Indoor Arena	8A	JA
● Nechells	8C	JD
● Newton	16, 16A	C
● Newtown	8C	JD
● Priestfield	MIDLAND METRO TRAM	PLATFORM 3
	MIDLAND METRO TRAM	PLATFORM 4
● St Pauls	8C	JD
	8A	JA
● Saltley		

DESTINATION	BUS ROUTES	BUS STOP
● Sandwell & District General Hospital	16A	C
● Small Heath	8A	JA
● Soho Benson Road	MIDLAND METRO TRAM	PLATFORM 3
● Sparkbrook	8A	JA
● Swan Village	74	C
● The Hawthorns	MIDLAND METRO TRAM	PLATFORM 3
● Wednesbury	MIDLAND METRO TRAM	PLATFORM 3
● West Bromwich	MIDLAND METRO TRAM	PLATFORM 3
	16A, 74	C
● Winson Green	MIDLAND METRO TRAM	PLATFORM 3
	101	JB
● Wolverhampton	MIDLAND METRO TRAM	PLATFORM 3

Notes

- **PlusBus** destination, please see below for details. Bus routes 8A, 8C, 16, 16A, 74 & 101 run daily, Mondays to Sundays & Bank Holidays.
- 🚆 Direct trains operate to this destination from this Station.
- Bike Hire West Midlands Cycle Hire wmcyclehire.co.uk for more information

Taxis

Jewellery Quarter Station has no taxi rank or cab office. Advance booking is essential, please consider using the following local operators: (Inclusion of this number doesn't represent any endorsement of the taxi firm)

St Pauls Cars
0121 236 1919

Birmingham Taxis
0121 702 2000

VEEZU
0121 744 1111

Further information about all onward travel

Local Cycle Info www.tfwm.org.uk/plan-your-journey/ways-to-travel/cycling-and-walking For more information about cycle routes.	National Cycle Info sustrans.org.uk Sustrans is the UK's leading sustainable transport charity.	Bus Times See timetable displays at bus stops. www.traveline.info 0871 200 22 33 call cost 12p per minute plus your phone company's access charge	NextBuses Find the bus times for your stop. Search for a bus stop by entering a postcode, street & town or a stop name & town.	PlusBus plusbus.info A discount price 'bus pass' that you buy with your train ticket. It gives you unlimited bus travel around your chosen town, on participating buses.
---	---	--	--	---

National Rail Enquiries

Online nationalrail.co.uk	NRE App Free National Rail Enquiries app for iOS and Android	Social Media facebook.com/nationalrailenq @nationalrailenq	Alert Me You can sign up to Alert Me messages on the National Rail Enquiries website where you can receive train and platform notifications directly to your smart phone. nationalrail.co.uk/alertme	Contact Centre 03457 48 49 50 Calls cost no more than calls to geographic numbers (01 or 02) and may be recorded.	PlusBike nationalrail.co.uk/plusbike For more information.
---	--	---	---	--	--



This poster shows details of popular destinations and main, frequent bus routes. Additional services may run, so please check with Traveline or see posters at local bus stops. Whilst considerable care has been taken to ensure the information contained on this poster is correct and accurate, National Rail cannot accept responsibility for any loss or inconvenience caused by any errors or omissions, or for loss, damage, injury or inconvenience relating to the cancellation, alteration, delay or diversion of a service. For any feedback, please e-mail comments@onwardtravelposters.com

Scan this code with your mobile for full station information.