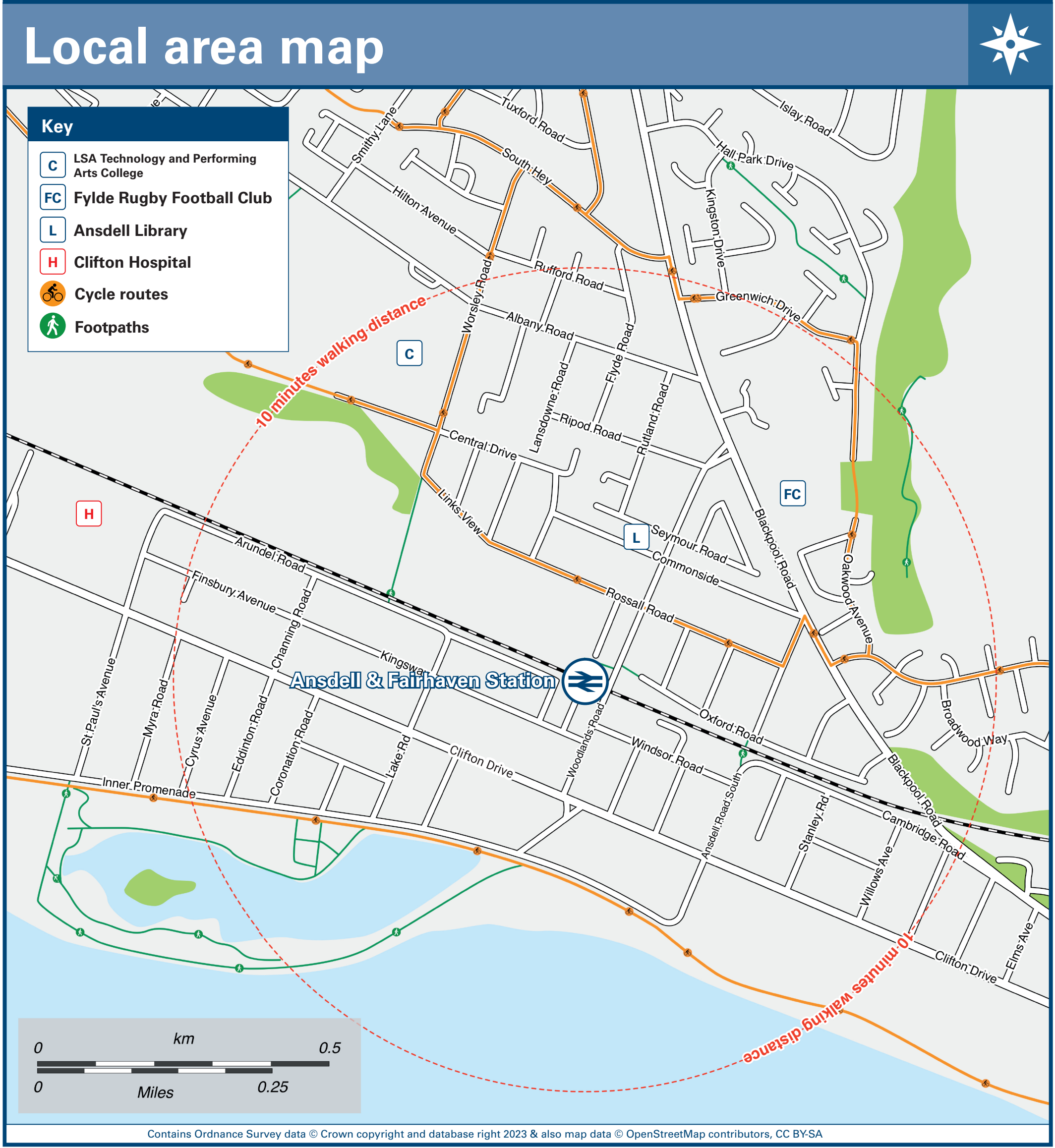




Ansdell & Fairhaven Station

Onward Travel Information



Main destinations by bus			(Data correct at February 2024)		
DESTINATION	BUS ROUTES	BUS STOP	DESTINATION	BUS ROUTES	BUS STOP
Blackpool (Town Centre)	11B	A	Lytham	11B, 76	B
Clifton Hospital#	11B, 76	A		78	C
Elswick	78*	C	Poulton-le-Fylde	76	B
Freckleton	78	C	Royal Lytham & St Anne's Golf Club	Pre-booked taxi (5 to 10 minutes journey time) 11B(alight St Anne's Library) 76(alight St Thomas' Road)	Station entrance A A
Great Eccleston	78*	C	Saltcotes	11B	B
Greenhalgh-with-Thistleton	78*	C	St Anne's	11B, 76	A
Hey Houses	78	D		78	D
Kirkham	76	B			
	78	C			

Notes

Bus routes 11B and 78 operate daily, including Sundays.
Bus route 76 operates Mondays to Saturdays only. No Sunday service.
For bus times please see bus stop timetables or contact Traveline on 0871 200 22 33.

Direct trains operate to this destination from this station.

It's approximately 15 minutes walk from this station to Clifton Hospital, see Local area map for directions.

* To this destination bus route 78 operates Mondays to Saturdays only.

Taxis	Ansdell & Fairhaven station has no taxi rank or cab office. Advance booking is essential, please consider using the following local operators: (Inclusion of this number doesn't represent any endorsement of the taxi firm)	Whiteside Taxis 0800 711 611	Style Chauffeur Services 01253 729 082	Premier Fylde Taxis 01253 711 111
--------------	--	--	--	---

Further information about all onward travel					
Local Cycle Info fylde.gov.uk For more information about cycle routes.	National Cycle Info sustrans.org.uk Sustrans is the UK's leading sustainable transport charity.	Bus Times See timetable displays at bus stops. www.traveline.info 0871 200 22 33 calls cost 15p per minute plus your phone company's access charge	NextBuses Find the bus times for your stop. Search for a bus stop by entering a postcode, street & town or a stop name & town.	PlusBus plusbus.info A discount price 'bus pass' that you buy with your train ticket. It gives you unlimited bus travel around your chosen town, on participating buses.	
National Rail Enquiries					
Online nationalrail.co.uk	NRE App Free National Rail Enquiries app for iOS and Android	Social Media facebook.com/nationalrailenq @nationalrailenq	Alert Me You can sign up to Alert Me messages on the National Rail Enquiries website where you can receive train and platform notifications directly to your smart phone. nationalrail.co.uk/alertme	Contact Centre 03457 48 49 50 Calls cost no more than calls to geographic numbers (01 or 02) and may be recorded.	PlusBike nationalrail.co.uk/plusbike For more information.



This poster shows details of popular destinations and main, frequent bus routes. Additional services may run, so please check with Traveline or see posters at local bus stops. Whilst considerable care has been taken to ensure the information contained on this poster is correct and accurate, National Rail cannot accept responsibility for any loss or inconvenience caused by any errors or omissions, or for loss, damage, injury or inconvenience relating to the cancellation, alteration, delay or diversion of a service. For any feedback, please e-mail comments@onwardtravelposters.com

Scan this code with your mobile for full station information.