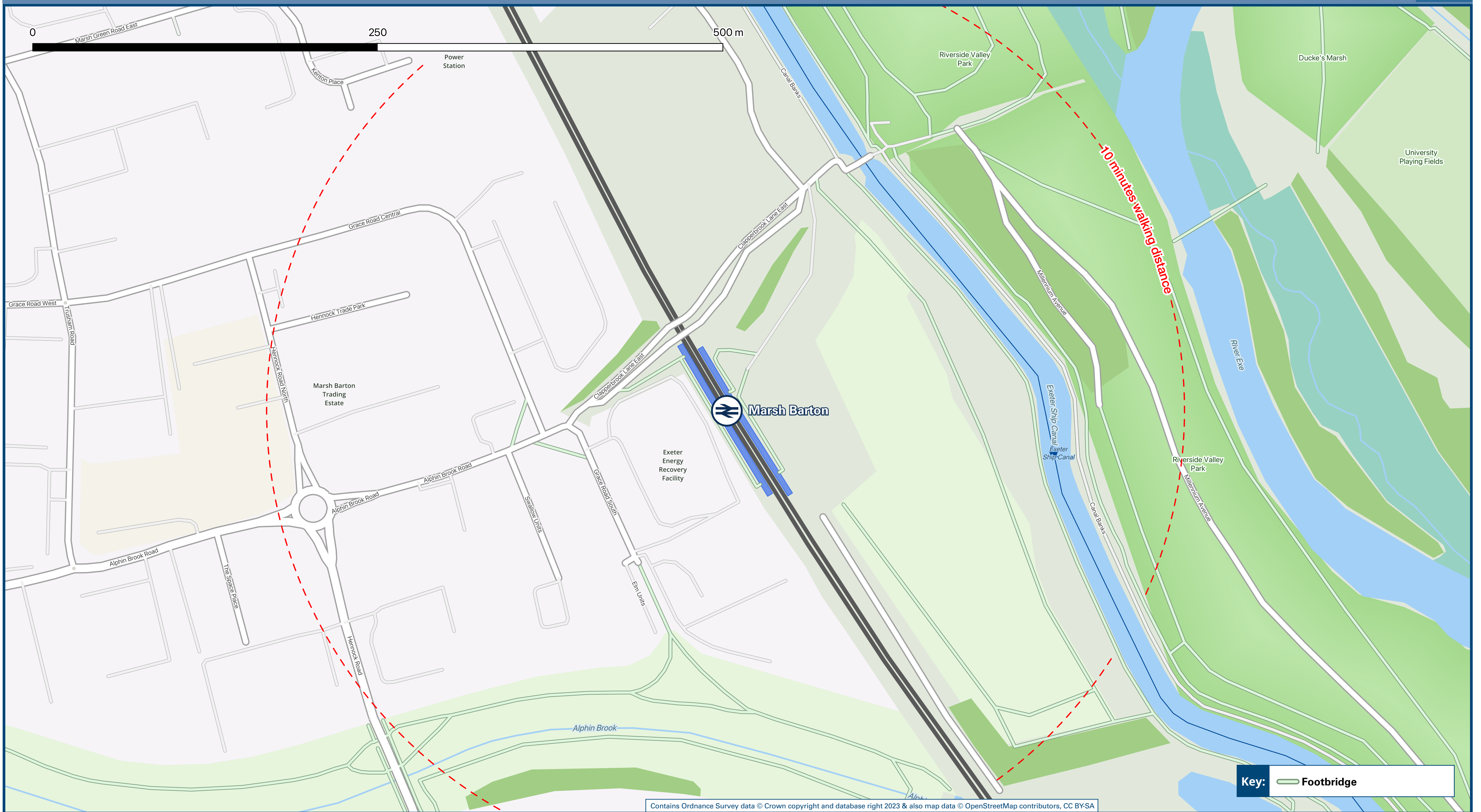




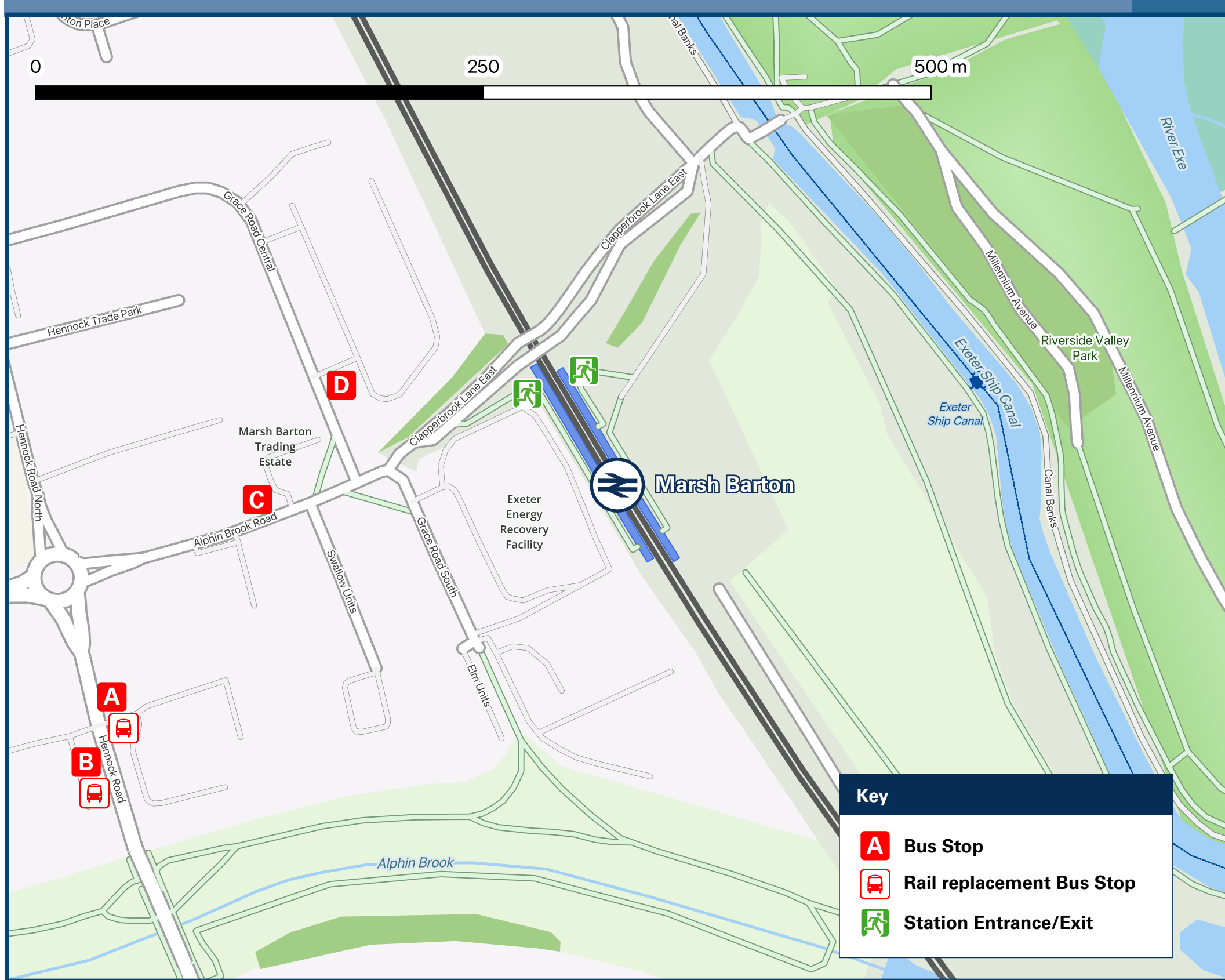
# Marsh Barton Station

# Onward Travel Information

## Local area map



## Buses



Rail replacement buses/coaches will depart from bus stops {A} and {B} on Hennock Road.

## Main destinations by bus

(Data correct at November 2023)

DESTINATION	BUS ROUTES	BUS STOP
Exeter City Centre	B	B
	GRN	C
Exminster	B	A
	B	A
Haven Banks	GRN	C
Heavitree	GRN	C
Marsh Barton (Park & Ride)	10 - 15 minutes walk (see Local map)	
Marsh Barton (Matford Park & Ride)	GRN	D
	B	A
Sowton (Park & Ride)	GRN	C

**Notes**

- Bus route B operates a daily service.
- Bus route GRN (Green) operates on Mondays to Saturdays, only. No Sunday service.
- Direct trains operate from this station to this destination.

## Taxis

Marsh Barton station has no taxi rank or cab office. Advance booking is essential, please consider using the following local operators: (Inclusion of this number doesn't represent any endorsement of the taxi firm)

**Need-A-Cab**  
01392 555 555

**All Exeter Cars & Taxis**  
01392 690 331

**Apple Taxis**  
01392 666 666

## Further information about all onward travel

<b>Local Cycle Info</b> <a href="http://exeter.gov.uk">exeter.gov.uk</a> For more information about cycle routes.	<b>National Cycle Info</b> <a href="http://sustrans.org.uk">sustrans.org.uk</a> Sustrans is the UK's leading sustainable transport charity.	<b>Bus Times</b> See timetable displays at bus stops.  <a href="http://www.traveline.info">www.traveline.info</a> 0871 200 22 33 calls cost 10p per minute plus your phone company's access charge	<b>NextBuses .mobi</b>   <b>Find the bus times for your stop.</b> Search for a bus stop by entering a postcode, street & town or a stop name & town.	<b>PlusBus</b>  <b>plusbus.info</b> A discount price "bus pass" that you buy with your train ticket. It gives you unlimited bus travel around your chosen town, on participating buses.
---	---	---	--	--

## National Rail Enquiries

<b>Online</b> <a href="http://nationalrail.co.uk">nationalrail.co.uk</a>	<b>NRE App</b> Free National Rail Enquiries app for iOS and Android	<b>Social Media</b> <a href="https://facebook.com/nationalrailenq">facebook.com/nationalrailenq</a> @nationalrailenq	<b>Alert Me</b> You can sign up to Alert Me messages on the National Rail Enquiries website where you can receive train and platform notifications directly to your smart phone. <a href="http://nationalrail.co.uk/alertme">nationalrail.co.uk/alertme</a>	<b>Contact Centre</b> 03457 48 49 50 Calls cost no more than calls to geographic numbers (01 or 02) and may be recorded.	<b>PlusBike</b>  <a href="http://nationalrail.co.uk/plusbike">nationalrail.co.uk/plusbike</a> For more information.
---	--	--	---	--	--



This poster shows details of popular destinations and main, frequent bus routes. Additional services may run, so please check with Traveline or see posters at local bus stops. Whilst considerable care has been taken to ensure the information contained on this poster is correct and accurate, National Rail cannot accept responsibility for any loss or inconvenience caused by any errors or omissions, or for loss, damage, injury or inconvenience relating to the cancellation, alteration, delay or diversion of a service. For any feedback, please e-mail [comments@onwardtravelposters.com](mailto:comments@onwardtravelposters.com)

Scan this code with your mobile for full station information.