



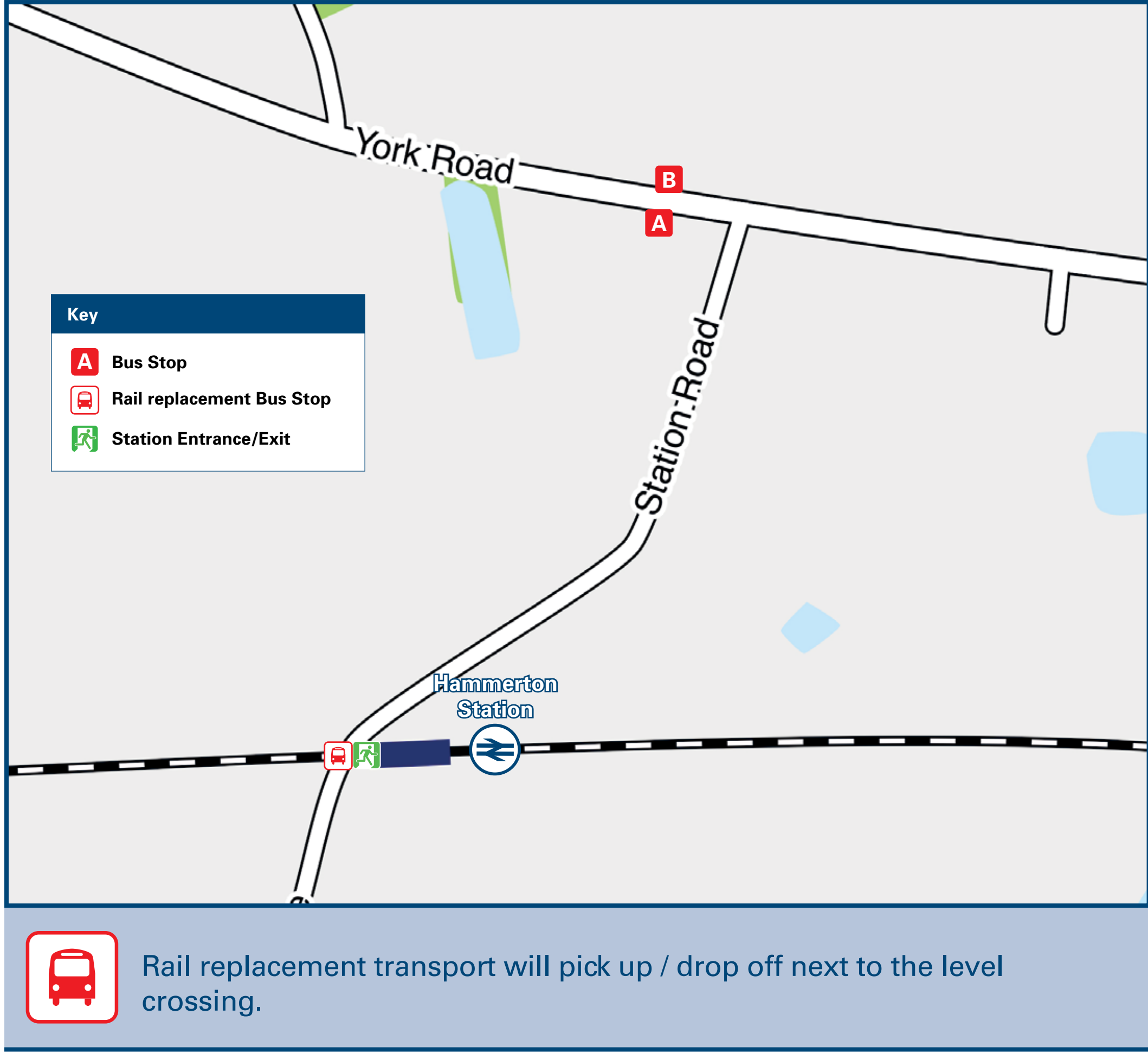
# Hammerton Station

## Onward Travel Information

### Local area map



### Buses



### Main destinations by bus

DESTINATION	BUS ROUTES	BUS STOP
Aldborough	82	A
Boroughbridge	82, 83**	A
Great Ouseburn	82	A
Green Hammerton	82, 83**	A
Hessay	82*, 83**	B
Holgate	82, 83**	B
Little Ouseburn	82	A
Marton-cum-Grafton	82	A
Ripon	82, 83**	A
Skelton-on-Ure	82	A
Upper Poppleton	82, 83**	B
Whixley	82	A
York	82, 83**	B

**Notes**

Bus routes 82 and 83 operate Mondays to Saturdays only. No Sunday service.

Additional DalesBus services may operate into the Yorkshire Dales National Park on Sundays & Bank Holidays during the summer months.

Visit [www.dalesbus.org](http://www.dalesbus.org) for full details of local bus services.

### Taxis

Hammerton Station has no taxi rank or cab office. Advance booking is essential, please consider using the following local operators: (Inclusion of this number doesn't represent any endorsement of the taxi firm)

**AJ's Taxi Service**  
07599 265 097

**Driven Two Private Hire**  
07970 966 449

**Station Taxis (York)**  
01904 646 424

### Further information about all onward travel

<b>Local Cycle Info</b> <a href="http://www.northyorks.gov.uk/roads-parking-and-travel/roads-and-pavements/cycle-lanes-and-routes">www.northyorks.gov.uk/roads-parking-and-travel/roads-and-pavements/cycle-lanes-and-routes</a> For more information about cycle routes.	<b>National Cycle Info</b> <a href="http://sustrans.org.uk">sustrans.org.uk</a> Sustrans is the UK's leading sustainable transport charity.	<b>Bus Times</b> See timetable displays at bus stops. <a href="http://www.traveline.info">www.traveline.info</a> 0871 200 22 33 calls cost 15p per minute plus your phone company's access charge	<b>NextBuses</b> Find the bus times for your stop. Search for a bus stop by entering a postcode, street & town or a stop name & town.	<b>PlusBus</b> <a href="http://plusbus.info">plusbus.info</a> A discount price 'bus pass' that you buy with your train ticket. It gives you unlimited bus travel around your chosen town, on participating buses.
---	---	---	---	---

### National Rail Enquiries

<b>Online</b> <a href="http://nationalrail.co.uk">nationalrail.co.uk</a>	<b>NRE App</b> Free National Rail Enquiries app for iOS and Android	<b>Social Media</b> <a href="https://facebook.com/nationalrailenq">facebook.com/nationalrailenq</a> <a href="https://twitter.com/nationalrailenq">@nationalrailenq</a>	<b>Alert Me</b> You can sign up to Alert Me messages on the National Rail Enquiries website where you can receive train and platform notifications directly to your smart phone. <a href="http://nationalrail.co.uk/alertme">nationalrail.co.uk/alertme</a>	<b>Contact Centre</b> 03457 48 49 50 Calls cost no more than calls to geographic numbers (01 or 02) and may be recorded.	<b>PlusBike</b> <a href="http://nationalrail.co.uk/plusbike">nationalrail.co.uk/plusbike</a> For more information.
---	--	--	---	--	--



This poster shows details of popular destinations and main, frequent bus routes. Additional services may run, so please check with Traveline or see posters at local bus stops. Whilst considerable care has been taken to ensure the information contained on this poster is correct and accurate, National Rail cannot accept responsibility for any loss or inconvenience caused by any errors or omissions, or for loss, damage, injury or inconvenience relating to the cancellation, alteration, delay or diversion of a service. For any feedback, please e-mail [comments@onwardtravelposters.com](mailto:comments@onwardtravelposters.com)

Scan this code with your mobile for full station information.