



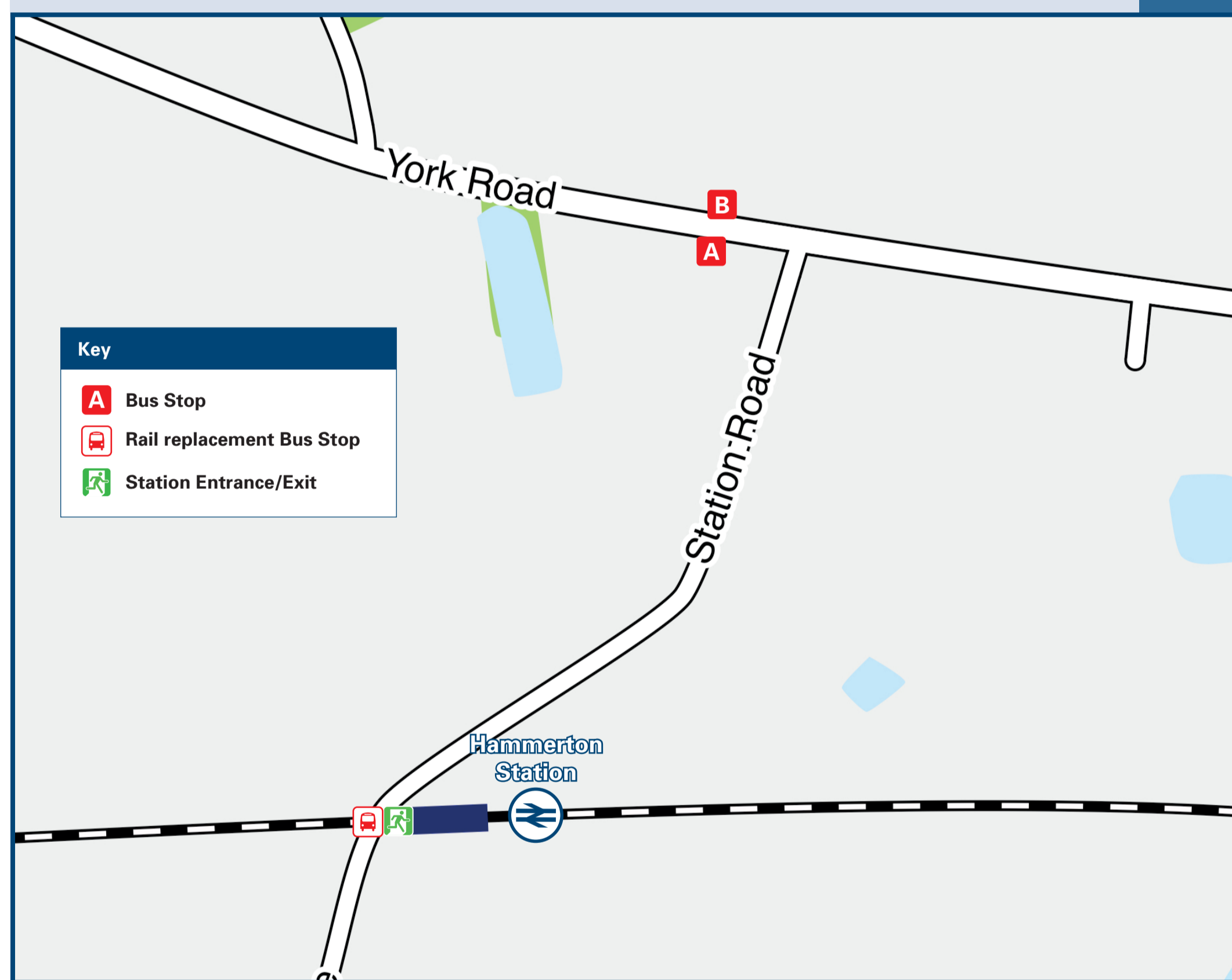
Hammerton Station

Onward Travel Information

Local area map



Buses



Rail replacement transport will pick up / drop off at the entrance to the station car park.

Main destinations by bus

(Data correct at February 2026)

DESTINATION	BUS ROUTES	BUS STOP
Aldborough	82#	A
Boroughbridge	82#, 84#	A
Great Ouseburn	82#	A
Green Hammerton	82#, 84#	A
Holgate	82#, 84#	B
Little Ouseburn	82#, 84#	A
Marton-cum-Grafton	82#	A
Ripon	82#, 84#	A
Skelton-on-Ure	82#, 84#	A
Upper Poppleton	82#, 84#	B
Whixley	82#	A
York	82#, 84#	B

Notes

For bus times and days of operation please contact Traveline on www.traveline.info or call: 0871 200 22 33

Additional DalesBus services may operate into the Yorkshire Dales National Park on Sundays & Bank Holidays during the summer months.

Visit www.dalesbus.org for full details of local bus services.

Direct trains operate to this destination from this station.

Bus routes 82 and 84 operate daytime services on Mondays to Saturdays, only. No evenings or Sundays service.

Taxis

Hammerton Station has no taxi rank or cab office. Advance booking is essential, please consider using the following local operators: (Inclusion of this number doesn't represent any endorsement of the taxi firm)

NWP Private Hire Taxi
07795 387 441

Fleetways Taxis (York)
01904 365 365

Getaway Cars (York)
01904 707 070

Further information about all onward travel

Local Cycle Info

www.northyorks.gov.uk/roads-parking-and-travel/roads-and-pavements/cycle-lanes-and-routes
For more information about cycle routes.

National Cycle Info

walkwheelcycletrust.org.uk

Bus Times

See timetable displays at bus stops.

www.traveline.info
0871 200 22 33
call cost 13p per minute
plus your phone company's access charge

PlusBus

plusbus.info

PlusBus is a discount price 'bus pass' that you buy with your train ticket. It gives you unlimited bus travel around your chosen town, on participating buses. Visit www.plusbus.info



National Rail Enquiries

Online
nationalrail.co.uk

NRE App
Free National Rail Enquiries app for iOS and Android

Social Media
facebook.com/nationalrailenq
@nationalrailenq

Alert Me
You can sign up to Alert Me messages on the National Rail Enquiries website where you can receive train and platform notifications directly to your smart phone.
nationalrail.co.uk/alertme

Contact Centre
03457 48 49 50
Calls cost no more than calls to geographic numbers (01 or 02) and may be recorded.

PlusBike
nationalrail.co.uk/plusbike
For more information.



This poster shows details of popular destinations and main, frequent bus routes. Additional services may run, so please check with Traveline or see posters at local bus stops. Whilst considerable care has been taken to ensure the information contained on this poster is correct and accurate, National Rail cannot accept responsibility for any loss or inconvenience caused by any errors or omissions, or for loss, damage, injury or inconvenience relating to the cancellation, alteration, delay or diversion of a service. For any feedback, please e-mail comments@onwardtravelposters.com

Scan this code with your mobile for full station information.