



# Luton Airport Parkway Station

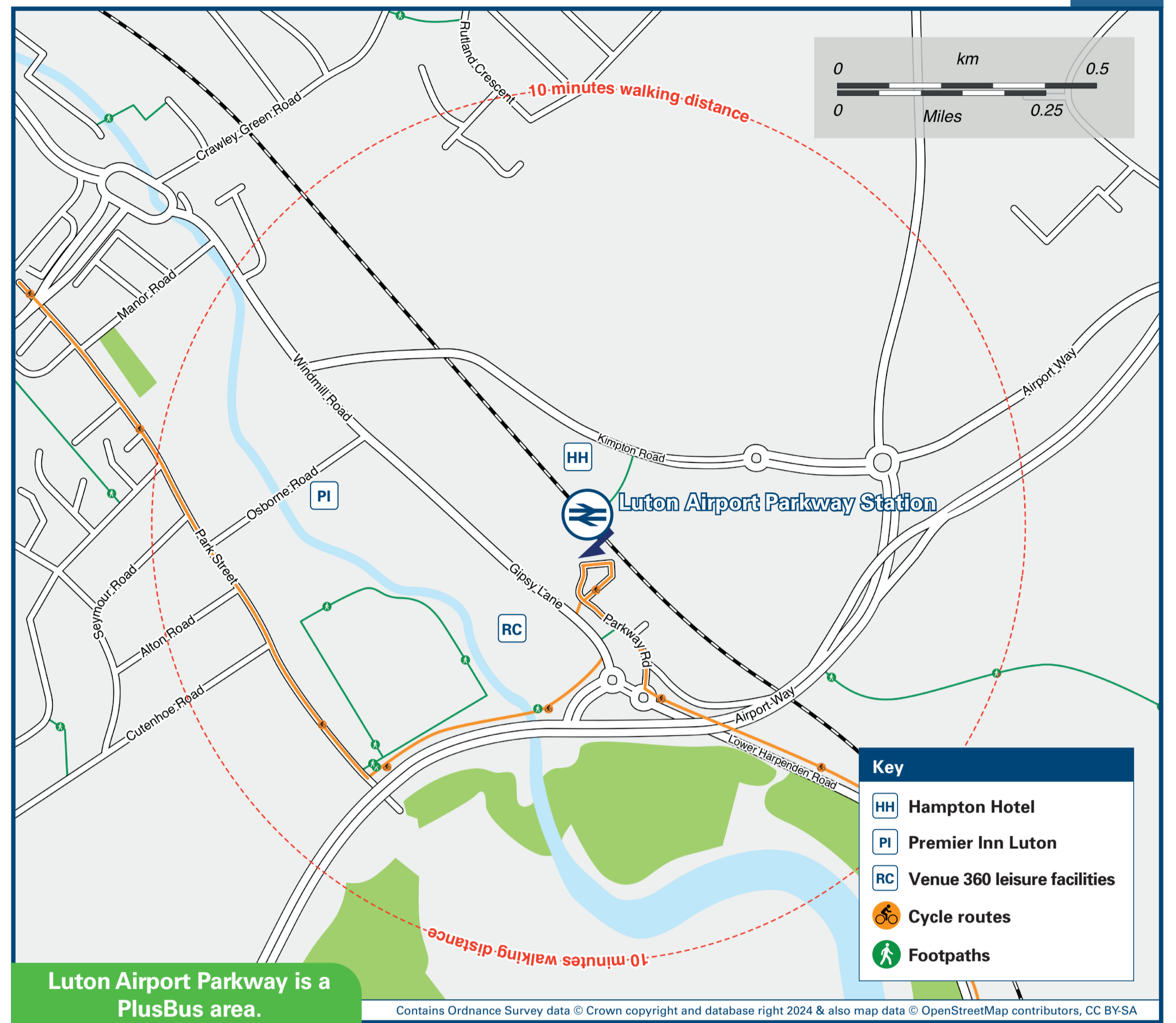
# Onward Travel Information

## Buses and Taxis



Rail Replacement buses depart from outside of the station entrance.

## Local area map



**PlusBus** is a discount price 'bus pass' that you buy with your train ticket. It gives you unlimited bus travel around your chosen town, on participating buses. Visit [www.plusbus.info](http://www.plusbus.info)

## Main destinations by bus

(Data correct at July 2024)

DESTINATION	BUS ROUTES	BUS STOP
● Butterfield Business Park	100	B
Caddington	230	A
Capability Green	30~	A
Chaul End	A, F70, F77	B
● Dunstable	A, F70, F77	B
Hatfield (The Forum)	X10**	E
Hatfield (University of Hertfordshire de Havilland Campus)	X10**	E
Hitchin	100	B
Leighton Buzzard	F70, F77	B

DESTINATION	BUS ROUTES	BUS STOP
● Lewsey (Tesco)	230	A
Lister Hospital (Stevenage)	100	B
● Luton Airport	DART A, 757#, F70, F77	C
● Luton Station Interchange	230 A, 100, 757#, F70, F77	A B
● Luton Town FC	A, F70, F77 (alight bus at Clifton Road)	B
Skimpot	A	B
Slip End	230	A

DESTINATION	BUS ROUTES	BUS STOP
Stanbridge	F70	B
Stevenage	100	B
● Stopsley	100	B
Tilsworth	F70	B

### Notes

- **PlusBus** destination, please see below for details. Bus routes 100, 230 & F70 operate on Mondays to Saturdays, only. No Sunday services. Bus routes A, 100, 757, F77 and DART operate a daily service.
- ⚡ Direct trains operate to this destination from this station. DART Direct passenger transit service operates to this destination from this station.
- \* Additional bus services operate from Luton Station Interchange or Luton Town Centre (various bus stops) to all parts of Luton, Dunstable and beyond.
- # Plusbus tickets are NOT valid on bus routes 757 or DART on this poster.
- ~ Bus route 30 operates a limited peak-time Mondays to Fridays service, only.
- \*\* Bus route X10 operates a University term-time Mondays to Fridays service, only.

## Taxis

Luton Airport Parkway station is served by a taxi rank or a cab office. Check availability before travelling, and pre-book if necessary. Please consider the following local operators: (Inclusion of this number doesn't represent any endorsement of the taxi firm)

**Next Cabs**  
01582 429 429

## Further information about all onward travel

<b>Local Cycle Info</b> <a href="http://luton.gov.uk">luton.gov.uk</a> For more information about cycle routes.	<b>National Cycle Info</b> <a href="http://sustrans.org.uk">sustrans.org.uk</a> Sustrans is the UK's leading sustainable transport charity.	<b>Bus Times</b> See timetable displays at bus stops. <a href="http://www.traveline.info">www.traveline.info</a> 0871 200 22 33 call cost 12p per minute plus your phone company's access charge	<b>NextBuses</b> <b>Find the bus times for your stop.</b> Search for a bus stop by entering a postcode, street & town or a stop name & town.	<b>PlusBus</b> <b>plusbus.info</b> A discount price 'bus pass' that you buy with your train ticket. It gives you unlimited bus travel around your chosen town, on participating buses.
---	---	--	--	--

## National Rail Enquiries

<b>Online</b> <a href="http://nationalrail.co.uk">nationalrail.co.uk</a>	<b>NRE App</b> Free National Rail Enquiries app for iOS and Android	<b>Social Media</b> facebook.com/nationalrailenq @nationalrailenq	<b>Alert Me</b> You can sign up to Alert Me messages on the National Rail Enquiries website where you can receive train and platform notifications directly to your smart phone. <a href="http://nationalrail.co.uk/alertme">nationalrail.co.uk/alertme</a>	<b>Contact Centre</b> 03457 48 49 50 Calls cost no more than calls to geographic numbers (01 or 02) and may be recorded.	<b>PlusBike</b> <a href="http://nationalrail.co.uk/plusbike">nationalrail.co.uk/plusbike</a> For more information.
---	--	---	---	--	--



**National Rail**  
Britain's train companies working together

