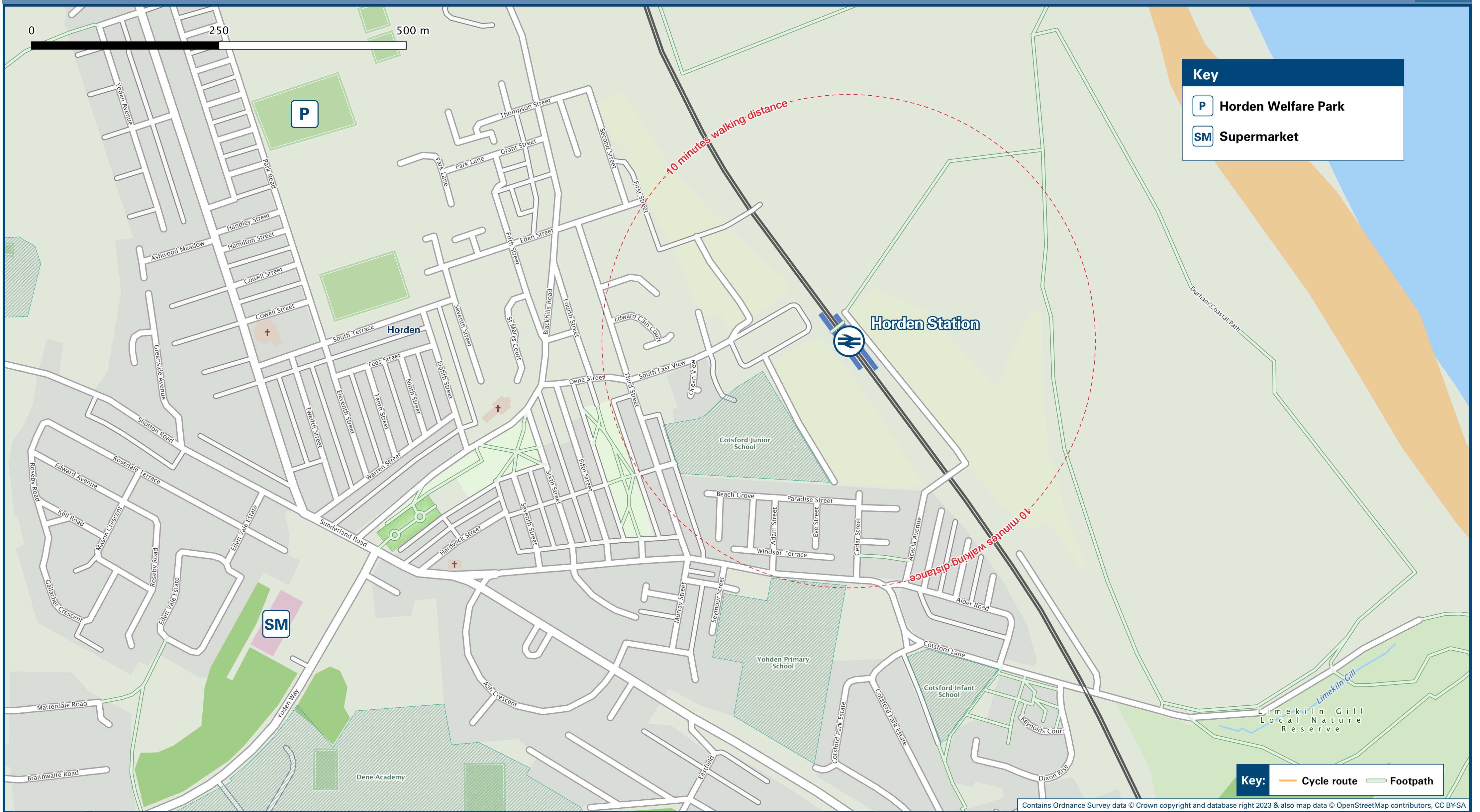




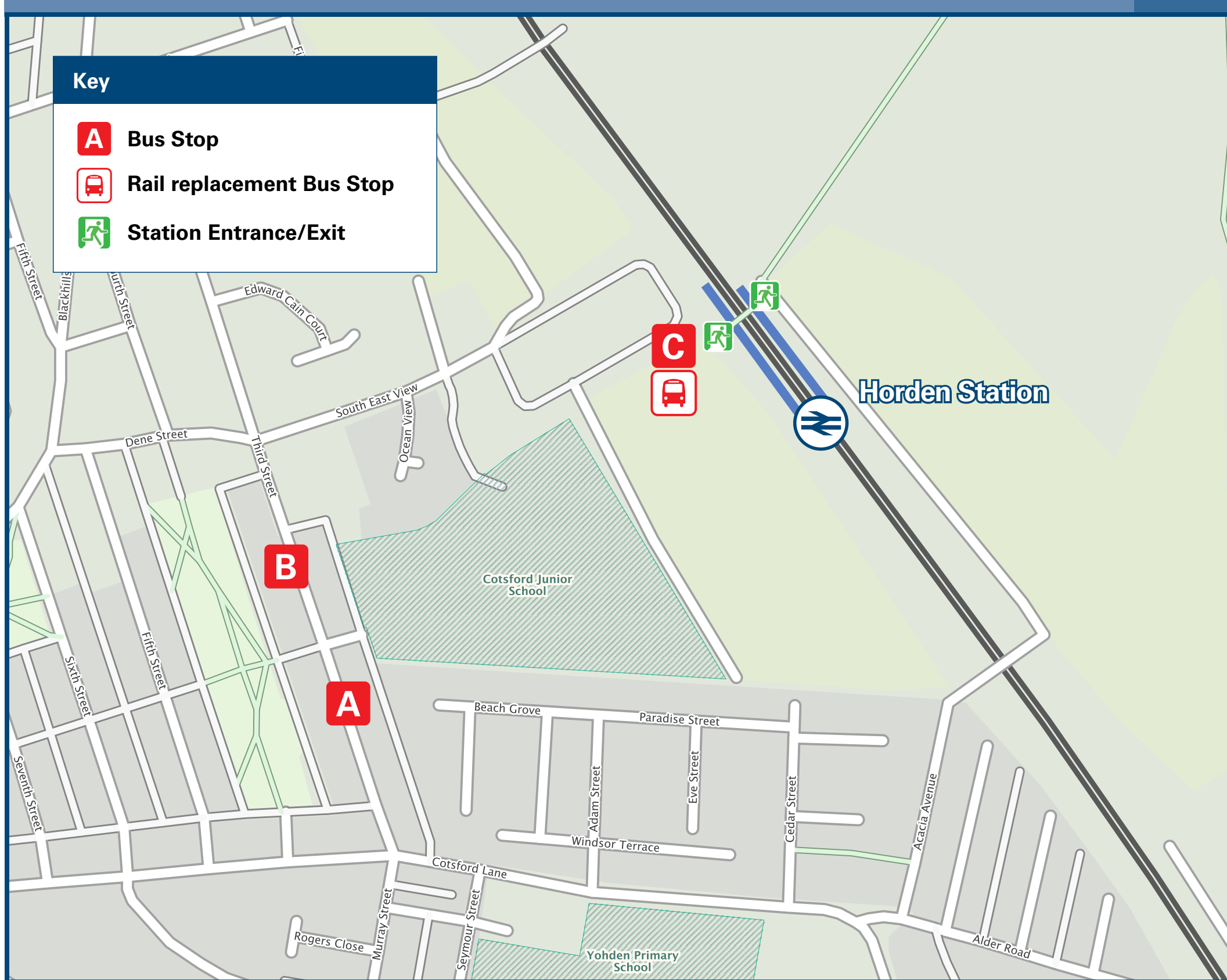
Horden Station

Onward Travel Information

Local area map



Buses



Rail replacement pick up/drop off in the Station car park at bus stop **C**.

Main destinations by bus

(Data correct at December 2023)

DESTINATION	BUS ROUTES	BUS STOP
Horden (Alder Road)	209	A, C
	209, 210	C
Peterlee (Bus Station)*	209	A
	210	B
Peterlee (Thorntree Gill)	209	A, C
	209, 210	C
Peterlee (Town Centre)	209	A
	210	B
Peterlee (Westmoreland Rise)	210	B, C

Notes

Bus routes 209 and 210 operate an hourly daytime service on Mondays to Saturdays only.
For bus times please see bus stop timetables or contact Traveline
* Change at Peterlee Bus Station for more connecting bus services around Durham County and beyond.

Taxis

Horden Station has no taxi rank or cab office. Advance booking is essential, please consider using the following local operators: (Inclusion of this number doesn't represent any endorsement of the taxi firm)

Blueline Taxis
0191 586 5737

Chevron Taxis
0191 586 0555

247 Taxi Services
0191 586 7777

Further information about all onward travel

Local Cycle Info urham.gov.uk/cycling <small>For more information about cycle routes.</small>	National Cycle Info sustrans.org.uk <small>Sustrans is the UK's leading sustainable transport charity.</small>	Bus Times <small>See timetable displays at bus stops.</small> www.traveline.info 0871 200 22 33 <small>calls cost 13p per minute plus your phone company's access charge</small>	NextBuses <small>Find the bus times for your stop.</small> <small>Search for a bus stop by entering a postcode, street & town or a stop name & town.</small>	PlusBus <small>plusbus.info</small> <small>A discount price 'bus pass' that you buy with your train ticket. It gives you unlimited bus travel around your chosen town, on participating buses.</small>
--	--	--	---	---

National Rail Enquiries

Online nationalrail.co.uk	NRE App Free National Rail Enquiries app for iOS and Android	Social Media facebook.com/nationalrailenq @nationalrailenq	Alert Me <small>You can sign up to Alert Me messages on the National Rail Enquiries website where you can receive train and platform notifications directly to your smart phone.</small> nationalrail.co.uk/alertme	Contact Centre 03457 48 49 50 <small>Calls cost no more than calls to geographic numbers (01 or 02) and may be recorded.</small>	PlusBike nationalrail.co.uk/plusbike For more information.
---	---	--	--	---	---

