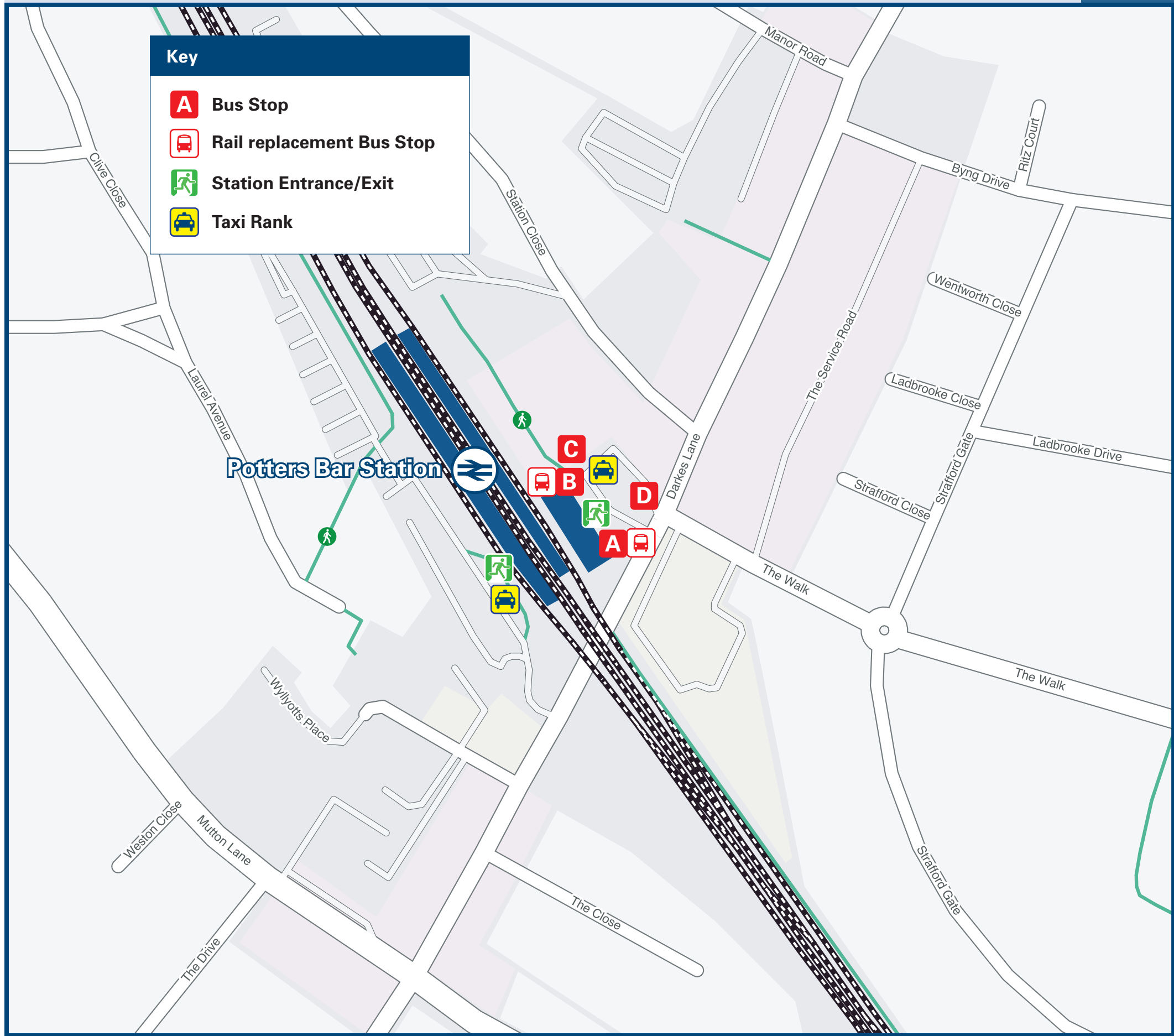




Potters Bar Station

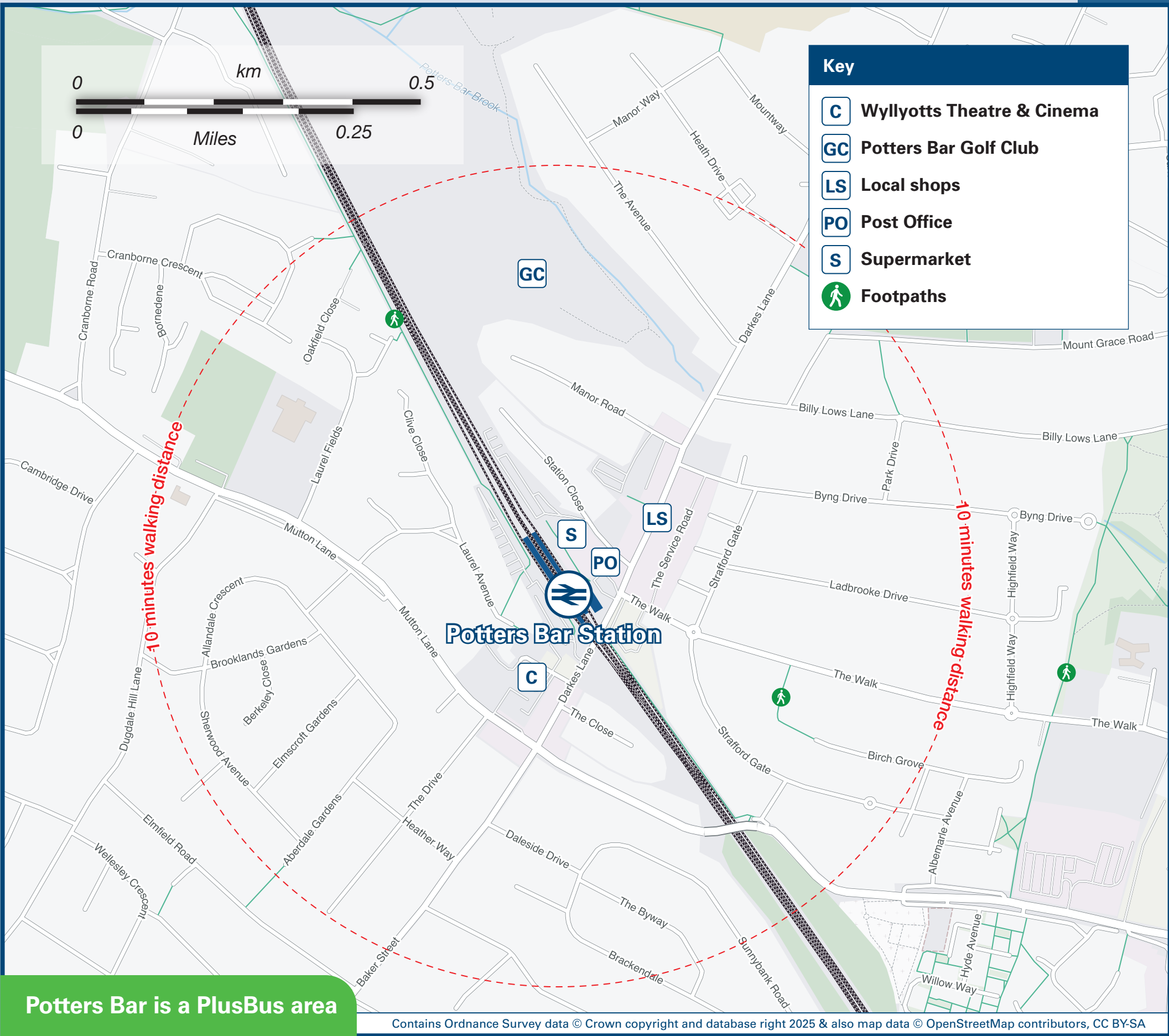
Onward Travel Information

Buses and Taxis



Rail replacement buses towards Alexandra Palace, Finsbury Park and Central London from stop {A}, also towards Hatfield and Welwyn Garden City from stop {B} outside the station entrance, on Drakes Lane.

Local area map



Potters Bar is a PlusBus area



PlusBus

PlusBus is a discount price 'bus pass' that you buy with your train ticket. It gives you unlimited bus travel around your chosen town, on participating buses. Visit www.plusbus.info

Main destinations by bus

(Data correct at May 2025)



| DESTINATION | BUS ROUTES | BUS STOP |
|-----------------------------|------------|----------|
| Amos Grove | 298 | C |
| Barnet (High Street Church) | 84B | A |
| Borehamwood | 398~ | B |
| Botany Bay | 313 | D |
| Brookmans Park | 610 | B |
| | 242* | C |
| Chase Farm Hospital | 313 | D |
| Cheshunt | 242 | A |
| Chingford | 313 | D |
| Chipping Barnet | 84B | A |
| Cockfosters Station | 298 | C |
| | 610 | D |
| Cuffley Station | 242 | A |
| Enfield Chase Station | 313 | D |
| Enfield Town | 313 | D |
| Flamstead End | 242 | A |
| Ganwick Corner | 84B | A |
| Goff's Oak | 242 | A |
| Hadley Wood | 298 | C |

| DESTINATION | BUS ROUTES | BUS STOP |
|---|------------|----------|
| Hatfield Business Park | 610 | B |
| Hatfield (The Galleria Outlet Shopping) | 610 | B |
| Hatfield (Town Centre) | 610 | B |
| Hatfield (University of Hertfordshire) # | 610 | B |
| High Barnet | 84B | A |
| | 84B | A |
| Little Heath | 242*, 610 | B |
| London Colney | 84 | B |
| Monken Hadley | 84B | A |
| Northaw | 242 | A |
| Oakwood | 298 | C |
| Oxlease | 610 | B |
| Ponders End | 313 | D |
| Potters Bar Town Service ## | PB1 | A |
| Southgate Station | 298 | C |
| South Hatfield | 610 | B |
| South Mimms | 84, 398~ | B |
| St Albans City Centre (St Peter's Street) | 84 | B |

| DESTINATION | BUS ROUTES | BUS STOP |
|--|------------|----------|
| Swanley Bar | 610 | B |
| | 242* | C |
| University of Hertfordshire (Hatfield) # | 610 | B |
| Waltham Cross | 242 | A |
| | 610 | B |
| Welham Green | 242* | C |

Notes

- **PlusBus** destination, please see below for details
- Bus routes 84, 242, 298 and 313 run daily services.
- Bus routes 84B, 610 and PB1 run Mondays to Saturdays services, only. No Sunday services.
- For bus times and days of operation please contact Traveline on www.traveline.info or call: 0871 200 22 33
- ➡ Direct trains operate to this destination from this station.
- ⚙ Change here for connecting National Rail services.
- 🚇 Change here for London Underground Piccadilly Line trains towards Central London.
- 🚆 Change here for London Overground trains towards Central London.
- * To this destination bus route 242 operates a limited service on Sundays & Bank Holidays, only.
- # Bus route 610 serves The Forum and De Havilland campuses.
- ## Potters Bar Town Service PB1 serves Oakmere Lane, Chase Avenue, Carpenter Way, Oakmere Avenue and Shillitoe Avenue.
- ~ Bus route 398 runs a Mondays to Fridays service. No Saturday or Sunday service.

Taxis

Potters Bar station is served by a taxi rank or a cab office. Check availability before travelling, and pre-book if necessary. Please consider the following local operators: (Inclusion of this number doesn't represent any endorsement of the taxi firm)

Manor Cars
01707 655 655

Metro Radio Cars
020 8440 1234

Village Cars Barnet
020 8883 0000

Further information about all onward travel

| Local Cycle Info | National Cycle Info | Bus Times | NextBuses | PlusBus |
|--|---|--|---|---|
| hertsmere.gov.uk For more information about cycle routes. | sustrans.org.uk Sustrans is the UK's leading sustainable transport charity. | See timetable displays at bus stops. www.traveline.info 0871 200 22 33 call cost 15p per minute plus your phone company's access charge | Find the bus times for your stop. Search for a bus stop by entering a postcode, street & town or a stop name & town. | plusbus.info A discount price 'bus pass' that you buy with your train ticket. It gives you unlimited bus travel around your chosen town, on participating buses. |

National Rail Enquiries

| Online | NRE App | Social Media | Alert Me | Contact Centre | PlusBike |
|--|--|---|--|--|---|
| nationalrail.co.uk | Free National Rail Enquiries app for iOS and Android | facebook.com/nationalrailenq @nationalrailenq | You can sign up to Alert Me messages on the National Rail Enquiries website where you can receive train and platform notifications directly to your smart phone. nationalrail.co.uk/alertme | 03457 48 49 50 Calls cost no more than calls to geographic numbers (01 or 02) and may be recorded. | nationalrail.co.uk/plusbike For more information. |

Great Northern



National Rail
Britain's train companies working together

