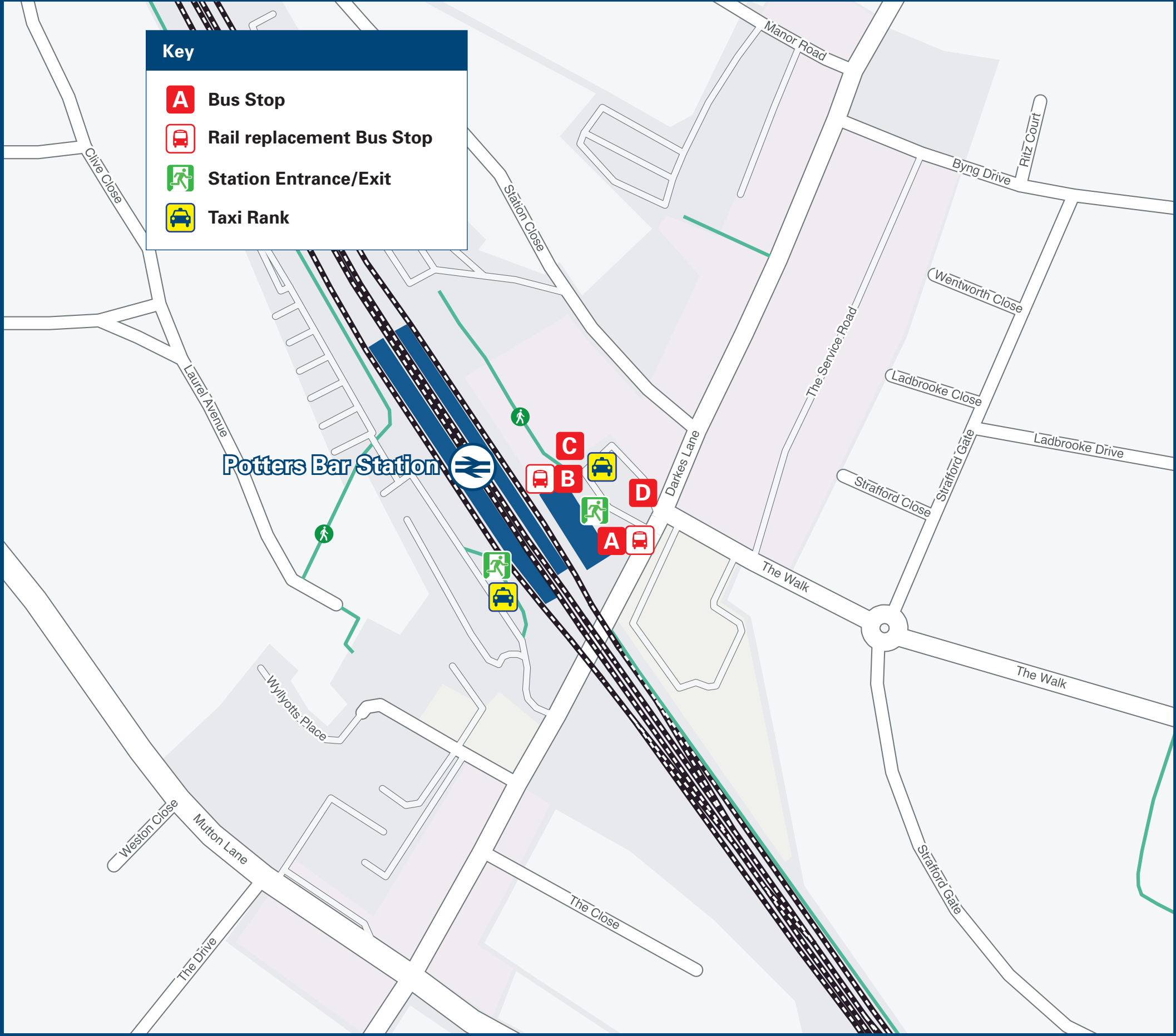




Potters Bar Station

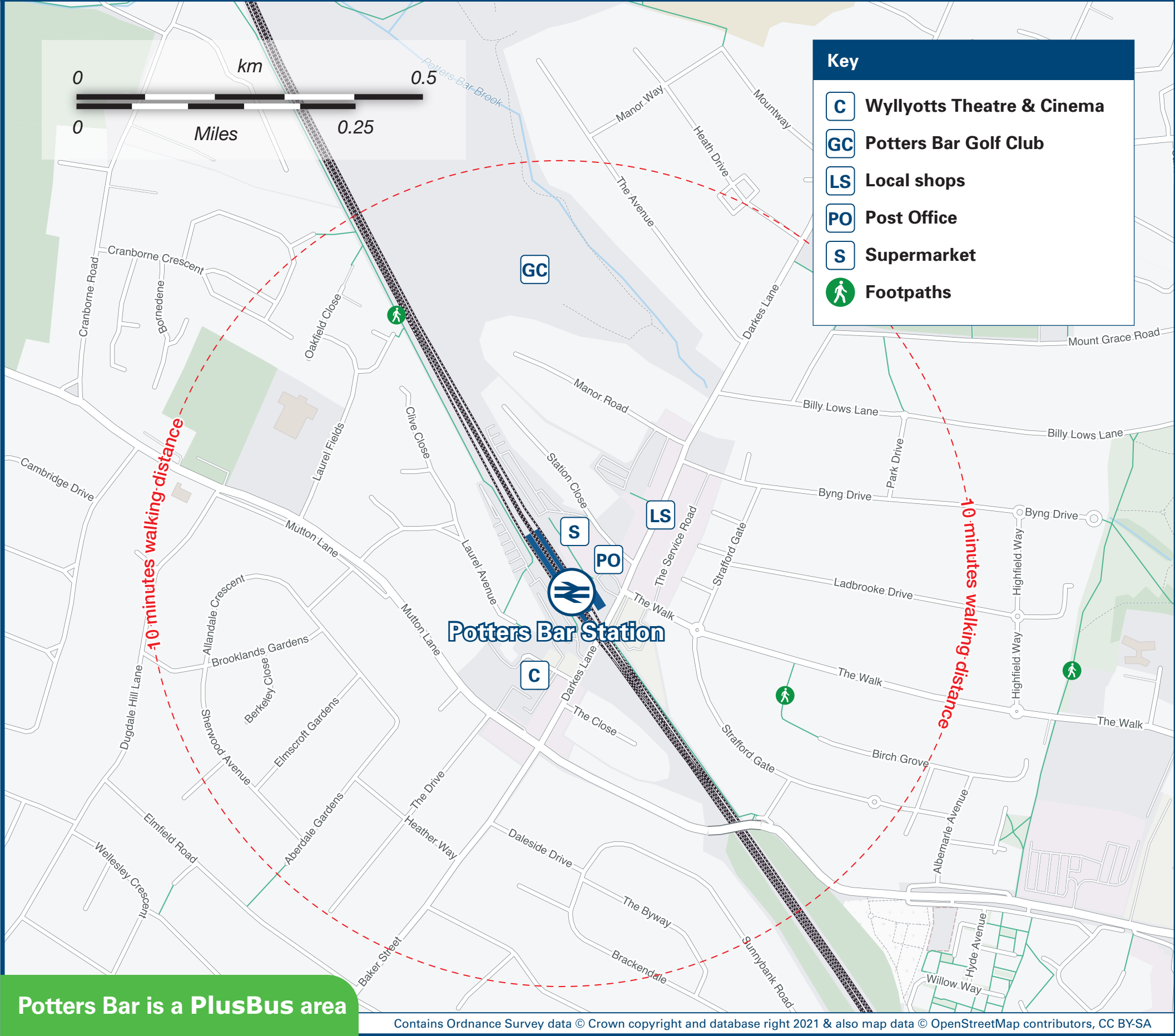
Onward Travel Information

Buses and Taxis



Rail replacement buses towards Alexandra Palace, Finsbury Park and Central London from stop {A}, also towards Welwyn Garden City and Stevenage from stop {B} outside the station entrance, on Drakes Lane.

Local area map



PlusBus is a discount price 'bus pass' that you buy with your train ticket. It gives you unlimited bus travel around your chosen town, on participating buses. Visit www.plusbus.info

Main destinations by bus

(Data correct at May 2023)



DESTINATION	BUS ROUTES	BUS STOP
Amos Grove	298	C
Borehamwood	398~	B
Botany Bay	313	D
Brookmans Park	610	B
Chase Farm Hospital	313	D
Cheshunt	242	A
Chingford	313	D
Cockfosters Station	298	C
Cuffley Station	242	A
Enfield Chase Station	313	D
Enfield Town	313	D
Flamstead End	242	A
Goff's Oak	242	A
Hadley Wood	298	C
Hatfield Business Park	610	B

DESTINATION	BUS ROUTES	BUS STOP
Hatfield (The Galleria Outlet Shopping)	610	B
Hatfield (Town Centre)	610	B
Hatfield (University of Hertfordshire) #	610	B
Little Heath	242 (Sun's & B Hol's only), 610	B
London Colney	84	B
Northaw	242	A
Oakwood	298	C
Oxlease	610	B
Potters Bar Town Service ##	PB1	A
Ponders End	313	D
South Hatfield	610	B
South Mimms	84, 398~	B
Southgate Station	298	C
St Albans City Centre (St Peter's Street)	84	B

DESTINATION	BUS ROUTES	BUS STOP
Swanley Bar	610	B
University of Hertfordshire (Hatfield) #	242 (Sun's & B Hol's only)	C
Waltham Cross	610	B
Welham Green	242 (Sun's & B Hol's only)	C

Notes

- PlusBus** destination, please see below for details
- Bus routes 84, 242, 298 and 313 run daily services.
- Bus routes 610 and PB1 run Mondays to Saturdays services, only. No Sunday services.
- For all bus times and days of operation please see bus stop timetables or contact Traveline.
- * Monday to Friday early morning and evening peak journeys only.
- # Bus route 610 serves The Forum and De Havilland campuses.
- ## Potters Bar Town Service PB1 serves Oakmere Lane, Chase Avenue, Carpenter Way, Oakmere Avenue and Shillitoe Avenue.
- ~ Bus route 398 runs a Mondays to Fridays service. No Saturday or Sunday service.
- Change here for London Underground Piccadilly Line trains towards Central London.
- Change here for connecting National Rail services.
- Direct trains operate to this destination from this station.

Taxis

Potters Bar station is served by a taxi rank or a cab office. Check availability before travelling, and pre-book if necessary. Please consider the following local operators: (Inclusion of this number doesn't represent any endorsement of the taxi firm)

Potters Bar Taxis Minicabs
01707 682 420

Potters Bar Minibus Company
01707 662 255

Manor Cars
01707 655 655

Further information about all onward travel

Local Cycle Info	National Cycle Info	Bus Times	NextBuses	PlusBus
hertsmere.gov.uk For more information about cycle routes.	sustrans.org.uk Sustrans is the UK's leading sustainable transport charity.	See timetable displays at bus stops. www.traveline.info 0871 200 22 33 calls cost 12p per minute plus your phone company's access charge	Find the bus times for your stop. Search for a bus stop by entering a postcode, street & town or a stop name & town.	plusbus.info A discount price 'bus pass' that you buy with your train ticket. It gives you unlimited bus travel around your chosen town, on participating buses.

National Rail Enquiries

Online	NRE App	Social Media	Alert Me	Contact Centre	PlusBike
nationalrail.co.uk	Free National Rail Enquiries app for iOS and Android	facebook.com/nationalrailenq @nationalrailenq	You can sign up to Alert Me messages on the National Rail Enquiries website where you can receive train and platform notifications directly to your smart phone. nationalrail.co.uk/alertme	03457 48 49 50 Calls cost no more than calls to geographic numbers (01 or 02) and may be recorded.	nationalrail.co.uk/plusbike For more information.



National Rail
Britain's train companies working together

