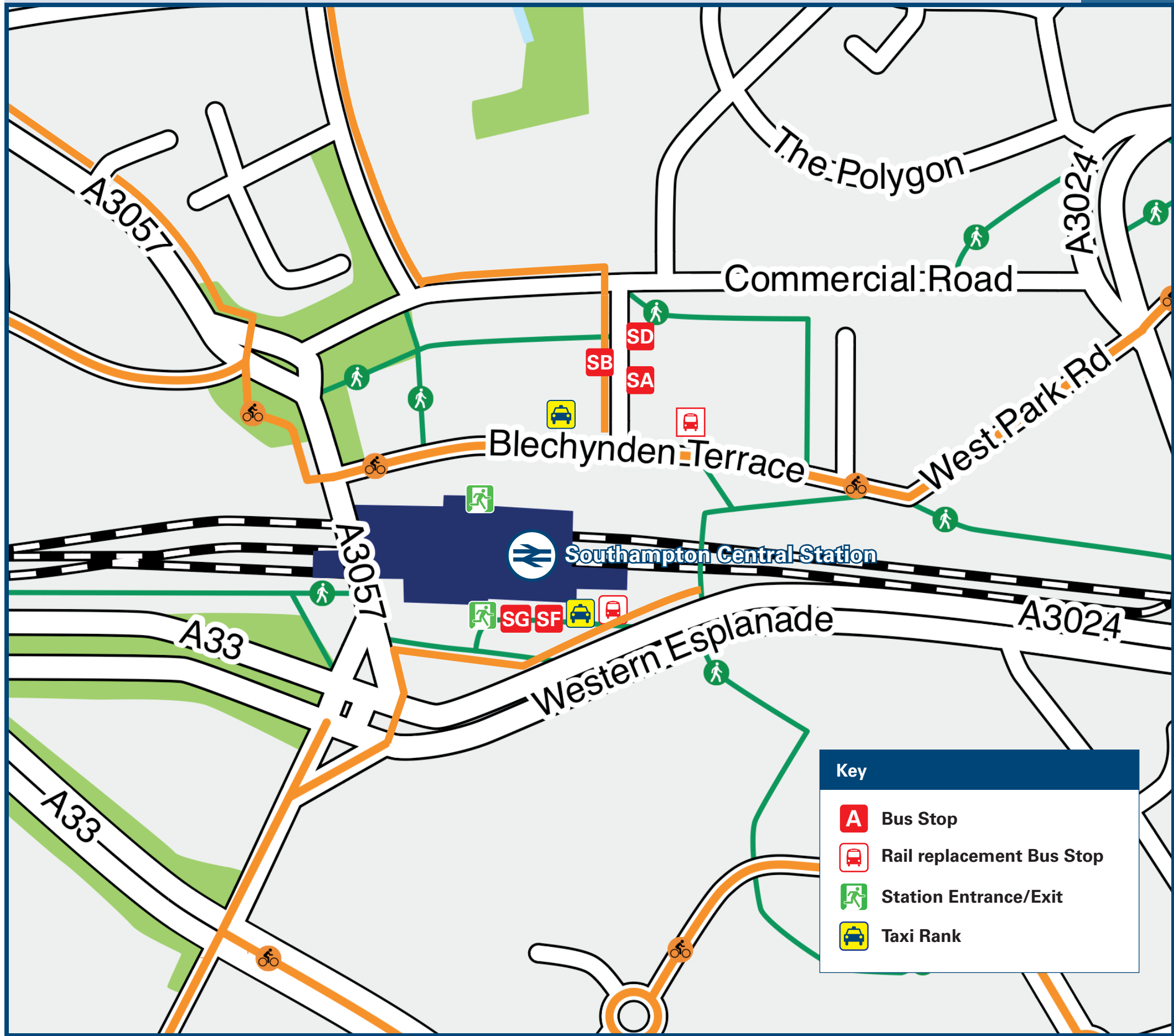




# Southampton Central Station

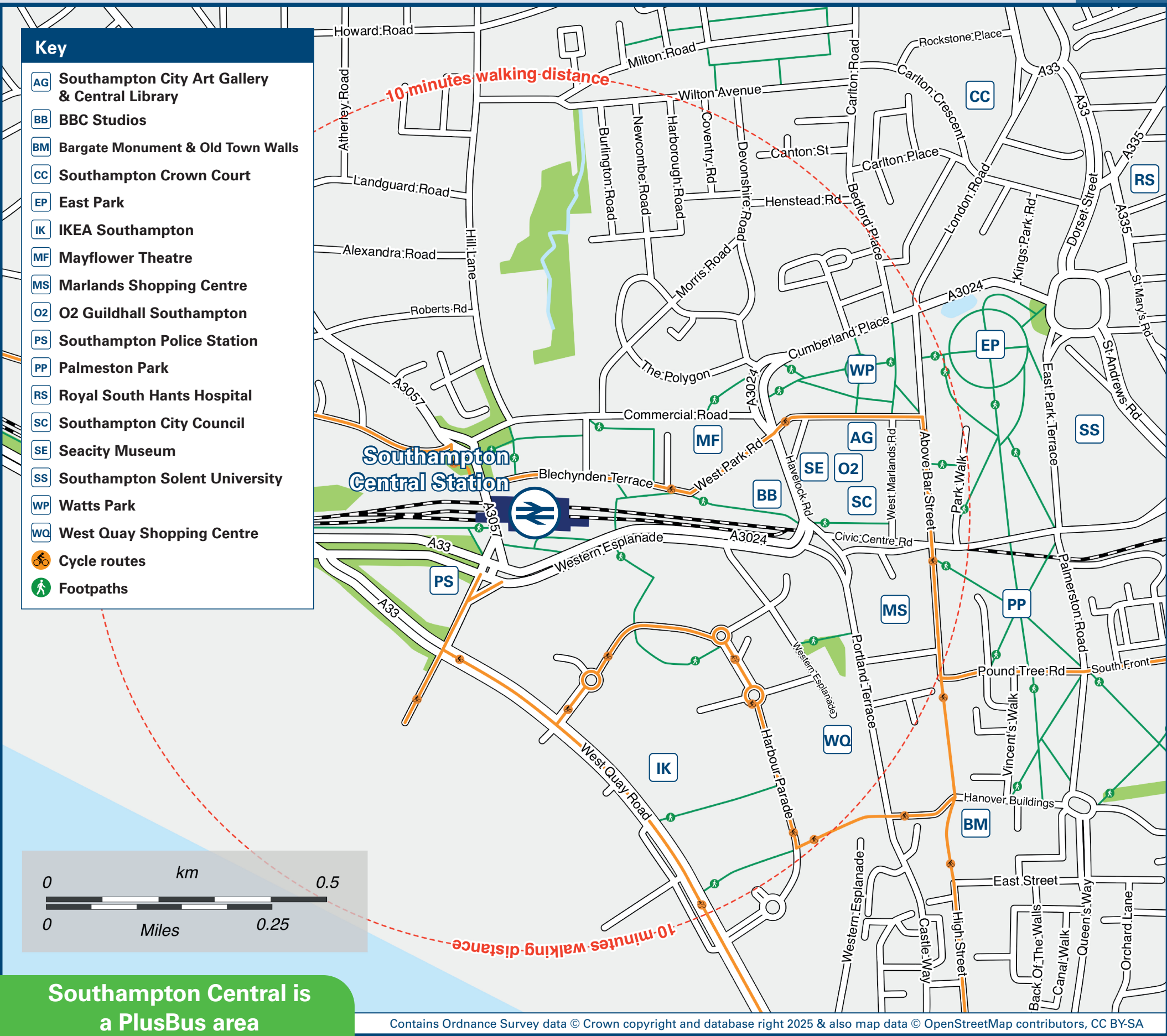
## Onward Travel Information

### Buses and Taxis



Rail replacement bus service goes from the north side (Blechynden Terrace) during engineering works. Overnight onward transport goes from the South side (West Quay side)

### Local area map



Southampton Central is a PlusBus area



Add **PlusBus** to your train ticket—now available on eTicket from leading rail ticketing apps—for unlimited bus travel in the **PlusBus** zone in your destination town or city. Visit [www.plusbus.info](http://www.plusbus.info)

### Main destinations by bus

(Data correct at December 2025)



DESTINATION	BUS ROUTES	BUS STOP
● Aldermoor	7, 17, 19, 19a, 21*	<b>S B</b>
Applemore Tesco	U6H	<b>S F</b>
● Bassett Green	U2B***	<b>S A</b>
● Bevois Valley	U6H	<b>S F</b>
● Bitterne	18	<b>S A</b>
Blackfield	9	<b>S B</b>
Calmore Estate	12	<b>S B</b>
Calshot	9	<b>S B</b>
● City Centre (Exit via Platform 1)	7, 17, 18, 19, 19a, U2***, U2B*** 4, 6, 8, 9, 11, 12, 21*, X7, X7R	<b>S A</b> <b>S D</b>
● City College	7	<b>S A</b>
Cowes (Isle of Wight) via Town Quay & Red Funnel Ferry	QC	<b>S F</b>
Dibden	8	<b>S B</b>
Dibden Purlieu	8, 9	<b>S B</b>
Fawley	9	<b>S B</b>
● General Hospital	7, 17, 19, 19a, 21* U6H	<b>S B</b> <b>S F</b>
● Hamble-le-Rice	15	<b>S F</b>
Holbury	9	<b>S B</b>
Hythe	8, 9	<b>S B</b>
Langley	9	<b>S B</b>
● Law Courts	U2***, U2B***	<b>S A</b>
● Lordshill	4, 7, 17, 19, 19a, 21*	<b>S B</b>
● Lowford	X4, X5	<b>S G</b>
Marchwood	8, 9**	<b>S B</b>
● Millbrook Estate	7, 18	<b>S B</b>
● Millbrook Roundabout	6, 8, 9, 11, 12, X7, X7R	<b>S B</b>

DESTINATION	BUS ROUTES	BUS STOP
● Netley Abbey	15	<b>S F</b>
● Northam	18	<b>S A</b>
North Baddesley	4	<b>S B</b>
● Ocean Village	19, 19a	<b>S A</b>
Ower (The Vine Inn)#	X7, X7R	<b>S B</b>
● Park Gate	X4	<b>S G</b>
Paultons Park (Main Entrance)#	X7##, X7R##	<b>S B</b>
● Portswood	U6H	<b>S F</b>
● Princess Anne Hospital	7, 17, 19, 19a, 21*	<b>S B</b>
● Redbridge	6, 8, 11, 12	<b>S B</b>
● Richard Taunton's College	19a, 21*	<b>S B</b>
Romsey	4, X7R	<b>S B</b>
Rownhams	4	<b>S B</b>
● RSH Hospital	U6H	<b>S F</b>
● Shirley (Shirley Road)	4, 7, 17, 18, 19, 19a	<b>S B</b>
● Shirley (Hill Lane / St James Road)	21*	<b>S B</b>
● Sholing	7, 19, 19a X4, X5	<b>S A</b> <b>S G</b>
● Southampton Common	U2***, U2B***	<b>S A</b>
● Southampton Solent University	18 U6H	<b>S A</b> <b>S F</b>
● St Mary's Stadium (for Southampton FC)	18 SF1~	<b>S A</b> <b>S F</b>
● Swaythling	U6H	<b>S F</b>
Testwood (Salisbury Road)	12, X7, X7R	<b>S B</b>
● Thornhill	18, 19, 19a	<b>S A</b>
Totton	6, 8, 11, 12, X7, X7R	<b>S B</b>

DESTINATION	BUS ROUTES	BUS STOP
● Town Quay	QC 19, 19a	<b>S F</b> <b>S A</b>
● University of Southampton (Avenue Campus)	U2***, U2B***	<b>S A</b>
● University of Southampton (Boldrewood Campus)	U6H	<b>S F</b>
● University of Southampton (Highfield Interchange - stop A)	U6H	<b>S F</b>
● Warsash Village Centre	X5	<b>S G</b>
● Weston Lane	7, 17 15	<b>S A</b> <b>S F</b>
● Woolston	7, 17, 19, 19a 15 X4, X5	<b>S A</b> <b>S F</b> <b>S G</b>

#### Notes

● **PlusBus** destination, please see below for details.  
For bus times and days of operation please contact Traveline on [www.traveline.info](http://www.traveline.info) or call: 0871 200 22 33  
Please note that Southampton area PlusBus tickets are not valid for travel on X7, X7R (operated by Salisbury Reds), X11 (Xelabus).  
● Direct trains operate to this destination from this station  
● Catamaran to West Cowes or Car Ferry to East Cowes  
\* Bus route 21 (Bluestar) operates a limited daytime service on Mondays to Fridays, only.  
\*\* Certain late evening journeys only  
\*\*\* Service variations apply during University vacations, please check prior to travel  
# Paultons Park is about 10 minutes walk from Ower, Romsey Road, which is served by all X7 and X7R journeys  
## Paultons Park is served directly by some X7 or X7R journeys during certain Wiltshire School Holidays - please check prior to travel  
~ Bus route SF1 runs on Match days, only.

### Taxis

Southampton Central is a major station where taxis are usually available on a rank. Advance booking is not normally necessary, unless arriving early in the morning or late at night. Operators who may accept bookings include: (Inclusion of this number doesn't represent any endorsement of the taxi firm)

**Southampton Taxis**  
023 8000 5005

**Radio Taxis**  
02380 666 666

**West Quay**  
02380 999 999

### Further information about all onward travel

Local Cycle Info	National Cycle Info	Bus Times	PlusBus
<a href="http://southampton.gov.uk">southampton.gov.uk</a> For more information about cycle routes.	<a href="http://walkwheelcycletrust.org.uk">walkwheelcycletrust.org.uk</a>	See timetable displays at bus stops.  <a href="http://www.traveline.info">www.traveline.info</a> 0871 200 22 33 calls cost 12p per minute plus your phone company's access charge	 <a href="http://plusbus.info">plusbus.info</a> PlusBus is a discount price 'bus pass' that you buy with your train ticket. It gives you unlimited bus travel around your chosen town, on participating buses. Visit <a href="http://www.plusbus.info">www.plusbus.info</a>

### National Rail Enquiries

Online	NRE App	Social Media	Alert Me	Contact Centre	PlusBike
<a href="http://nationalrail.co.uk">nationalrail.co.uk</a>	Free National Rail Enquiries app for iOS and Android	<a href="https://facebook.com/nationalrailenq">facebook.com/nationalrailenq</a> @nationalrailenq	You can sign up to Alert Me messages on the National Rail Enquiries website where you can receive train and platform notifications directly to your smart phone. <a href="http://nationalrail.co.uk/alertme">nationalrail.co.uk/alertme</a>	03457 48 49 50 Calls cost no more than calls to geographic numbers (01 or 02) and may be recorded.	<a href="http://nationalrail.co.uk/plusbike">nationalrail.co.uk/plusbike</a> For more information.

**South Western Railway**



**National Rail**  
Britain's train companies working together

