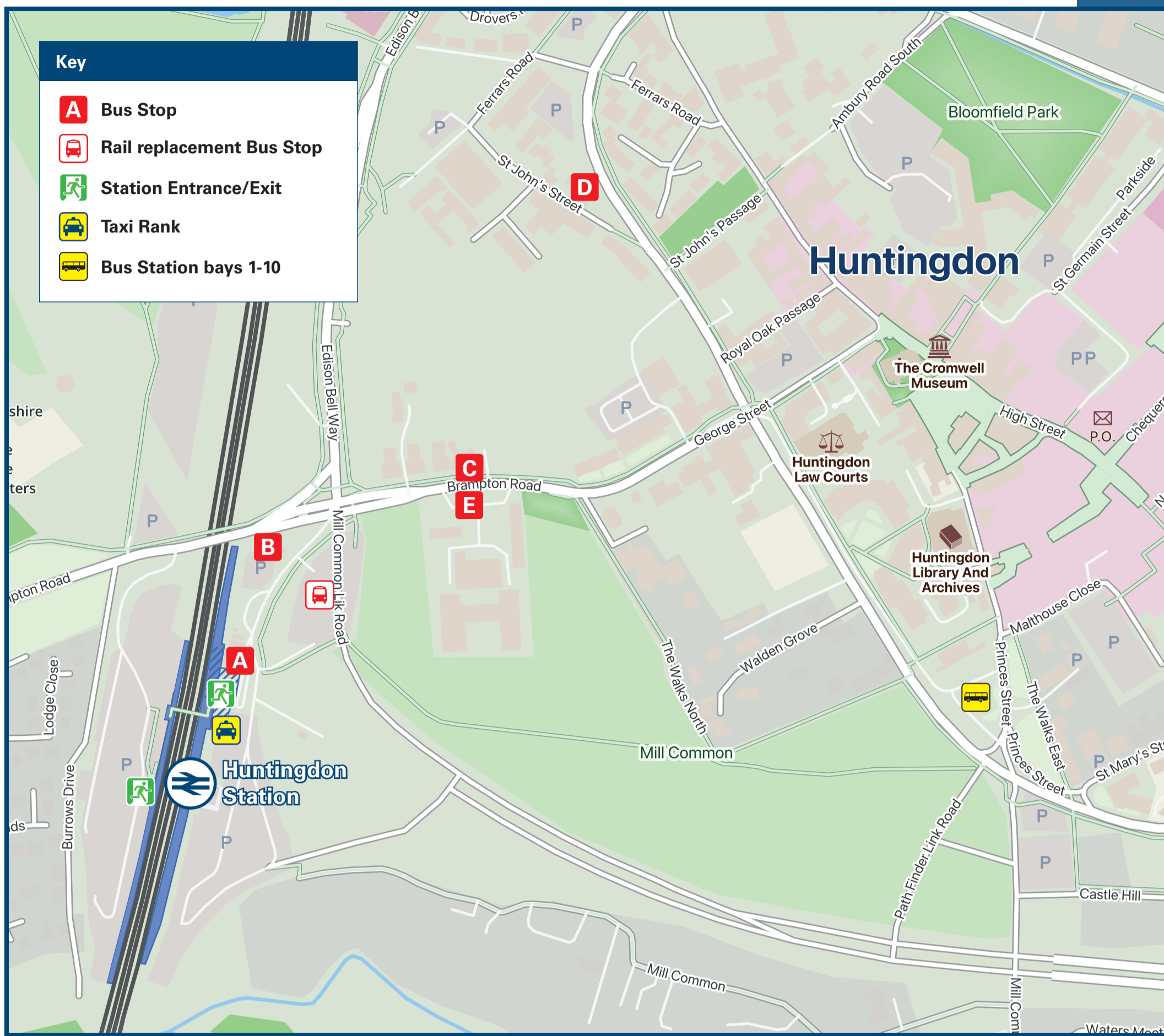




Huntingdon Station

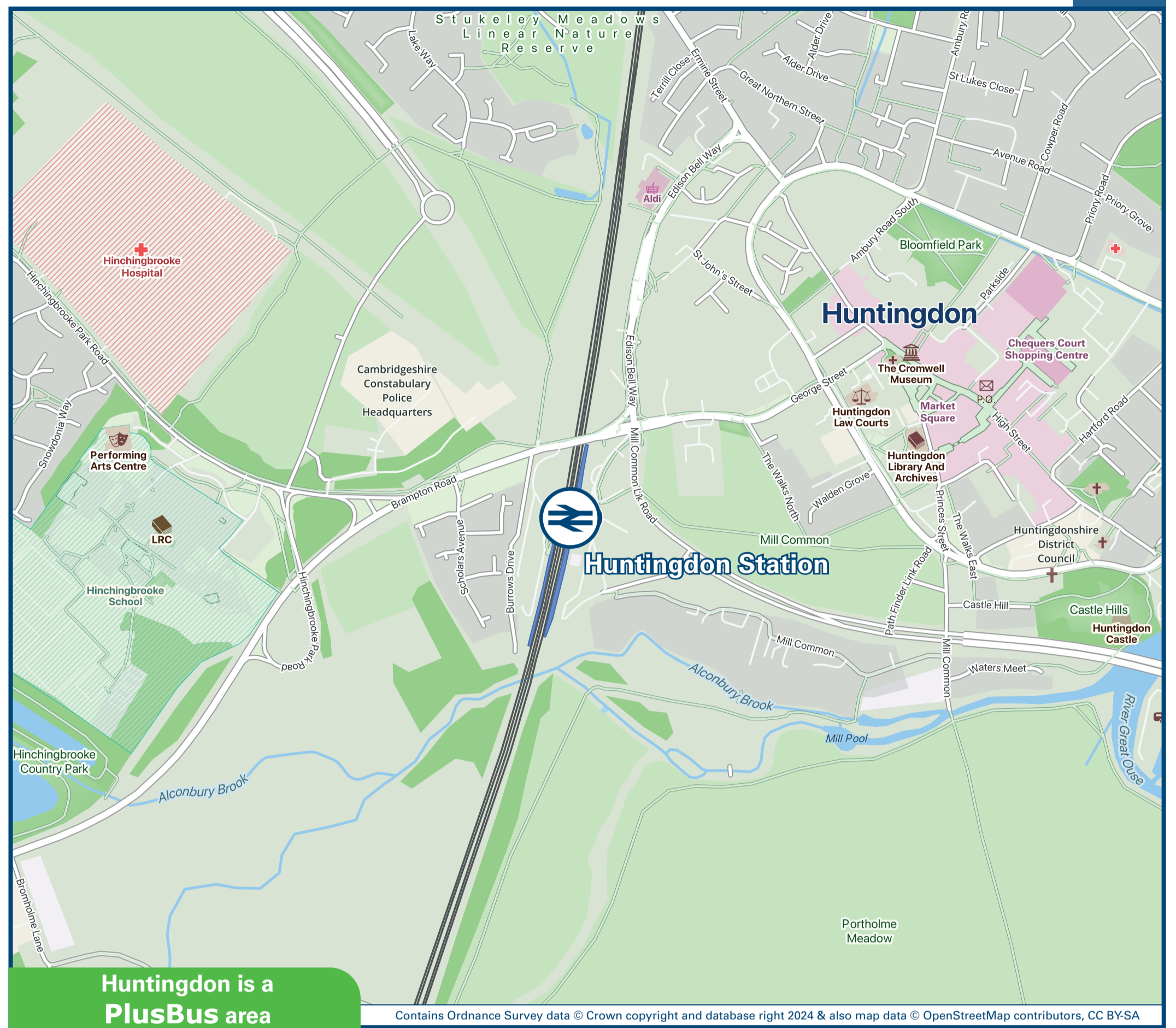
Onward Travel Information

Buses and Taxis



Rail Replacement Buses depart from the Railway station bus stop.

Local area map



PlusBus is a discount price 'bus pass' that you buy with your train ticket. It gives you unlimited bus travel around your chosen town, on participating buses. Visit www.plusbus.info

Main destinations by bus

(Data correct at June 2024)



DESTINATION	BUS ROUTES	BUS STOP
Alconbury Hill	904	E, Bus Stn Bay 8
	AW1	A, Bus Stn Bay 1
Alconbury Weald	904	E, Bus Stn Bay 8
	AW1	A, Bus Stn Bay 1
● Brampton	66	B
Buckden	66	B
Cambourne	X3	Bus Stn Bay 4
Cambridge (City Centre)	"thebusway route B"	C
	X3	Bus Stn Bay 4, Bus Stn Bay 5
Chatteris	305*	D, Bus Stn Bay 2
● Godmanchester	66, X3	C, Bus Stn Bay 4
Great Stukeley	AW1	A, Bus Stn Bay 1
	904	E, Bus Stn Bay 8
● Hartford (Main Street)	"thebusway route B"	C
● Hartford (Sapley Road)	305*	D, Bus Stn Bay 2
● Hinchingsbrooke Hospital	X3~	B
	66, "thebusway route B"	B

DESTINATION	BUS ROUTES	BUS STOP
● Huntingdon (Bus Station)	66, 904, AW1, "thebusway route B"	C
Huntingdon (Racecourse)	"Shuttle Bus" (Race Days only)	Outside this Station
Little Paxton	66	B
Little Stukeley	904	E, Bus Stn Bay 8
	AW1	A, Bus Stn Bay 1
Longstanton (Park & Ride Site)	"thebusway route B"	C
Oakington	"thebusway route B"	C
Old Hurst	305*	D, Bus Stn Bay 2
● Oxmoor Estate (Huntingdon)	305* "thebusway route B"	C
Papworth Everard	X3	Bus Stn Bay 4
Peterborough	904	E, Bus Stn Bay 8
RAF Alconbury (near Little Stukeley)	904	E, Bus Stn Bay 8
	AW1	A, Bus Stn Bay 1

DESTINATION	BUS ROUTES	BUS STOP
RAF Wyton	"thebusway route B" 305*	C, D, Bus Stn Bay 2
Ramsey	305*	D, Bus Stn Bay 2
Sapley	305*	D, Bus Stn Bay 2
Sawtry	904	E, Bus Stn Bay 8
Stilton	904	E, Bus Stn Bay 8
St Ives	"thebusway route B"	C
St Neots	66	B
Warboys	305*	D, Bus Stn Bay 2
Wistow	305*	D, Bus Stn Bay 2

Notes

- PlusBus destination, please see below for details.
- Bus route AW1, X3 & "thebusway route B" operate daily, Mondays to Sundays.
- Bus routes 66 and 904 operate Mondays to Saturdays. No Sunday or Bank Holiday service.
- For bus times, please see bus stop timetables at this station or at the bus station, or contact TraveLine.
- * Bus route 305 operates a limited service on Mondays to Saturdays only. No Sunday service.
- ~ To this destination bus route X3 operates from Brampton Road bus stop, in the evenings, only.
- 🚆 Direct train services operate to this destination from this Station.

Taxis

Huntingdon station is served by a taxi rank or a cab office. Check availability before travelling, and pre-book if necessary. Please consider the following local operators: (Inclusion of this number doesn't represent any endorsement of the taxi firm)

John's Taxis
01480 450 092

Eagle Cars Huntingdon
01480 393 935

Amigo Carz
01480 450 001

Further information about all onward travel

Local Cycle Info huntsdc.gov.uk For more information about cycle routes.	National Cycle Info sustrans.org.uk Sustrans is the UK's leading sustainable transport charity.	Bus Times See timetable displays at bus stops. www.traveline.info 0871 200 22 33 calls cost 13p per minute plus your phone company's access charge	NextBuses Find the bus times for your stop. Search for a bus stop by entering a postcode, street & town or a stop name & town.	PlusBus plusbus.info A discount price 'bus pass' that you buy with your train ticket. It gives you unlimited bus travel around your chosen town, on participating buses.
---	---	---	--	--

National Rail Enquiries

Online nationalrail.co.uk	NRE App Free National Rail Enquiries app for iOS and Android	Social Media facebook.com/nationalrailenq @nationalrailenq	Alert Me You can sign up to Alert Me messages on the National Rail Enquiries website where you can receive train and platform notifications directly to your smart phone. nationalrail.co.uk/alertme	Contact Centre 03457 48 49 50 Calls cost no more than calls to geographic numbers (01 or 02) and may be recorded.	PlusBike nationalrail.co.uk/plusbike For more information.
---	--	---	---	--	--

Great Northern



National Rail
Britain's train companies working together

