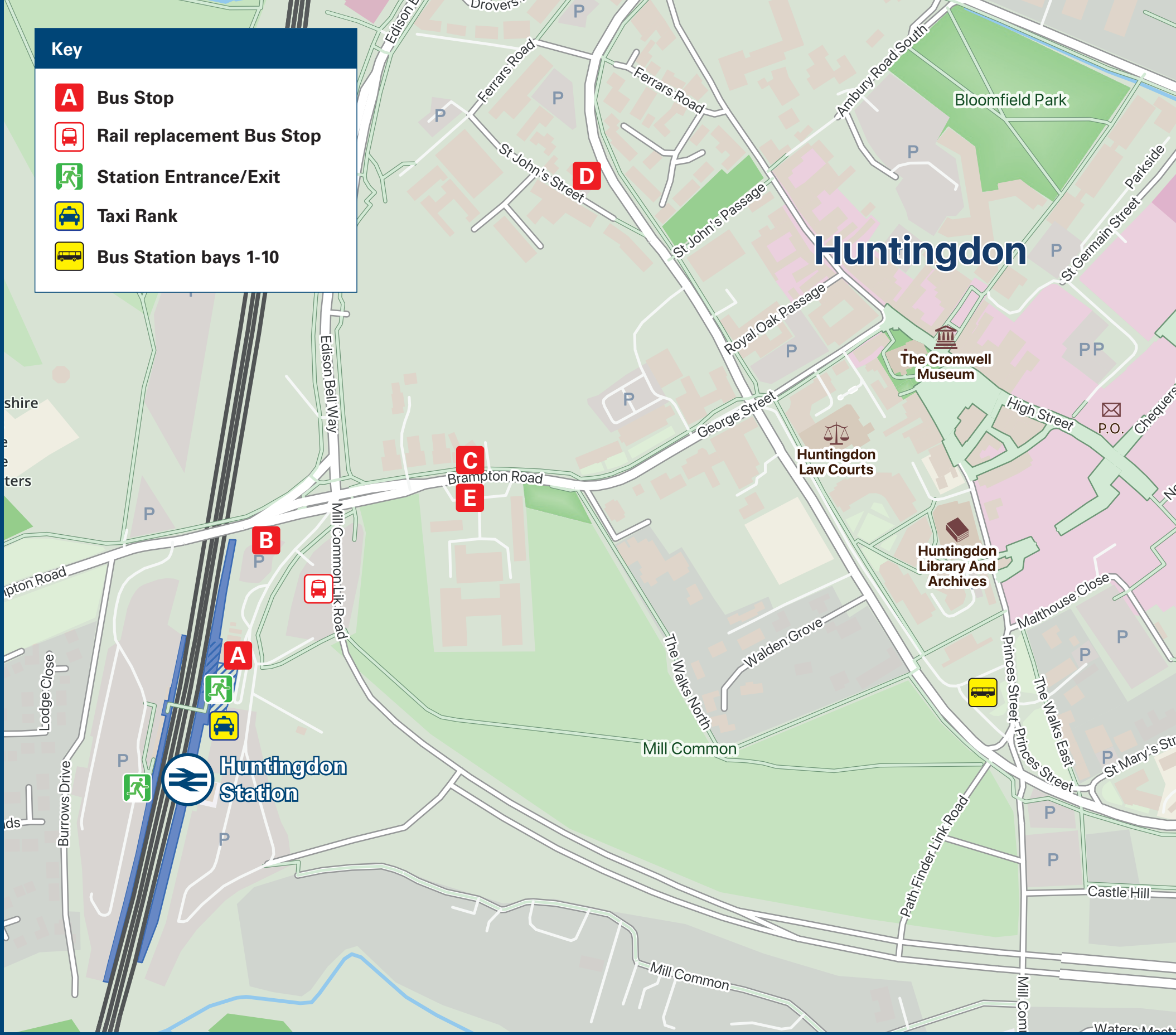




Huntingdon Station

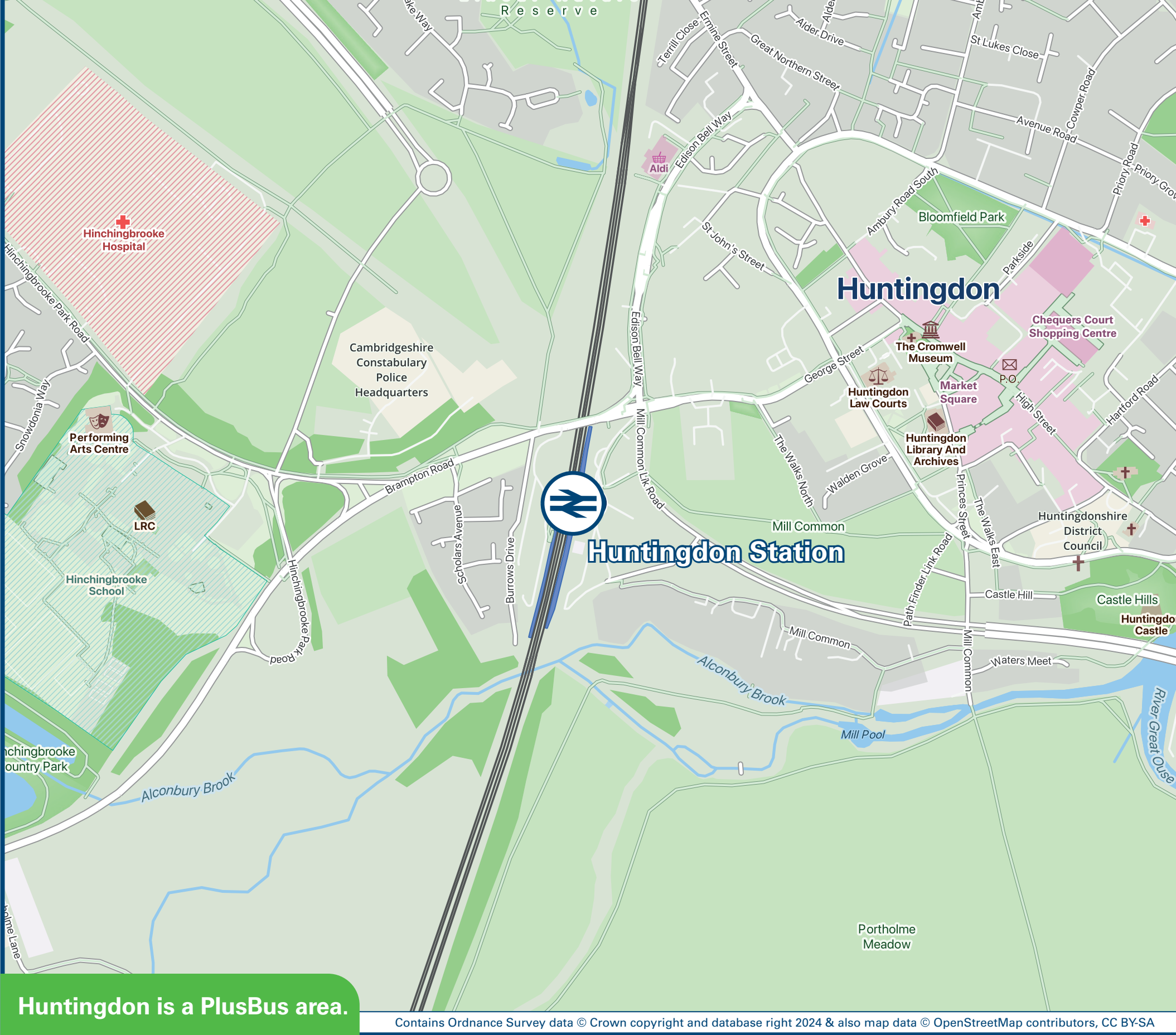
Onward Travel Information

Buses and Taxis



Rail Replacement Buses depart from the Railway station bus stop.

Local area map



Huntingdon is a PlusBus area.



PlusBus is a discount price 'bus pass' that you buy with your train ticket. It gives you unlimited bus travel around your chosen town, on participating buses. Visit www.plusbus.info

Main destinations by bus

(Data correct at May 2025)



DESTINATION	BUS ROUTES	BUS STOP
Alconbury Hill	904 AW1	A A, Bus Stn Bay 1
Alconbury Weald	904 AW1	A A, Bus Stn Bay 1
Brampton	66	Bus Stn Bay 7
Buckden	66	Bus Stn Bay 7
Cambourne	X3	Bus Stn Bay 4
Cambridge (City Centre)	T1 "thebusway route B" X3	A C Bus Stn Bay 4
Chatteris	303#	D, Bus Stn Bay 2
Godmanchester	66, X3	C, Bus Stn Bay 4
Great Stukeley	AW1 904	A, Bus Stn Bay 1 A
Hartford (Main Street)	"thebusway route B"	C
Hartford (Sapley Road)	303#, 305*	D, Bus Stn Bay 2
Hinchingbrooke Hospital	X3~ 66, "thebusway route B"	E, Bus Stn Bay 7 Bus Stn Bay 7, B

DESTINATION	BUS ROUTES	BUS STOP
Huntingdon (Bus Station)	Approximate 15 minutes walk from this station (see maps for details) T1 66, 904, AW1, "thebusway route B", T1 "Shuttle Bus" (Race Days only)	A C Outside this Station
Huntingdon (Racecourse)		Outside this Station
Little Paxton	66	Bus Stn Bay 7
Little Stukeley	904 AW1	A A, Bus Stn Bay 1
Longstanton (Park & Ride Site)	T1 "thebusway route B"	A C
Oakington	"thebusway route B"	C
Old Hurst	303#, 305*	D, Bus Stn Bay 2
Oxmoor Estate (Huntingdon)	303#, 305* "thebusway route B"	D, Bus Stn Bay 2 C
Papworth Everard	X3	Bus Stn Bay 4
Peterborough	904	A
RAF Alconbury (near Little Stukeley)	904 AW1	A A, Bus Stn Bay 1
RAF Wyton	"thebusway route B" 303#, 305*	C D, Bus Stn Bay 2

DESTINATION	BUS ROUTES	BUS STOP
Ramsey	303#, 305*	D, Bus Stn Bay 2
Sapley	303#, 305*	D, Bus Stn Bay 2
Sawtry	904	A
Stilton	904	A
St Ives	"thebusway route B"	C
St Neots	66	Bus Stn Bay 7
Warboys	303#, 305*	D, Bus Stn Bay 2
Wistow	303#, 305*	D, Bus Stn Bay 2

Notes

- PlusBus destination, please see below for details.
- Bus route AW1, X3 & "thebusway route B" operate daily, Mondays to Sundays.
- Bus routes 66 and 904 operate Mondays to Saturdays. No Sunday or Bank Holiday service.
- For bus times and days of operation please contact Traveline on www.traveline.info or call: 0871 200 22 33
- Direct train services operate to this destination from this Station.
- * Bus route 305 operates a limited service on Mondays to Fridays, only. No Saturdays or Sundays service.
- # Bus route 303 operates a limited service on Mondays to Saturdays only. No Sunday service.
- ~ To this destination bus route X3 operates late night services, only.

Taxis

Huntingdon station is served by a taxi rank or a cab office. Check availability before travelling, and pre-book if necessary. Please consider the following local operators: (Inclusion of this number doesn't represent any endorsement of the taxi firm)

Panther Taxis
01480 412 333

T & T Taxi
01480 436 646

Hunts Taxis
01480 414 500

Further information about all onward travel

Local Cycle Info	National Cycle Info	Bus Times	NextBuses	PlusBus
huntsdc.gov.uk For more information about cycle routes.	sustrans.org.uk Sustrans is the UK's leading sustainable transport charity.	See timetable displays at bus stops. www.traveline.info 0871 200 22 33 call cost 15p per minute plus your phone company's access charge	Find the bus times for your stop. Search for a bus stop by entering a postcode, street & town or a stop name & town.	plusbus.info A discount price 'bus pass' that you buy with your train ticket. It gives you unlimited bus travel around your chosen town, on participating buses.

National Rail Enquiries

Online	NRE App	Social Media	Alert Me	Contact Centre	PlusBike
nationalrail.co.uk	Free National Rail Enquiries app for iOS and Android	facebook.com/nationalrailenq @nationalrailenq	You can sign up to Alert Me messages on the National Rail Enquiries website where you can receive train and platform notifications directly to your smart phone. nationalrail.co.uk/alertme	03457 48 49 50 Calls cost no more than calls to geographic numbers (01 or 02) and may be recorded.	nationalrail.co.uk/plusbike For more information.

Great Northern



National Rail
Britain's train companies working together

