



Exeter St Davids Station

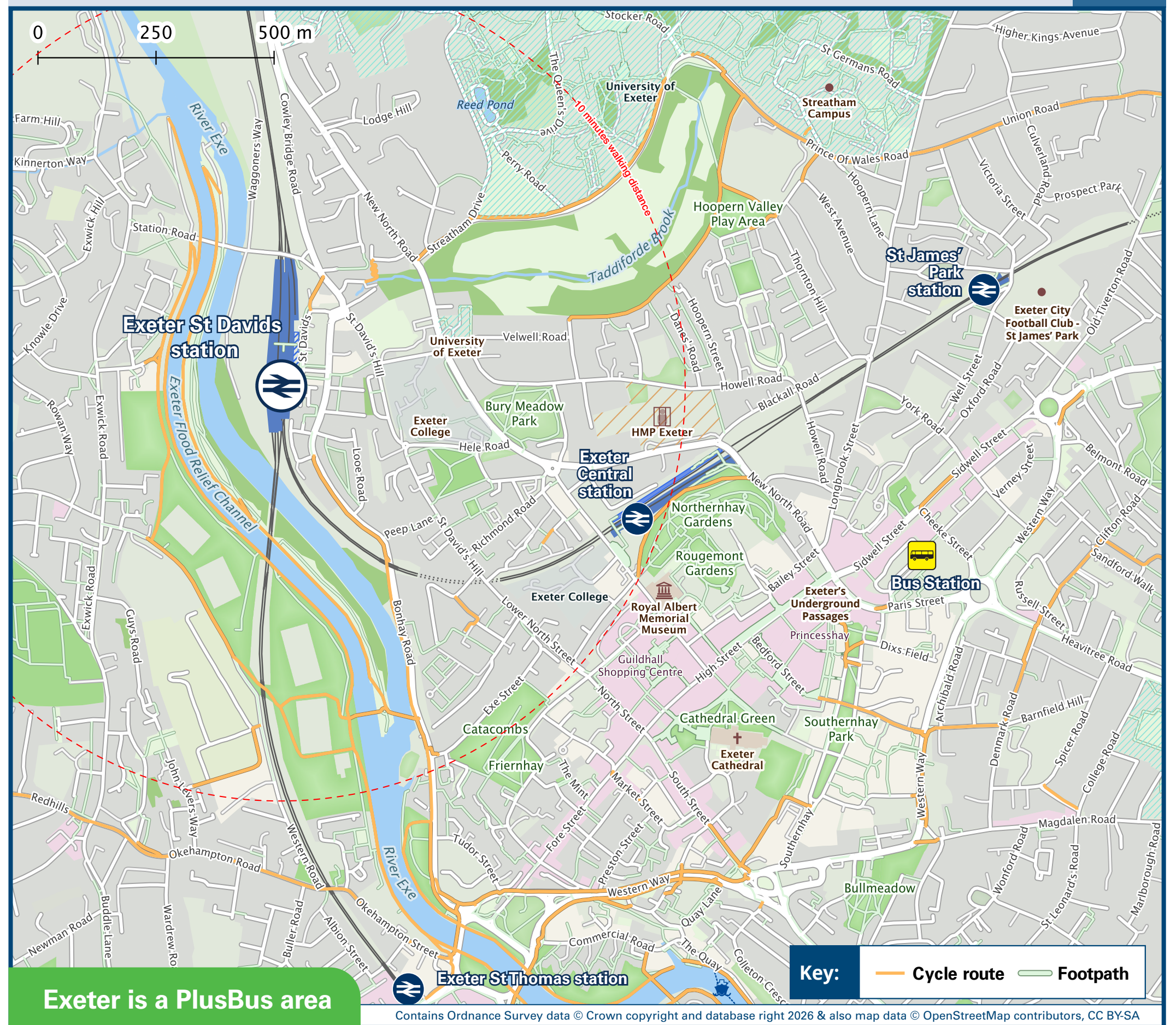
Onward Travel Information

Buses and Taxis



Rail replacement buses/coaches will depart from the front of the station

Local area map



Exeter is a PlusBus area. Add PlusBus to your train ticket—now available on eTicket from leading rail ticketing apps—for unlimited bus travel in the PlusBus zone in your destination town or city. Visit www.plusbus.info

Main destinations by bus

(Data correct at January 2026)

| DESTINATION | BUS ROUTES | BUS STOP |
|---------------------------------------|--|----------|
| Bickleigh (for Devon Railway Centre) | 355* | B |
| | 55 | C |
| Cheriton Cross | 66 | B |
| Clyst Honiton | 4 | B |
| Cranbrook | 4 | B |
| Crediton | 5B* | B |
| | 5, 5A, 5C, 369* | C |
| Crockernwell | 66 | B |
| Exeter City area - | | |
| | H | A |
| - City Centre (Bus Station) # | 4, 4A, 5B*, 66, 355* | B |
| | 5, 5A, 5C*, 55 | D |
| - City Centre (Central Station) | 12-15 minutes walk (please see Local Area Map) | |
| | H | A |
| - City Centre (High Street) # | H | A |
| | K | D |
| - Clyst Honiton (Exeter Science Park) | 4 | B |
| - Cowley Bridge | 5B*, 355* | B |
| | 5, 5A, 5C*, 55, 369* | C |
| - Digby | H | A |

| DESTINATION | BUS ROUTES | BUS STOP |
|---|----------------------|----------|
| - Exeter Business Park | 4, 4A | B |
| - Heavitree | 4, 4A | B |
| - Royal Devon & Exeter Hospital | H | A |
| - St Leonards (for County Hall) | H | A |
| - St Thomas | 66 | B |
| - University of Exeter (St Lukes Campus) | 4, 4A | B |
| - University of Exeter (Streatham Pennsylvania Knightley) | 4 | B |
| - Wonford | H | A |
| Exeter International Airport | 4A | B |
| | 5B* | B |
| Half Moon Village | 5, 5A, 5C*, 55, 369* | C |
| Morchard Bishop | 369* | C |
| | 5B* | B |
| Newton St Cyres | 5, 5A, 5C*, 369* | C |
| | 66 | B |
| Okehampton | 5A | C |
| Pathfinder Village | 66 | B |
| Silverton | 355* | B |
| | 55 | C |
| Sticklepath (& South Zeal) | 66 | B |

| DESTINATION | BUS ROUTES | BUS STOP |
|----------------|------------|----------|
| Stoke Canon | 355* | B |
| | 55 | C |
| Tedbun St Mary | 66 | B |
| Thorverton | 355* | B |
| | 355* | B |
| | 55 | C |
| Whiddon Down | 66 | B |

Notes

- PlusBus destination, please see below for details.
- PlusBus tickets are valid within the Exeter PlusBus zone on Stagecoach South West, Dartline and Country Buses only.
- Bus routes 4, 4A, 5, 66 and K operate daily services.
- Bus routes 5A and H operate services on Mondays to Saturdays, only.
- For bus times and days of operation please contact TraveLine on www.traveline.info or call: 0871 200 22 33
- Direct trains operate to this destination from this station
- For the Dartmoor Railway.
- Change here for connecting domestic and international airline flights.
- * Bus routes 5B, 5C, 355 and 369 operate limited Mondays to Saturdays services, only.
- # Further bus services are available from Exeter High Street and Exeter Bus Station to all parts of Exeter City, and other destinations.

Taxis

Exeter St Davids station is served by a taxi rank or a cab office. Check availability before travelling and pre-book if necessary. Please consider using the following local operators: (Inclusion of this number doesn't represent any endorsement of the taxi firm)

Apple Taxis
01392 666 666

Frankies taxi
01392 332 211

Street Cars
01392 494 929

Further information about all onward travel

| | | | |
|---|--|---|---|
| Local Cycle Info exeter.gov.uk For more information about cycle routes. | National Cycle Info walkwheelcycletrust.org.uk | Bus Times See timetable displays at bus stops. www.traveline.info 0871 200 22 33 calls cost 10p per minute plus your phone company's access charge | PlusBus plusbus.info PlusBus is a discount price 'bus pass' that you buy with your train ticket. It gives you unlimited bus travel around your chosen town, on participating buses. Visit www.plusbus.info |
|---|--|---|---|

National Rail Enquiries

| | | | | | |
|---|--|---|---|--|--|
| Online nationalrail.co.uk | NRE App Free National Rail Enquiries app for iOS and Android | Social Media facebook.com/nationalrailenq @nationalrailenq | Alert Me You can sign up to Alert Me messages on the National Rail Enquiries website where you can receive train and platform notifications directly to your smart phone. nationalrail.co.uk/alertme | Contact Centre 03457 48 49 50 Calls cost no more than calls to geographic numbers (01 or 02) and may be recorded. | PlusBike nationalrail.co.uk/plusbike For more information. |
|---|--|---|---|--|--|



This poster shows details of popular destinations and main, frequent bus routes. Additional services may run, so please check with TraveLine or see posters at local bus stops. Whilst considerable care has been taken to ensure the information contained on this poster is correct and accurate, National Rail cannot accept responsibility for any loss or inconvenience caused by any errors or omissions, or for loss, damage, injury or inconvenience relating to the cancellation, alteration, delay or diversion of a service. For any feedback, please e-mail comments@onwardtravelposters.com

Scan this code with your mobile for full station information.