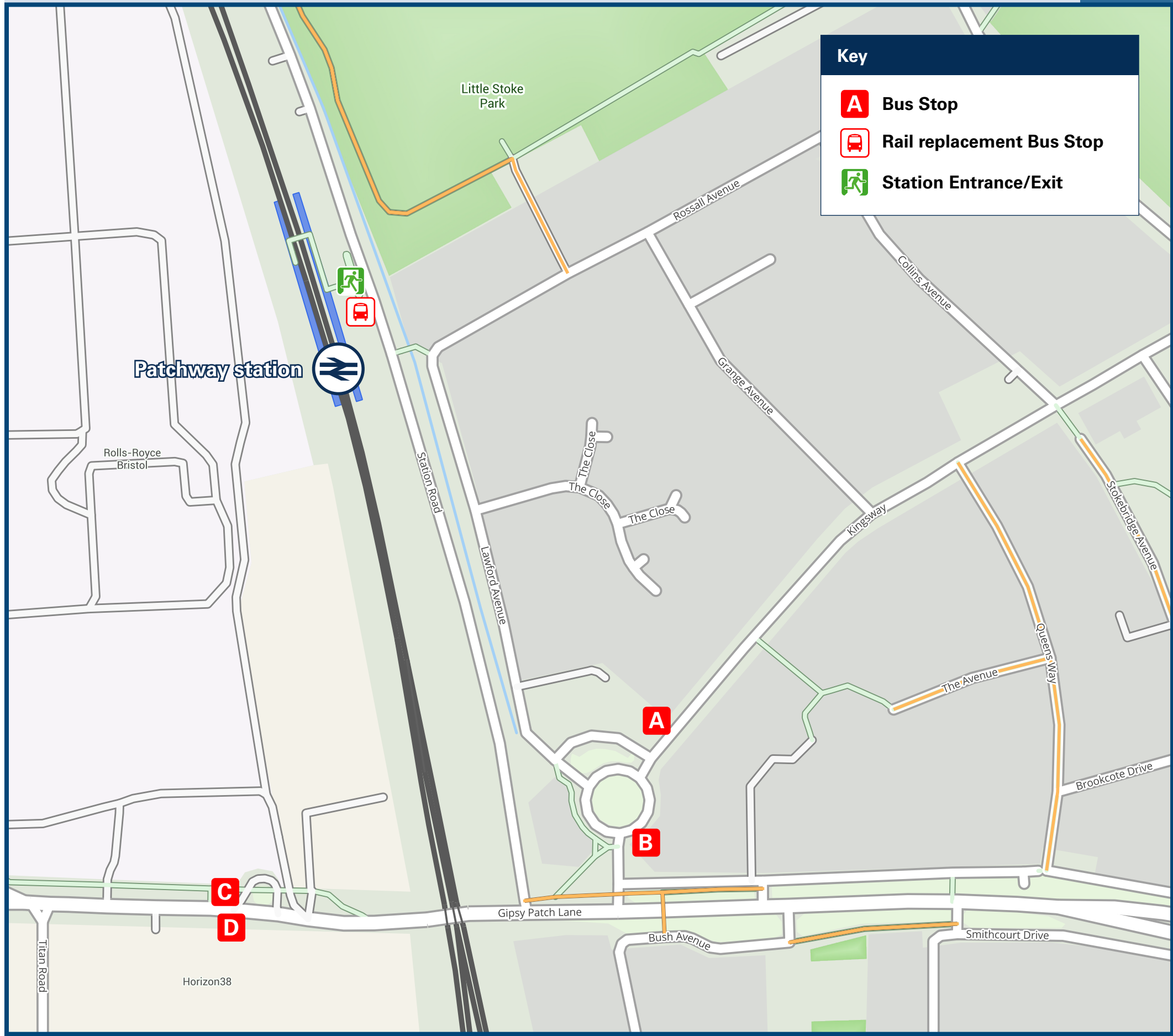




Patchway Station

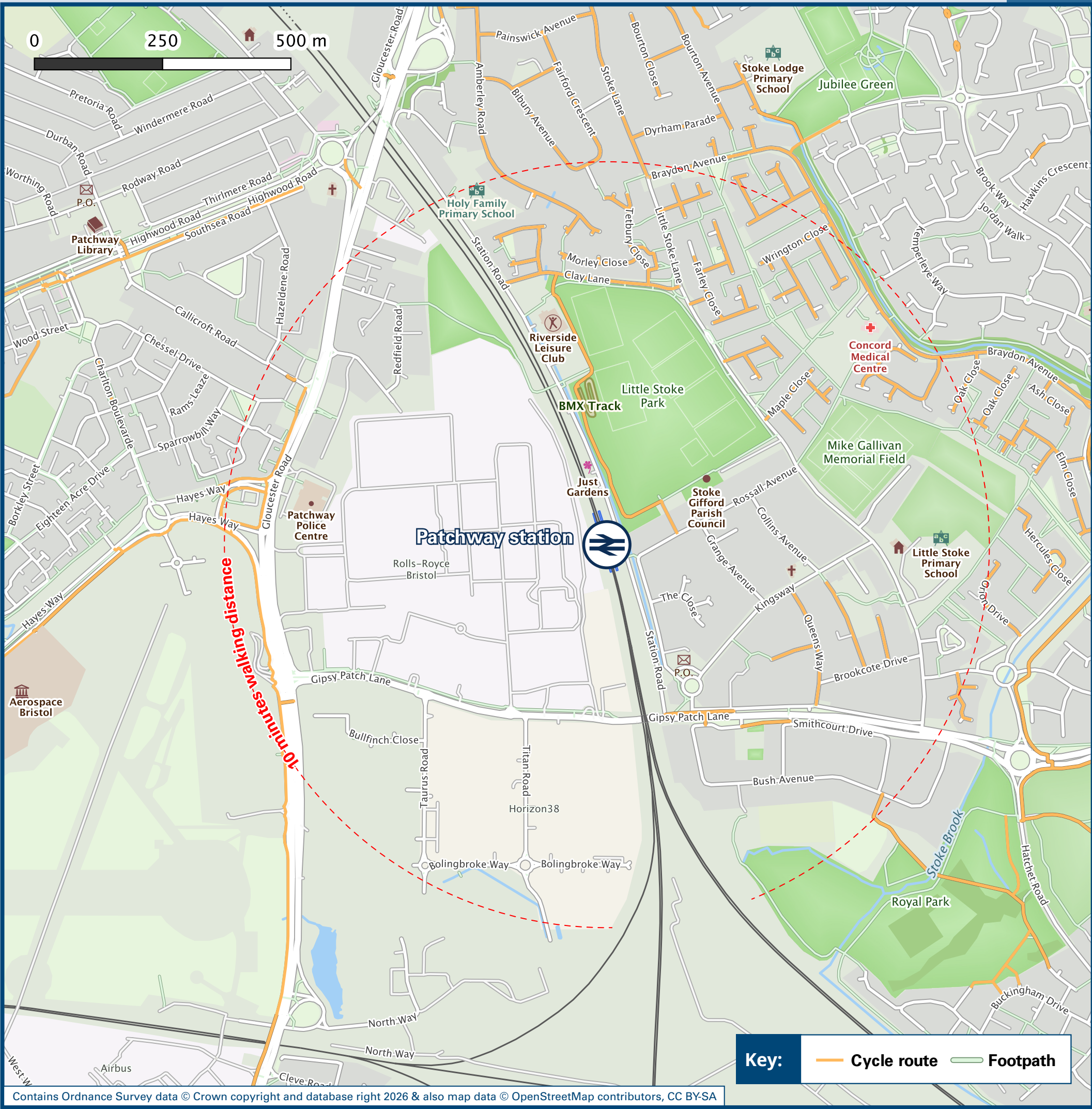
Onward Travel Information

Buses



Rail replacement buses will collect from the front of the station.

Local area map



Main destinations by bus

(Data correct at January 2026)



DESTINATION	BUS ROUTES	BUS STOP
Bristol City Centre	m4	C
Bristol Parkway Station	12	B
Cabot Circus (Bristol)	m4	C
Cribbs Causeway (Bus Station)	12	A
Cribbs Causeway (Retail Park)	m4	D
Cribbs Causeway (The Mall)	12	A
Cribbs Causeway (The Venue - alight at the Retail Park)	m4	D

DESTINATION	BUS ROUTES	BUS STOP
Cribbs Causeway (The Venue - alight at the Retail Park)	12	A
Easter Compton	12	A
Frenchay Campus (University of the West of England)	m4	C
Marsh Common	12	A
Patchway (Coniston Road Shops)	12	A
Pilning	12	A
Severn Beach	12	A
Stoke Gifford	12	B
Stoke Gifford	m4	C

DESTINATION	BUS ROUTES	BUS STOP
Wild Place Project (alight at Easter Compton Golf Club)	12	A

Notes

Bus routes 12 & m4 operate daily services.

Local bus services serving the wider area can be accessed via interchange points at Cribbs Causeway, The Mall and Bristol Parkway Station.

Timetable information is provided at local bus stops indicated on the map above. Alternatively contact Traveline (refer to further information section).

For bus times please see bus stop timetables, or contact travelwest.info

With no fixed timetable or route, WESTlink runs with a fleet of minibuses across most of the West of England outside Bath and Bristol city centres. You can book a journey by selecting your pick-up and drop-off points in the WESTlink mobile app, or by calling 0117 457 8561 (Monday-Saturday, 5:30am-9:30pm). Services operate from 7am to 7pm in most areas. Find out more at westlink.app.

Direct trains operate from this station to this destination.

Change here for connecting National Rail services.

Taxis

Patchway Station has no taxi rank or cab office. Advance booking is essential, please consider using the following local operators: (Inclusion of this number doesn't represent any endorsement of the taxi firm)

Z Cars
0117 950 0600

Bradley Stoke Cars
07506 449 854

1 R Taxis
0117 904 0737

Further information about all onward travel

Local Cycle Info	National Cycle Info	Bus Times	PlusBus
BetterByBike.info Plan your bike journeys, find local cycle routes and much more.	walkwheelcycletrust.org.uk	www.travelwest.info Plan your journey, see bus routes and timetables, fares, travel updates and much more.	plusbus.info PlusBus is a discount price 'bus pass' that you buy with your train ticket. It gives you unlimited bus travel around your chosen town, on participating buses. Visit www.plusbus.info

National Rail Enquiries

Online	NRE App	Social Media	Alert Me	Contact Centre	PlusBike
nationalrail.co.uk	Free National Rail Enquiries app for iOS and Android	facebook.com/nationalrailenq @nationalrailenq	You can sign up to Alert Me messages on the National Rail Enquiries website where you can receive train and platform notifications directly to your smart phone. nationalrail.co.uk/alertme	03457 48 49 50 Calls cost no more than calls to geographic numbers (01 or 02) and may be recorded.	nationalrail.co.uk/plusbike For more information.



National Rail
Britain's train companies working together



This poster shows details of popular destinations and main, frequent bus routes. Additional services may run, so please check with Traveline or see posters at local bus stops. Whilst considerable care has been taken to ensure the information contained on this poster is correct and accurate, National Rail cannot accept responsibility for any loss or inconvenience caused by any errors or omissions, or for loss, damage, injury or inconvenience relating to the cancellation, alteration, delay or diversion of a service. For any feedback, please e-mail comments@onwardtravelposters.com

Scan this code with your mobile for full station information.