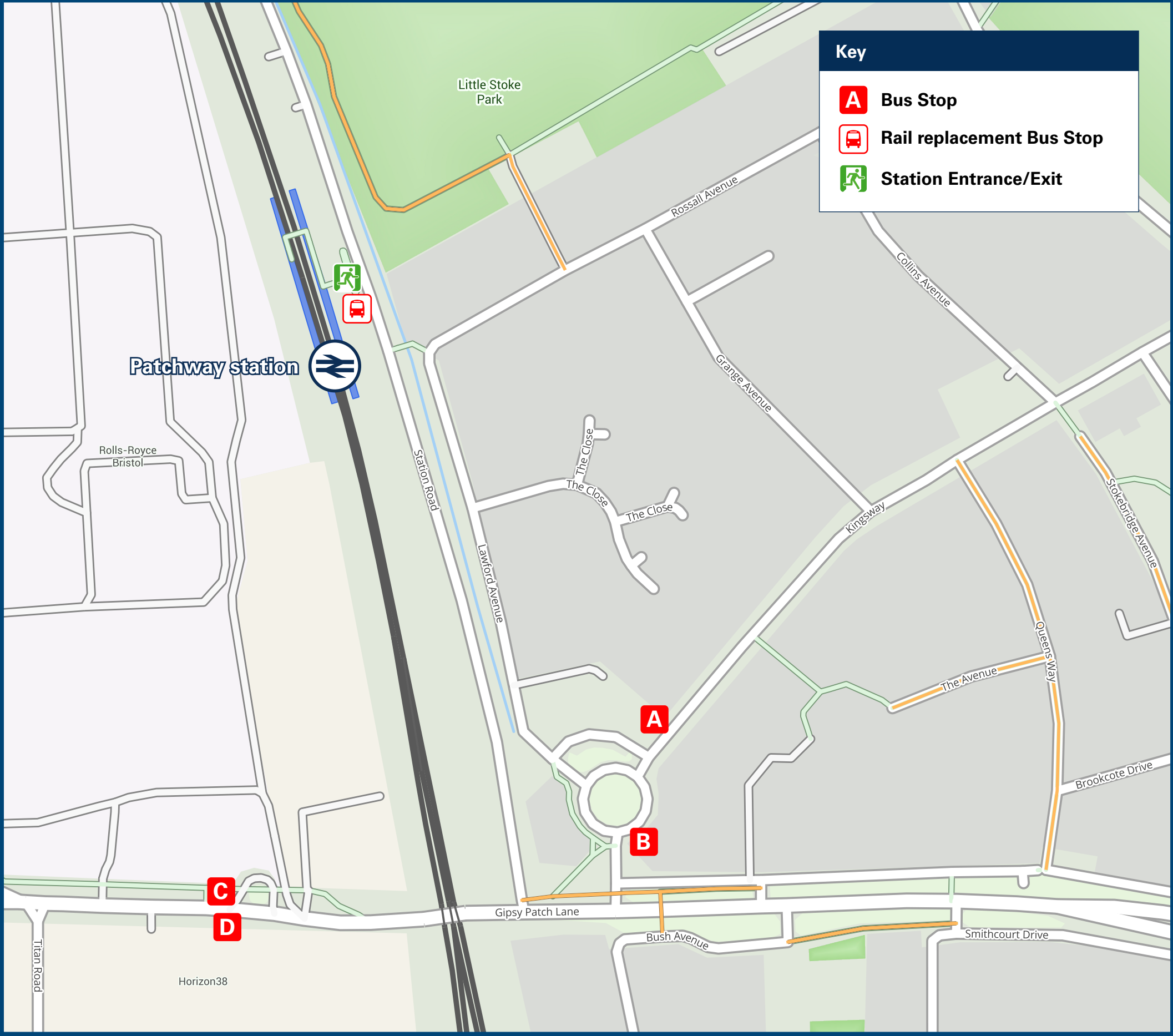




Patchway Station

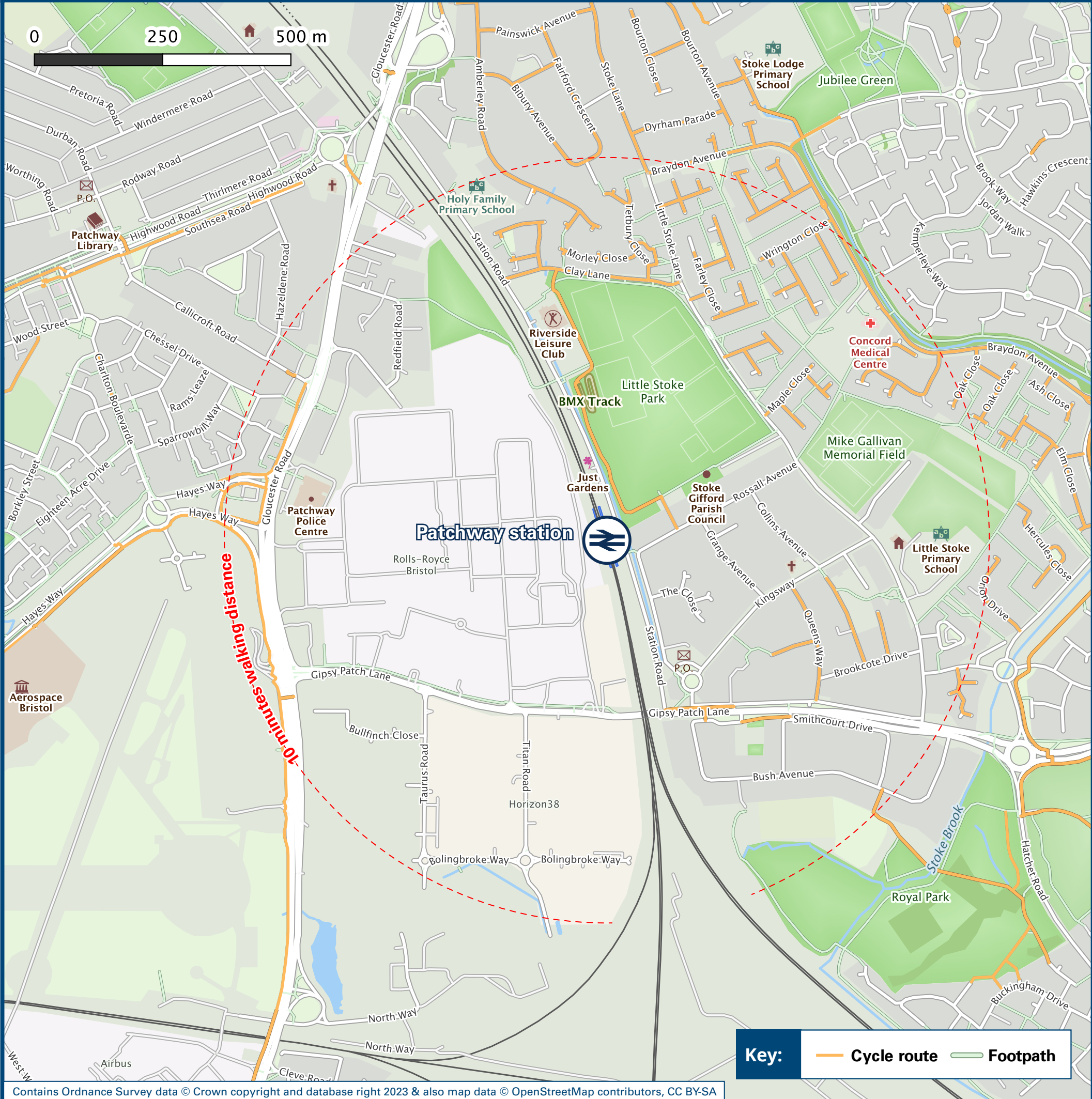
Onward Travel Information

Buses



In the event of engineering work, the bus or coach will collect from the front of the station

Local area map



Main destinations by bus

(Data correct at November 2023)



DESTINATION	BUS ROUTES	BUS STOP
Bristol City Centre	m4	C
Bristol Parkway Station	12	B
Cabot Circus (Bristol)	m4	C
Cribbs Causeway (Bus Station)	m4	D
Cribbs Causeway (Retail Park)	12	A
Cribbs Causeway (The Mall)	12	A
Cribbs Causeway (The Venue - alight at the Retail Park)	12	A

DESTINATION	BUS ROUTES	BUS STOP
Easter Compton	12	A
Frenchay Campus (University of the West of England)	m4	C
Marsh Common	12	A
Patchway (Coniston Road Shops)	12	A
Pilning	12	A
Redwick	12	A
Severn Beach	12	A

DESTINATION	BUS ROUTES	BUS STOP
Stoke Gifford	12	B
Wild Place Project (alight at Easter Compton Golf Club)	m4	C
Notes	12	A

Bus route m4 operates a daily service.
Bus route 12 operates a Mondays to Saturdays service, only. No Sunday service.
Local bus services serving the wider area can be accessed via interchange points at Cribbs Causeway, The Mall and Bristol Parkway Station.
Timetable information is provided at local bus stops indicated on the map above. Alternatively contact Traveline (refer to further information section).
For bus times please see bus stop timetables, or contact travelwest.info
Direct trains operate from this station to this destination.
Change here for connecting National Rail services.

Taxis

Patchway Station has no taxi rank or cab office. Advance booking is essential, please consider using the following local operators: (Inclusion of this number doesn't represent any endorsement of the taxi firm)

Z Cars South Gloucestershire
0117 950 0600

Avon Cars
01454 625 050

LLO Taxis
07812 499 713

Further information about all onward travel

Local Cycle Info	National Cycle Info	Bus Times	NextBuses	PlusBus
Travelwest.info For more information about cycle routes.	sustrans.org.uk Sustrans is the UK's leading sustainable transport charity.	See timetable displays at bus stops. www.traveline.info 0871 200 22 33 calls cost 10p per minute plus your phone company's access charge	Find the bus times for your stop. Search for a bus stop by entering a postcode, street & town or a stop name & town.	plusbus.info A discount price 'bus pass' that you buy with your train ticket. It gives you unlimited bus travel around your chosen town, on participating buses.

National Rail Enquiries

Online	NRE App	Social Media	Alert Me	Contact Centre	PlusBike
nationalrail.co.uk	Free National Rail Enquiries app for iOS and Android	facebook.com/nationalrailenq @nationalrailenq	You can sign up to Alert Me messages on the National Rail Enquiries website where you can receive train and platform notifications directly to your smart phone. nationalrail.co.uk/alertme	03457 48 49 50 Calls cost no more than calls to geographic numbers (01 or 02) and may be recorded.	nationalrail.co.uk/plusbike For more information.



National Rail
Britain's train companies working together



This poster shows details of popular destinations and main, frequent bus routes. Additional services may run, so please check with Traveline or see posters at local bus stops. Whilst considerable care has been taken to ensure the information contained on this poster is correct and accurate, National Rail cannot accept responsibility for any loss or inconvenience caused by any errors or omissions, or for loss, damage, injury or inconvenience relating to the cancellation, alteration, delay or diversion of a service. For any feedback, please e-mail [comments@onwardtravelposters.com](#)

Scan this code with your mobile for full station information.