



Barrow-In-Furness Station

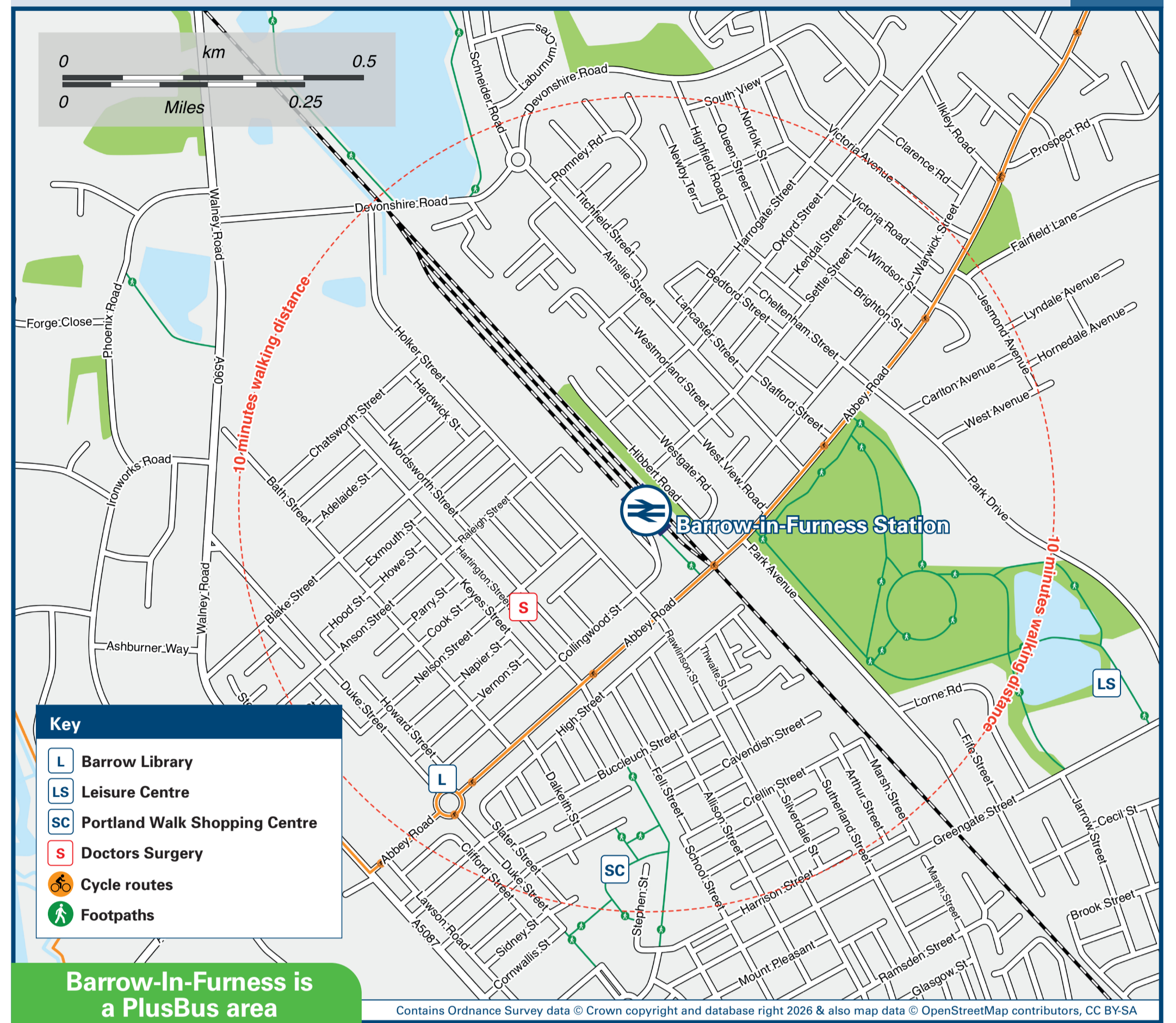
Onward Travel Information

Buses and Taxis



Rail replacement buses will Pick Up / Drop Off at Station Front.

Local area map



Barrow-In-Furness is a PlusBus area



Add PlusBus to your train ticket—now available on eTicket from leading rail ticketing apps—for unlimited bus travel in the PlusBus zone in your destination town or city. Visit www.plusbus.info

Main destinations by bus

(Data correct at February 2026)

DESTINATION	BUS ROUTES	BUS STOP
Backbarrow	6, X6	S
Barrow Island	1	B
Barrow Town Centre (Ramsden Square/ Town Hall)	10 - 15 minutes walk 1, 6, 6A#, X6	B
● Biggar Bank	3	D
● Bowness-on-Windermere	1	B
● Dalton-in-Furness	6	S
● Furness General Hospital	6, 6A#, X6*	S
	1	R

DESTINATION	BUS ROUTES	BUS STOP
Greystone Estate (Dalton-in-Furness)	6, 6A#, X6	S
Haverthwaite	6, X6	S
● Hawcoat	1	R
Lindal	6, 6A#, X6	S
● Newbarns	3	D
Newby Bridge	6, X6	S
● Ormsgill	3	C
● South Walney	1	B
Storrs Hall Hotel	6	S
Swarthmoor	6, 6A#, X6	S

DESTINATION	BUS ROUTES	BUS STOP
Ulverston	6, 6A#, X6	S
● Walney	1	B
Windermere	6	S

Notes

- PlusBus destination, please see below for details. Bus routes 1, 3, 6 and X6 run daily. PlusBus tickets are only valid on Stagecoach Cumbria and North Lancashire and Blueworks services in and around Barrow. For bus times and days of operation please contact Traveline on www.traveline.info or call: 0871 200 22 33
- ⚡ Direct trains operate to this destination from this station
- * To Furness General Hospital the X6 service operates on Sundays, only.
- # Bus route 6A operates Mondays to Saturdays, and an evening service on Sundays.

Taxis

Barrow-in-Furness station is served by a taxi rank or a cab office. Check availability before travelling, and pre-book if necessary. Please consider using the following local operators: (Inclusion of this number doesn't represent any endorsement of the taxi firm)

Acacia Taxis
01229 434 343

Coastal Cars
01229 445 445

Appy Cabs
01229 808 080

Further information about all onward travel

Local Cycle Info sustrans.org.uk <small>For more information about cycle routes.</small>	National Cycle Info walkwheelcycletrust.org.uk	Bus Times <small>See timetable displays at bus stops.</small> www.traveline.info 0871 200 22 33 <small>calls cost 13p per minute plus your phone company's access charge</small>	PlusBus plusbus.info <small>PlusBus is a discount price 'bus pass' that you buy with your train ticket. It gives you unlimited bus travel around your chosen town, on participating buses. Visit www.plusbus.info</small>
--	--	--	--

National Rail Enquiries

Online nationalrail.co.uk	NRE App Free National Rail Enquiries app for iOS and Android	Social Media facebook.com/nationalrailenq @nationalrailenq	Alert Me You can sign up to Alert Me messages on the National Rail Enquiries website where you can receive train and platform notifications directly to your smart phone. nationalrail.co.uk/alertme	Contact Centre 03457 48 49 50 <small>Calls cost no more than calls to geographic numbers (01 or 02) and may be recorded.</small>	PlusBike nationalrail.co.uk/plusbike <small>For more information.</small>
---	--	---	---	--	---



This poster shows details of popular destinations and main, frequent bus routes. Additional services may run, so please check with Traveline or see posters at local bus stops. Whilst considerable care has been taken to ensure the information contained on this poster is correct and accurate, National Rail cannot accept responsibility for any loss or inconvenience caused by any errors or omissions, or for loss, damage, injury or inconvenience relating to the cancellation, alteration, delay or diversion of a service. For any feedback, please e-mail comments@onwardtravelposters.com

Scan this code with your mobile for full station information.