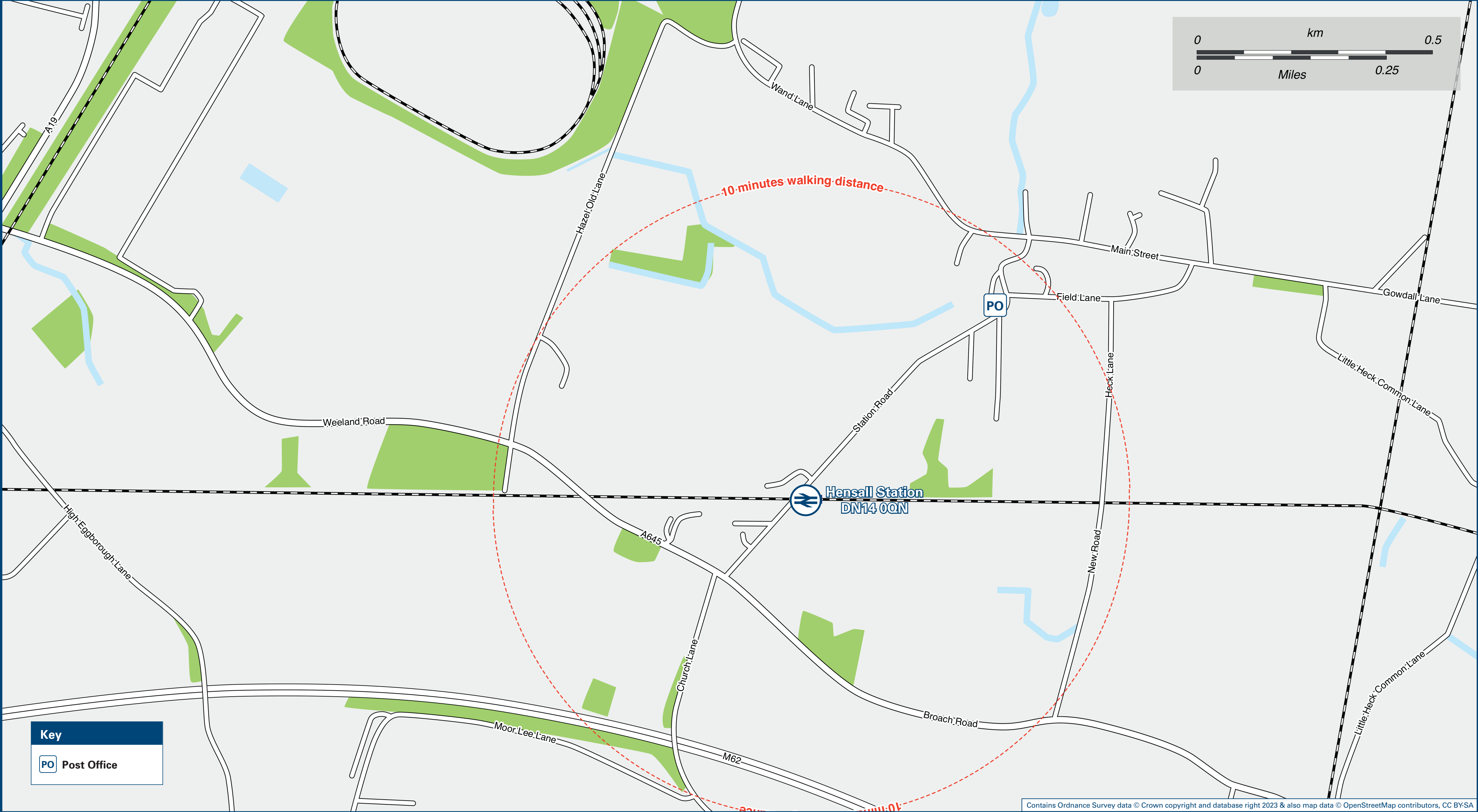




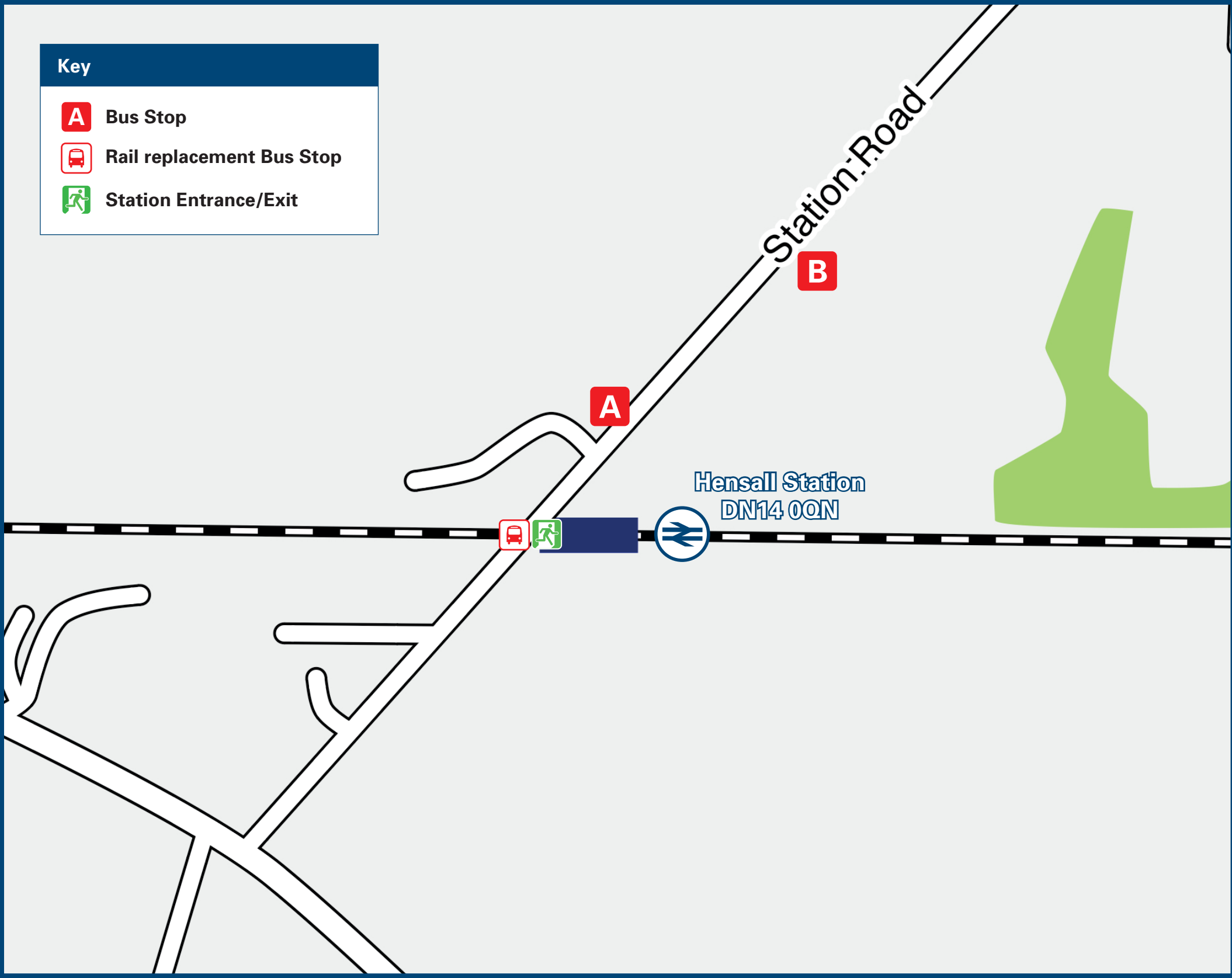
Hensall Station

Onward Travel Information

Local area map



Buses



Rail replacement buses adjacent to the level crossing.

Main destinations by bus

(Data correct at November 2023)

DESTINATION	BUS ROUTES	BUS STOP
Beal	476#	B
Brayton (The Swan)	476+	A
Burn	476+	A
Chapel Haddlesey	476+	A
Eggborough	476#	B
Hensall Village (Main Street)	15 minutes walk from this station (see maps)	
Hut Green (Horse & Jockey)	476#	B
Kellington	476#	B
Selby (Bus Station / Railway Station)	476+	A
Selby College	476+	A
Selby (New War Memorial Hospital)	476+	A
Whitley Bridge	476#	B
Whitley (George & Dragon)	476#	B

Notes

- Direct trains operate to this destination from this station.
- # Bus route 476 operates Monday to Saturday late afternoons/early evenings only to this destination.
- + Bus route 476 operates Monday to Saturday early mornings only to this destination.

Taxis

Hensall station has no taxi rank or cab office. Advance booking is essential, please consider using the following local operators: (Inclusion of this number doesn't represent any endorsement of the taxi firm)

EJ Private Hire
01977 662 769

G's Taxis
07484 758 254

Toadstool Cabs
07973 828 017

Further information about all onward travel

Local Cycle Info

www.northyorks.gov.uk/roads-parking-and-travel/roads-and-pavements/cycle-lanes-and-routes
For more information about cycle routes.

National Cycle Info

sustrans.org.uk
Sustrans is the UK's leading sustainable transport charity.

Bus Times

See timetable displays at bus stops.

www.traveline.info
0871 200 22 33
calls cost 15p per minute plus your phone company's access charge

NextBuses

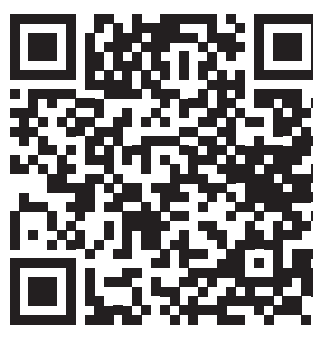
Find the bus times for your stop.
Search for a bus stop by entering a postcode, street & town or a stop name & town.

PlusBus

plusbus.info
A discount price 'bus pass' that you buy with your train ticket. It gives you unlimited bus travel around your chosen town, on participating buses.

National Rail Enquiries

Online nationalrail.co.uk	NRE App Free National Rail Enquiries app for iOS and Android	Social Media facebook.com/nationalrailenq @nationalrailenq	Alert Me You can sign up to Alert Me messages on the National Rail Enquiries website where you can receive train and platform notifications directly to your smart phone. nationalrail.co.uk/alertme	Contact Centre 03457 48 49 50 Calls cost no more than calls to geographic numbers (01 or 02) and may be recorded.	PlusBike nationalrail.co.uk/plusbike For more information.
-----------------------------------------------------------------------------	------------------------------------------------------------------------	-------------------------------------------------------------------------	-------------------------------------------------------------------------------------------------------------------------------------------------------------------------------------------------------------------------------------------------------------------	--------------------------------------------------------------------------------------------------------------------------------	--------------------------------------------------------------------------------------------------------------------------



This poster shows details of popular destinations and main, frequent bus routes. Additional services may run, so please check with Traveline or see posters at local bus stops. Whilst considerable care has been taken to ensure the information contained on this poster is correct and accurate, National Rail cannot accept responsibility for any loss or inconvenience caused by any errors or omissions, or for loss, damage, injury or inconvenience relating to the cancellation, alteration, delay or diversion of a service. For any feedback, please e-mail comments@onwardtravelposters.com

Scan this code with your mobile for full station information.