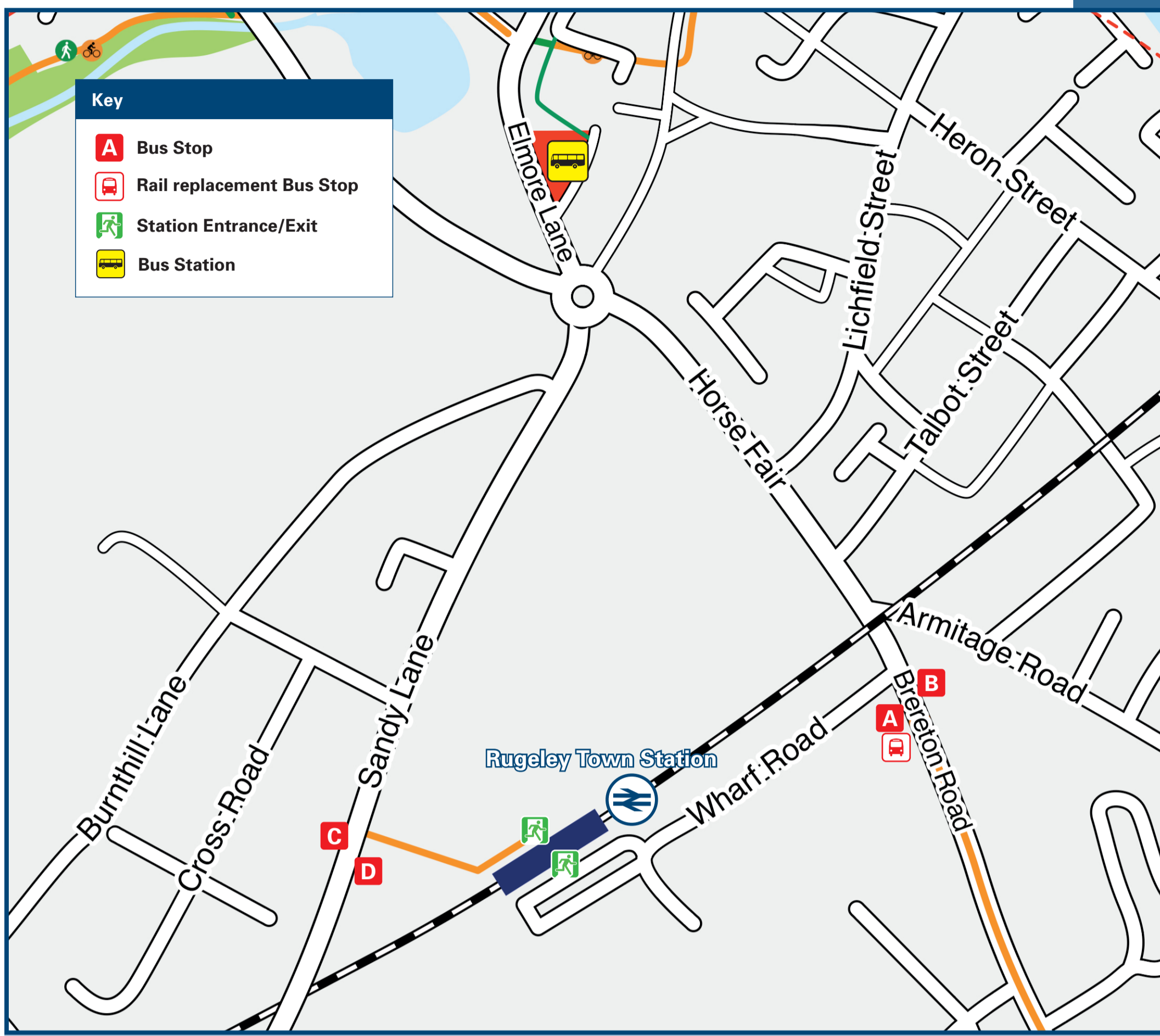




Rugeley Town Station

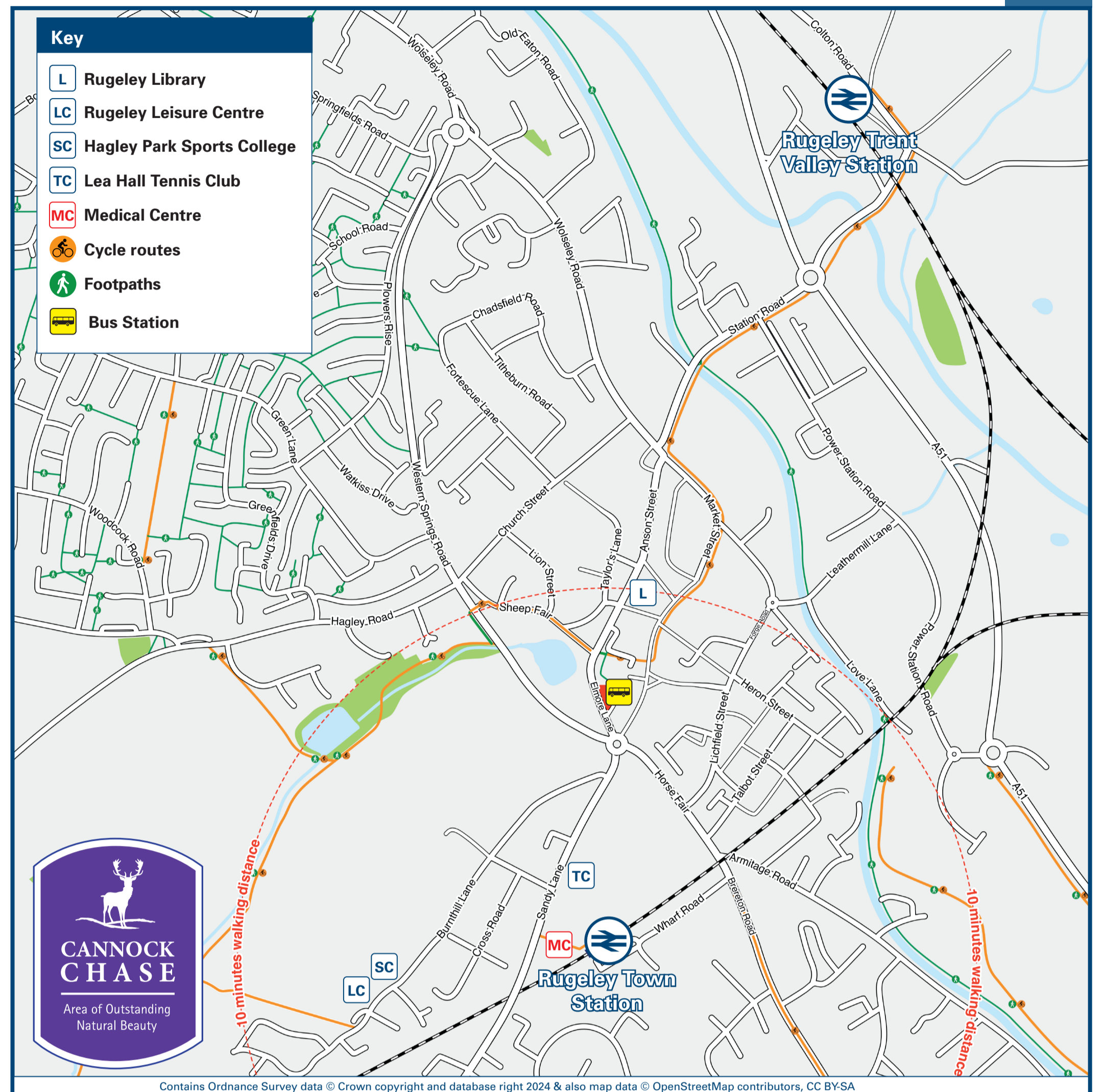
Onward Travel Information

Buses



Rail replacement buses or coaches depart from this station at the end of Wharf Road on Bereton Road - stop {A} and {B} on the Buses map above.

Local area map



Main destinations by bus

(Data correct at July 2024)

DESTINATION	BUS ROUTES	BUS STOP
Abbots Bromley	63	B, C
Armitage	63, 828	B
Baswich	826	Bus Station 2
Bishton	828	A
Brereton (Coalpit Lane)	63, 828	B
	63	C
Brindley Heath (Bradbury Lane)	63	A, D
Cannock	63	A, D
Colwich	828	A
Flaxley Green (for Cannock Chase)	63	A, D
Great Haywood	828	A
Handsacre	63, 828	B
	63	C

DESTINATION	BUS ROUTES	BUS STOP
Hednesford	63	A, D
Hill Ridware	63	B, C
Lichfield	828	B
Little Haywood (Village Centre)	828	A
Milford	826	Bus Station 2
Rugeley (Bus Station / Town Centre)	63, 828	A
	63	C
Rugeley (Pear Tree Estate, Coppice Road)	63*	A, D
Rugeley (Springfields Estate / Etchinghill)	826, 828	Bus Station 2
	828	A
Shugborough Historic Estate	826, 828	Bus Station 2
	828	A
Stafford (County Hospital)	828	A
Stafford (Queensville)	826	Bus Station 2

DESTINATION	BUS ROUTES	BUS STOP
Stafford (Town Centre)	826, 828	Bus Station 2
	828	A
Tixall	828	A
Uttoxeter	63	B, C
Weeping Cross	826	Bus Station 2
Wolsley Bridge	826, 828	Bus Station 2
	828	A

Notes

Bus routes 63, 826 and 828 operate Mondays to Saturdays. No Sunday or Public Holiday services.

For bus times and further information contact Traveline on 0871 200 22 33 or Chaserider Buses (for bus routes 63, 826 & 828) call 01543 758 594.

- Direct trains operate to this destination from this Station
- Direct trains to Lichfield and Stafford depart from Rugeley Trent Valley Station.
- It's a 10 minutes walk from this station to Rugeley town centre and bus station, see maps for walking routes.

* Not all bus route 63 journeys run via the Pear Tree Estate, Coppice Road, check the timetable.

AONB Cannock Chase (AONB) www.cannock-chase.co.uk

Taxis

Rugeley Town station has no taxi rank or cab office. Advance booking is essential, please consider using the following local operators: (Inclusion of this number doesn't represent any endorsement of the taxi firm)

Fifty Fifty
01889 575 050

Chase Cars
01889 584 545

Pat's Cabs
01889 802 499

60 61 Cars
01889 586 061

Further information about all onward travel

Local Cycle Info staffordshire.gov.uk For more information about cycle routes.	National Cycle Info sustrans.org.uk Sustrans is the UK's leading sustainable transport charity.	Bus Times See timetable displays at bus stops. www.traveline.info 0871 200 22 33 call cost 12p per minute plus your phone company's access charge	NextBuses Find the bus times for your stop. Search for a bus stop by entering a postcode, street & town or a stop name & town.	PlusBus plusbus.info A discount price 'bus pass' that you buy with your train ticket. It gives you unlimited bus travel around your chosen town, on participating buses.
---------------------------------------------------------------------------------------------------------------------------------------	---------------------------------------------------------------------------------------------------------------------------------------------------	--------------------------------------------------------------------------------------------------------------------------------------------------------------------------------------------------------------	---------------------------------------------------------------------------------------------------------------------------------------------	-------------------------------------------------------------------------------------------------------------------------------------------------------------------------------------------------------------------------

National Rail Enquiries

Online nationalrail.co.uk	NRE App Free National Rail Enquiries app for iOS and Android	Social Media facebook.com/nationalrailenq @nationalrailenq	Alert Me You can sign up to Alert Me messages on the National Rail Enquiries website where you can receive train and platform notifications directly to your smart phone. nationalrail.co.uk/alertme	Contact Centre 03457 48 49 50 Calls cost no more than calls to geographic numbers (01 or 02) and may be recorded.	PlusBike nationalrail.co.uk/plusbike For more information.
-----------------------------------------------------------------------------	------------------------------------------------------------------------	-------------------------------------------------------------------------	-------------------------------------------------------------------------------------------------------------------------------------------------------------------------------------------------------------------------------------------------------------------	--------------------------------------------------------------------------------------------------------------------------------	--------------------------------------------------------------------------------------------------------------------------



National Rail
Britain's train companies working together

