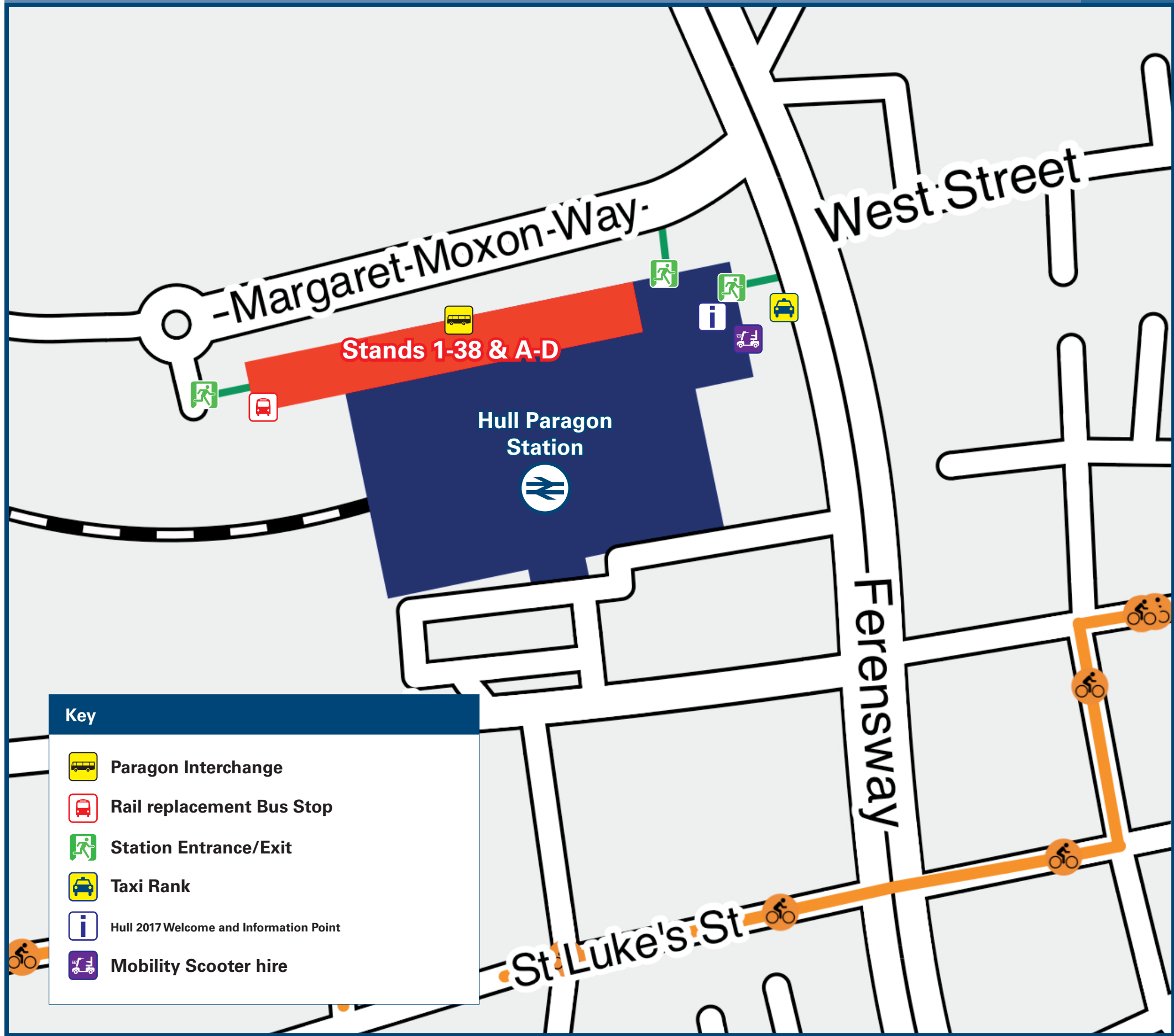




# Hull Paragon Station

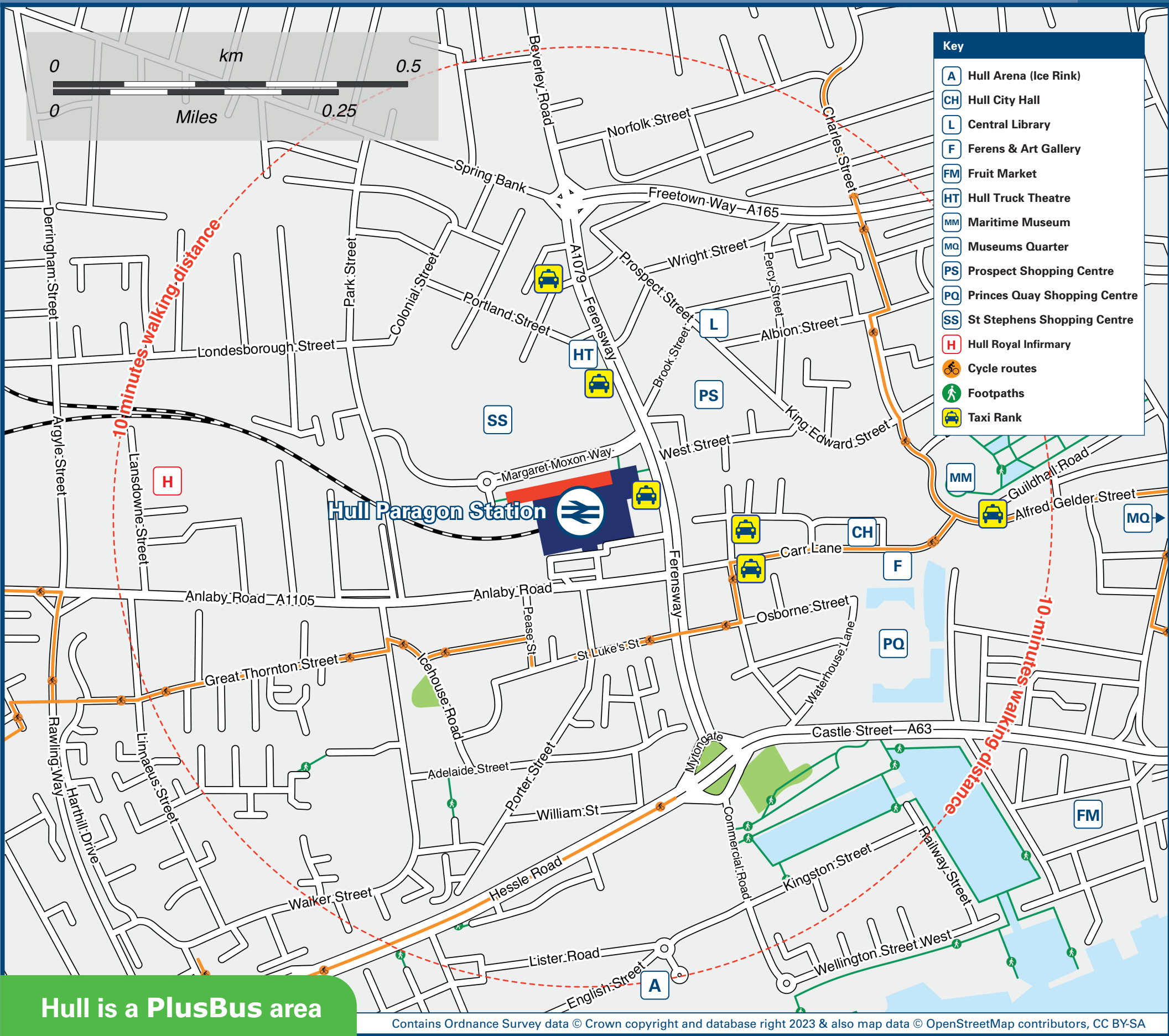
## Onward Travel Information

### Buses, Taxis, Cycles and Mobility Scooters



Rail replacement buses/coaches depart from the Bus Interchange Stands {A} to {D}.

### Local area map



Hull is a PlusBus area



**PlusBus** is a discount price 'bus pass' that you buy with your train ticket. It gives you unlimited bus travel around your chosen town, on participating buses. Visit [www.plusbus.info](http://www.plusbus.info)

### Main destinations by bus

(Data correct at September 2023)



DESTINATION	BUS ROUTES	BUS STOP
● Anlaby	152, 153, 154	11
● Anlaby Park	2, 152, 153, 154, 250, 255*, 350	8, 10, 11
Barton-upon-Humber	250, 255*, 350	10
Beverley	23, 121, X46, X47	22
● Bilton (Main Road / Shannon Road)	24, 56, 57, 277*	30, 31
● Bilton Grange Estate (Wingfield Road)	13, 14, 15	32, 33, 34
● Boothferry Estate	1, 1C, 2, 66, 66B, 250, 255*, 350	4, 5, 8, 9, 10
● Bransholme (North Point Shopping Centre)	7, 8, 11, 12, 16, 33, 255*	2, 21, 26, 27, 28
● Bricknell Avenue Estate	3, 3B, 105	4, 18, 23
● Bridgehead Business Park	55, 66B, 152	9, 11, 12
● Brough	55, 55A	12
Burstwick	75	35
● Castle Hill Hospital	63, 104, 105, 154	11, 12, 17, 23
● Cottingham	63, 104, 105	12, 17, 23
● Craven Park Stadium (Hull Kingston Rovers RLFC)	13	34
● Derringham	54, 56	14
● Dunswell	23, 121	22
Ferriby	55, 153	11, 12
● Fiveways (Boothferry Road)	55, 66, 66B, 250, 255*, 350	9, 10, 12
● Fleet Estate	56, 57, 277*	30, 31
● Garden Village	4, 8, 11, 12, 13, 14, 24, 33, 56, 57	26, 27, 30, 31, 33, 34
● Ghost Estate (Mizzen Road)	4A, 6, 23, 121, X46	19, 18, 20, 22
● Gilberdyke	55	12
● Goole	55	12
● Greatfield	13, 14	33, 34
Grimsby	250	10

Hedon	75, 78*, 79*, 277*, X7	31, 35
● Hessele	55, 57, 66, 250, 255*, 350	6, 9, 10, 12
● HM Prison Hull	75, 78*, 79*, X7	35
Hornsea	24	31
● Hull Royal Infirmary	2, 55, 56, 57, 63, 66, 66B, 152, 153, 154, 250, 255*, 350	6, 8, 9, 10, 11, 12, 14
● Humber Bridge	250, 255*, 350	10
● Ings Road Estate	33	26
● Kingswood	5, 6, 7, 8, 11	16, 20, 21, 27
Kirk Ella (Mill Lane)	153	11
● Longhill Estate	56, 57	30
● Marfleet Village	75, 78*, 79*, X7	35
Market Weighton	X46, X47	22
● MKM Stadium (Hull City AFC & Hull RLFC)	2, 55, 56, 63, 66, 66B, 152, 153, 154, 250, 255, 350	8, 9, 10, 11, 12
● Noddle Hill	12, 33	26
● North Bransholme	2, 6, 7, 10, 255*	7, 8, 20, 21, 25
● North Hull Estate	3, 4, 4A, 5	15, 16, 18
● Orchard Park	3, 4, 4A, 5, 104	15, 16, 17, 18
Pocklington	X46, X47	22
● Preston Road Estate	13	34
Preston Village	277*	31
● Priory Park	20	3
Setting Dyke	63	12
Scunthorpe	350	10
Skirlaugh	24	31
South Ferriby	350	10

DESTINATION	BUS ROUTES	BUS STOP
● Spring Cottage	8, 11	21, 27
Sproatley (for Burton Constable Hall)	277*	31
● Sutton Park	2, 7, 8, 255*	7, 21, 25, 27
● Sutton Village	11, 12, 33	26, 27
Swanland	153	11
Thornthorpe	75, X7	35
● University of Hull	5, 104, 105	16, 17, 23
● Victoria Dock Village	16, 78*, 79*, X7	28, 35
Wawne Village	10	25
● Willerby	54, 154	11, 14
● Wilmington	2, 10	8, 25
Withernsea	75, X7	35
Woodford Leisure Centre	8, 11, 14, 16, 56, 57	6, 21, 27, 28, 30, 33
York	X46, X47	22

#### Notes

- **PlusBus** destination, please see below for details.
- For bus times, days of operation and other bus service information, please see bus stand timetables at this Interchange or enquire at the Travel Centre.
- \* Bus routes 78, 79, 255 & 277 operate limited Mondays to Saturdays journeys only. No Sunday services.
- Direct trains operate to this destination from this Station.
- Direct trains operate to Hessele station, from where it's a 15 to 20 minutes walk to the Humber Bridge Tourist Information Centre.
- From this station, it's a 15 minutes walk to Hull Royal Infirmary and a 20 to 25 minutes walk to the MKM Stadium, see Local area map for walking routes.
- Cycle Hire Cycle Hub: [hullcyclehub.org.uk](http://hullcyclehub.org.uk) or tel: 01482 212 675
- Mobility Scooter hire [www.hull.cyclax-uk.co.uk](http://www.hull.cyclax-uk.co.uk) or tel: 01482 212 832

### Taxis

Hull Paragon is a major station where taxis are usually available on a rank. Advance booking is not normally necessary, unless arriving early in the morning or late at night. Operators who may accept bookings include: (Inclusion of this number doesn't represent any endorsement of the taxi firm)

**Hull Cars**  
01482 828 282

**Drive Taxis**  
01482 505 050

**966 Cars**  
01482 966 966

### Further information about all onward travel

#### Local Cycle Info

[hull.gov.uk](http://hull.gov.uk)

For more information about cycle routes.

#### National Cycle Info

[sustrans.org.uk](http://sustrans.org.uk)

Sustrans is the UK's leading sustainable transport charity.

#### Bus Times

See timetable displays at bus stops.

[www.traveline.info](http://www.traveline.info)  
0871 200 22 33  
calls cost 15p per minute plus your phone company's access charge

#### NextBuses

Find the bus times for your stop. Search for a bus stop by entering a postcode, street & town or a stop name & town.

#### PlusBus

[plusbus.info](http://plusbus.info)

A discount price 'bus pass' that you buy with your train ticket. It gives you unlimited bus travel around your chosen town, on participating buses.

### National Rail Enquiries

#### Online

[nationalrail.co.uk](http://nationalrail.co.uk)

#### NRE App

Free National Rail Enquiries app for iOS and Android

#### Social Media

[facebook.com/nationalrailenq](https://facebook.com/nationalrailenq)  
 @nationalrailenq

#### Alert Me

You can sign up to Alert Me messages on the National Rail Enquiries website where you can receive train and platform notifications directly to your smart phone.  
[nationalrail.co.uk/alertme](http://nationalrail.co.uk/alertme)

#### Contact Centre

03457 48 49 50  
Calls cost no more than calls to geographic numbers (01 or 02) and may be recorded.

#### PlusBike

[nationalrail.co.uk/plusbike](http://nationalrail.co.uk/plusbike)  
For more information.



**National Rail**  
Britain's train companies working together

