



Chippenham Station

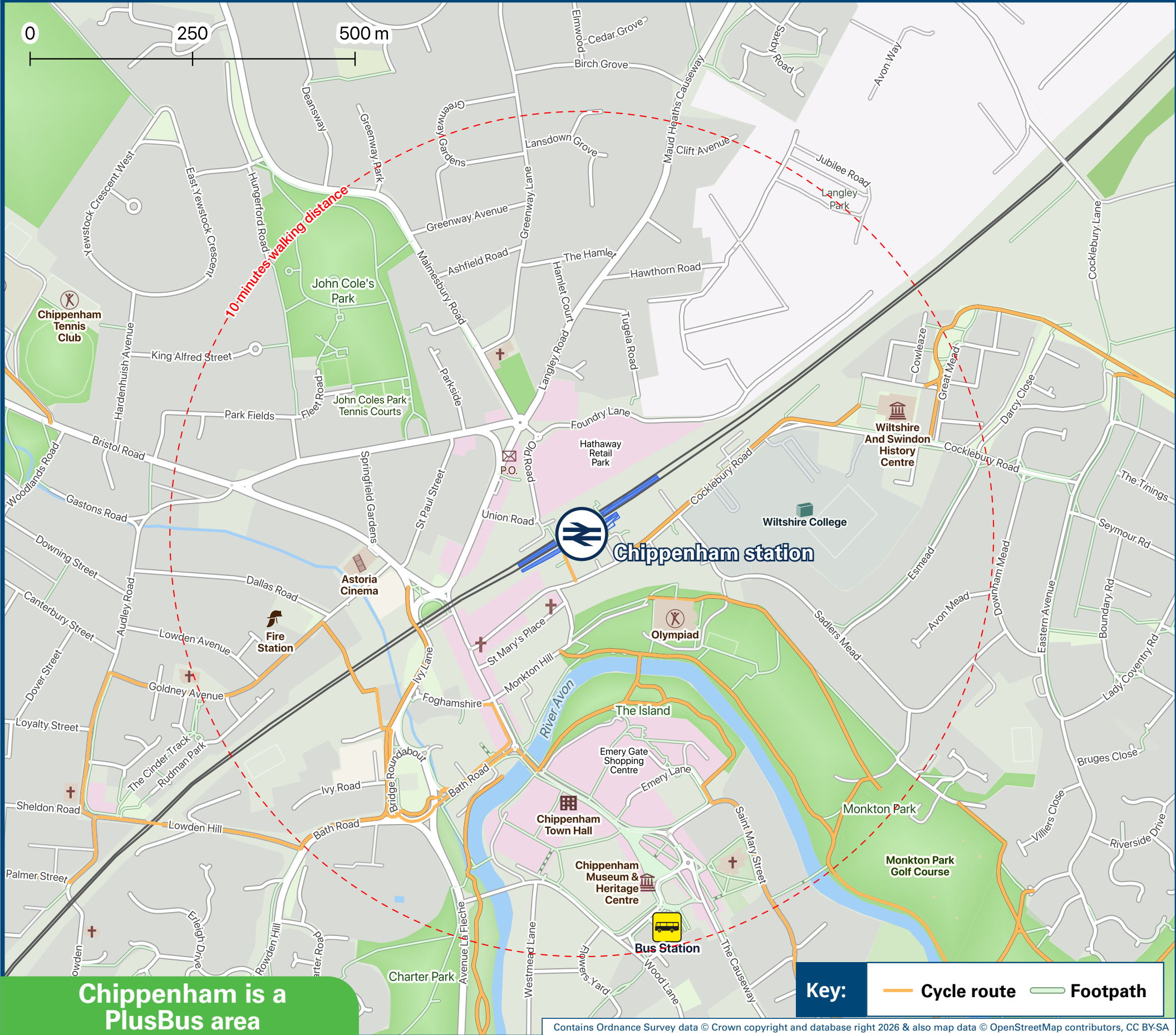
Onward Travel Information

Buses and Taxis



Rail replacement buses from the front of the station, or as directed by signs.

Local area map



Add **PlusBus** to your train ticket—now available on eTicket from leading rail ticketing apps—for unlimited bus travel in the **PlusBus** zone in your destination town or city. Visit www.plusbus.info

Main destinations by bus

(Data correct at January 2026)



DESTINATION	BUS ROUTES	BUS STOP
Ashley	231	A
Batheaston	231	A
Biddestone	95	B
Box	231	A
Brinkworth	99	A
Bromham	33, X33#	A
Burton	95~	B
Calne	33	A
	55	C
Castle Combe Village	95	B
Chippenham Town area -		
• Barrow Green	44B, 44K	D
• Birdmarsh Farm Estate	44K	B
• Brook Street / Woodlands Road	231	A
• Cepen Park North (Morrisons / Malmesbury Road)	99	A
	44K, 91	B
• Cepen Park South (Sainsbury's Bath Road)	231	A
	X34*	A, Bus Station
• Chippenham Community Hospital	X34*	A, Bus Station
	44D	E
• Ladyfield / Southmead	44D	E
• Pewsham (Community Centre, Lodge Road)	44P	Bus Station
• Pewsham (London Road)	33, X33#	A
	55	C
• Pipsmore & Redland	44A	D
• Monkton Park	44M	D
	X34*	A, Bus Station
• Rowden Hill	44D	E

DESTINATION	BUS ROUTES	BUS STOP
• Town Centre (Bus Station)	33, 231, X33#	A
	55	C
Christian Malford	91	B
Corsham	231	A
Corston	99	A
Dauntsey	91	B
Derry Hill	33, X33#	A
Devizes	33, X33#	A
Frome	X34*	A, Bus Station
Great Somerford	91	B
Grittleton	95~	B
Hilmarton	55	C
Hullavington	99	A
	99	A
Kington Langley	44K, 91	B
Kington St Michael	44K	B
Lackham Lodge (for Wiltshire College Lackham campus)	X34*	A, Bus Station
Lacock (for Lacock Abbey & Fox Talbot Museum)	X34*	A, Bus Station
Lea	99	A
	99	A
Little Somerford	91	B
Littleton Drew / The Gibb	95~	B
Lyneham	55	C
Malmesbury	99	A
Melksham	X34*	A, Bus Station
Milbourne	99	A
Rowde	33, X33#	A

DESTINATION	BUS ROUTES	BUS STOP
Royal Wootton Bassett	55	C
	99	A
Rudloe	231	A
Semington	X34*	A, Bus Station
Stanton St Quintin	99	A
Studley	33	A
	55	C
Swindon	55	C
	99	A
Sutton Benger	91	B
Trowbridge	X34*	A, Bus Station
Yatton Keynell	95	B

Notes

- **PlusBus** destination, please see below for details.
- Bus routes 33, 44A, 44B, 44D, 44M, 91, 95 & 95A operate limited daytime Mondays to Saturdays services, only. No Evenings or Sundays service.
- Bus routes 44K and 99 operate services on Mondays to Saturdays, only.
- Bus routes 55 and 231 operate daily services.
- For bus times and days of operation please contact Traveline on www.traveline.info or call: 0871 200 22 33
- Plusbus tickets are valid within the Chippenham Plusbus zone on Faresaver and Stagecoach buses only.
- Direct trains operate from this station to this destination.
- * Bus route X34 operates late afternoons and early evenings only from bus stop {A} from Chippenham railway station to this destination - more bus services operate from Chippenham bus station.
- ** Bus route X34 operates early mornings only from bus stop {A} to Chippenham town centre and bus station.
- # Bus route X33 operates a limited daytime Mondays to Fridays and Sundays service, only. No Evenings or Saturdays service.
- ~ Bus routes 95 and 95A operate Mondays to Fridays only to this destination.

Taxis

Chippenham station is served by a taxi rank or cab office. Check availability, and pre-book if necessary. Please consider using the following local operators: (Inclusion of this number doesn't represent any endorsement of the taxi firm)

Chippenham Taxi
01249 250 250

Veezu
01249 656 565

Rapid Taxi
07747 801 400

Yell Cabs Taxis
01249 304 050

Further information about all onward travel

Local Cycle Info	National Cycle Info	Bus Times	PlusBus
wiltshire.gov.uk For more information about cycle routes.	walkwheelcycletrust.org.uk	See timetable displays at bus stops. www.traveline.info 0871 200 22 33 calls cost 12p per minute plus your phone company's access charge	 plusbus.info PlusBus is a discount price 'bus pass' that you buy with your train ticket. It gives you unlimited bus travel around your chosen town, on participating buses. Visit www.plusbus.info

National Rail Enquiries

Online	NRE App	Social Media	Alert Me	Contact Centre	PlusBike
nationalrail.co.uk	Free National Rail Enquiries app for iOS and Android	facebook.com/nationalrailenq @nationalrailenq	You can sign up to Alert Me messages on the National Rail Enquiries website where you can receive train and platform notifications directly to your smart phone. nationalrail.co.uk/alertme	03457 48 49 50 Calls cost no more than calls to geographic numbers (01 or 02) and may be recorded.	nationalrail.co.uk/plusbike For more information.



National Rail
Britain's train companies working together



This poster shows details of popular destinations and main, frequent bus routes. Additional services may run, so please check with Traveline or see posters at local bus stops. Whilst considerable care has been taken to ensure the information contained on this poster is correct and accurate, National Rail cannot accept responsibility for any loss or inconvenience caused by any errors or omissions, or for loss, damage, injury or inconvenience relating to the cancellation, alteration, delay or diversion of a service. For any feedback, please e-mail comments@onwardtravelposters.com

Scan this code with your mobile for full station information.