



Chippenham Station

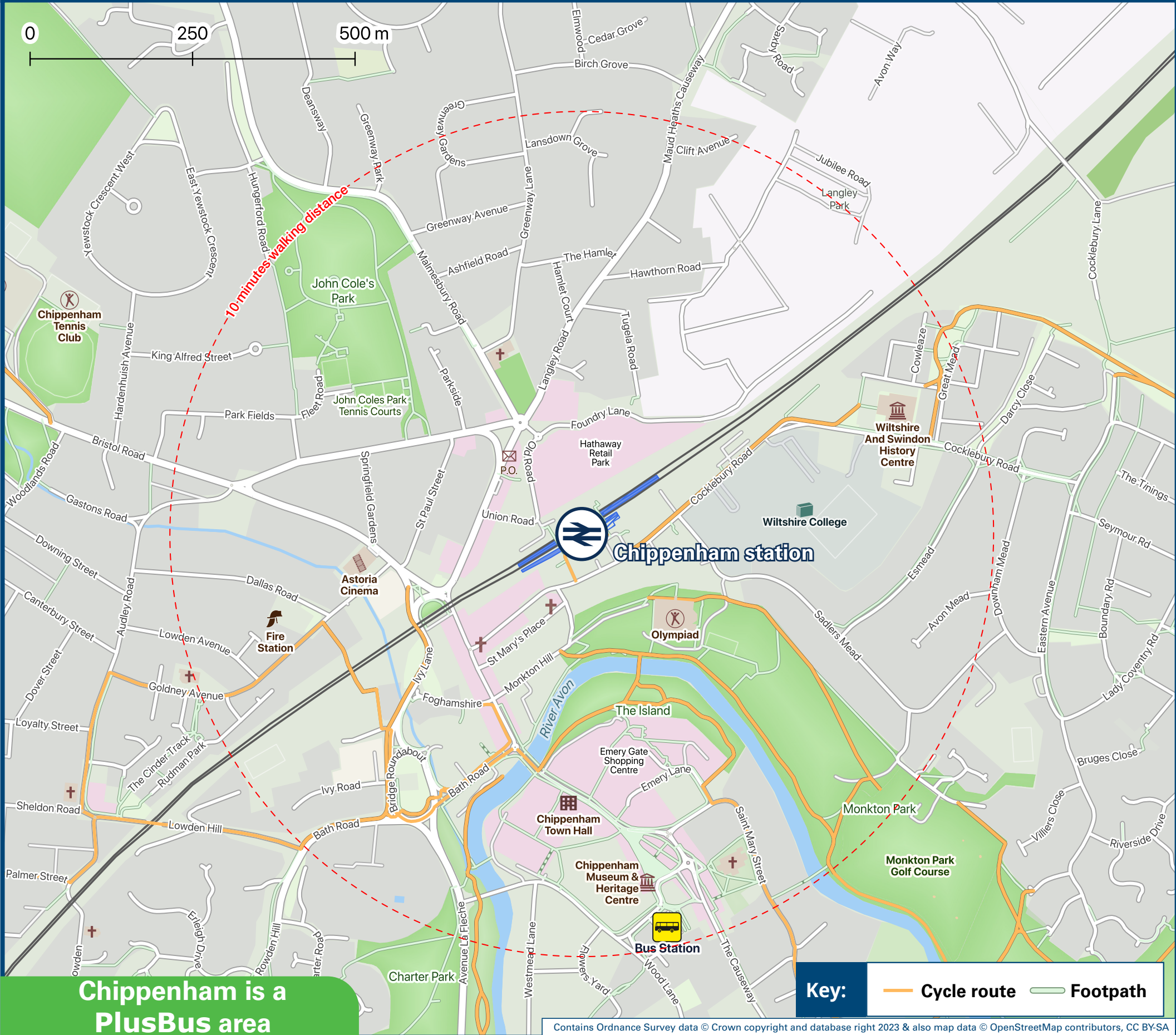
Onward Travel Information

Buses and Taxis



Rail replacement buses from the short stay car park for terminating and starting services, and at the bus stop in the bus-turning area for through services.

Local area map



PlusBus is a discount price 'bus pass' that you buy with your train ticket. It gives you unlimited bus travel around your chosen town, on participating buses. Visit www.plusbus.info

Main destinations by bus

(Data correct at November 2023)



| DESTINATION | BUS ROUTES | BUS STOP |
|---|-------------------|--------------------|
| Ashley | X31 | A |
| Batheaston | X31 | A |
| Biddestone | 95, 95A, 635, 636 | A, D+, Bus Station |
| Box | X31 | A |
| Brinkworth | 99 | A |
| Bromham | 33, X33 | A |
| Burton | 95^, 95A^ | A |
| Calne | 33 | A |
| | 55 | B |
| Castle Combe Village | 95, 95A | A |
| Chippenham Town area - | | |
| • Barrow Green | 44B, 44K | D+ |
| • Birdmarsh Farm Estate | 44K | A |
| • Brook Street / Woodlands Road | X31 | A |
| • Cepin Park North (Morrisons / Malmesbury Road) | 91, 95, 95A, 99 | A |
| • Cepin Park South (Sainsbury's Bath Road) | X31 | A |
| | X34* | A, Bus Station |
| • Ladyfield / Southmead | 44D | C++ |
| • Pewsham (Community Centre, Lodge Road) | 44P | Bus Station |
| • Pewsham (London Road) | 33, X33 | A |
| | 55 | B |
| • Pipsmore & Redland | 95A | A, D+ |
| | 44A | D+ |
| • Monkton Park | 44M | D+ |
| • Rowden Hill (for Chippenham Community Hospital) | X34* | A, Bus Station |
| | 44D | C++ |
| • Town Centre (Bus Station) | 33, X33, X34** | A |
| | 55 | B |
| Christian Malford | 91 | A |
| Coleme | 636 | A, D+, Bus Station |

| DESTINATION | BUS ROUTES | BUS STOP |
|--|-------------|--------------------|
| Corsham | 636 | Bus Station |
| | X31 | A |
| Corston | 99 | A |
| Dauntsey | 91 | A |
| Derry Hill | 33, X33 | A |
| Devizes | 33, X33 | A |
| Ford | 635, 636 | A, D+, Bus Station |
| Frome | X34* | A, Bus Station |
| Great Somerford | 91 | A |
| Grittleton | 95^, 95A^ | A |
| Hilmarton | 55 | B |
| Hullavington | 99 | A |
| Kington Langley | 44K, 91, 99 | A |
| Kington St Michael | 44K | A |
| Lackham Lodge (for Wiltshire College Lackham campus) | X34* | A, Bus Station |
| Lacock (for Lacock Abbey & Fox Talbot Museum) | X34* | A, Bus Station |
| Lea | 99 | A |
| Little Somerford | 91, 99 | A |
| Littleton Drew / The Gibb | 95^, 95A^ | A |
| Lynham | 55 | B |
| Malmesbury | 99 | A |
| Marshfield | 635, 636 | A, D+, Bus Station |
| Melksham | X34* | A, Bus Station |
| Milbourne | 99 | A |
| North Wraxall | 635, 636 | A, D+, Bus Station |
| Rowde | 33, X33 | A |
| | 55 | B |
| Royal Wootton Bassett | 99 | A |
| Rudloe | X31 | A |

| DESTINATION | BUS ROUTES | BUS STOP |
|--------------------|------------|--------------------|
| Semington | X34* | A, Bus Station |
| Stanton St Quintin | 99 | A |
| Studley | 33, X33 | A |
| | 55 | B |
| Swindon | 55 | B |
| | 99 | A |
| Sutton Benger | 91 | A |
| Trowbridge | X34* | A, B, S |
| Upper Wraxall | 635, 636 | A, D+, Bus Station |
| Yatton Keynell | 95, 95A | A |

Notes

- **PlusBus** destination, please see below for details.
- PlusBus** tickets are valid within the Chippenham **PlusBus** zone on Faresaver and Stagecoach buses only.
- Bus routes 33, 44A, 44B, 44D, 44K, 44M, 44P, 91, 95, 95A, 99 and X34 operate Mondays to Saturdays.
- Bus routes 635, 636 and X33 operate Mondays to Fridays only.
- Bus routes 55 and X31 operate daily.
- For bus times and the latest bus service information, please contact Traveline on 0871 200 22 33.
- * Bus route X34 operates late afternoons and early evenings only from bus stop **A** at this station to this destination - all buses operate from the bus station.
- ** Bus route X34 operates early mornings only from bus stop **A** at this station to Chippenham town centre and bus station.
- ^ Bus routes 95 and 95A operate Mondays to Fridays only to this destination.
- + Town Bridge Mill bus stop **D** outside Citadel Hall on the Bath Road.
- ++ Town Bridge bus stop **C** outside Rivo Lounge Café.
- Direct trains operate from this station to this destination.

Taxis

Chippenham station is served by a taxi rank or cab office. Check availability, and pre-book if necessary. Please consider using the following local operators: (Inclusion of this number doesn't represent any endorsement of the taxi firm)

GM Taxis
01249 796 878

Swift Taxis
01249 276 276

V Cars
01249 656 565

Yell Cabs Taxis
01249 304 050

Further information about all onward travel

Local Cycle Info

wiltshire.gov.uk

For more information about cycle routes.

National Cycle Info

sustrans.org.uk

Sustrans is the UK's leading sustainable transport charity.

Bus Times

See timetable displays at bus stops.



www.traveline.info
0871 200 22 33

calls cost 15p per minute plus your phone company's access charge

NextBuses

Find the bus times for your stop.

Search for a bus stop by entering a postcode, street & town or a stop name & town.

nationalrail.co.uk/alertme

PlusBus

plusbus.info

A discount price 'bus pass' that you buy with your train ticket. It gives you unlimited bus travel around your chosen town, on participating buses.

National Rail Enquiries

Online

nationalrail.co.uk

NRE App

Free National Rail Enquiries app for iOS and Android

Social Media

facebook.com/nationalrailenq
@nationalrailenq

Alert Me

You can sign up to Alert Me messages on the National Rail Enquiries website where you can receive train and platform notifications directly to your smart phone.
nationalrail.co.uk/alertme

Contact Centre

03457 48 49 50

Calls cost no more than calls to geographic numbers (01 or 02) and may be recorded.

PlusBike

nationalrail.co.uk/plusbike

For more information.

GWR | Great Western Railway



National Rail
Britain's train companies working together



This poster shows details of popular destinations and main, frequent bus routes. Additional services may run, so please check with Traveline or see posters at local bus stops. Whilst considerable care has been taken to ensure the information contained on this poster is correct and accurate, National Rail cannot accept responsibility for any loss or inconvenience caused by any errors or omissions, or for loss, damage, injury or inconvenience relating to the cancellation, alteration, delay or diversion of a service. For any feedback, please e-mail comments@onwardtravelposters.com

Scan this code with your mobile for full station information.