



Pokesdown Station

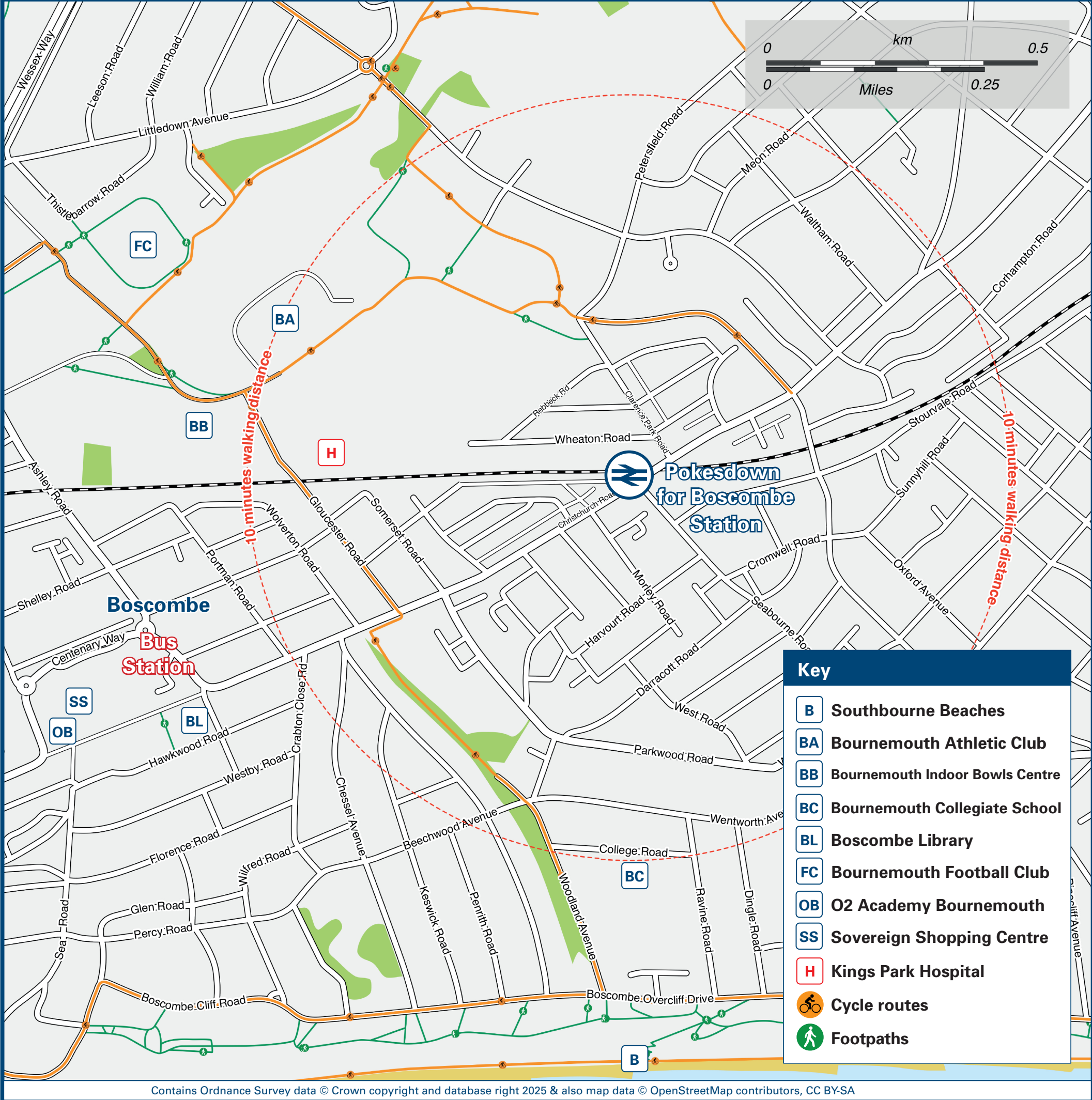
Onward Travel Information

Buses and Cycle Hire



Rail replacement buses/coaches depart from the bus stop by The Bell Inn on the Christchurch Road (A35) towards Bournemouth; from the bus stop lay-by outside the station entrance on Christchurch Road (A35) towards Christchurch.

Local area map



Main destinations by bus

(Data correct at December 2025)



DESTINATION	BUS ROUTES	BUS STOP
AFC Bournemouth (Dean Court / Vitality Stadium)	Approximately 20 minutes walk (see map) 22	B
Boscombe (Bus Station)	33# 1a, 1b, 1c, 22, m2, U3~	A B
Boscombe Pier	30 minutes walk from this station or 20 minutes walk from Boscombe Bus Station	
Bournemouth (Rail, Bus & Coach Station)	22	B
Bournemouth (Town Centre)*	33# 1a, 1b, 1c, 22, m2	A B
Burton	1b	C
Castlepoint Shopping Park	22	A
Charminster (Alma Road / Richmond Park Road)	U3~	B
Christchurch (Town Centre)**	1a 1b, 1c, 33#	A C

DESTINATION	BUS ROUTES	BUS STOP
Hengistbury Head (bus to Southbourne (Harbour Road) - then 10-15 minutes walk)	33#	C
Iford	1a, 22, 33#	A
Lansdowne (for College & University Campus)	1a, 1b, 1c, 22, m2	B
Littledown (Castle Lane East)	22, 33	A
Littledown (Littledown Avenue)	33#	A
Parkstone	m2	B
Poole	m2	B
Purewell	1a 1b, 1c	A C
Royal Bournemouth General Hospital	22, 33#	A
Somerford	1a, 1c	A
Southbourne (Centre / Fishermans Walk / Shops)	1b, 1c, 33#, m2, U3~	C
Talbot Village	U3~	B

DESTINATION	BUS ROUTES	BUS STOP
Tuckton Bridge	1b, 1c, 33#	C
University (Talbot Campus)	U3~	B
Westbourne	m2	B
Winton (Alma Road / Richmond Park Road)	U3~	B

Notes

For bus times and days of operation please contact Traveline on www.traveline.info or call: 0871 200 22 33

Direct trains operate to this destination from this Station

* Bournemouth Town Centre (The Square) for Shops, Gardens, Pier & Seafront.

** Christchurch Town Centre is closed on Mondays for Market Day. Buses stop in Bargates, Fountain Way and Barrack Road.

~ Bus route U3 runs on Mondays to Saturdays, but evening buses do not run during University holiday periods.

Taxis

Pokesdown Station has no taxi rank or cab office. Advance booking is essential, please consider using the following local operators: (Inclusion of this number doesn't represent any endorsement of the taxi firm)

United Taxis
01202 556 677

PRC Streamline
01202 373 737

Further information about all onward travel

Local Cycle Info

bcpcouncil.gov.uk

For more information on cycle routes and local bikeshare scheme.

National Cycle Info

walkwheelcycletrust.org.uk

Bus Times

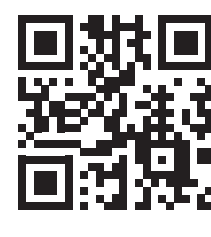
See timetable displays at bus stops.

www.traveline.info
0871 200 22 33
calls cost 15p per minute plus your phone company's access charge

PlusBus

plusbus.info

PlusBus is a discount price 'bus pass' that you buy with your train ticket. It gives you unlimited bus travel around your chosen town, on participating buses. Visit www.plusbus.info



National Rail Enquiries

Online	NRE App	Social Media	Alert Me	Contact Centre	PlusBike
nationalrail.co.uk	Free National Rail Enquiries app for iOS and Android	facebook.com/nationalrailenq @nationalrailenq	You can sign up to Alert Me messages on the National Rail Enquiries website where you can receive train and platform notifications directly to your smart phone. nationalrail.co.uk/alertme	03457 48 49 50 Calls cost no more than calls to geographic numbers (01 or 02) and may be recorded.	nationalrail.co.uk/plusbike For more information.

South Western
Railway



National Rail
Britain's train companies working together

