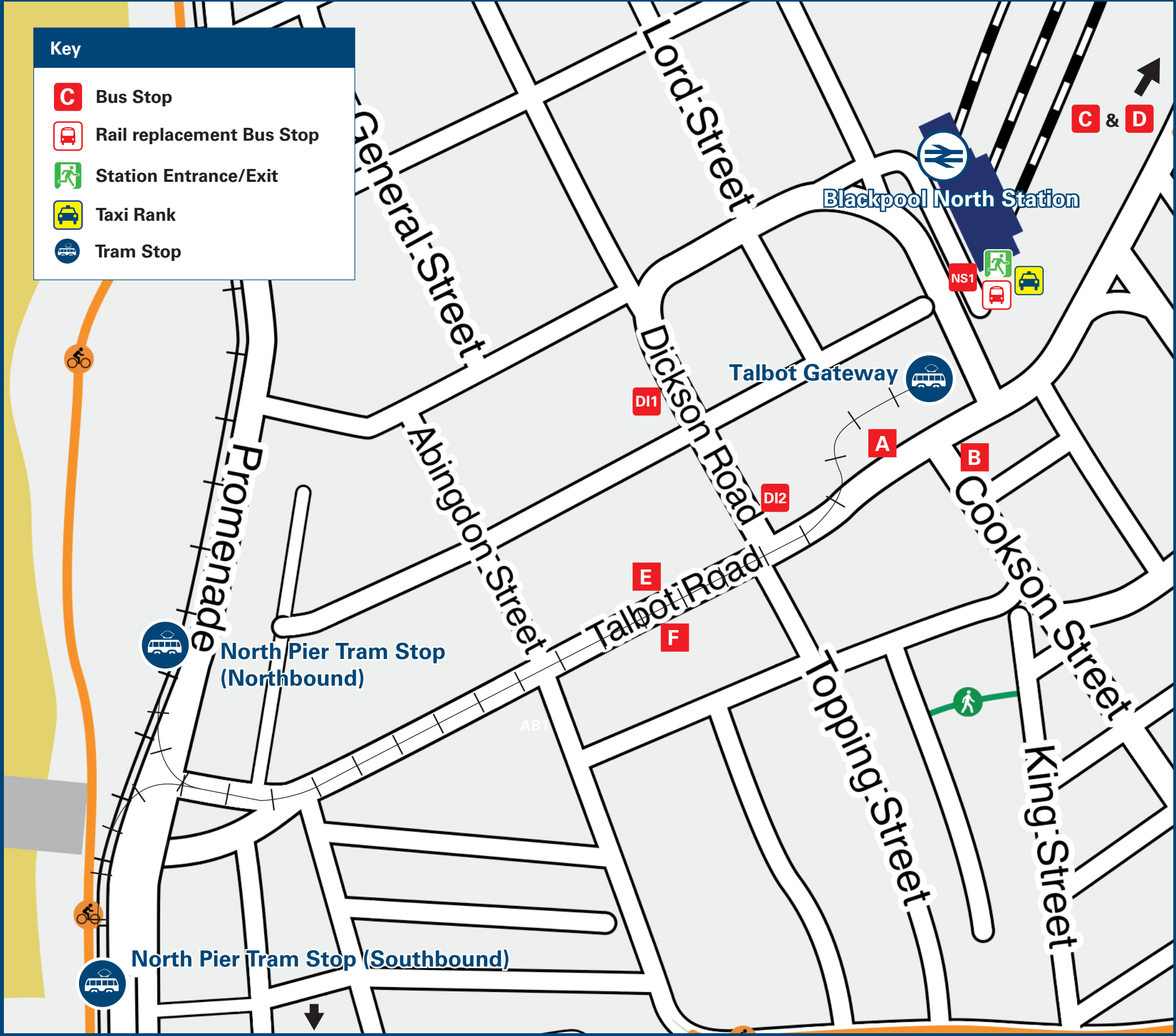




# Blackpool North Station

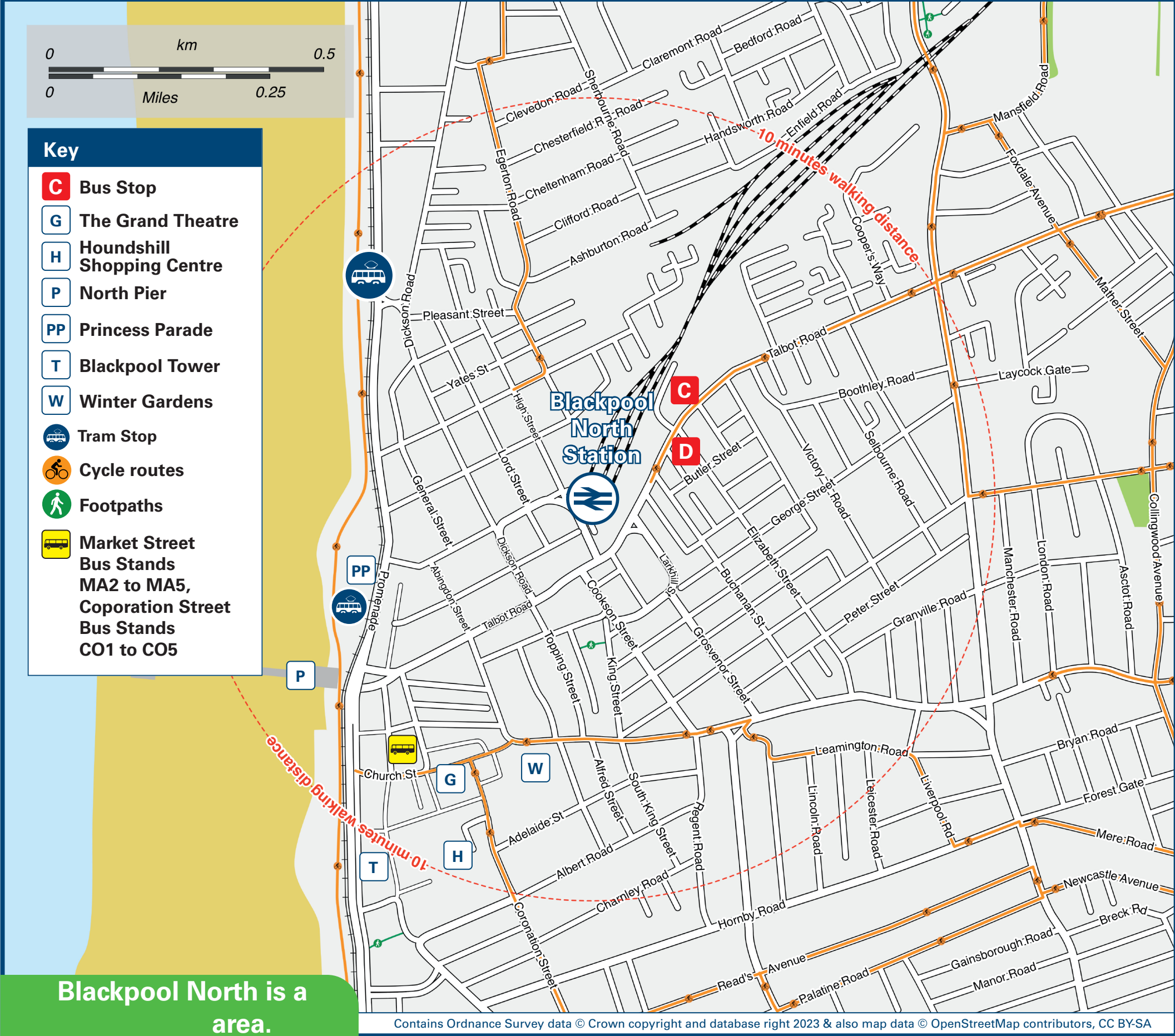
## Onward Travel Information

### Buses, Trams and Taxis



Rail Replacement transport will pick up/drop off at the station entrance.

### Local area map



**PlusBus** is a discount price 'bus pass' that you buy with your train ticket. It gives you unlimited bus travel around your chosen town, on participating buses. Visit [www.plusbus.info](http://www.plusbus.info)

### Main destinations by bus and tram



DESTINATION	BUS/TRAM ROUTES	BUS/TRAM STOP
● Anchorsholme	Tram 3, 3A 7 7A	<b>T</b> <b>N</b> <b>S</b> <b>D</b> 1 <b>A</b> , <b>C</b> # <b>A</b> , <b>C</b> #, <b>E</b>
● Bispham (Post Office)	7	<b>A</b> , <b>C</b> #
● Bispham (Village)	12 3, 3A 7A	<b>A</b> <b>D</b> 1 <b>A</b> , <b>C</b> #, <b>E</b>
● Bispham (Seafront / Queens Promenade)	Tram 1 3A	<b>T</b> <b>N</b> <b>S</b> <b>D</b> 1 <b>A</b> , <b>C</b> #
● Blackpool Airport (Squires Gate)	11, 11A 18 68	<b>T</b> <b>N</b> <b>S</b> <b>D</b> 1 <b>A</b> , <b>C</b> #, <b>E</b>
● Blackpool Central Pier	Tram	<b>T</b> <b>N</b> <b>S</b>
● Blackpool FC (Bloomfield Road)	5, 5A, 5B 11A	<b>D</b> #, <b>F</b> <b>A</b> , <b>C</b> #
● Blackpool North Pier (for Seafront & Tram Stops)	Tram 1 10 minutes walk or taxi from this station	<b>T</b> <b>N</b> <b>S</b> <b>D</b> 1 <b>A</b> , <b>C</b> #, <b>E</b>
● Blackpool & The Fylde College (Bispham)	3 7A	<b>D</b> 1 <b>A</b> , <b>C</b> #, <b>E</b>
● Blackpool Tower	Tram 10 minutes walk or taxi from this station	<b>T</b> <b>N</b> <b>S</b>
● Blackpool Zoo	12 5B	<b>A</b> <b>C</b> #, <b>E</b>
● Carleton	12	<b>A</b>
● Cleveleys	14, 42 Tram 1 7 7A 24 3, 3A	<b>T</b> <b>N</b> <b>S</b> <b>D</b> 1 <b>A</b> , <b>C</b> # <b>A</b> , <b>C</b> #, <b>E</b> <b>B</b>
● Fleetwood	Tram 1 14 24	<b>T</b> <b>N</b> <b>S</b> <b>D</b> 1 <b>A</b> , <b>C</b> # <b>B</b>

DESTINATION	BUS/TRAM ROUTES	BUS/TRAM STOP
● Grange Park	6	<b>A</b>
● Great Eccleston	42	<b>A</b> , <b>C</b> #
● Halfway House	5 5A, 5B 11A	<b>S</b> , <b>D</b> #, <b>F</b> <b>D</b> #, <b>F</b> <b>A</b> , <b>C</b> #
● Layton Square	6, 7A, 14, 42, 61, 76 5, 5A, 5B, 7A, 14, 42, 76 76*	<b>A</b> <b>A</b> , <b>C</b> # <b>A</b> , <b>C</b> #
● Lytham	11, 11A 11B 68	<b>A</b> , <b>C</b> # <b>A</b> , <b>C</b> # <b>A</b> , <b>C</b> #
● Marton	3, 3A 6 12, 61 18	<b>D</b> 1, 2 <b>B</b> <b>A</b> <b>E</b>
● Marton Mere Holiday Village (Preston New Road)	61	<b>A</b>
● Mereside	3, 3A 6 18	<b>D</b> 1, 2 <b>B</b> <b>E</b>
● Norbreck	Tram 1 3A 7	<b>T</b> <b>N</b> <b>S</b> <b>D</b> 1 <b>A</b> , <b>C</b> #
● Normoss	5, 5A 24	<b>C</b> #, <b>E</b> <b>B</b>
● Peel Park	6	<b>B</b>
● Poulton-le-Fylde	12, 42, 76 5, 76 24	<b>A</b> <b>C</b> #, <b>E</b> <b>B</b>
● Saltcotes	11B 68	<b>A</b> , <b>C</b> # <b>A</b> , <b>C</b> #
● South Shore (Blackpool Pleasure Beach)	Tram 18 5	<b>T</b> <b>N</b> <b>S</b> <b>D</b> 1 <b>A</b> , <b>C</b> #, <b>F</b>
● South Shore (Waterloo Hotel)	5A, 5B 11, 11A 18 6	<b>D</b> #, <b>F</b> <b>A</b> , <b>C</b> # <b>E</b> <b>B</b>
● Spen Corner	11B	<b>A</b> , <b>C</b> #
● Staining	5A 76	<b>C</b> #, <b>E</b> <b>A</b> , <b>C</b> #
● St Anne's-on-Sea	11, 11A 11B 68	<b>A</b> , <b>C</b> # <b>A</b> , <b>C</b> # <b>A</b> , <b>C</b> #

DESTINATION	BUS/TRAM ROUTES	BUS/TRAM STOP
● Stanley Park (Main Gates)	18	<b>E</b>
● Stanley Park (Whitegate Road)	3A 61	<b>D</b> 1, 2 <b>A</b>
● Starr Gate	Tram 11, 11A 18 68	<b>T</b> <b>N</b> <b>S</b> <b>D</b> 1 <b>A</b> , <b>C</b> #
● Thornton	14 24	<b>A</b> , <b>C</b> # <b>B</b>
● Victoria Hospital	12, 76 5, 5A, 5B, 5C, 76	<b>A</b> <b>C</b> #, <b>E</b>
● Wrea Green	18 24 61 76	<b>E</b> <b>B</b> <b>A</b> <b>A</b> , <b>C</b> #

#### Notes

Bus routes 1, 3, 3A, 5, 5B, 6, 7, 7A, 11, 11A, 11B, 14, 18, 24, 42, 61 & 68 operate daily.

Bus routes 5A, 12 & 76 operate on Mondays to Saturdays only.

PLUSBUS tickets are only valid within the Blackpool Plusbus zone on Blackpool Transport (Buses) and Stagecoach (Buses) and Blackpool Transport (Trams) between Starr Gate and Cleveleys (Thornton Gate).

PLUSBUS tickets are NOT valid on bus routes 21 or 76 on this poster.

➡ Direct trains operate to this destination from this station.

# See Local area map for location of bus stops {C} and {D} and bus stops {MA2}, {MA3}, {MA4} and {MA5} on Market Street.

+ Trams to this destination depart from the North Pier Northbound Tram Stop and from the Talbot Gateway Tram Stop (opposite this station) when open, see maps.

++ Trams to this destination depart from the North Pier Southbound Tram Stop and from the Talbot Gateway Tram Stop (opposite this station) when open, see maps.

● **PLUSBUS** destination, please see below for details.

### Taxis

Blackpool North is a major Station where taxis are usually available on a rank. Advance booking is not normally necessary, unless arriving early in the morning or late at night. Operators who may accept bookings include: (Inclusion of this number doesn't represent any endorsement of the taxi firm)

**Premier Taxis**  
01253 407 170

**C Cabs**  
01253 29 29 29

**Blackpool 24/7 Taxis**  
01253 777 222

### Further information about all onward travel

#### Local Cycle Info

[blackpool.gov.uk](http://blackpool.gov.uk)  
For more information about cycle routes.

#### National Cycle Info

[sustrans.org.uk](http://sustrans.org.uk)  
Sustrans is the UK's leading sustainable transport charity.

#### Bus Times

See timetable displays at bus stops.

[www.traveline.info](http://www.traveline.info)  
0871 200 22 33  
calls cost 15p per minute plus your phone company's access charge

#### NextBuses

Find the bus times for your stop.  
Search for a bus stop by entering a postcode, street & town or a stop name & town.

#### PlusBus

[plusbus.info](http://plusbus.info)  
A discount price 'bus pass' that you buy with your train ticket. It gives you unlimited bus travel around your chosen town, on participating buses.

### National Rail Enquiries

**Online**  
[nationalrail.co.uk](http://nationalrail.co.uk)

**NRE App**  
Free National Rail Enquiries app for iOS and Android

**Social Media**  
facebook.com/nationalrailenq  
@nationalrailenq

#### Alert Me

You can sign up to Alert Me messages on the National Rail Enquiries website where you can receive train and platform notifications directly to your smart phone.  
[nationalrail.co.uk/alertme](http://nationalrail.co.uk/alertme)

#### Contact Centre

03457 48 49 50  
Calls cost no more than calls to geographic numbers (01 or 02) and may be recorded.

#### PlusBike

[nationalrail.co.uk/plusbike](http://nationalrail.co.uk/plusbike)  
For more information.



**National Rail**  
Britain's train companies working together



This poster shows details of popular destinations and main, frequent bus routes. Additional services may run, so please check with Traveline or see posters at local bus stops. Whilst considerable care has been taken to ensure the information contained on this poster is correct and accurate, National Rail cannot accept responsibility for any loss or inconvenience caused by any errors or omissions, or for loss, damage, injury or inconvenience relating to the cancellation, alteration, delay or diversion of a service. For any feedback, please e-mail [comments@onwardtravelposters.com](mailto:comments@onwardtravelposters.com)

Scan this code with your mobile for full station information.