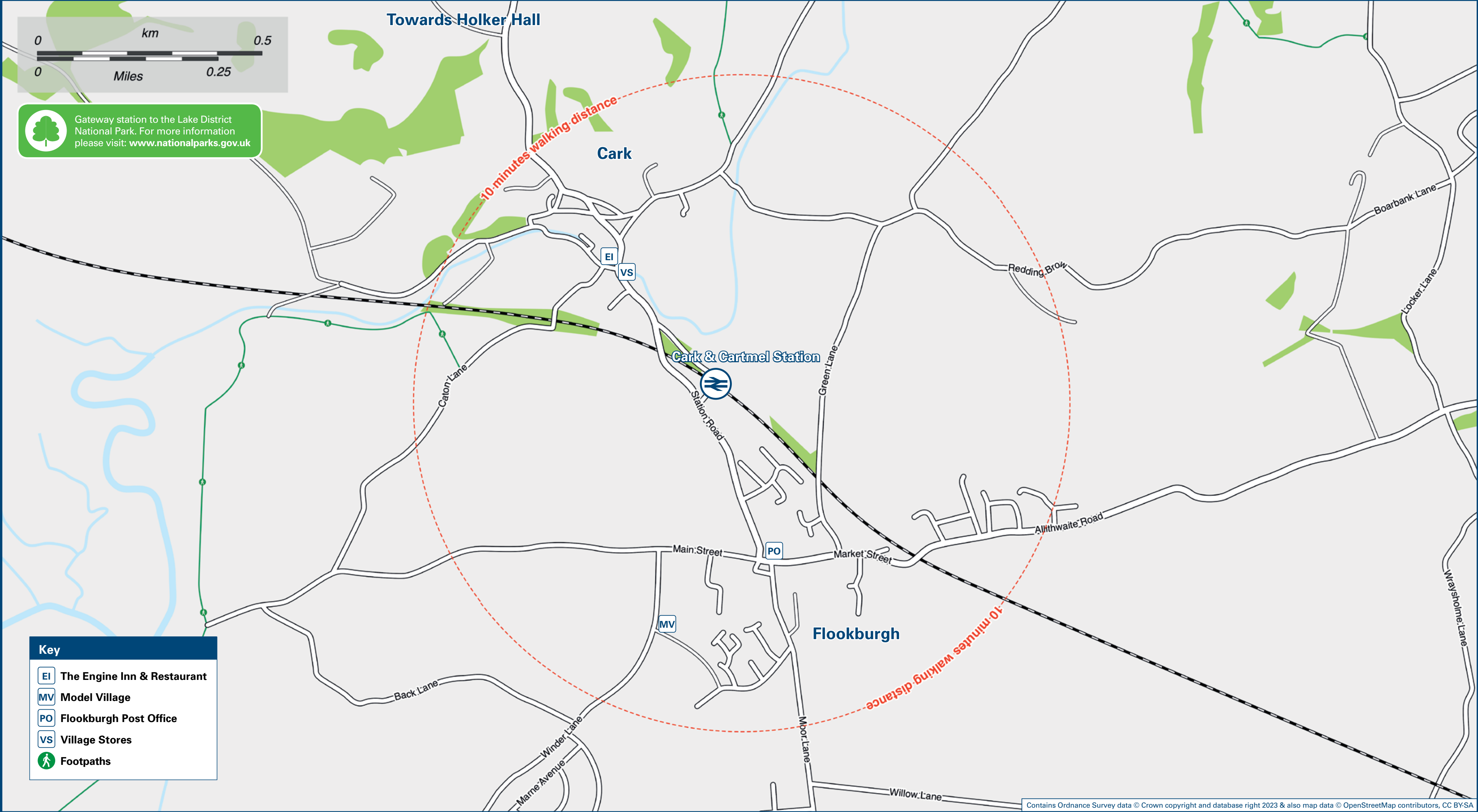




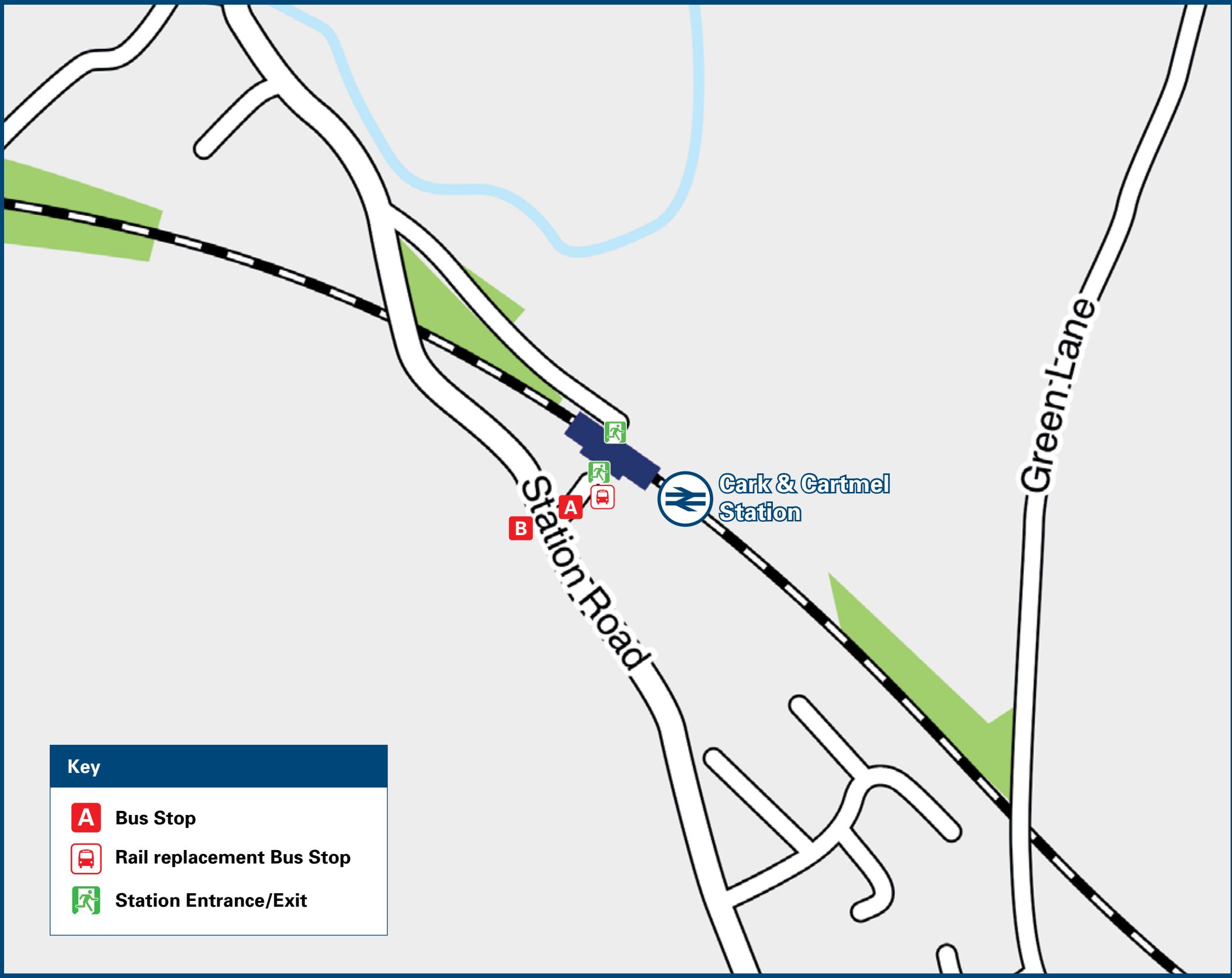
Cark & Cartmel Station

Onward Travel Information

Local area map



Buses



Rail replacement buses will depart from the entrance to the station car park

Main destinations by bus

(Data correct at December 2023)

DESTINATION	BUS ROUTES	BUS STOP
Allithwaite	530	A
Cartmel	530	B
Flookburgh	530	A
		(or a 10 minute walk)
Grange-over-Sands	530	A
Kents Bank	530	A
Lakeland Leisure Park	530	A
Ravenstown	530	A

Notes

Bus route 530 operates a limited (1 bus a day) service, Mondays to Saturdays only. No Saturday or Sunday service.

For bus times please see bus stop timetables or contact Traveline

Direct trains operate to this destination from this station

National Park The Lake District National Park; www.lakedistrict.gov.uk/

Taxis

Cark & Cartmel station has no taxi rank or cab office. Advance booking is essential, please consider using the following local operators: (Inclusion of this number doesn't represent any endorsement of the taxi firm)

Cartmel Cars
07888 915 734

Blueworks
015395 319 95

Iain's Taxi Haverthwaite
07788 889 525

Further information about all onward travel

Local Cycle Info

www.westmorlandandfurness.gov.uk/parking-streets-and-transport/active-travel
For more information about cycle routes.

National Cycle Info

sustrans.org.uk
Sustrans is the UK's leading sustainable transport charity.

Bus Times

See timetable displays at bus stops.

www.traveline.info
0871 200 22 33
calls cost 15p per minute plus your phone company's access charge

NextBuses

Find the bus times for your stop.
Search for a bus stop by entering a postcode, street & town or a stop name & town.

PlusBus

plusbus.info
A discount price 'bus pass' that you buy with your train ticket. It gives you unlimited bus travel around your chosen town, on participating buses.

National Rail Enquiries

Online nationalrail.co.uk	NRE App Free National Rail Enquiries app for iOS and Android	Social Media facebook.com/nationalrailenq @nationalrailenq	Alert Me You can sign up to Alert Me messages on the National Rail Enquiries website where you can receive train and platform notifications directly to your smart phone. nationalrail.co.uk/alertme	Contact Centre 03457 48 49 50 Calls cost no more than calls to geographic numbers (01 or 02) and may be recorded.	PlusBike nationalrail.co.uk/plusbike For more information.
---	--	---	---	--	--



This poster shows details of popular destinations and main, frequent bus routes. Additional services may run, so please check with Traveline or see posters at local bus stops. Whilst considerable care has been taken to ensure the information contained on this poster is correct and accurate, National Rail cannot accept responsibility for any loss or inconvenience caused by any errors or omissions, or for loss, damage, injury or inconvenience relating to the cancellation, alteration, delay or diversion of a service. For any feedback, please e-mail comments@onwardtravelposters.com

Scan this code with your mobile for full station information.