



# Crediton Station

# Onward Travel Information

## Buses



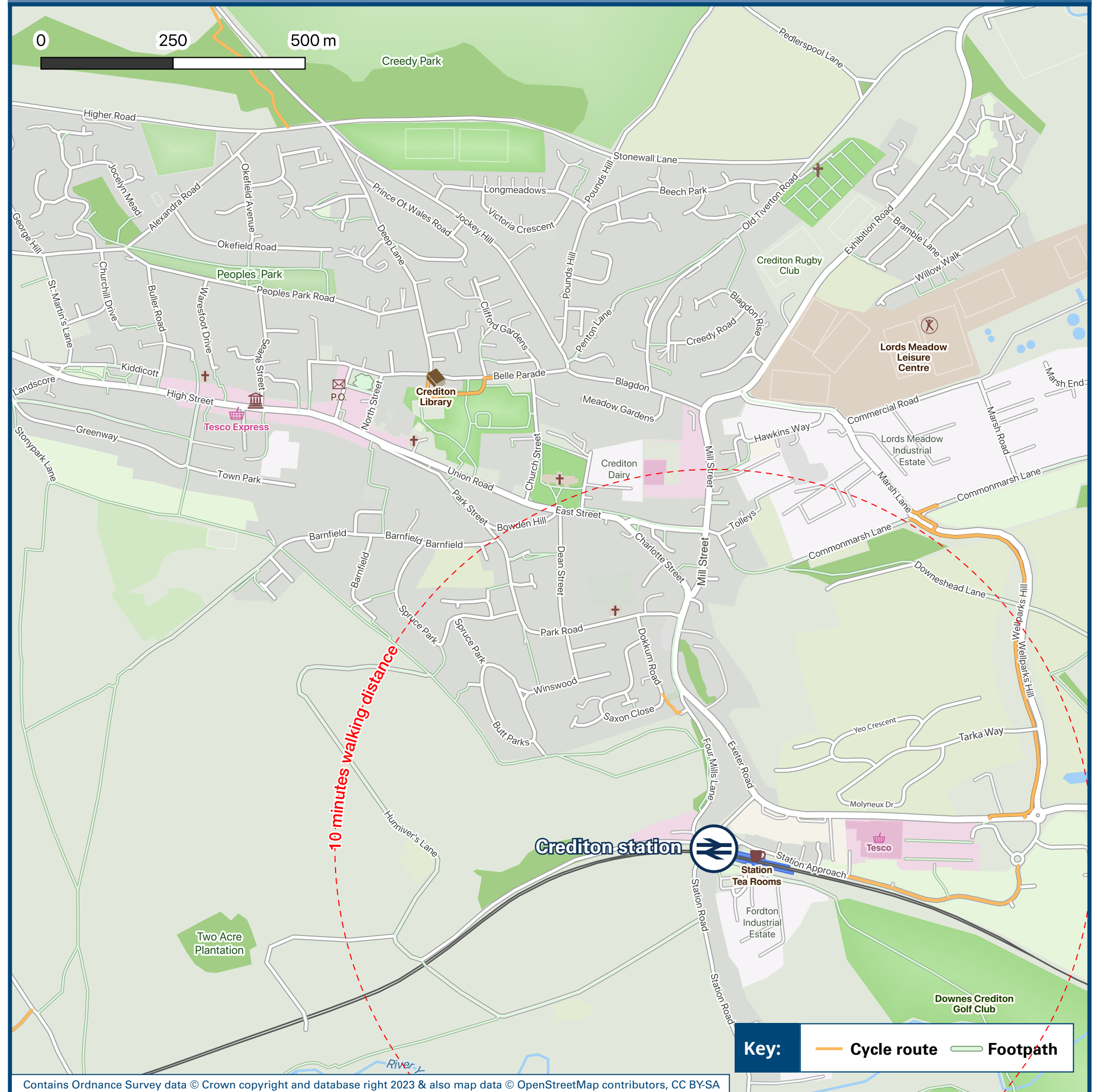
**Key**

- Bus Stop
- Rail replacement Bus Stop
- Station Entrance/Exit



Rail replacement buses/coaches depart from the car park at the front of the station by the entrance to Platform 1 station entrance. Buses starting at Crediton depart from the car park at the front of the station, Platform 1 side.

## Local area map



## Main destinations by bus

(Data correct at November 2023)



DESTINATION	BUS ROUTES	BUS STOP
Barnstaple	5B*	B
Beaford	5B*	B
Bideford	5B*	B
Bow	5A, 5B*	B
Chawleigh	5C*	B
Chulmleigh	5C*	B
Copplestone	5A, 5B*, 5C*	B
Cowley Bridge	5, 5A, 5B*, 5C*, 369*	A
Crediton (High Street)	5, 5A, 5B*, 5C*, 369*	B
Crediton (Hospital)	5A, 5B*, 369*	B
Dolton	5B*	B
Exbourne	5A	B

DESTINATION	BUS ROUTES	BUS STOP
Exeter City Centre	5, 5A, 5B*, 5C*, 369*	A
Folly Gate	5A	B
Fremington	5B*	B
Great Torrington	5B*	B
Half Moon Village	5, 5A, 5B*, 5C*, 369*	A
Hatherleigh	5A	B
Jacobstowe	5A	B
Lapford	5C*	B
Lapford Cross	5C*	B
Morchard Bishop	369*	B
Morchard Road	5C*	B
Newbuildings	369*	B

DESTINATION	BUS ROUTES	BUS STOP
Newton St Cyres	5, 5A, 5B*, 5C*, 369*	A
North Tawton	5A, 5B*	B
Okehampton	5A	B
Sampford Chapple	5A	B
Sampford Courtenay	5A	B
Sandford	369*	B
West Sandford	5A, 5B*, 369*	B
Winkleigh	5B*	B

**Notes**

Bus route 5 runs daily  
 Bus route 5A runs on Mondays to Saturdays only.

Direct trains operate from this station to this destination.

\* Bus routes 5B, 5C & 369 run limited services on Mondays to Saturdays, only.

**Taxis**

Crediton station has no taxi rank or cab office. Advance booking is essential, please consider using the following local operators: (Inclusion of this number doesn't represent any endorsement of the taxi firm)

**Crediton Cars** 01363 777 714

**White Swan Taxis** 01363 777 786

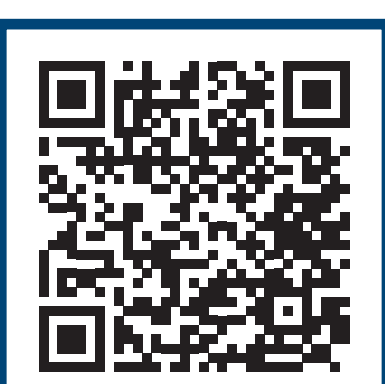
**Apple Taxis (Exeter)** 01392 666 666

### Further information about all onward travel

<b>Local Cycle Info</b> middevon.gov.uk For more information about cycle routes.	<b>National Cycle Info</b> sustrans.org.uk Sustrans is the UK's leading sustainable transport charity.	<b>Bus Times</b> See timetable displays at bus stops. <a href="http://www.traveline.info">www.traveline.info</a> 0871 200 22 33 calls cost 12p per minute plus your phone company's access charge	<b>NextBuses</b> <b>Find the bus times for your stop.</b> Search for a bus stop by entering a postcode, street & town or a stop name & town.	<b>PlusBus</b> <b>plusbus.info</b> A discount price "bus pass" that you buy with your train ticket. It gives you unlimited bus travel around your chosen town, on participating buses.
--	--	---	--	--

### National Rail Enquiries

<b>Online</b> nationalrail.co.uk	<b>NRE App</b> Free National Rail Enquiries app for iOS and Android	<b>Social Media</b> facebook.com/nationalrailenq @nationalrailenq	<b>Alert Me</b> You can sign up to Alert Me messages on the National Rail Enquiries website where you can receive train and platform notifications directly to your smart phone. nationalrail.co.uk/alertme	<b>Contact Centre</b> 03457 48 49 50 Calls cost no more than calls to geographic numbers (01 or 02) and may be recorded.	<b>PlusBike</b> nationalrail.co.uk/plusbike For more information.
-------------------------------------	--	---	---	--	---



This poster shows details of popular destinations and main, frequent bus routes. Additional services may run, so please check with Traveline or see posters at local bus stops. Whilst considerable care has been taken to ensure the information contained on this poster is correct and accurate, National Rail cannot accept responsibility for any loss or inconvenience caused by any errors or omissions, or for loss, damage, injury or inconvenience relating to the cancellation, alteration, delay or diversion of a service. For any feedback, please e-mail comments@onwardtravelposters.com