



Crediton Station

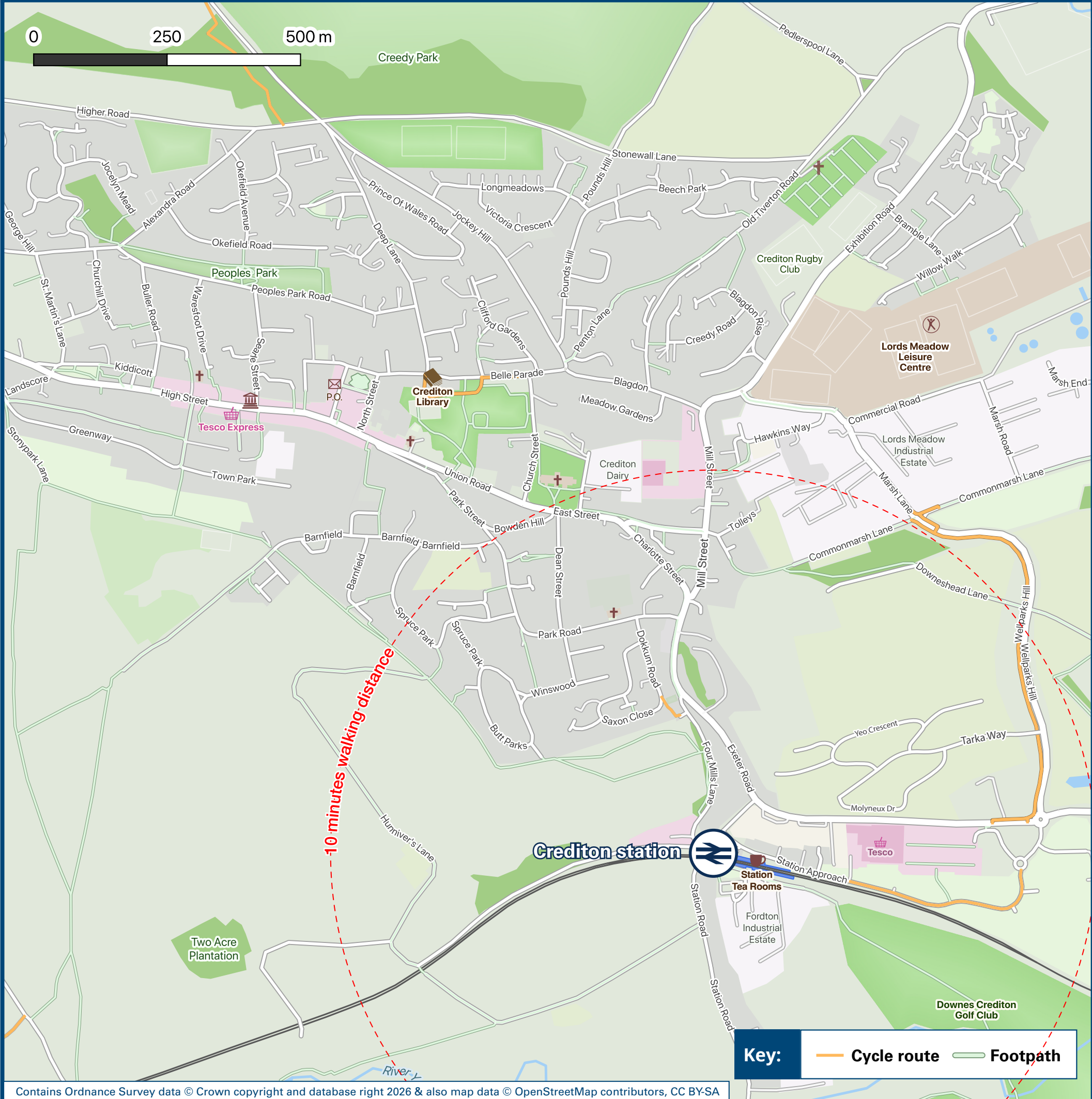
Onward Travel Information

Buses



Rail replacement buses/coaches depart from Station Approach (Platform 1 side) or as directed by signs.

Local area map



Main destinations by bus

(Data correct at January 2026)



DESTINATION	BUS ROUTES	BUS STOP
Barnstaple	5B*	B
Beaford	5B*	B
Bideford	5B*	B
Bow	5A, 5B*	B
Chawleigh	5C*	B
Chulmleigh	5C*	B
Copplestone	5A, 5B*, 5C*	B
Cowley Bridge	5, 5A, 5B*, 5C*, 369*	A
Crediton (High Street)	5, 5A, 5B*, 5C*, 369*	B
Crediton (Hospital)	5A, 5B*, 5C*, 369*	B
Dolton	5B*	B
Exbourne	5A	B
Exeter City Centre	5, 5A, 5B*, 5C*, 369*	A

DESTINATION	BUS ROUTES	BUS STOP
Folly Gate	5A	B
Fremington	5B*	B
Great Torrington	5B*	B
Half Moon Village	5, 5A, 5B*, 5C*, 369*	A
Hatherleigh	5A	B
Jacobstowe	5A	B
Lapford	5C*	B
Lapford Cross	5C*	B
Morchard Bishop	369*	B
Morchard Road	5C*	B
Newbuildings	369*	B
Newton St Cyres	5, 5A, 5B*, 5C*, 369*	A
North Tawton	5A, 5B*	B

DESTINATION	BUS ROUTES	BUS STOP
Okehampton	5A	B
Sampford Chapple	5A	B
Sampford Courtenay	5A	B
Sandford	369*	B
West Sandford	5A, 5B*, 369*	B
Winkleigh	5B*	B

Notes

Bus route 5 runs a daily service.
Bus route 5A runs a service on Mondays to Saturdays, only.
For bus times and days of operation please contact Traveline on www.traveline.info or call: 0871 200 22 33
Direct trains operate from this station to this destination.
* Bus routes 5B, 5C & 369 run limited services on Mondays to Saturdays, only.

Taxis

Crediton station has no taxi rank or cab office. Advance booking is essential, please consider using the following local operators: (Inclusion of this number doesn't represent any endorsement of the taxi firm)

Crediton Cars
01363 777 714

White Swan Taxis
07928 115 421

Apple Taxis (Exeter)
01392 666 666

Further information about all onward travel

Local Cycle Info	National Cycle Info	Bus Times	PlusBus
middevon.gov.uk For more information about cycle routes.	walkwheelcycletrust.org.uk	See timetable displays at bus stops.	plusbus.info PlusBus is a discount price 'bus pass' that you buy with your train ticket. It gives you unlimited bus travel around your chosen town, on participating buses. Visit www.plusbus.info



National Rail Enquiries

Online	NRE App	Social Media	Alert Me	Contact Centre	PlusBike
nationalrail.co.uk	Free National Rail Enquiries app for iOS and Android	facebook.com/nationalrailenq @nationalrailenq	You can sign up to Alert Me messages on the National Rail Enquiries website where you can receive train and platform notifications directly to your smart phone. nationalrail.co.uk/alertme	03457 48 49 50 Calls cost no more than calls to geographic numbers (01 or 02) and may be recorded.	nationalrail.co.uk/plusbike For more information.



National Rail
Britain's train companies working together



This poster shows details of popular destinations and main, frequent bus routes. Additional services may run, so please check with Traveline or see posters at local bus stops. Whilst considerable care has been taken to ensure the information contained on this poster is correct and accurate, National Rail cannot accept responsibility for any loss or inconvenience caused by any errors or omissions, or for loss, damage, injury or inconvenience relating to the cancellation, alteration, delay or diversion of a service. For any feedback, please e-mail comments@onwardtravelposters.com

Scan this code with your mobile for full station information.