



# Harlington (Beds) Station

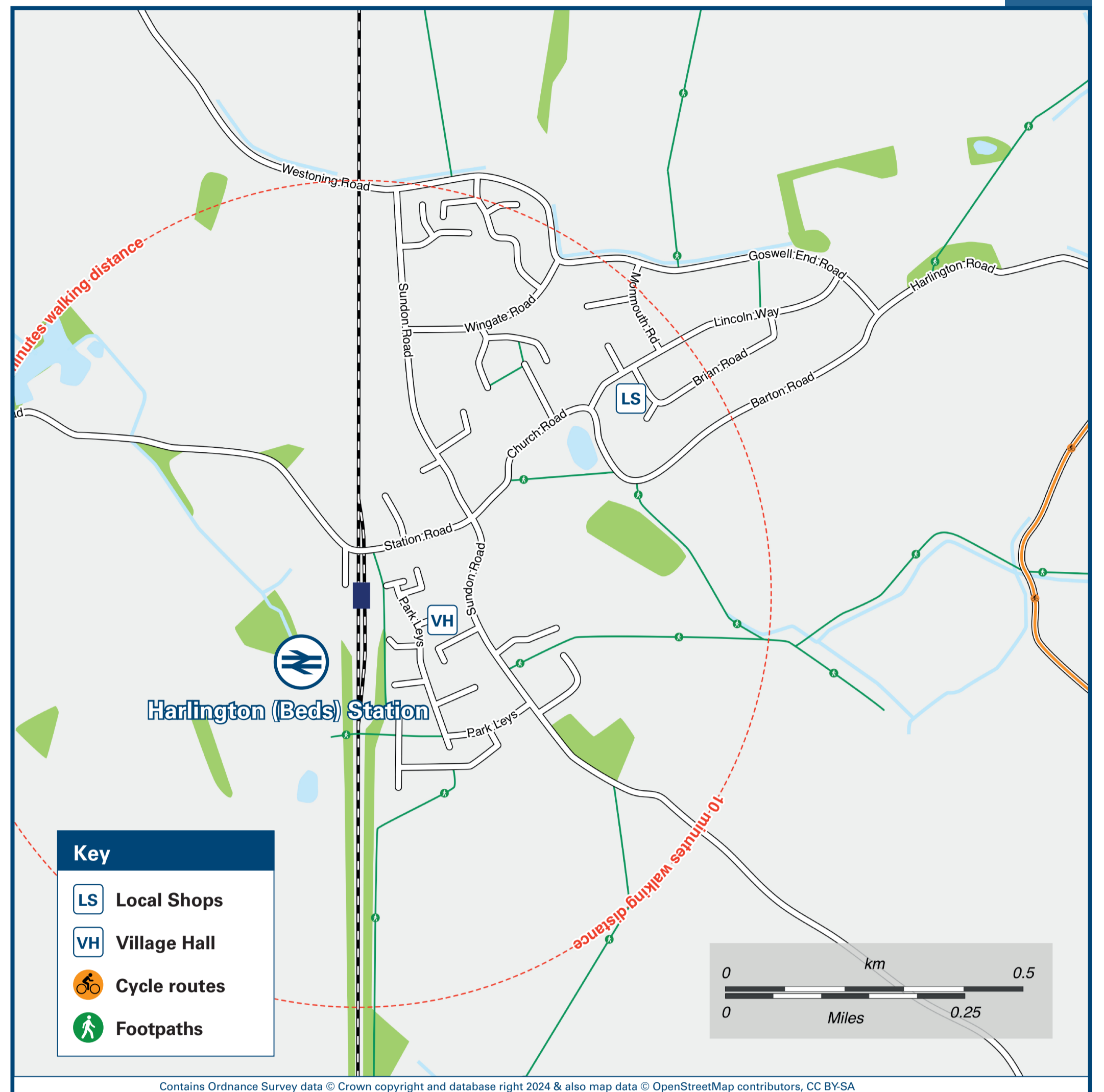
## Onward Travel Information

### Buses and Taxis



Rail replacement buses depart from public bus stops A & B on Toddington Road, near Station Approach Road.

### Local area map



### Main destinations by bus

(Data correct at May 2024)

| DESTINATION           | BUS ROUTES | BUS STOP | DESTINATION                        | BUS ROUTES | BUS STOP | DESTINATION | BUS ROUTES | BUS STOP |
|-----------------------|------------|----------|------------------------------------|------------|----------|-------------|------------|----------|
| Ampthill              | 42         | B        | Flitwick                           | 42         | B        | Toddington  | 42         | A        |
| Bedford (Town Centre) | 42         | B        | Houghton Conquest                  | 42         | B        | Westoning   | 42         | B        |
| Bedford Hospital      | 42         | B        | Kempston (Interchange Retail Park) | 42         | B        |             |            |          |

**Notes**

Bus route 42 runs a limited service on Mondays to Saturdays only. No bus service operates from Harlington on Sundays or Public Holidays.

Direct trains operate to this destination from this station.

### Taxis

Harlington station is served by a taxi rank or a cab office. Check availability before travelling, and pre-book if necessary. Please consider the following local operators: (Inclusion of this number doesn't represent any endorsement of the taxi firm)

**Britannia Cabs**  
01525 600 600

**United Travel (Dunstable) Taxis**  
01582 515 151

**A1 Station (Flitwick)**  
01525 757 575

### Further information about all onward travel

|  |  |  |   |  |
|--|--|--|---|--|
| <b>Local Cycle Info</b><br><a href="http://centralbedfordshire.gov.uk">centralbedfordshire.gov.uk</a><br><small>For more information about cycle routes.</small> | <b>National Cycle Info</b><br><a href="http://sustrans.org.uk">sustrans.org.uk</a><br><small>Sustrans is the UK's leading sustainable transport charity.</small> | <b>Bus Times</b><br><small>See timetable displays at bus stops.</small><br><a href="http://www.traveline.info">www.traveline.info</a><br><b>0871 200 22 33</b><br><small>calls cost 13p per minute plus your phone company's access charge</small> | <b>NextBuses</b><br><br><b>Find the bus times for your stop.</b><br><small>Search for a bus stop by entering a postcode, street &amp; town or a stop name &amp; town.</small> | <b>PlusBus</b><br><a href="http://plusbus.info">plusbus.info</a><br><small>A discount price 'bus pass' that you buy with your train ticket. It gives you unlimited bus travel around your chosen town, on participating buses.</small> |
|--|--|--|---|--|

### National Rail Enquiries

|   |   |  |  |  |   |
|---|---|--|--|--|---|
| <b>Online</b><br><a href="http://nationalrail.co.uk">nationalrail.co.uk</a> | <b>NRE App</b><br><b>Free National Rail Enquiries app for iOS and Android</b> | <b>Social Media</b><br><a href="https://facebook.com/nationalrailenq">facebook.com/nationalrailenq</a><br>@nationalrailenq | <b>Alert Me</b><br><small>You can sign up to Alert Me messages on the National Rail Enquiries website where you can receive train and platform notifications directly to your smart phone.</small><br><a href="http://nationalrail.co.uk/alertme">nationalrail.co.uk/alertme</a> | <b>Contact Centre</b><br><b>03457 48 49 50</b><br><small>Calls cost no more than calls to geographic numbers (01 or 02) and may be recorded.</small> | <b>PlusBike</b><br><a href="http://nationalrail.co.uk/plusbike">nationalrail.co.uk/plusbike</a><br><small>For more information.</small> |
|---|---|--|--|--|---|

# ThamesLink



# National Rail

Britain's train companies working together



This poster shows details of popular destinations and main, frequent bus routes. Additional services may run, so please check with Traveline or see posters at local bus stops. Whilst considerable care has been taken to ensure the information contained on this poster is correct and accurate, National Rail cannot accept responsibility for any loss or inconvenience caused by any errors or omissions, or for loss, damage, injury or inconvenience relating to the cancellation, alteration, delay or diversion of a service. For any feedback, please e-mail [comments@onwardtravelposters.com](mailto:comments@onwardtravelposters.com)

Scan this code with your mobile for full station information.