



# University (Birmingham) Station

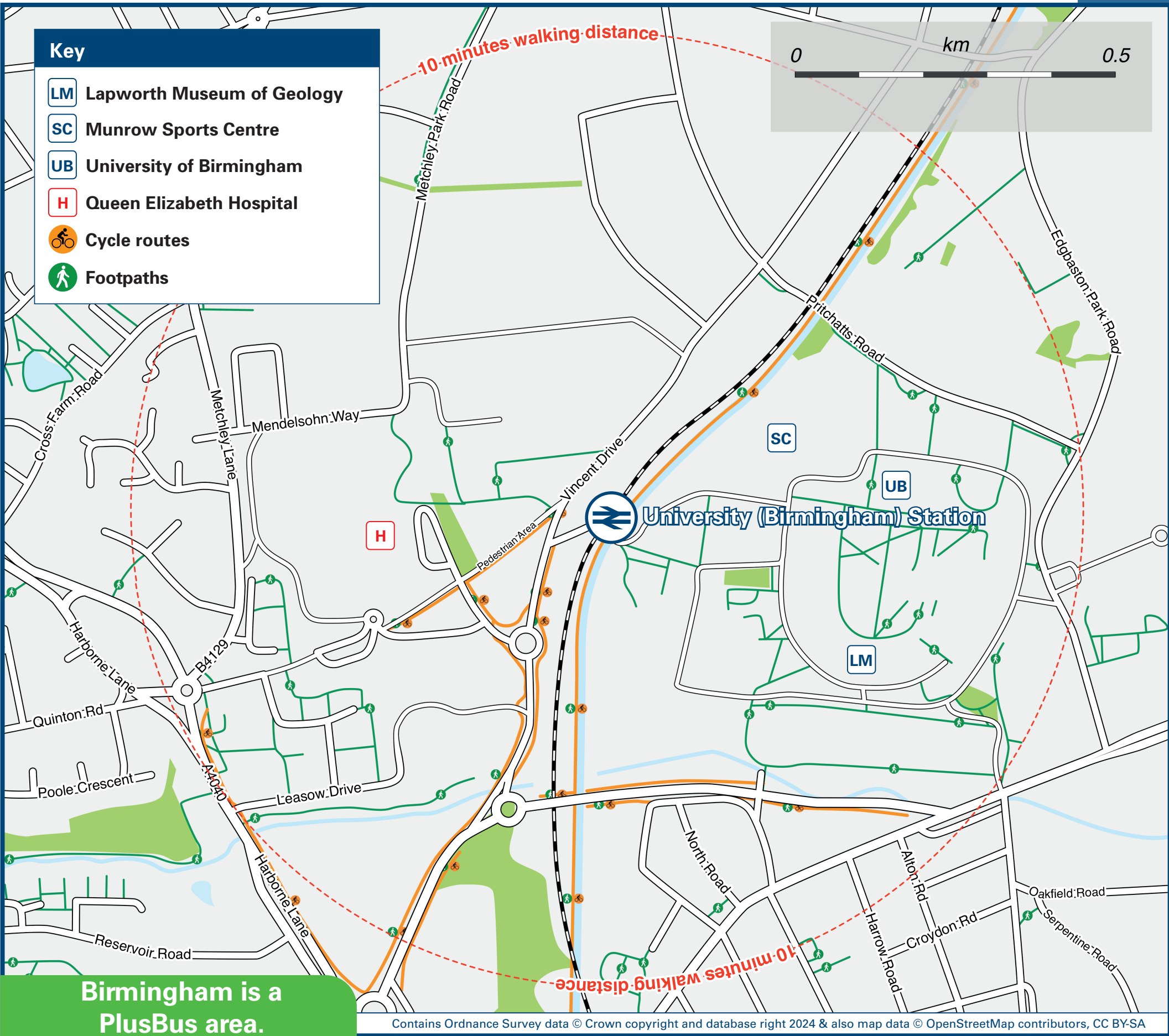
## Onward Travel Information

### Buses



Rail replacement buses/coaches for services towards Selly Oak / Longbridge / Redditch - the public bus stop **QB** (Vincent Drive) on the near side of New Fosse Way outside the station. For services towards Birmingham - the public bus stop **QB** (Vincent Drive) on the far side of New Fosse Way, opposite the station.

### Local area map



**PlusBus** is a discount price 'bus pass' that you buy with your train ticket. It gives you unlimited bus travel around your chosen town, on participating buses. Visit [www.plusbus.info](http://www.plusbus.info)

### Main destinations by bus

(Data correct at July 2024)



DESTINATION	BUS ROUTES	BUS STOP
● Acocks Green	41	<b>QC</b>
● Bangham Pit	X21	<b>QE</b>
● Bartley Green (for Newman University)	X22	<b>QE</b>
● Bearwood	48	<b>QD</b>
● Birmingham City Centre	X21, X22	<b>QD</b>
● Bournbrook	76	<b>QC</b>
● Bournville (for Cadbury World)	55*	<b>QA</b>
● Cannon Hill Park	41	<b>QC</b>
● Cofton Hacket	20A	<b>QA</b>
● Cotteridge (for Kings Norton Station)	55*	<b>QA</b>
● Court Oak Road	55*	<b>QA</b>
● Dudley	19	<b>QB</b>
● Edgbaston	X21, X22	<b>QD</b>
● Five Ways	X21, X22	<b>QD</b>
● Halesowen	19	<b>QB</b>
	55*	<b>QA</b>
● Harborne	19, 76	<b>QB</b>
	48	<b>QD</b>
	19, 76	<b>QB</b>
● Harts Green	55*	<b>QC</b>
	X22	<b>QE</b>
● Hawkesley	46, 46A	<b>QC</b>
● King's Heath	76	<b>QC</b>

DESTINATION	BUS ROUTES	BUS STOP
● Lee Bank	X21, X22	<b>QD</b>
● Londonderry	48	<b>QD</b>
	20, 20A	<b>QA</b>
● Longbridge	55*	<b>QC</b>
● Moseley	41	<b>QC</b>
● Netherton	19	<b>QB</b>
● Northfield	20, 20A	<b>QA</b>
● Northfield Shopping Centre	46, 46A, 55*	<b>QC</b>
	76	<b>QB</b>
● Pool Farm (for Cadbury College)	46	<b>QC</b>
● Quinton	19	<b>QB</b>
● Rednal	20, 20A	<b>QA</b>
	55*	<b>QC</b>
● Ridgacre	19	<b>QB</b>
	20, 20A	<b>QA</b>
● Selly Oak	X21	<b>QE</b>
	46, 46A, 55*, 76	<b>QC</b>
● Selly Park	76	<b>QC</b>
● Shirley (Town Centre)	76	<b>QC</b>
● Solihull (Town Centre & Station)	76	<b>QC</b>
● Sparkhill	41	<b>QC</b>
● Warley Woods	48	<b>QD</b>

DESTINATION	BUS ROUTES	BUS STOP
	46, 46A	<b>QC</b>
● Weoley Castle	76	<b>QB</b>
	X21	<b>QE</b>
● West Bromwich	48	<b>QD</b>
● West Heath	46, 46A	<b>QC</b>
● Woodgate (Wood Lane)	X22	<b>QE</b>
● Woodgate Valley North	55*	<b>QA</b>
	19	<b>QB</b>
● Woodgate Valley South	X22	<b>QE</b>
	55*	<b>QA</b>
● Worlds End	19	<b>QB</b>
● Yardley Wood	76	<b>QC</b>

#### Notes

- **PlusBus** destination, please see below for details. Bus routes 19, 20, 20A, 46, 48, 76, X21 and X22 run daily, Mondays to Sundays. Bus route 41 runs a Mondays to Saturdays service, only. No Sunday service.
- Direct trains operate to this destination from this Station.
- \* Bus route 55 runs a limited service between 1000 and 1500 Monday to Saturday only.

### Taxis

University (Birmingham) Station has no taxi rank or cab office. Advance booking is essential, please consider using the following local operators: (Inclusion of this number doesn't represent any endorsement of the taxi firm)

**Birmingham Taxis**  
0121 702 2000

**VEEZU**  
0121 744 1111

**Edgbaston Taxis**  
0121 667 8322

### Further information about all onward travel

#### Local Cycle Info

[www.tfwm.org.uk/plan-your-journey/ways-to-travel/cycling-and-walking](http://www.tfwm.org.uk/plan-your-journey/ways-to-travel/cycling-and-walking)  
For more information about cycle routes.

#### National Cycle Info

[sustrans.org.uk](http://sustrans.org.uk)  
Sustrans is the UK's leading sustainable transport charity.

#### Bus Times

See timetable displays at bus stops.

[www.traveline.info](http://www.traveline.info)  
0871 200 22 33  
calls cost 15p per minute plus your phone company's access charge

#### NextBuses

Find the bus times for your stop. Search for a bus stop by entering a postcode, street & town or a stop name & town.

#### PlusBus

[plusbus.info](http://plusbus.info)  
A discount price 'bus pass' that you buy with your train ticket. It gives you unlimited bus travel around your chosen town, on participating buses.

### National Rail Enquiries

Online	NRE App	Social Media	Alert Me	Contact Centre	PlusBike
<a href="http://nationalrail.co.uk">nationalrail.co.uk</a>	Free National Rail Enquiries app for iOS and Android	<a href="https://www.facebook.com/nationalrailenq">facebook.com/nationalrailenq</a> <a href="https://twitter.com/nationalrailenq">@nationalrailenq</a>	You can sign up to Alert Me messages on the National Rail Enquiries website where you can receive train and platform notifications directly to your smart phone. <a href="http://nationalrail.co.uk/alertme">nationalrail.co.uk/alertme</a>	<b>03457 48 49 50</b> Calls cost no more than calls to geographic numbers (01 or 02) and may be recorded.	<a href="http://nationalrail.co.uk/plusbike">nationalrail.co.uk/plusbike</a> For more information.

