



# University (Birmingham) Station

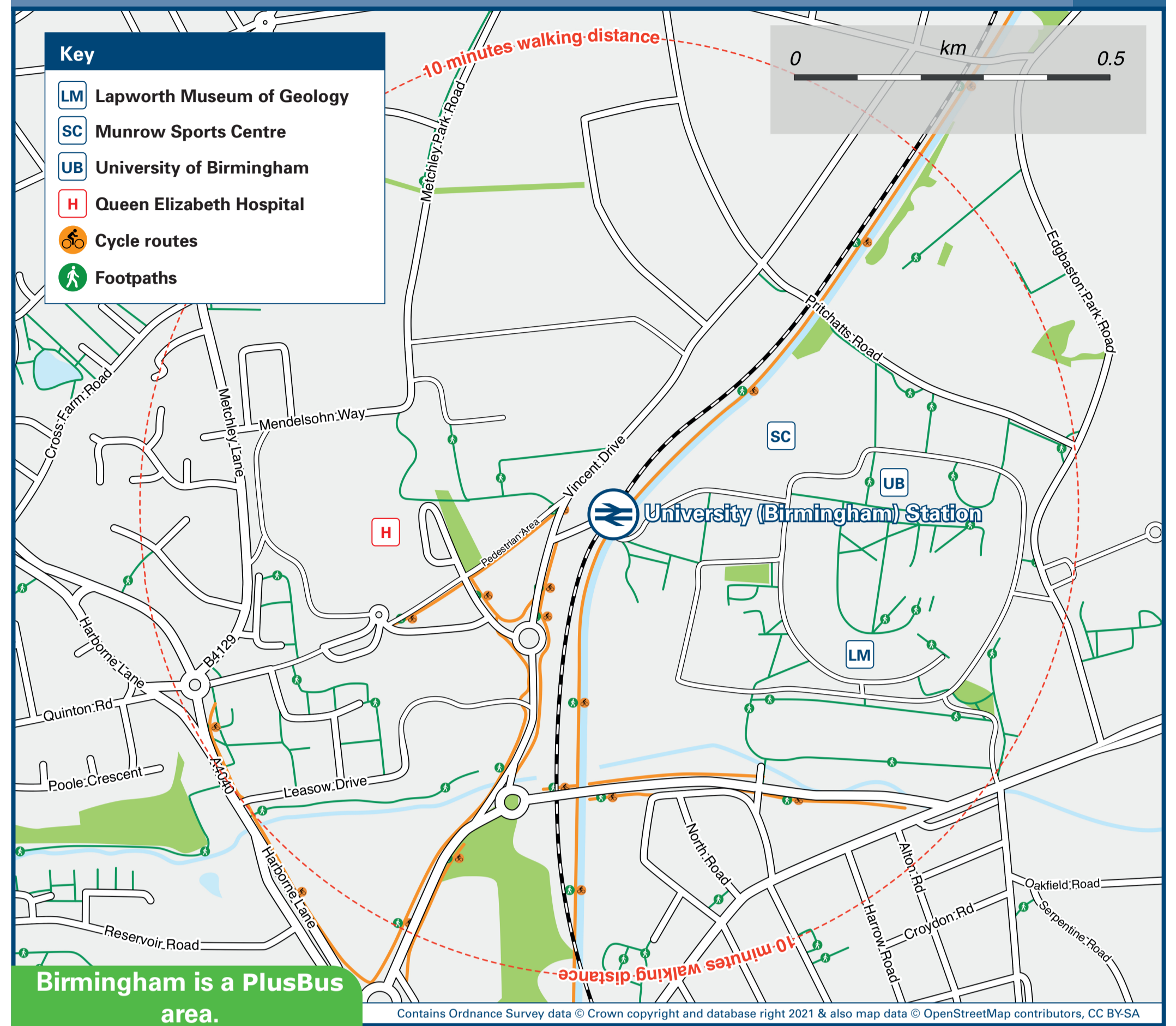
# Onward Travel Information

## Buses



Rail replacement buses/coaches for services towards Longbridge/Redditch call at Bus Stop QE outside the station; and for services towards Birmingham call at Bus Stop QD opposite the station (see map).

## Local area map



PlusBus is a discount price 'bus pass' that you buy with your train ticket. It gives you unlimited bus travel around your chosen town, on participating buses. Visit [www.plusbus.info](http://www.plusbus.info)

## Main destinations by bus

(Data correct at August 2023)



DESTINATION	BUS ROUTES	BUS STOP
● Acocks Green	41	QC
● Bangham Pit	X21	QE
● Bartley Green (for Newman University)	X22	QE
● Bearwood	48	QD
● Birmingham City Centre	X21, X22	QD
● Bournbrook	76	QC
● Bournville (for Cadbury World)	55*	QA
● Cannon Hill Park	41	QC
● Cofton Hackett	20A	QA
● Cotteridge (for Kings Norton Station)	55*	QA
● Court Oak Road	55*	QA
● Dudley	19	QB
● Edgbaston	X21, X22	QD
● Five Ways	X21, X22	QD
● Halesowen	19	QB
	55*	QA
● Harborne	19, 76	QB
	48	QD
	19, 76	QB
● Harts Green	55*	QC
	X22	QE
● Hawkesley	46, 46A	QA

DESTINATION	BUS ROUTES	BUS STOP
● King's Heath	76	QC
● Lee Bank	X21, X22	QD
● Londonderry	48	QD
	20, 20A	QA
● Longbridge	55*	QC
● Moseley	41	QC
● Netherton	19	QB
● Northfield	20, 20A, 46, 46A	QA
● Northfield Shopping Centre	46, 46A, 55*	QC
	76	QB
● Pool Farm (for Cadbury College)	46	QA
● Quinton	19	QB
● Rednal	20, 20A	QA
	55*	QC
● Ridgacre	55*	QA
	19	QB
	20, 20A, 46	QA
● Selly Oak	48, X21	QE
	55*, 76	QC
● Selly Park	76	QC
● Shirley (Town Centre)	76	QC
● Solihull (Town Centre & Station)	76	QC

DESTINATION	BUS ROUTES	BUS STOP
● Sparkhill	41	QC
● Warley Woods	48	QD
	46	QA
● Weoley Castle	76	QB
	X21	QE
● West Bromwich	48	QD
● West Heath	46	QA
● Woodgate (Wood Lane)	X22	QE
● Woodgate Valley North	55*	QA
	19	QB
● Woodgate Valley South	X22	QE
● Worlds End	55*	QA
	19	QB
● Yardley Wood	76	QC

### Notes

- PlusBus destination, please see below for details.
- Bus routes 19, 20, 20A, 46, 48, 76, X21 and X22 run daily, Mondays to Sundays.
- Bus route 41 runs a Mondays to Saturdays service, only. No Sunday service.
- \* Bus route 55 runs a limited service between 1000 and 1500 Monday to Saturday only.
- ⊕ Direct trains operate to this destination from this Station.

## Taxis

University (Birmingham) Station has no taxi rank or cab office. Advance booking is essential, please consider using the following local operators: (Inclusion of this number doesn't represent any endorsement of the taxi firm)

**Broad Street Cars**  
0121 213 2000

**BRUM Taxis**  
0121 442 6600

**A2B Radio Cars Birmingham**  
0121 744 1111

## Further information about all onward travel

### Local Cycle Info

[www.tfwm.org.uk/plan-your-journey/ways-to-travel/cycling-and-walking](http://www.tfwm.org.uk/plan-your-journey/ways-to-travel/cycling-and-walking)  
For more information about cycle routes.

### National Cycle Info

[sustrans.org.uk](http://sustrans.org.uk)  
Sustrans is the UK's leading sustainable transport charity.

### Bus Times

See timetable displays at bus stops.

[www.traveline.info](http://www.traveline.info)  
0871 200 22 33  
call cost 12p per minute plus your phone company's access charge

### NextBuses

Find the bus times for your stop. Search for a bus stop by entering a postcode, street & town or a stop name & town.

### PlusBus

[plusbus.info](http://plusbus.info)  
A discount price 'bus pass' that you buy with your train ticket. It gives you unlimited bus travel around your chosen town, on participating buses.

## National Rail Enquiries

**Online**  
[nationalrail.co.uk](http://nationalrail.co.uk)

**NRE App**  
Free National Rail Enquiries app for iOS and Android

**Social Media**  
facebook.com/nationalrailenq  
@nationalrailenq

**Alert Me**  
You can sign up to Alert Me messages on the National Rail Enquiries website where you can receive train and platform notifications directly to your smart phone.  
[nationalrail.co.uk/alertme](http://nationalrail.co.uk/alertme)

**Contact Centre**  
03457 48 49 50  
Calls cost no more than calls to geographic numbers (01 or 02) and may be recorded.

**PlusBike**  
[nationalrail.co.uk/plusbike](http://nationalrail.co.uk/plusbike)  
For more information.



This poster shows details of popular destinations and main, frequent bus routes. Additional services may run, so please check with Traveline or see posters at local bus stops. Whilst considerable care has been taken to ensure the information contained on this poster is correct and accurate, National Rail cannot accept responsibility for any loss or inconvenience caused by any errors or omissions, or for loss, damage, injury or inconvenience relating to the cancellation, alteration, delay or diversion of a service. For any feedback, please e-mail [comments@onwardtravelposters.com](mailto:comments@onwardtravelposters.com)

Scan this code with your mobile for full station information.