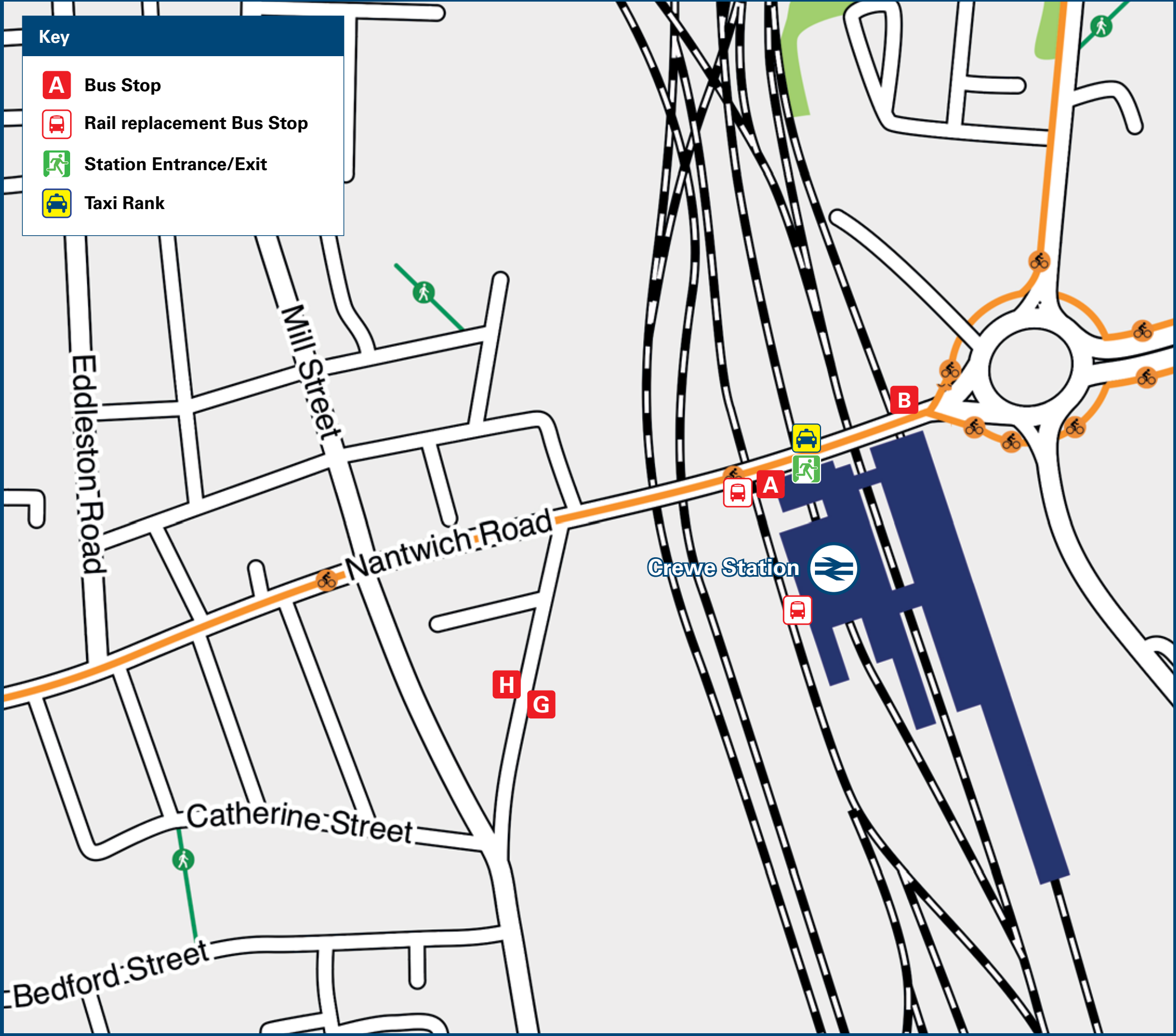




Crewe Station

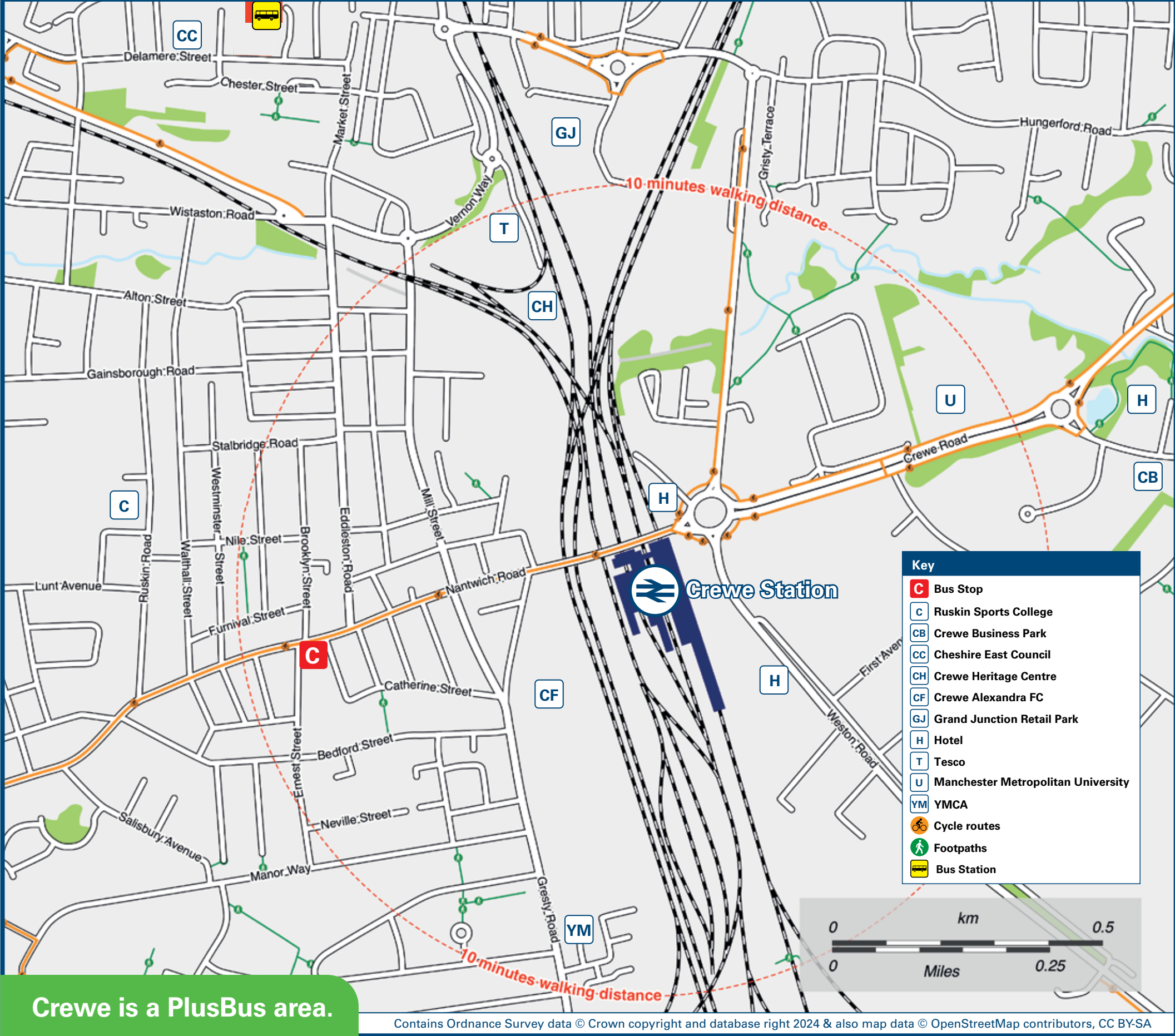
Onward Travel Information

Buses and Taxis



Rail replacement coach services can be found at the side of the station and can be accessed from platform 12, using the undercover walkway to / from the horse landing.

Local area map



PlusBus is a discount price 'bus pass' that you buy with your train ticket. It gives you unlimited bus travel around your chosen town, on participating buses. Visit www.plusbus.info

Main destinations by bus



DESTINATION	BUS ROUTES	BUS STOP
Alsager	103	B
Betley	85	B
Brookhouse Estate	12, 39	H
Burslem	103	B
Chester (Bus Interchange)	84	C#
Church Lawton	103	B
Congleton	38	B
	42	Bus Station
Coppenhall (Bradfield Road)	12	H
Crewe (Coleridge Way)	8	Bus Station
Coppenhall (Elm Drive, Shops)	8	Bus Station
Coppenhall (North Street, Post Office)	31	Bus Station
Coppenhall Lane (Premier Inn Hotel)	85	A
Crewe Business Park	37, 38, 103	B
Crewe (Rolls Avenue)	85	A
Crewe (Sydney Road)	8	Bus Station
Crewe Town Centre (Bus Station)	37, 38, 85, 103	A
	12, 39	H
Hanley	103	B
Haslington	37, 38, 103	B
Holmes Chapel	42	Bus Station
Hough	39	G
Keele and Keele University	85	B

DESTINATION	BUS ROUTES	BUS STOP
Kidsgrove	103	B
Leighton Hospital	12	H
	31, 42	Bus Station
Macclesfield	38	B
Madeley	85	B
Middlewich	37	B
	42	Bus Station
	39, 84, 84X, 85	Bus Station
Nantwich	39	G
	84, 84X	C#
	85	A
Newcastle-under-Lyme	85	B
Northwich (Interchange)	31	Bus Station
	37	B
Radway Green	103	B
Sandbach	37, 38	B
Shavington	12, 39	G
Stoke-on-Trent (Hanley Bus Station)	103	B
Tarporley	84	C#
Tunstall	103	B
West Heath	38	B
Weston	85	B
Wheelock	37, 38	B

DESTINATION	BUS ROUTES	BUS STOP
Willaston	84, 84X	C#
Winsford	31	Bus Station
	37	B
Winterley	37, 38	B
Wistaston Green	8	Bus Station
Woolstanwood (Coppenhall Lane)	85	A
Wybunbury	39	G
Wychwood Park	85	B

Notes

- PlusBus destination, please see below for details.
- Bus routes 8, 38, 84, 84X and 103 operate daily, Mondays to Sundays. Bus routes 12, 31, 37, 39 and 85 operate Mondays to Saturdays.
- For bus times contact Traveline on 0871 200 22 33 or contact D&G Bus (for bus routes 8, 12, 31, 37, 38, 42, 84X, & 85) call 01270 252 970; First Potteries (for bus route 103) call 0345 646 0707; Mikro Coaches (for bus route 39) call 01270 588 867 or Stagecoach (for bus route 84) call 0345 241 8000.
- Direct trains operate to this destination from this station.
- It's a 10 to 15 minutes walk from this station to Crewe town centre & bus station and to the Crewe Business Park. See the Local area map for walking routes.
- # Walk to stop (C) (see maps) or take any bus from stop (A) or (H) to Crewe bus station and change for these services.

Taxis

Crewe is a major station where taxis are usually available on a rank. Advance booking is not normally necessary, unless arriving early in the morning or late at night. Operators who may accept bookings include: (Inclusion of this number doesn't represent any endorsement of the taxi firm)

Crewe Cabs
01270 667 235

Crewe Taxis
01270 295 069

Westside Taxis
01270 258 888

Further information about all onward travel

Local Cycle Info	National Cycle Info	Bus Times	NextBuses	PlusBus
cheshireeast.gov.uk For more information about cycle routes.	sustrans.org.uk Sustrans is the UK's leading sustainable transport charity.	See timetable displays at bus stops. www.traveline.info 0871 200 22 33 calls cost 15p per minute plus your phone company's access charge	Find the bus times for your stop. Search for a bus stop by entering a postcode, street & town or a stop name & town.	plusbus.info A discount price 'bus pass' that you buy with your train ticket. It gives you unlimited bus travel around your chosen town, on participating buses.

National Rail Enquiries

Online	NRE App	Social Media	Alert Me	Contact Centre	PlusBike
nationalrail.co.uk	Free National Rail Enquiries app for iOS and Android	facebook.com/nationalrailenq @nationalrailenq	You can sign up to Alert Me messages on the National Rail Enquiries website where you can receive train and platform notifications directly to your smart phone. nationalrail.co.uk/alertme	03457 48 49 50 Calls cost no more than calls to geographic numbers (01 or 02) and may be recorded.	nationalrail.co.uk/plusbike For more information.



National Rail
Britain's train companies working together

