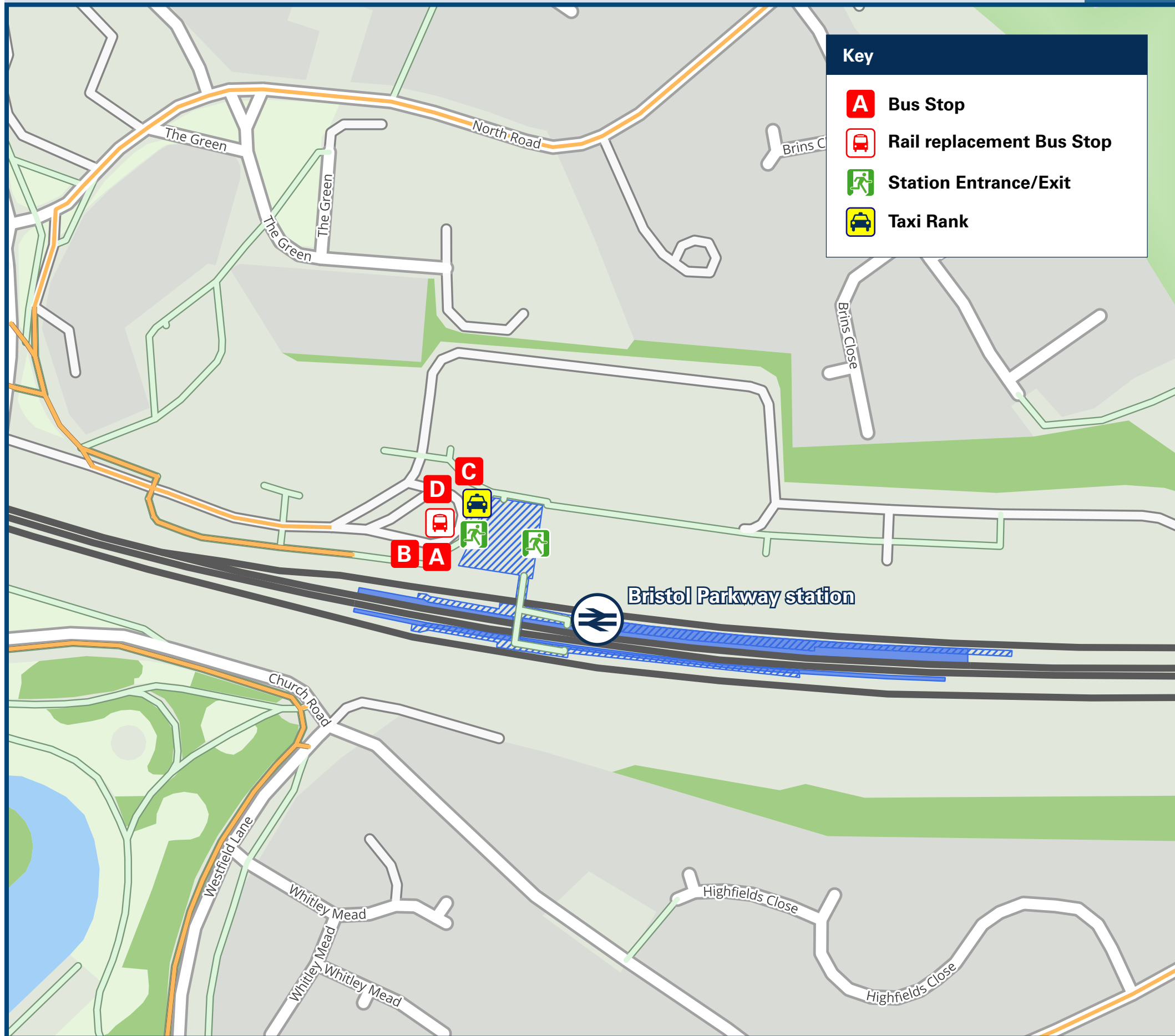




Bristol Parkway Station

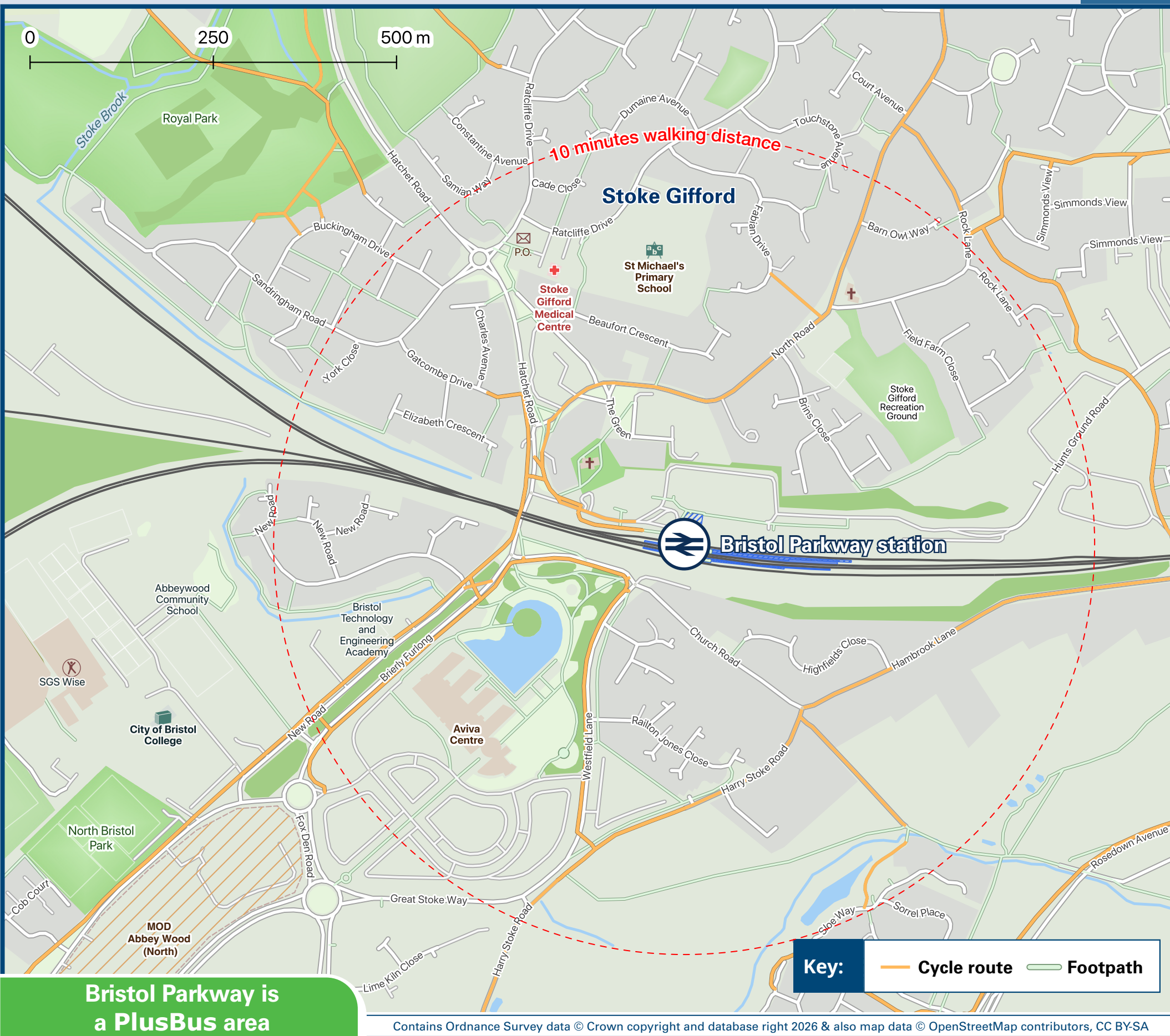
Onward Travel Information

Buses and Taxis



Rail replacement buses/coaches will depart from the front of the station, or as directed by signs.

Local area map



Bristol Parkway is a PlusBus area

Add **PlusBus** to your train ticket—now available on eTicket from leading rail ticketing apps—for unlimited bus travel in the **PlusBus** zone in your destination town or city. Visit www.plusbus.info

Main destinations by bus

(Data correct at January 2026)



DESTINATION	BUS ROUTES	BUS STOP
Avonmouth (Trading Estate)	10#, 11	A
Avonmouth (Village)	10#, 11	A
Avon Valley Railway (near Bitton)	19	A
Bedminster	74	A
Bishopston	74	A
Bitton	71	D
Bradley Stoke North	19	D
Bradley Stoke South	74	B
Bradley Stoke North (Bowsland Way / Woodlands Lane)	74	B
Bradley Stoke South	74	A
Bristol Aquarium (alight at the City Centre)	71, Y6	D
Bristol City Centre	m4	A
Bristol City Centre	71, Y6	D
Bristol City FC (Ashton Gate)	Take the train to Parson Street Station from where it is a 10 minute walk to the ground	
Bristol Dental Hospital (alight at Broadmead)	74	A
Bristol Eye Hospital (alight at Broadmead)	Y6	B
Bristol Hippodrome (alight at the City Centre)	m4	A
Bristol International Airport	74 (Alight the bus at Filton Avenue)	A
Bristol Rovers FC (Memorial Ground)	74	A
Bristol Royal Hospital for Children (alight at Broadmead)	Y6	B
Bristol Royal Infirmary (alight at Broadmead)	m4	A
Bristol Temple Meads	71	B
Broadmead Shopping Centre	74	A
Bromley Heath	71, Y6	B
Cabot Circus (Shopping Centre)	m4	D
Cadbury Heath	19	D
Chipping Sodbury	Y6	D
City of Bristol College (College Green Centre - alight at the City Centre)	74	A
Clifton Down	71	B
Clifton Down	m4	D
Clifton Down	71, Y6	B

DESTINATION	BUS ROUTES	BUS STOP
Coalpit Heath	Y6	D
Coombe Dingle	10#, 11	A
Cribbs Causeway (Bus Station)	12	D
Cribbs Causeway (The Mall)	m4	B
Cribbs Causeway (Retail Park)	12, Y6	B
Cribbs Causeway, The Venue (alight at the Retail Park)	12	B
Downend	19	D
Easter Compton	12	B
Filton	74	A
Filton (College)	71, Y6	B
Frampton Cotterell	Y6	D
Frenchay Stoke Park	19, m4	D
Great Stoke	71	B
Harry Stoke	Y6	D
Hengrove Park	19, m4	D
Henleaze	74	A
Horfield	10#, 11	A
Kingswood	Y6	B
Knowle	71, Y6	B
Lawrence Weston	19	D
Little Stoke	74	A
Marsh Common	10#	A
Montpelier	12, 74, Y6	B
New Cheltenham	m4	C
Nibley	12	B
Oldland Common	74	A
Patchway Roundabout	19	D
Pilning	Y6	D
Redland	12, 71, Y6	B
Severn Beach	19	D
Shirehampton	71, Y6	B
Southmead	12	B
Southmead Hospital	10#, 11	A
Staple Hill	Y6	B
Temple Meads	10#, 11	A
Temple Quay	Y6	B
University of The West of England (UWE - Frenchay Campus)	19	D
Warmley	19	D

DESTINATION	BUS ROUTES	BUS STOP
We The Curious (Bristol Science Centre)	74	A
Westbury Village	71~	B
Willow Brook Centre (Bradley Stoke)	m4~	D
Winterbourne	10#, 11	A
Yate (Railway Station & Shopping Centre)	74	B
Yate (Railway Station & Shopping Centre)	Y6	D

Notes

- PlusBus** destination, please see below for details
- Bus route 11 operates a regular Mondays to Saturdays service. No Sundays or Public Holidays service.
- Local bus services serving the wider area can be accessed via interchange points at Bristol City Centre/Broadmead, Cribbs Causeway, and University of the West of England (UWE) Frenchay Campus.
- For bus times please see bus stop timetables, or contact travelwest.info
- PlusBus** tickets are only valid within the Bristol **PlusBus** zone on First Buses, A-Bus & Stagecoach West. **PlusBus** tickets are not valid on the Bristol International Airport 'Flyer' (route A1) and all Park&Ride services
- With no fixed timetable or route, WESTlink runs with a fleet of minibuses across most of the West of England outside Bath and Bristol city centres. You can book a journey by selecting your pick-up and drop-off points in the WESTlink mobile app, or by calling 0117 457 8561 (Monday–Saturday, 5:30am–9:30pm). Services operate from 7am to 7pm in most areas. Find out more at westlink.app.
- Direct trains operate from this station to this destination.
- Direct trains operate to Bristol Temple Meads from where frequent buses operate to Bristol City Centre
- Please change at Bristol Temple Meads for connecting rail services to this station.
- Bus route 10 operates a regular Mondays to Saturdays service, but a limited Sundays and Public Holidays service.
- ~ Via alighting at the City Centre.

Taxis

Bristol Parkway is a major station where taxis are usually available on a rank. Advance booking is not normally necessary, unless arriving early in the morning or late at night. Operators who may accept bookings include: (Inclusion of this number doesn't represent any endorsement of the taxi firm)

Bristol Parkway Taxis
0117 254 1111

JSR 24 7 Taxi
07459 440 833

Bristols Taxi
07479 082 534

Further information about all onward travel

Local Cycle Info	National Cycle Info	Bus Times	PlusBus
BetterByBike.info Plan your bike journeys, find local cycle routes and much more.	walkwheelcycletrust.org.uk	www.travelwest.info Plan your journey, see bus routes and timetables, fares, travel updates and much more.	plusbus.info PlusBus is a discount price 'bus pass' that you buy with your train ticket. It gives you unlimited bus travel around your chosen town, on participating buses. Visit www.plusbus.info

National Rail Enquiries

Online	NRE App	Social Media	Alert Me	Contact Centre	PlusBike
nationalrail.co.uk	Free National Rail Enquiries app for iOS and Android	facebook.com/nationalrailenq @nationalrailenq	You can sign up to Alert Me messages on the National Rail Enquiries website where you can receive train and platform notifications directly to your smart phone. nationalrail.co.uk/alertme	03457 48 49 50 Calls cost no more than calls to geographic numbers (01 or 02) and may be recorded.	nationalrail.co.uk/plusbike For more information.

GWR | Great Western Railway

WESTlink



National Rail
Britain's train companies working together



This poster shows details of popular destinations and main, frequent bus routes. Additional services may run, so please check with Traveline or see posters at local bus stops. Whilst considerable care has been taken to ensure the information contained on this poster is correct and accurate, National Rail cannot accept responsibility for any loss or inconvenience caused by any errors or omissions, or for loss, damage, injury or inconvenience relating to the cancellation, alteration, delay or diversion of a service. For any feedback, please e-mail comments@onwardtravelposters.com

Scan this code with your mobile for full station information.