



Christchurch Station

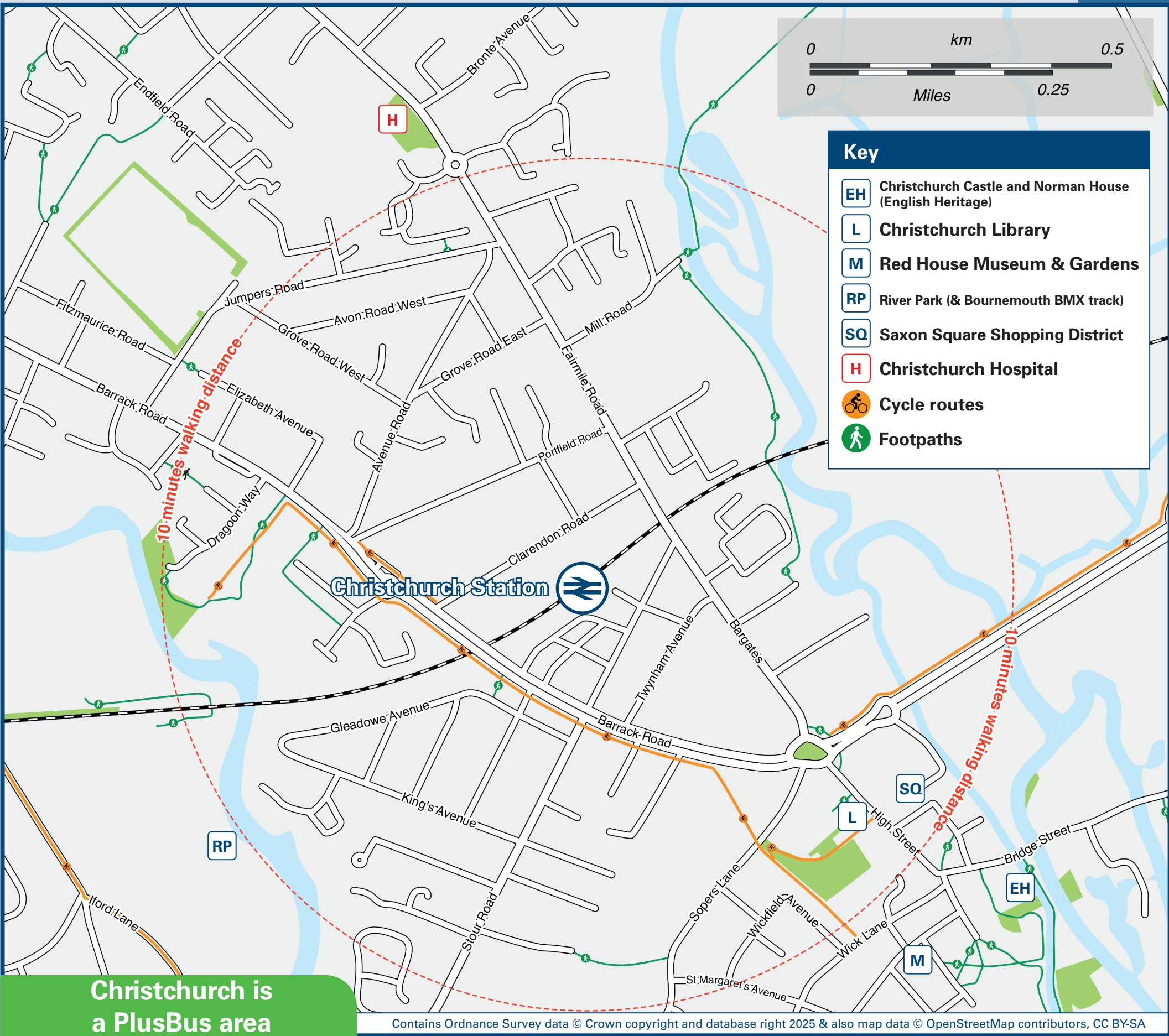
Onward Travel Information

Buses, Taxis and Cycle Hire



Rail replacement services from Stour Road bus stop outside of the station.

Local area map



Christchurch is a PlusBus area



Add **PlusBus** to your train ticket—now available on eTicket from leading rail ticketing apps—for unlimited bus travel in the **PlusBus** zone in your destination town or city. Visit www.plusbus.info

Main destinations by bus

(Data correct at December 2025)



DESTINATION	BUS ROUTES	BUS STOP
Barton-on-Sea	X1	C
Boscombe (Bus Station)	1b, 1c	B
	1a	F
Bournemouth	1b, 1c	B
	X1, X2	D
Burton	1a	F
	1b	A
Castlepoint	24#	D
Christchurch Hospital	24#, X1, X2	D
Christchurch (Town Centre)	1b, 1c	A
	24#, X1, X2	C
	1a	E
Everton	X1	C
Fairmile	24#, X1, X2	D
Highcliffe	X1, X2	C
Hordle	X2	C

DESTINATION	BUS ROUTES	BUS STOP
Iford	24#, X1, X2	D
	1a	F
Jumpers Common	24#, X1, X2	D
	1a	F
Littledown	24#, X1, X2	D
Lymington	X1, X2	C
Milford-on-Sea	X1	C
Mudford	1c	A
New Milton	X1, X2	C
Old Milton	X1	C
Pennington	X1, X2	C
Pokesdown	1b, 1c	B
	1a	F
	1b, 1c	A
Purewell	X1, X2	C
	1a	E
Royal Bournemouth Hospital	24#, X1, X2	D

DESTINATION	BUS ROUTES	BUS STOP
Somerford	1c	A
	X1, X2	C
Southbourne (Centre, Fishermans Walk, Shops)	1a	E
	1b, 1c	B
Stanpit	1c	B
St Catherine's Hill	24#	D
Tuckton Bridge	1b, 1c	B
Walkford	X2	C

Notes

- PlusBus** destination, please see below for details. Bus routes 1a, 1b, 1c and X1 run daily, Mondays to Sundays & Bank Holidays. Bus route X2 runs Mondays to Saturdays, only. No Sunday service. For bus times and days of operation please contact Traveline on www.traveline.info or call: 0871 200 22 33
- Direct trains operate to this destination from this Station.
- # Bus route 24 runs a limited daytime Mondays to Fridays service, only. No Evenings, Saturdays or Sundays service.
- Bike Hire beryl.cc/scheme/bournemouth-christchurch-and-pool

Taxis

Christchurch station is served by a taxi rank or cab office. Check availability before travelling, and pre-book if necessary. Please consider using the following local operators: (Inclusion of this number doesn't represent any endorsement of the taxi firm)

United Taxi's
01202 556 677

Christchurch Taxis
01202 150 880

Chritax
01202 470 000

Further information about all onward travel

Local Cycle Info	National Cycle Info	Bus Times	PlusBus
bcpcouncil.gov.uk For more information on cycle routes and local bikeshare scheme.	walkwheelcycletrust.org.uk	See timetable displays at bus stops. www.traveline.info 0871 200 22 33 calls cost 15p per minute plus your phone company's access charge	 plusbus.info PlusBus is a discount price 'bus pass' that you buy with your train ticket. It gives you unlimited bus travel around your chosen town, on participating buses. Visit www.plusbus.info



National Rail Enquiries

Online	NRE App	Social Media	Alert Me	Contact Centre	PlusBike
nationalrail.co.uk	Free National Rail Enquiries app for iOS and Android	facebook.com/nationalrailenq @nationalrailenq	You can sign up to Alert Me messages on the National Rail Enquiries website where you can receive train and platform notifications directly to your smart phone. nationalrail.co.uk/alertme	03457 48 49 50 Calls cost no more than calls to geographic numbers (01 or 02) and may be recorded.	nationalrail.co.uk/plusbike For more information.

South Western
Railway



National Rail
Britain's train companies working together

