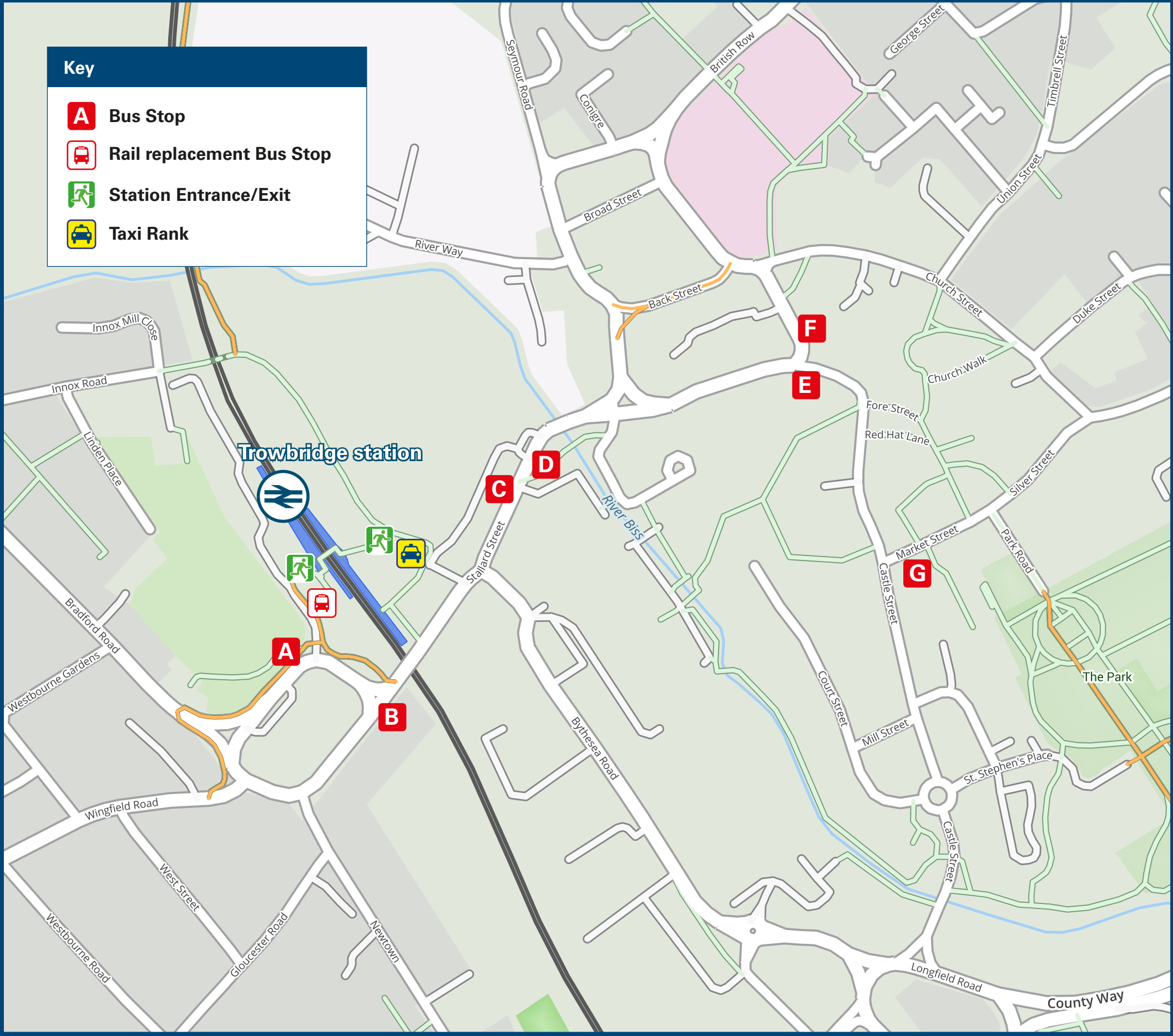




Trowbridge Station

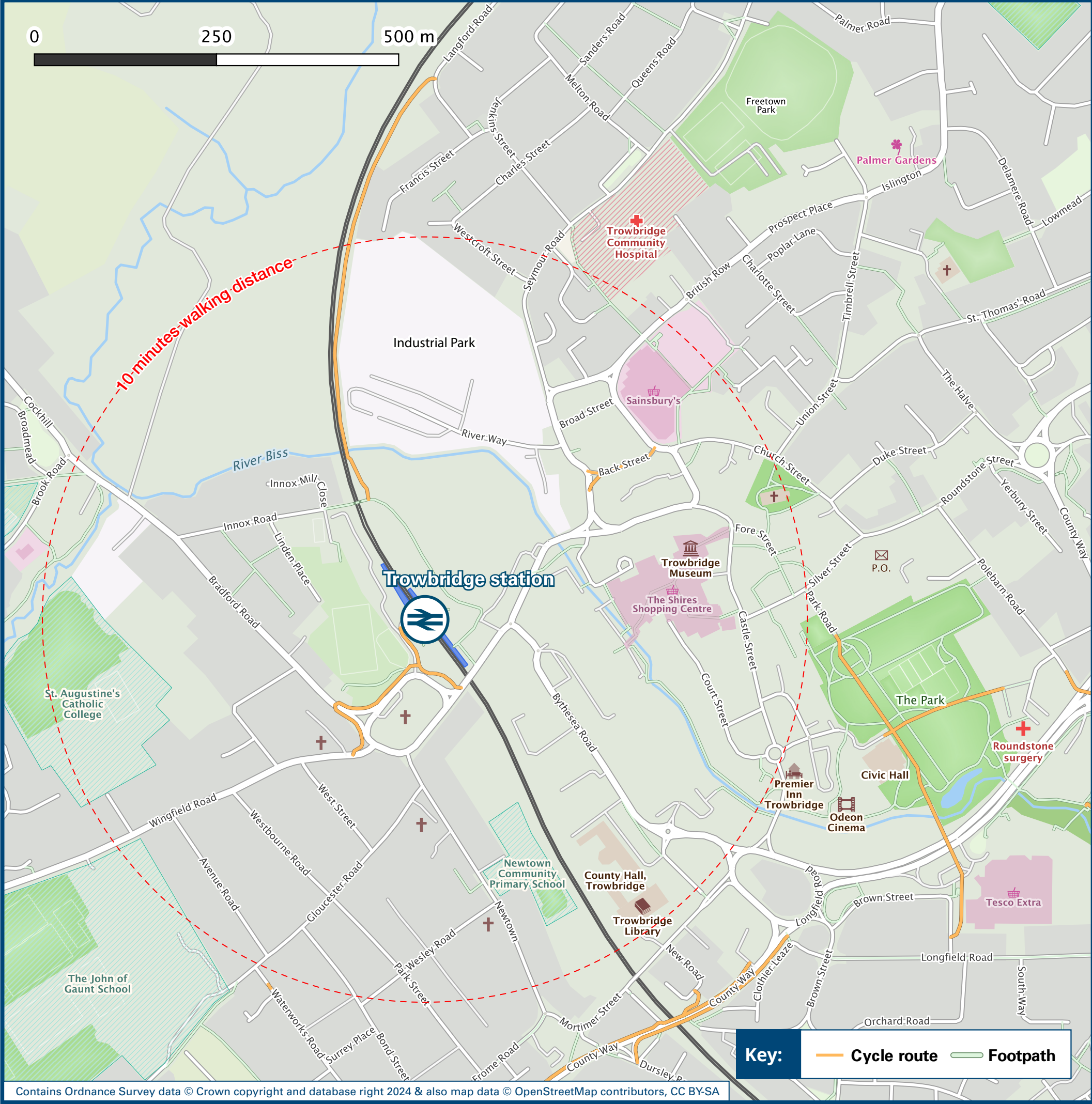
Onward Travel Information

Buses and Taxis



Rail replacement buses and coaches depart from the car park adjacent to Platform 1 (Booking Office side of Station)

Local area map



Main destinations by bus

(Data correct at January 2025)



DESTINATION	BUS ROUTES	BUS STOP
Bath City Centre	D1, D1x, 94*	B, D
Batheaston	D1x	B, D
Bathampton	D1	B, D
Beckington	X34	B, D
Bradford-on-Avon	D1, D1x, 69~	B, D
Bratton	87~	D
Chippenham	X34	A, C
Corsham	69~	B, D
Devizes	49	C
	87~	D
	76~, 77~	F
Erlestone	87~	D
Freshford	94*	B, D
Frome	X34	B, D
Great Cheverell	87~, 87A	D
Hawkeridge	D1	A, C
Heywood	87~	D
Holt	69~	B, D
Keevil	76~, 77~	F
Lacock	X34	A, C
Limpley Stoke	D1, 94*	B, D
Melksham	X34	A, C
	69~	B, D
North Bradley	D1	A, C
Oldford	X34	B, D
Rode	X34	B, D
Seend (and Seend Cleeve)	49	C

DESTINATION	BUS ROUTES	BUS STOP
Semington	X34	A, C
	49	C
Southwick	X34	B, D
Staverton	68A~	E
Steeple Ashton	76~, 77~	F
Trowbridge Town area		
- Bradley Road	D1	A, C
	87~	D
- Broadmead Estate	65*, 65A#	B, D
- Hilperton / Hilperton Marsh	X34	A, C
	68A~	E
- Paxcroft Mead	49	C
	X34	A, C
- Seymour Estate	68A~	E
- Spitfire Retail Park	D1	A, C
	87~	D
- Studley Green	60	D
	65A#	B, D
- The Down	63*	E
	X34	A, C
- Town Hall (Market Street)	10 minutes walk from this station (see maps)	
	65*, 65A#	
	69~, D1, D1x	A, C
- Trowle Common (Cock Hill)	D1, D1x, 69~	B, D
- Victoria Road	63*	E

DESTINATION	BUS ROUTES	BUS STOP
- White Horse Business Park	D1~(only calls here twice a day)	A, C
	87~	D
- Wiltshire College (Frome Road)	X34	B, D
- Wyke Road	X34	A, C
Warminster	D1	A, C
Westbury	D1	A, C
	87~	D
Westwood	94*, 96*	B, D
West Wilts Industrial Estate	D1	A, C
Winsley	D1	B, D
Worton	76~, 77~	F
Yarnbrook	D1	A, C

Notes

Bus routes 49, D1, D1x and X34 operate daily services. Further bus services are available from Trowbridge Town Hall bus stops on Market Street. For bus times and the latest bus service information, please contact Traveline www.traveline.info (or call: 0871 200 22 33)

☺ Direct trains operate to this destination from this station.

* Bus routes 63, 65, 94 and 96 operate limited daytime services, on Mondays to Fridays only.

Bus route 65A operates a limited daytime service, on Saturdays only.

~ Bus routes 68A, 69, 76 and 87 operate limited daytime services, on Mondays to Saturdays only.

Taxis

Trowbridge station is served by a taxi rank or cab office. Check availability before travelling, and pre-book if necessary. Please consider using the following local operators: (Inclusion of this number doesn't represent any endorsement of the taxi firm)

Alpha Taxis
01225 753 218

Eagle Taxis
07835 855 579

Mega Taxi Trowbridge
01225 435 345

Further information about all onward travel

Local Cycle Info	National Cycle Info	Bus Times	NextBuses	PlusBus
wiltshire.gov.uk For more information about cycle routes.	sustrans.org.uk Sustrans is the UK's leading sustainable transport charity.	See timetable displays at bus stops. www.traveline.info 0871 200 22 33 calls cost 10p per minute plus your phone company's access charge	Find the bus times for your stop. Search for a bus stop by entering a postcode, street & town or a stop name & town.	plusbus.info A discount price 'bus pass' that you buy with your train ticket. It gives you unlimited bus travel around your chosen town, on participating buses.

National Rail Enquiries

Online	NRE App	Social Media	Alert Me	Contact Centre	PlusBike
nationalrail.co.uk	Free National Rail Enquiries app for iOS and Android	facebook.com/nationalrailenq @nationalrailenq	You can sign up to Alert Me messages on the National Rail Enquiries website where you can receive train and platform notifications directly to your smart phone. nationalrail.co.uk/alertme	03457 48 49 50 Calls cost no more than calls to geographic numbers (01 or 02) and may be recorded.	nationalrail.co.uk/plusbike For more information.



National Rail
Britain's train companies working together



This poster shows details of popular destinations and main, frequent bus routes. Additional services may run, so please check with Traveline or see posters at local bus stops. Whilst considerable care has been taken to ensure the information contained on this poster is correct and accurate, National Rail cannot accept responsibility for any loss or inconvenience caused by any errors or omissions, or for loss, damage, injury or inconvenience relating to the cancellation, alteration, delay or diversion of a service. For any feedback, please e-mail comments@onwardtravelposters.com

Scan this code with your mobile for full station information.