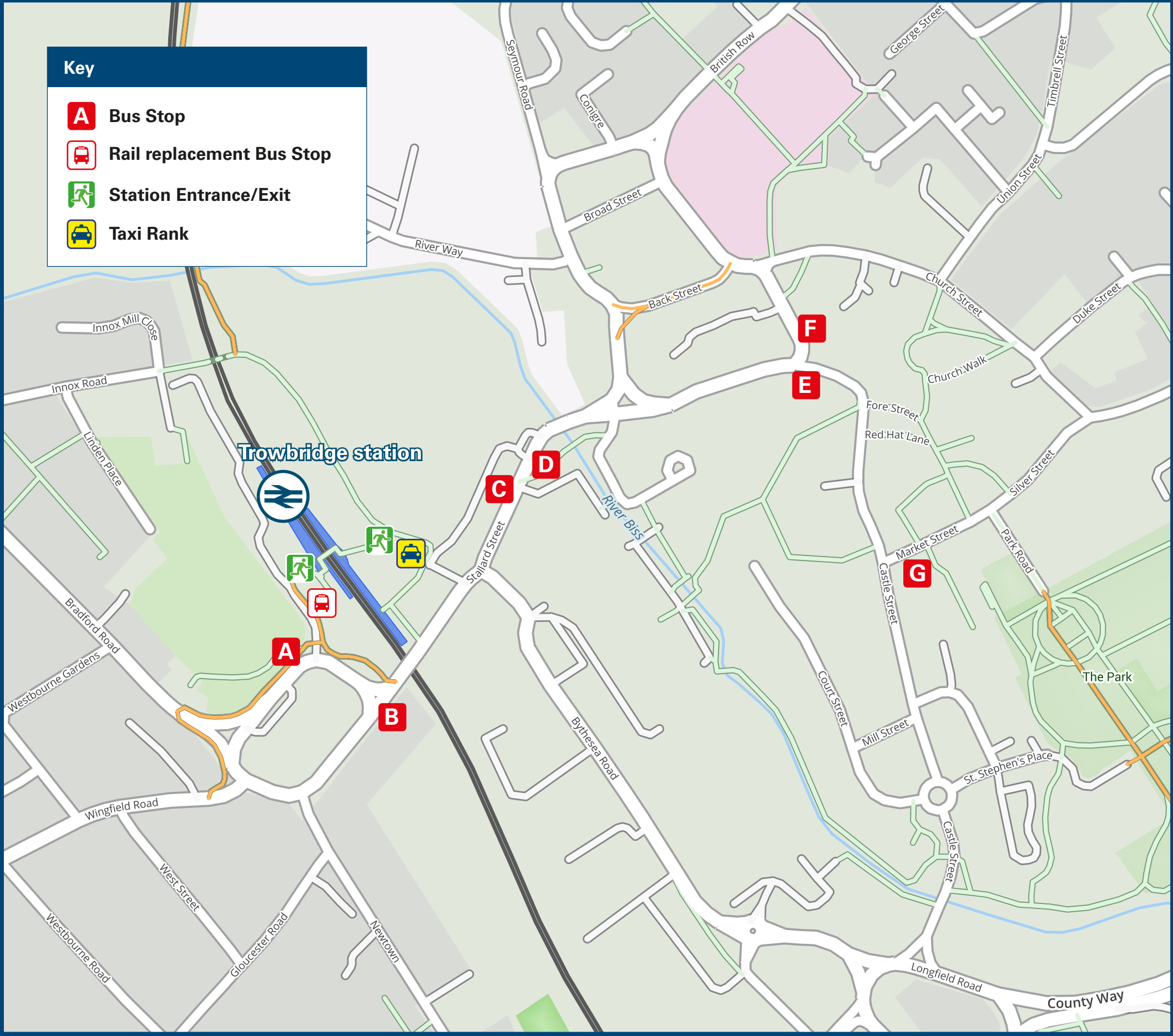




Trowbridge Station

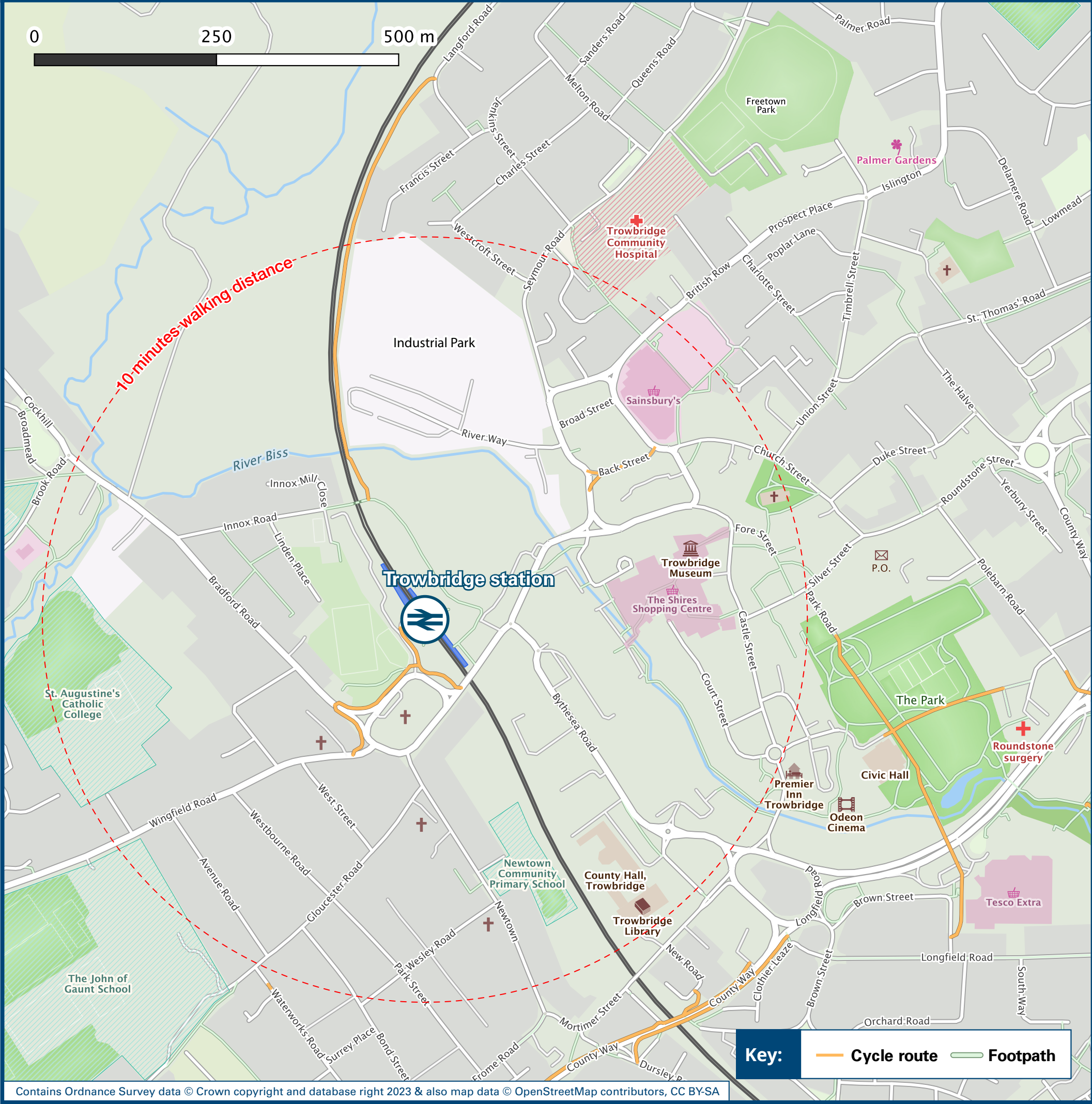
Onward Travel Information

Buses and Taxis



Rail replacement buses and coaches depart from the station car park, adjacent to platform 1.

Local area map



Main destinations by bus

(Data correct at November 2023)



DESTINATION	BUS ROUTES	BUS STOP
Bath City Centre	D1	B, D
Bathampton	D1	B, D
Beckington	X34	B, D
Bradford-on-Avon	D1, 69	B, D
Chippenham	X34	A, C
Corsham	69	B, D, E
Devizes	49	C
Freshford	94	B, D
Frome	X34 X47#	B, D G
Great Cheverell	87, 87A, 877*	D
Hawkeridge	D1	A, C
Heywood	87, 87A	D
Holt	69	B, D, E
Lacock	X34	A, C
Limpley Stoke	D1, 94	B, D
Melksham	X34 69	A, C B, D, E
North Bradley	D1 67, 67A, X47#	A, C G
Oldford	X34	B, D
Rode	X34	B, D
Seend (and Seend Cleeve)	49	C
Semington	X34 49	A, C C
Southwick	X34	B, D
Staverton	68A	E
Steeple Ashton	76, 77, 877*	F

DESTINATION	BUS ROUTES	BUS STOP
Trowbridge Town area		
- Bradley Road	D1 87, 87A	A, C D
- Broadmead Estate	65, 65A	B, D
- Green Lane, Lark Down & Paxcroft Way	66	G
- Hilperton / Hilperton Marsh	X34 68A	A, C E
- Longfield Estate	66	G
- Marston Road and Boundary Walk	60	D
- Paxcroft Mead	49	C
- Seymour Estate	X34 68A	A, C E
- Spitfire Retail Park	D1 87, 87A 67, 67A	A, C D G
- Studley Green	60, 960# 65A	D B, D
- The Down	63 X34	E A, C
- Town Hall (Market Street - stop G on map)	10 minutes walk from this station (see maps) D1, X34	A, C A, C
- Trowle Common (Cock Hill)	D1, 69	B, D
- Victoria Road	63	E
- White Horse Business Park	D1 87, 87A	A, C D
- Wiltshire College (Frome Road)	X34	B, D

DESTINATION	BUS ROUTES	BUS STOP
- Wyke Road	X34	A, C
Warminster	D1	A, C
Westbury	D1 87, 87A X47#	A, C D G
Westwood	94, 96 960#	B, D D
West Wilts Industrial Estate	D1	A, C
Winsley	D1	B, D
Worton	76, 77	F
Yarnbrook	D1	A, C

Notes

Bus route D1 operates daily.
Bus routes 49, 66, 67, 68A, 69, 76, 77, 87 and X34 operate Mondays to Saturdays.
Bus routes 60, 63, 65, 87A, 94, 96, 960 and X47 operate Mondays to Fridays only.
Bus routes 65A, 67A and 877 operate on Saturdays only.
For bus times and the latest bus service information, please contact Traveline on 0871 200 22 33.
Direct trains operate to this destination from this station.
* Bus route 877 operate 1 early evening bus on Saturdays only.
Bus routes 960 and X47 operate 1 early evening bus on Mondays to Fridays only.

Taxis

Trowbridge station is served by a taxi rank or cab office. Check availability before travelling, and pre-book if necessary. Please consider using the following local operators: (Inclusion of this number doesn't represent any endorsement of the taxi firm)

Alpha Taxis
01225 752 916 or 0800 371 297

Eagle Taxis
07835 855 579

Mega Taxi Trowbridge
01225 435 345

Further information about all onward travel

Local Cycle Info	National Cycle Info	Bus Times	NextBuses	PlusBus
wiltshire.gov.uk For more information about cycle routes.	sustrans.org.uk Sustrans is the UK's leading sustainable transport charity.	See timetable displays at bus stops. www.traveline.info 0871 200 22 33 calls cost 15p per minute plus your phone company's access charge	Find the bus times for your stop. Search for a bus stop by entering a postcode, street & town or a stop name & town.	plusbus.info A discount price 'bus pass' that you buy with your train ticket. It gives you unlimited bus travel around your chosen town, on participating buses.

National Rail Enquiries

Online	NRE App	Social Media	Alert Me	Contact Centre	PlusBike
nationalrail.co.uk	Free National Rail Enquiries app for iOS and Android	facebook.com/nationalrailenq @nationalrailenq	You can sign up to Alert Me messages on the National Rail Enquiries website where you can receive train and platform notifications directly to your smart phone. nationalrail.co.uk/alertme	03457 48 49 50 Calls cost no more than calls to geographic numbers (01 or 02) and may be recorded.	nationalrail.co.uk/plusbike For more information.



National Rail
Britain's train companies working together



This poster shows details of popular destinations and main, frequent bus routes. Additional services may run, so please check with Traveline or see posters at local bus stops. Whilst considerable care has been taken to ensure the information contained on this poster is correct and accurate, National Rail cannot accept responsibility for any loss or inconvenience caused by any errors or omissions, or for loss, damage, injury or inconvenience relating to the cancellation, alteration, delay or diversion of a service. For any feedback, please e-mail comments@onwardtravelposters.com

Scan this code with your mobile for full station information.