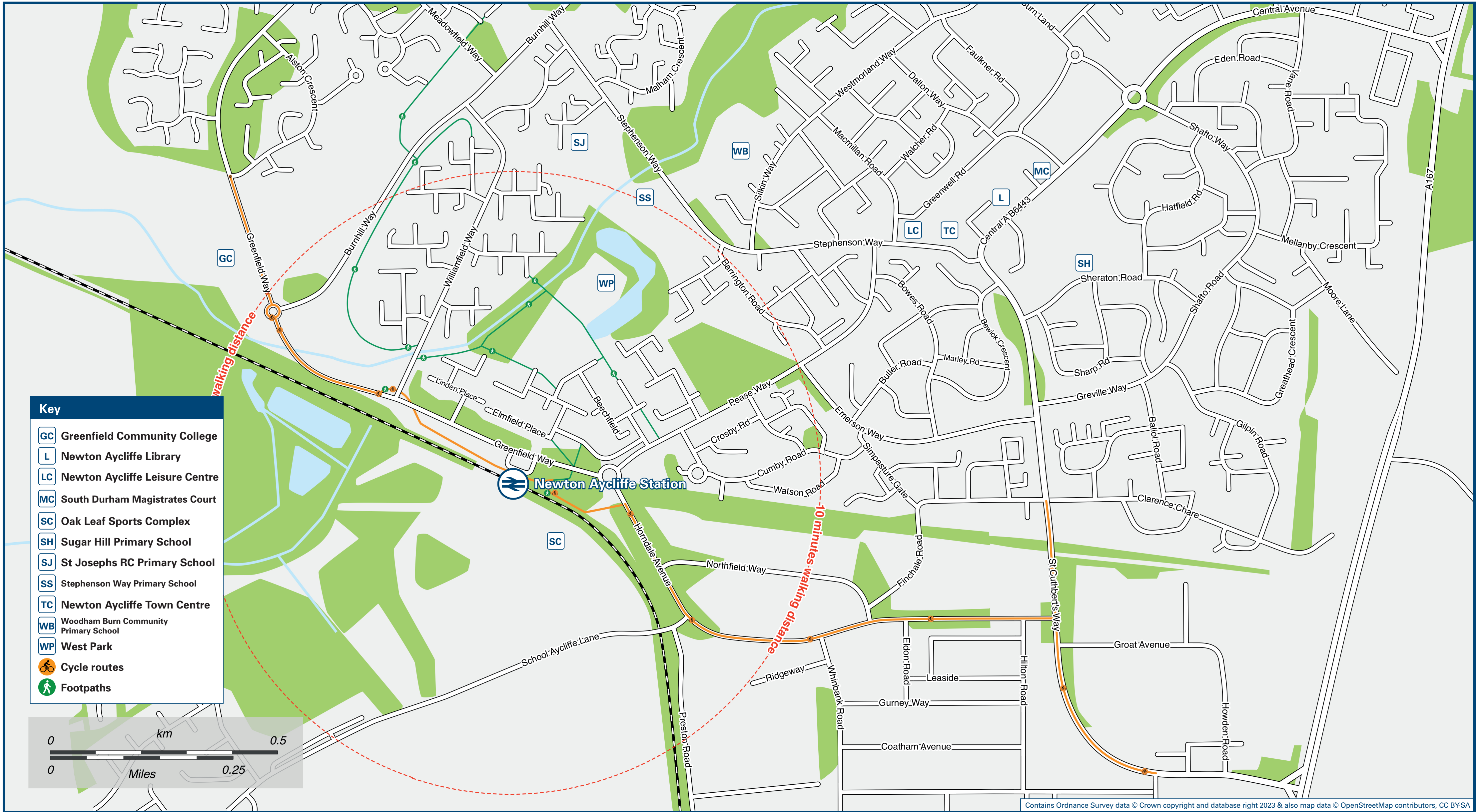




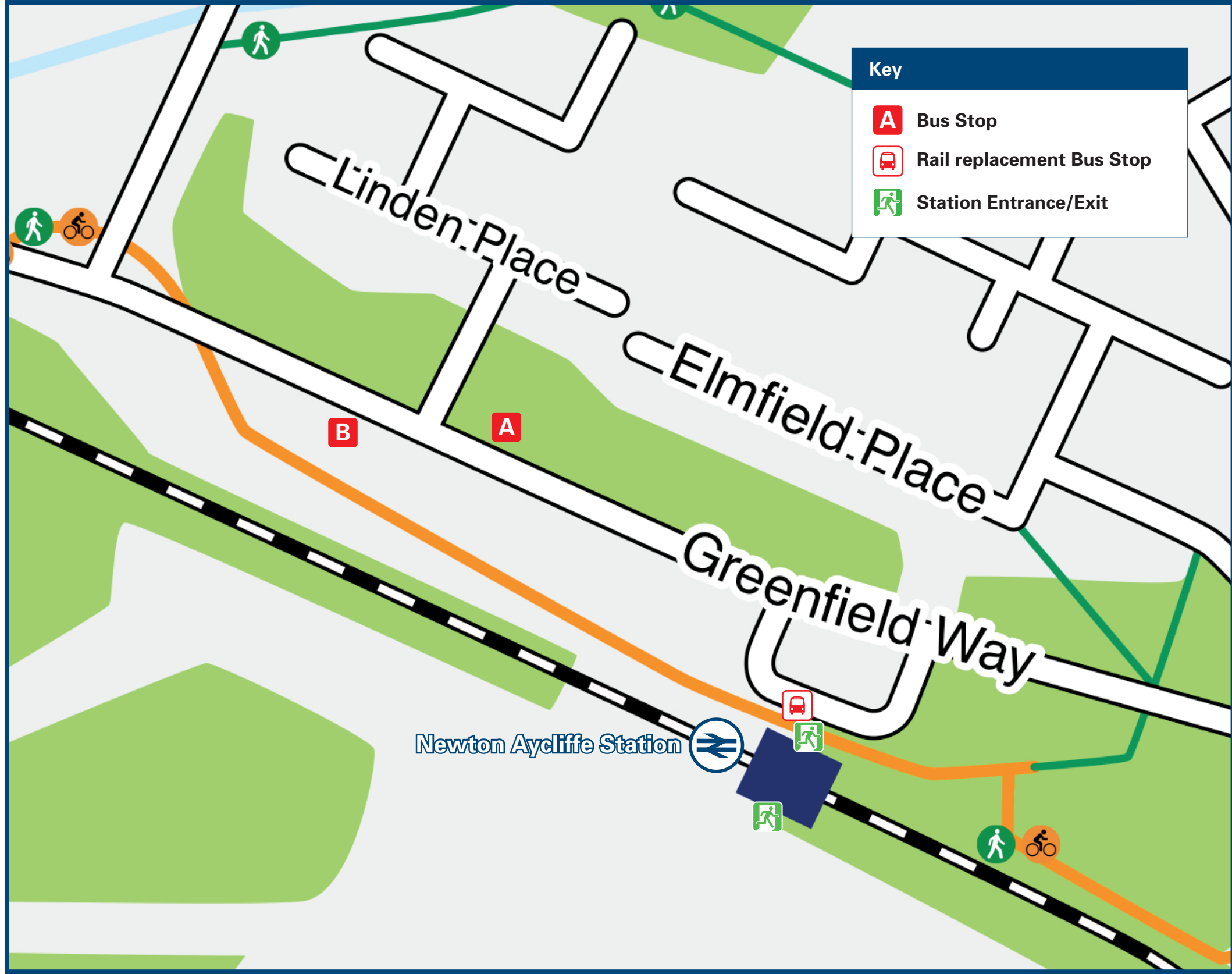
Newton Aycliffe Station

Onward Travel Information

Local area map



Buses



 Rail replacement buses will Pick Up / Drop off at station front layby.

Main destinations by bus

DESTINATION	BUS ROUTES	BUS STOP
Aycliffe Industrial Estate	5	A
Bishop Auckland General Hospital	5	B
Bishop Auckland Town Centre & Station	5	B
Darlington Town Centre	5	A
Harrowgate Hill	5	A
Middridge	5	B
Newton Aycliffe (Town Centre)	5	A
Shildon	5	B
Notes	Bus route 5 operates daily. For bus times please see bus stop timetables or contact Traveline Direct trains operate to this destination from Newton Aycliffe	

Taxis

Newton Aycliffe station has no taxi rank or cab office. Advance booking is essential, please consider using the following local operators: (Inclusion of this number doesn't represent any endorsement of the taxi firm)

Speedy Cab
01325 301 310

Star Cabs
01325 300 300

Able Novak Taxis
01325 311 111

Further information about all onward travel

Local Cycle Info durham.gov.uk For more information about cycle routes.	National Cycle Info sustrans.org.uk Sustrans is the UK's leading sustainable transport charity.	Bus Times See timetable displays at bus stops.  www.traveline.info 0871 200 22 33 calls cost 15p per minute plus your phone company's access charge	NextBuses    Find the bus times for your stop. Search for a bus stop by entering a postcode, street & town or a stop name & town.	PlusBus  plusbus.info A discount price 'bus pass' that you buy with your train ticket. It gives you unlimited bus travel around your chosen town, on participating buses.
---	---	--	---	---

National Rail Enquiries

Online nationalrail.co.uk	NRE App Free National Rail Enquiries app for iOS and Android	Social Media  facebook.com/nationalrailenq  @nationalrailenq	Alert Me You can sign up to Alert Me messages on the National Rail Enquiries website where you can receive train and platform notifications directly to your smart phone. nationalrail.co.uk/alertme	Contact Centre 03457 48 49 50 Calls cost no more than calls to geographic numbers (01 or 02) and may be recorded.	PlusBike  nationalrail.co.uk/plusbike For more information.
---	--	--	---	---	---



This poster shows details of popular destinations and main, frequent bus routes. Additional services may run, so please check with Traveline or see posters at local bus stops. Whilst considerable care has been taken to ensure the information contained on this poster is correct and accurate, National Rail cannot accept responsibility for any loss or inconvenience caused by any errors or omissions, or for loss, damage, injury or inconvenience relating to the cancellation, alteration, delay or diversion of a service. For any feedback, please e-mail comments@onwardtravelposters.com

Scan this code with your mobile for full station information.