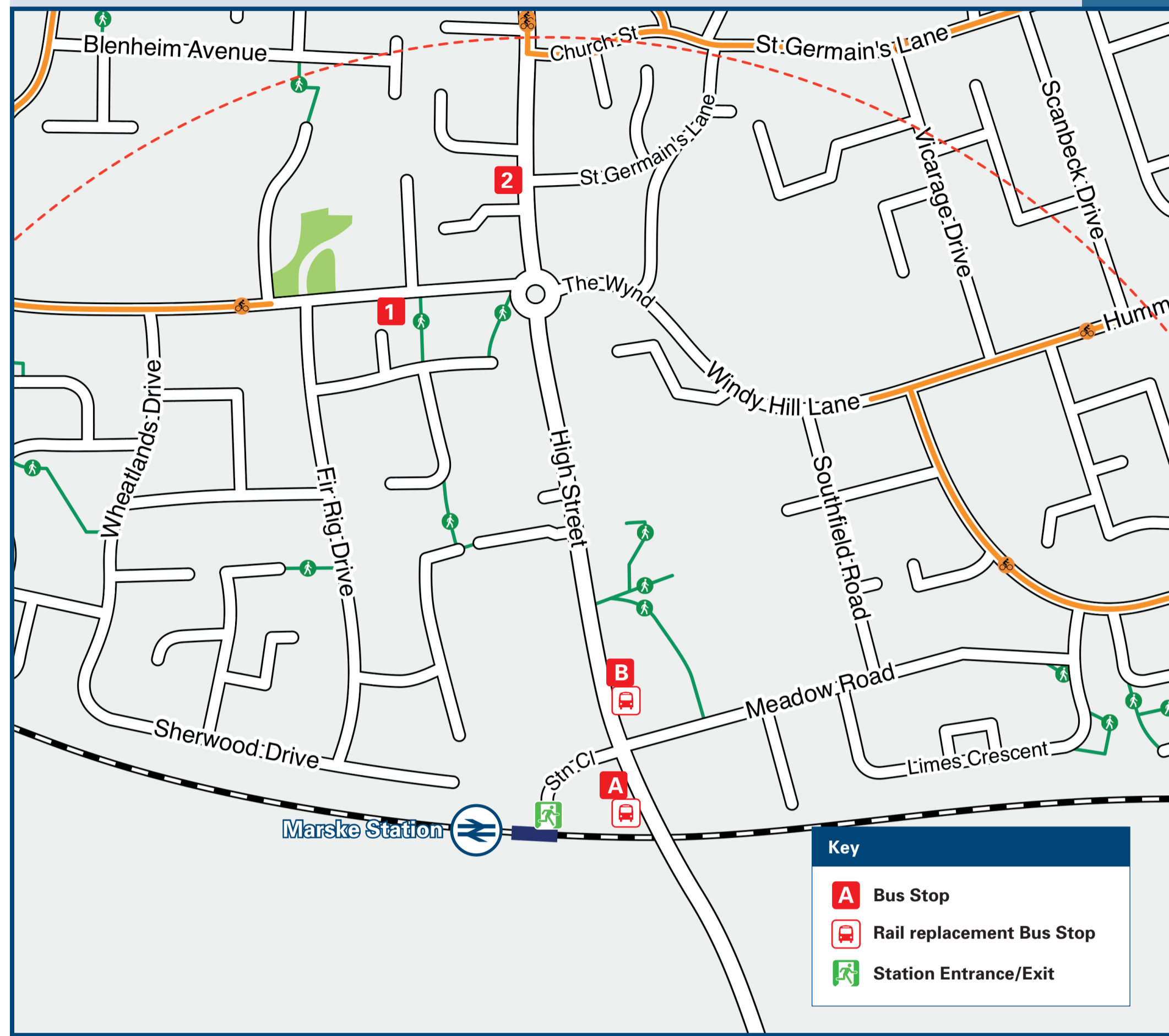




Marske Station

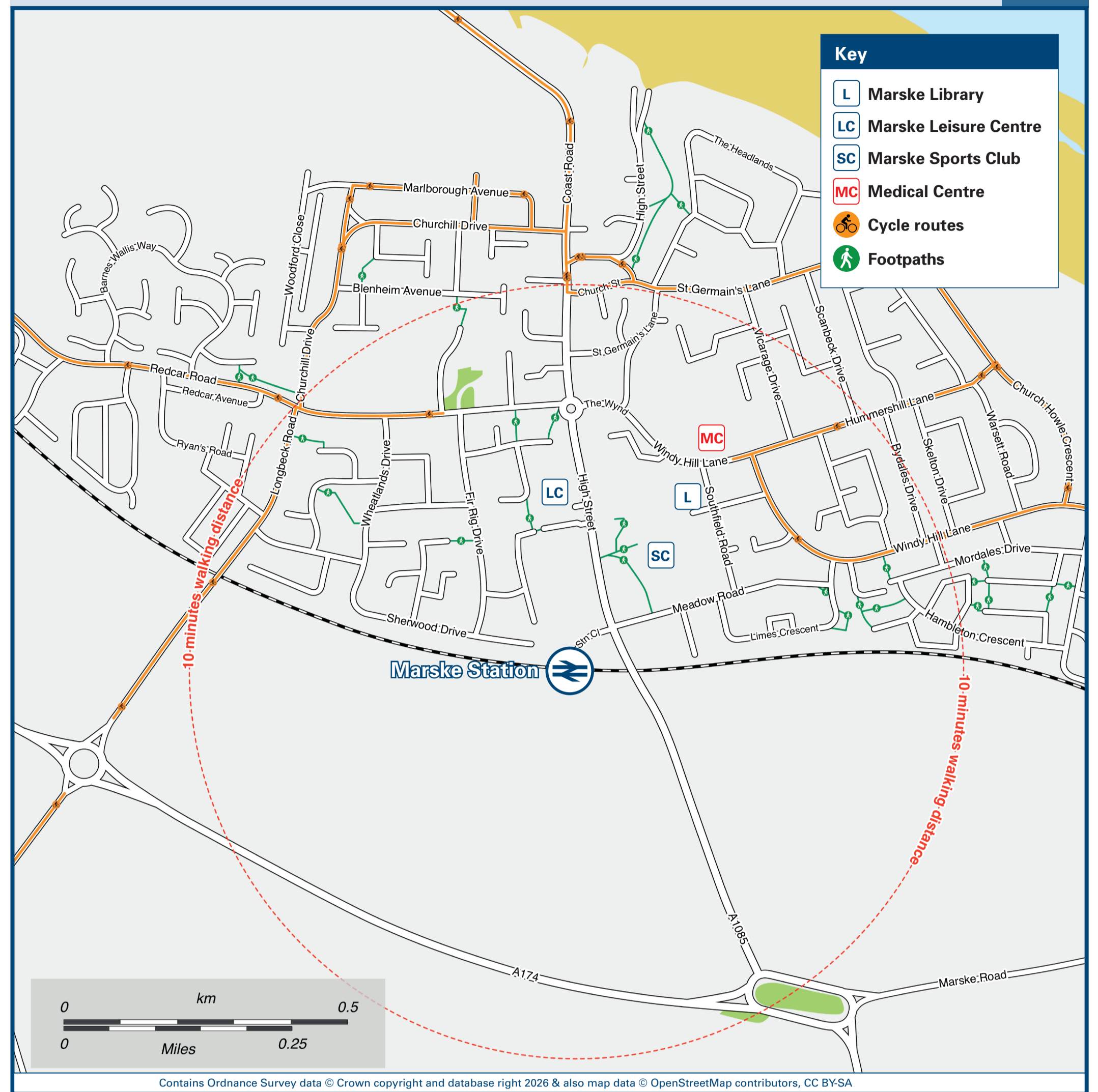
Onward Travel Information

Buses



Rail replacement buses Pick/Up Drop Off on High Street at the top of the Station Approach Road, station side for Middlesbrough, opposite side for Saltburn.

Local area map



Main destinations by bus

(Data correct at March 2026)

DESTINATION	BUS ROUTES	BUS STOP
Boosbeck	3*, X3	B
Brotton	X4, X4A#	B
Carlin How	X4, X4A#	B
Coatham	X3, X4, X4A#	A
	X2	1
Dormanstown	X3, X4, X4A#	A
	X2	1
Dunsdale	81	2
Easington	X4, X4A#	B
East Row	X4, X4A#	B
Ellerby	X4, X4A#	B
Guisborough	81	2
Hinderwell	X4, X4A#	B
Ings Farm Shops)	X3	A

DESTINATION	BUS ROUTES	BUS STOP
Kirkleatham Village	81	2
Lakes Estate	81	2
Lingdale	3*	B
Loftus	X4, X4A#	B
Lythe	X4, X4A#	B
Middlesbrough (Town Centre / Bus Station)	X3, X4, X4A#	A
	X2	1
New Marske	X2	1
New Skelton	3*	B
North Skelton	3*	B
Redcar (Town Centre)	3*, X3, X4, X4A#	A
	X2	1
	81, X4	2
Runswick Bay	X4, X4A#	B

DESTINATION	BUS ROUTES	BUS STOP
Saltburn	3*, X3, X4, X4A#	B
Sandsend	X4, X4A#	B
Skelton	3*, X3	B
Skelton Green	3*, X3	B
Staithe	X4, X4A#	B
Whitby	X4, X4A#	B
Yearby	81	2

Notes

Bus route X4 operates a daytime daily service.
 Bus routes 81, X2 & X3 operate daytime and early evenings services on Mondays to Saturdays, only.
 For bus times and days of operation please contact TraveLine on www.traveline.info or call: 0871 200 22 33

☉ Direct trains operate to this destination from Marske

* Bus route 3 operates a daytime service on Sundays and Bank Holidays, only.

Bus route X4A operates an evenings service every night, only. No daytime service.

Taxis Marske station has no taxi rank or cab office. Advance booking is essential, please consider using the following local operators: (Inclusion of this number doesn't represent any endorsement of the taxi firm)

Tommys Travel
07528 829 852

Frontline Taxis
01642 626 260

Red-Car Taxis
01642 470 470

Further information about all onward travel

Local Cycle Info For more information about cycle routes.	National Cycle Info walkwheelcycletrust.org.uk	Bus Times connectteesvalley.com <small>See timetable displays at bus stops.</small>	PlusBus plusbus.info PlusBus is a discount price 'bus pass' that you buy with your train ticket. It gives you unlimited bus travel around your chosen town, on participating buses. Visit www.plusbus.info
---------------------------------------------------------------------	----------------------------------------------------------------------------------------------------------	---------------------------------------------------------------------------------------------------------------------------------------------	-------------------------------------------------------------------------------------------------------------------------------------------------------------------------------------------------------------------------------------------------------------------------------------------------

National Rail Enquiries

Online nationalrail.co.uk	NRE App Free National Rail Enquiries app for iOS and Android	Social Media facebook.com/nationalrailenq @nationalrailenq	Alert Me You can sign up to Alert Me messages on the National Rail Enquiries website where you can receive train and platform notifications directly to your smart phone. nationalrail.co.uk/alertme	Contact Centre 03457 48 49 50 Calls cost no more than calls to geographic numbers (01 or 02) and may be recorded.	PlusBike nationalrail.co.uk/plusbike For more information.
-----------------------------------------------------------------------------	------------------------------------------------------------------------	-------------------------------------------------------------------------	-------------------------------------------------------------------------------------------------------------------------------------------------------------------------------------------------------------------------------------------------------------------	--------------------------------------------------------------------------------------------------------------------------------	--------------------------------------------------------------------------------------------------------------------------



This poster shows details of popular destinations and main, frequent bus routes. Additional services may run, so please check with TraveLine or see posters at local bus stops. Whilst considerable care has been taken to ensure the information contained on this poster is correct and accurate, National Rail cannot accept responsibility for any loss or inconvenience caused by any errors or omissions, or for loss, damage, injury or inconvenience relating to the cancellation, alteration, delay or diversion of a service. For any feedback, please e-mail comments@onwardtravelposters.com

Scan this code with your mobile for full station information.