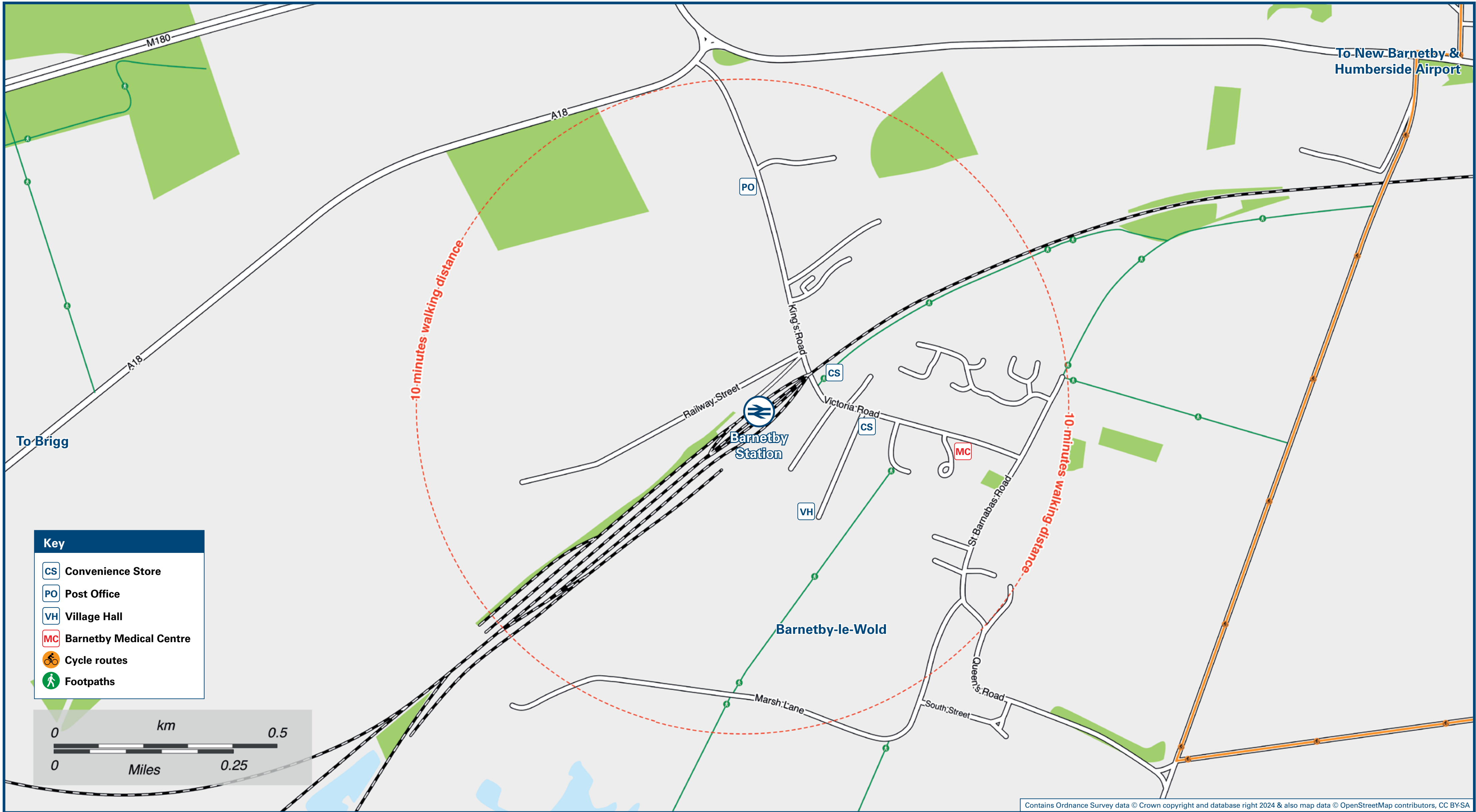




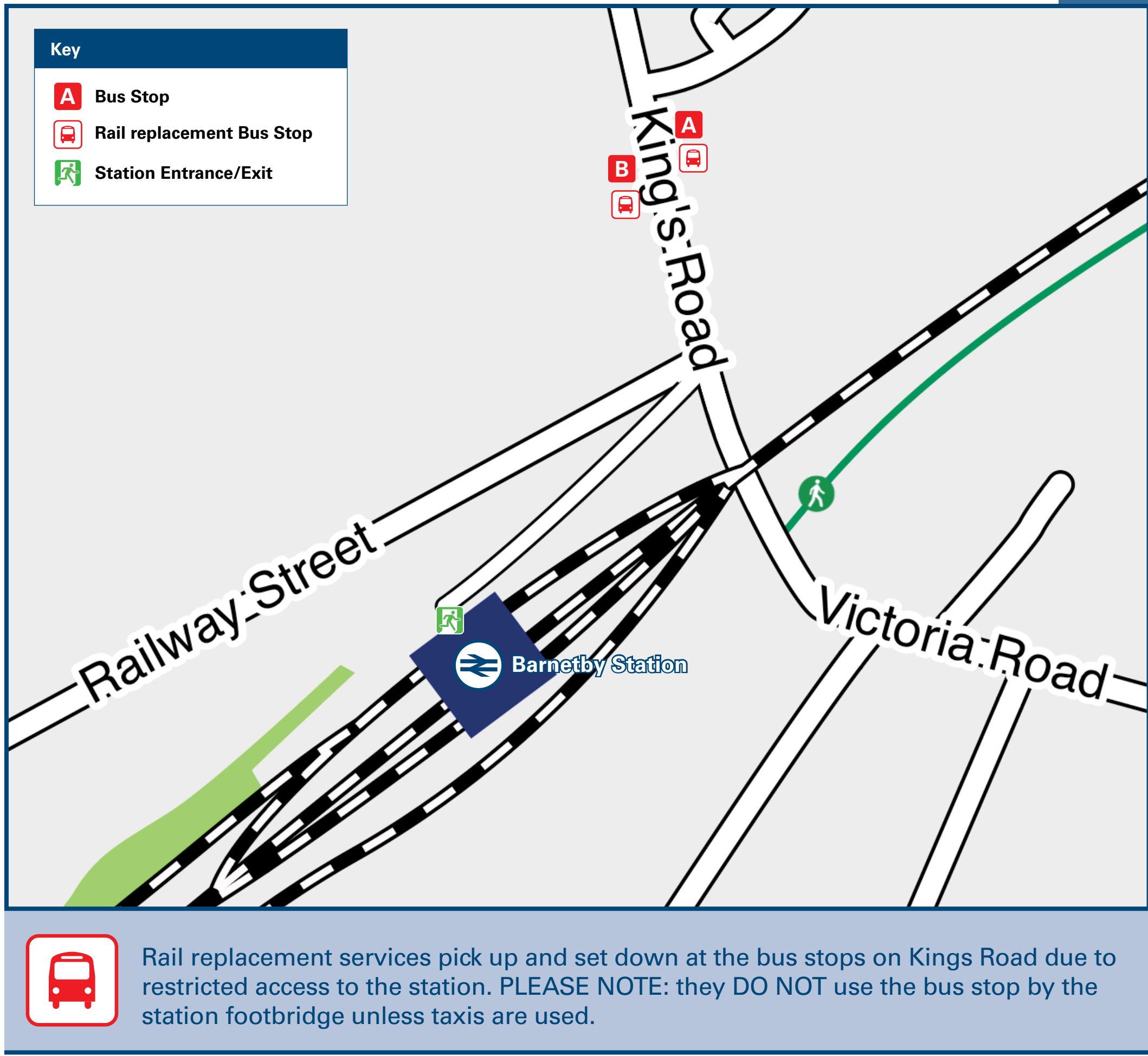
Barnetby Station

Onward Travel Information

Local area map



Buses



Main destinations by bus

(Data correct at September 2024)

DESTINATION	BUS ROUTES	BUS STOP
Ashby (Broadway)	4*	B
Bottesford (Timberland)	4*	B
Brigg (Cary Lane)	4*, C4+	B
Broughton	4*	B
Castlethorpe	4*	B
Hibaldstow	C4+	B
Humberside Airport	4*, C4+	A
Kirmington	4*, C4+	A
Kirton in Lindsey	C4+	B
Lakeside (Morrisons)	4*	B
Melton Ross	4*, C4+	A
Old Brumby (Brumby Corner)	4*	B
Redbourne	C4+	B
Scawby	C4+	B
Scunthorpe	4*	B
Sturton	C4+	B
Wrawby	4*, C4+	B
Wressle (Common Road)	4*	B

Notes

JustGo North Lincs is an on-demand bus service for people travelling in North Lincolnshire (including Barnetby) and available 7am to 7pm Mondays to Fridays and 8am to 6pm on Saturdays. To book download the JustGo North Lincs App with the Apple App Store or Google Play or by telephone on 01482 592 949 or see www.justgonorthlincs.co.uk/#go

For bus times and other bus service enquiries, please contact Traveline on 0871 200 22 33 or contact the bus operator: Hornsby Travel Services (for bus routes 4 & C4) call 01724 282255.

☺ Direct trains operate to Scunthorpe daily from this station.

☺ Limited trains operate to Brigg on Mondays to Fridays only from this station. It's then a 10 to 15 minutes walk to Brigg town centre.

* Bus route 4 operates Mondays to Fridays only.

+ Bus route C4 operates Saturdays only.

Taxis

Barnetby Station has no taxi rank or cab office. Advance booking is essential, please consider using the following local operators: (Inclusion of this number doesn't represent any endorsement of the taxi firm)

C L Private Hire
01652 656206

DJ's Taxis
01724 333 222

Further information about all onward travel

Local Cycle Info	National Cycle Info	Bus Times	NextBuses	PlusBus
northlincs.gov.uk For more information about cycle routes.	sustrans.org.uk Sustrans is the UK's leading sustainable transport charity.	See timetable displays at bus stops. www.traveline.info 0871 200 22 33 calls cost 12p per minute plus your phone company's access charge	Find the bus times for your stop. Search for a bus stop by entering a postcode, street & town or a stop name & town.	plusbus.info A discount price 'bus pass' that you buy with your train ticket. It gives you unlimited bus travel around your chosen town, on participating buses.

National Rail Enquiries

Online	NRE App	Social Media	Alert Me	Contact Centre	PlusBike
nationalrail.co.uk	Free National Rail Enquiries app for iOS and Android	facebook.com/nationalrailenq @nationalrailenq	You can sign up to Alert Me messages on the National Rail Enquiries website where you can receive train and platform notifications directly to your smart phone. nationalrail.co.uk/alertme	03457 48 49 50 Calls cost no more than calls to geographic numbers (01 or 02) and may be recorded.	nationalrail.co.uk/plusbike For more information.



National Rail
Britain's train companies working together



This poster shows details of popular destinations and main, frequent bus routes. Additional services may run, so please check with Traveline or see posters at local bus stops. Whilst considerable care has been taken to ensure the information contained on this poster is correct and accurate, National Rail cannot accept responsibility for any loss or inconvenience caused by any errors or omissions, or for loss, damage, injury or inconvenience relating to the cancellation, alteration, delay or diversion of a service. For any feedback, please e-mail comments@onwardtravelposters.com

Scan this code with your mobile for full station information.