



Penzance Station

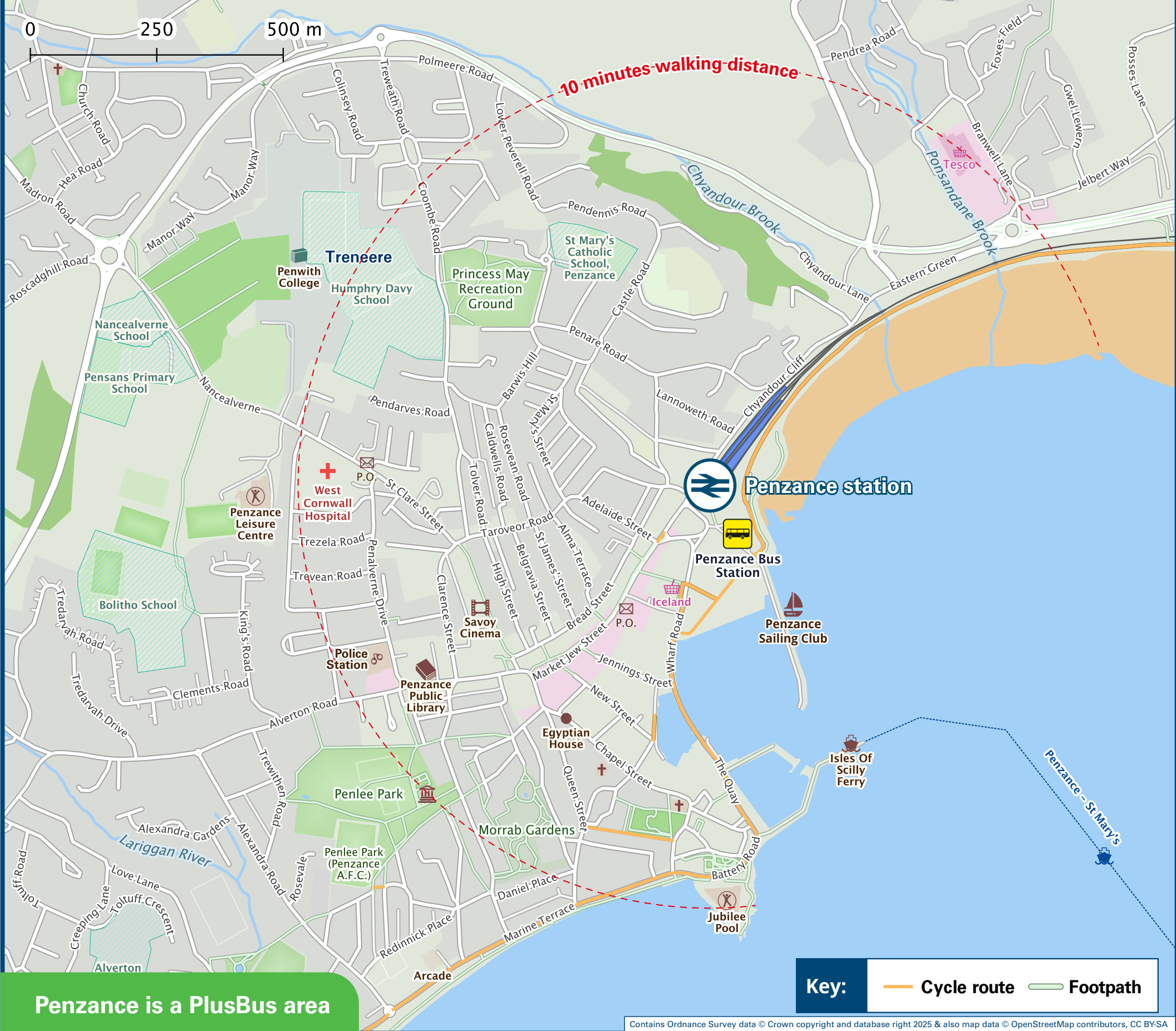
Onward Travel Information

Buses and Taxis



Rail replacement buses/coaches will depart from the Bus Station adjacent to the Station.

Local area map



Add **PlusBus** to your train ticket—now available on eTicket from leading rail ticketing apps—for unlimited bus travel in the **PlusBus** zone in your destination town or city. Visit www.plusbus.info

Main destinations by bus

(Data correct at January 2026)



DESTINATION	BUS ROUTES	BUS STOP
Ashton	2	E
Breage	2	E
Camborne	39A*	B
	18	F
Carbis Bay	17	C
Connor Downs	18	F
	1*	B
Crowlas	17	C
	18	F
Germoe	2	E
	39A*	B
Goldsithney	2	E
Grumbla	8*	C
Gulval	16	D
Gumard's Head	16A*	D
Gwallon	15*	A
Gwavas	1*, 1A*	B
	15*	A
Hayle	18	F
	4, 4A	C
Heamoor	16, 17E~	D
Helston	2	E
Lamorna Turn	1*	B
Lands End	1*, 1A*	B
Leedstown	39A*	B
Lelant	17	C
	15*	A
	39A*	B
Long Rock	8*, 17	C
	2	E
	18	F
Madron	4, 4A	C
	17E~	D
Marazion	15*	A
(for St Michael's Mount)	2	E

DESTINATION	BUS ROUTES	BUS STOP
Mousehole	6	A
Nanceledra	16	D
Newtown	2	E
	6	A
Newlyn (Bridge)	1*, 1A*	B
Paul	1*, 1A*	B
	6	A
Penzance (Town Centre)	1*, 1A*	B
	4, 4A, 8*	C
	17E~	D
Perran Downs	39A*	B
	2	E
Perranuthnoe	39A*	B
	2	E
Porthcurno	1A*	B
(for The Minack Theatre)		
Porthleven	2	E
Praa Sands	2	E
Reawla	39A*	B
Rosudgeon	39A*	B
	2	E
Sancreed	8*	C
Sennen/Sennen Cove	1*	B
Sheffield	1*, 1A*	B
St Buryan	1A*	B
	15*	A
St Erth (for Park & Ride)	17	C
	18	F
St Hilary	39A*	B
St Ives	17	C
	16, 16A*	D
St Just	4, 4A	C
	17E~	D
Townshend	39A*	B
Treen	1A*	B

DESTINATION	BUS ROUTES	BUS STOP
Trethewey	1A*	B
	8*	C
West Cornwall Hospital	16, 16A*	D
Zennor	16A*	D

Notes

- PlusBus** destination, please see below for details.
- Bus routes 6 & 17 operates a daily service.
- Bus routes 2, 16 & 18 operate services on Mondays to Saturdays, only. No Sunday services.
- PLUSBUS tickets are valid within the Penzance PLUSBUS zone on all bus routes.
- For bus times and days of operation please see bus timetables at the Bus Station adjacent to this station, or please contact Traveline on www.traveline.info or call: 0871 200 22 33.
- Direct trains operate from this Station to this destination.
- Direct and connecting trains operate to this destination from this station.
- * Bus routes 1, 1A, 8, 15, 16A, 17A & 39A operate limited daytime services on Mondays to Saturdays, only. No evenings or Sundays service.
- # To this destination bus route U4 runs calls at the main road, but not in Perranuthnoe Village.
- ~ Bus route 17E operates a service on Monday to Saturday evenings, only.



Taxis

Penzance station is served by a taxi rank or a cab office. Check availability before travelling, and pre-book if necessary. Please consider using the following local operators: (Inclusion of this number doesn't represent any endorsement of the taxi firm)

Stones Taxis
01736 363 400

Penzance Taxi Co
01736 888 888

Daves Taxis
01736 368 668

Further information about all onward travel

Local Cycle Info	National Cycle Info	Bus Times	PlusBus
cornwall.gov.uk For more information about cycle routes.	walkwheelcycletrust.org.uk	See timetable displays at bus stops. www.traveline.info 0871 200 22 33 calls cost 12p per minute plus your phone company's access charge	 plusbus.info PlusBus is a discount price 'bus pass' that you buy with your train ticket. It gives you unlimited bus travel around your chosen town, on participating buses. Visit www.plusbus.info

National Rail Enquiries

Online	NRE App	Social Media	Alert Me	Contact Centre	PlusBike
nationalrail.co.uk	Free National Rail Enquiries app for iOS and Android	facebook.com/nationalrailenq @nationalrailenq	You can sign up to Alert Me messages on the National Rail Enquiries website where you can receive train and platform notifications directly to your smart phone. nationalrail.co.uk/alertme	03457 48 49 50 Calls cost no more than calls to geographic numbers (01 or 02) and may be recorded.	nationalrail.co.uk/plusbike For more information.



National Rail
Britain's train companies working together



This poster shows details of popular destinations and main, frequent bus routes. Additional services may run, so please check with Traveline or see posters at local bus stops. Whilst considerable care has been taken to ensure the information contained on this poster is correct and accurate, National Rail cannot accept responsibility for any loss or inconvenience caused by any errors or omissions, or for loss, damage, injury or inconvenience relating to the cancellation, alteration, delay or diversion of a service. For any feedback, please e-mail comments@onwardtravelposters.com

Scan this code with your mobile for full station information.