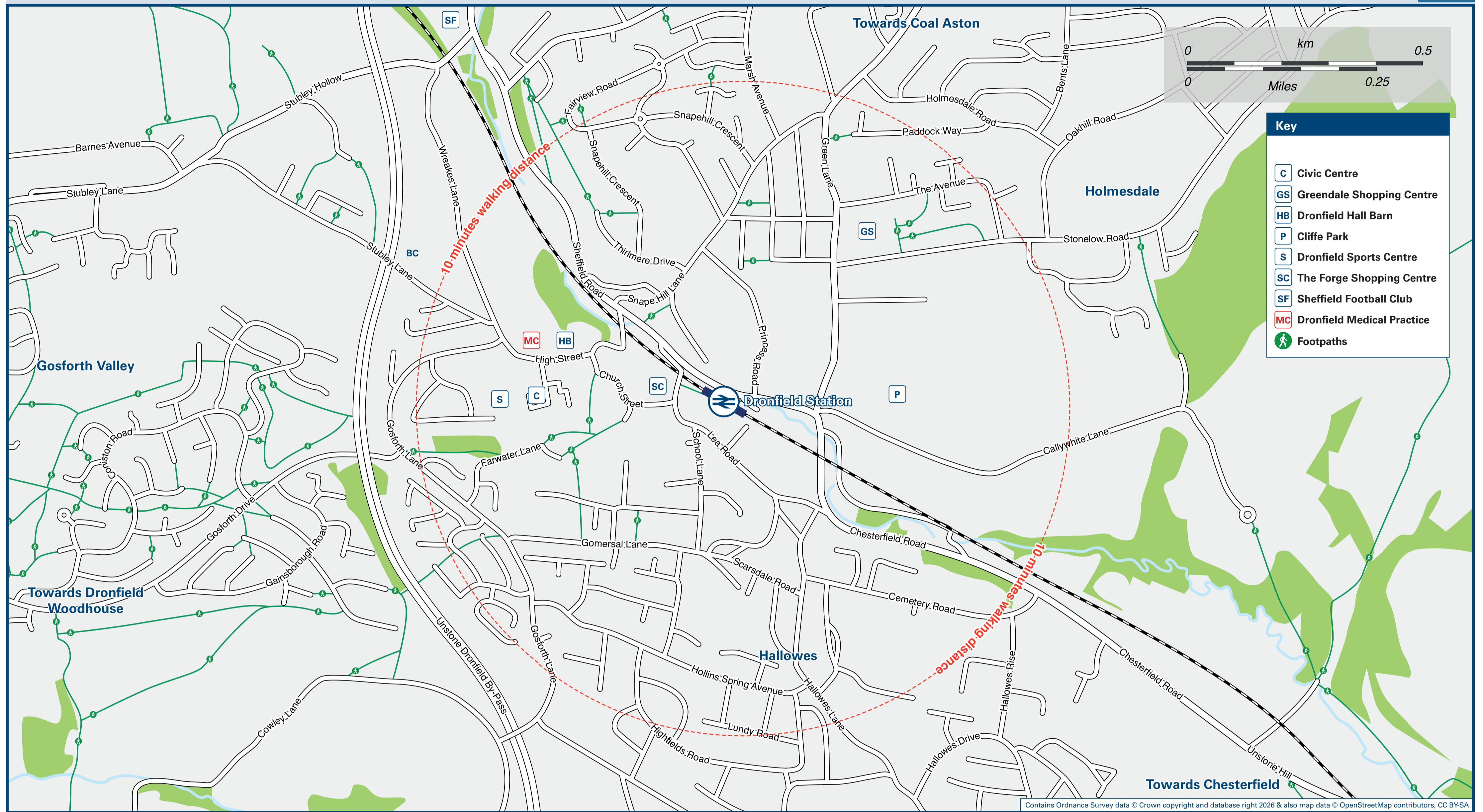




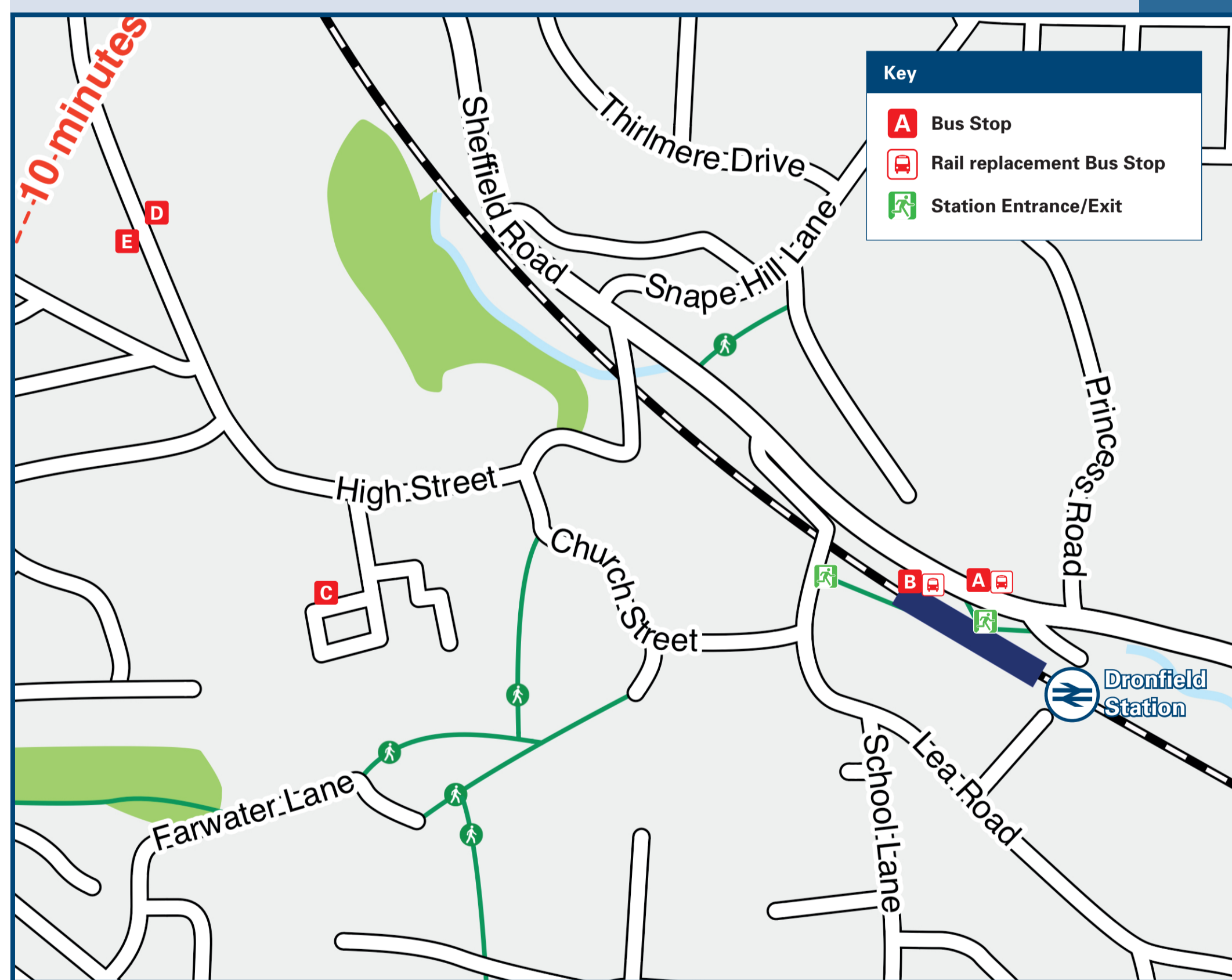
# Dronfield Station

# Onward Travel Information

## Local area map



## Buses



Rail replacement buses Pick Up / Drop Off at service bus stops on both sides of the main road at the front of the station (Chesterfield Road B6057). Turning circle is for local buses only.

## Main destinations by bus

(Data correct at February 2026)

DESTINATION	BUS ROUTES	BUS STOP
Apperknowle	15#	A
Barlow (Comonside)	16#	C
Coal Aston	15#	A
Cutthorpe	44	B
Dronfield (Civic Centre)	16#	C
Dronfield Woodhouse	15#	B
Gosforth Flyover	16#	C
Hill Top (Hollins Spring Avenue)	43	D
Holmesdale (Shops)	43	D
Holmesfield	15#	A
Jordanthorpe	44	B
Marsh Lane	16#	C
Millthorpe Village	15#	A
Old Whittington	16#	C
Sheepbridge	43	D
Unstone Green	44	B
Upper Newbold	15#, 44	A
Whittington Moor	43	D
Woodseats	44	B
	43	E

### Notes

Bus routes 43 and 44 operate daily services, Mondays to Sundays.  
 For bus times and days of operation please contact Traveline on [www.traveline.info](http://www.traveline.info) or call: 0871 200 22 33  
 It's a 10 minutes walk from this station to Dronfield Civic Centre, see maps for walking route.  
 # Bus routes 15 and 16 operate limited daytime services on Mondays to Saturdays only. No evenings or Sundays services.

## Taxis

Dronfield station has no taxi rank or cab office. Advance booking is essential, please consider using the following local operators: (Inclusion of this number doesn't represent any endorsement of the taxi firm)

**Geoff's Private Hire**  
01246 418 310

**A-Line Taxis Chesterfield**  
01246 555 555

**Door2Door Taxis**  
01246 202 020

## Further information about all onward travel

<b>Local Cycle Info</b> <a href="http://nederbyshire.gov.uk">nederbyshire.gov.uk</a> For more information about cycle routes.	<b>National Cycle Info</b> <a href="http://walkwheelcycletrust.org.uk">walkwheelcycletrust.org.uk</a>	<b>Bus Times</b> See timetable displays at bus stops. <a href="http://www.traveline.info">www.traveline.info</a> 0871 200 22 33 call cost 12p per minute plus your phone company's access charge	<b>PlusBus</b> <a href="http://plusbus.info">plusbus.info</a> PlusBus is a discount price 'bus pass' that you buy with your train ticket. It gives you unlimited bus travel around your chosen town, on participating buses. Visit <a href="http://www.plusbus.info">www.plusbus.info</a>
---	--	--	---

## National Rail Enquiries

<b>Online</b> <a href="http://nationalrail.co.uk">nationalrail.co.uk</a>	<b>NRE App</b> Free National Rail Enquiries app for iOS and Android	<b>Social Media</b> facebook.com/nationalrailenq @nationalrailenq	<b>Alert Me</b> You can sign up to Alert Me messages on the National Rail Enquiries website where you can receive train and platform notifications directly to your smart phone. <a href="http://nationalrail.co.uk/alertme">nationalrail.co.uk/alertme</a>	<b>Contact Centre</b> 03457 48 49 50 Calls cost no more than calls to geographic numbers (01 or 02) and may be recorded.	<b>PlusBike</b> <a href="http://nationalrail.co.uk/plusbike">nationalrail.co.uk/plusbike</a> For more information.
---	--	---	---	--	--



This poster shows details of popular destinations and main, frequent bus routes. Additional services may run, so please check with Traveline or see posters at local bus stops. Whilst considerable care has been taken to ensure the information contained on this poster is correct and accurate, National Rail cannot accept responsibility for any loss or inconvenience caused by any errors or omissions, or for loss, damage, injury or inconvenience relating to the cancellation, alteration, delay or diversion of a service. For any feedback, please e-mail [comments@onwardtravelposters.com](mailto:comments@onwardtravelposters.com)

Scan this code with your mobile for full station information.