



Hertford North Station

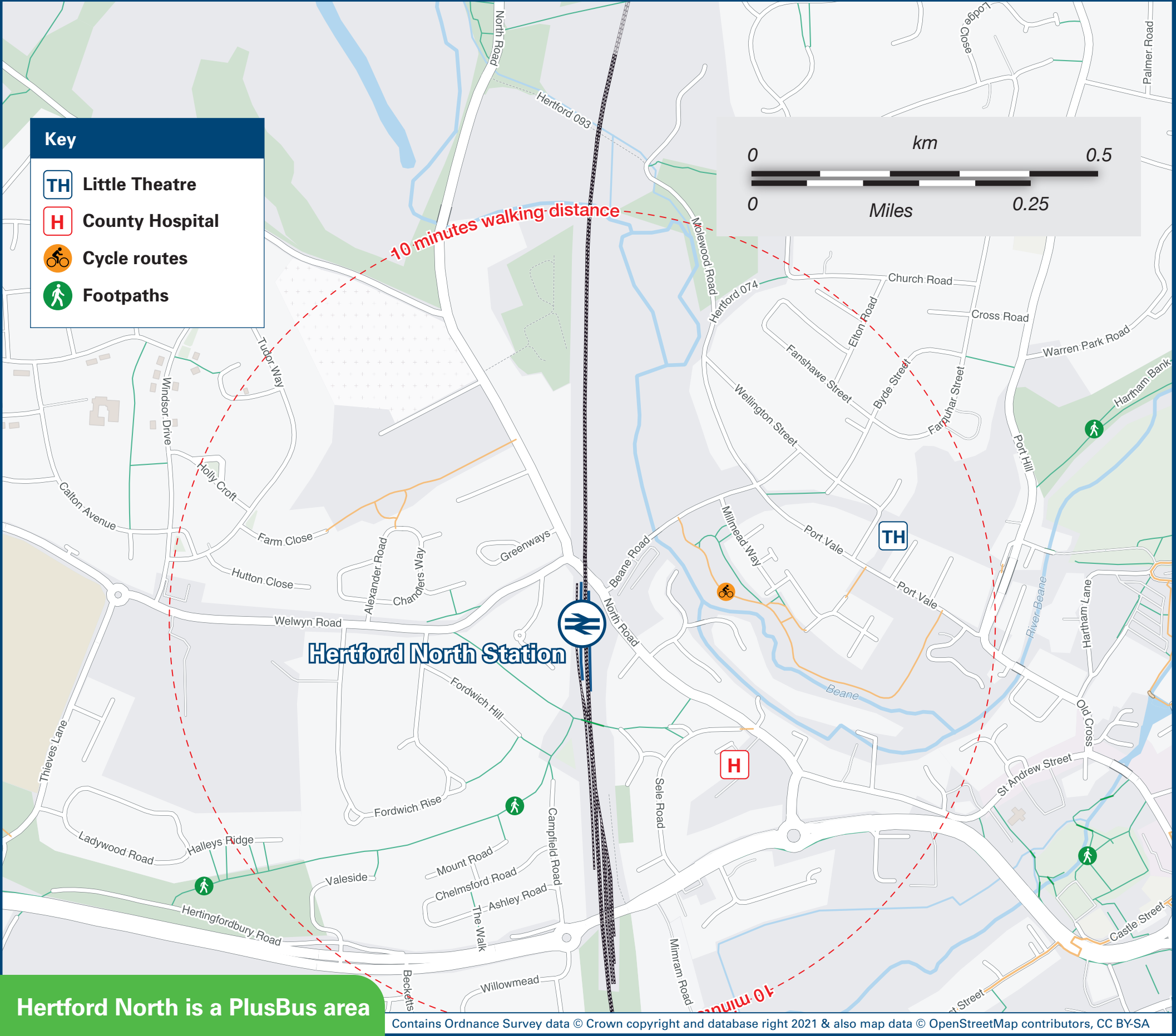
Onward Travel Information

Buses and Taxis



Rail replacement bus stop for buses towards Cuffley, Enfield and central London from stop A, also towards Stevenage from stop B, outside the station entrance, on North Road.

Local area map



PlusBus is a discount price 'bus pass' that you buy with your train ticket. It gives you unlimited bus travel around your chosen town, on participating buses. Visit www.plusbus.info

Main destinations by bus

(Data correct at May 2023)



DESTINATION	BUS ROUTES	BUS STOP
Birch Green	641	B
Broxbourne	641	A
Cheshunt	310, 341, 641	Bus Station
Essendon	310	Bus Station
Great Amwell	724	A
Harlow	310, 351	Bus Station
Hatfield Business Centre	641	B
Hatfield (Town Centre & The Galleria)	341	Bus Station
Hatfield (University of Hertfordshire) #	641, 724	B
Heathrow Airport	341	Bus Station
Hertford	724	B
- Bengeo	324, 395	A
- Foxholes	390	B
- Hertford East Station**	333	Bus Station
- Molewood	395	A
- Pinehurst	333	Bus Station
- Sele Farm	395	B

DESTINATION	BUS ROUTES	BUS STOP
Hertford Heath	641	A
Hertingfordbury	341	Bus Station
Huddesdon	641	B
Horns Mill	641	A
Lister Hospital	310, 341, 641	Bus Station
Panshanger	H4*	B
Poplars (Coopers Inn)	341, H4	Bus Station
QEII Hospital (Welwyn Garden City)	390	B
St Albans (City Centre & City Station)	324, 724	B
St Margarets	390	B
Stapleford	724	B
Stevenage	310, 351	Bus Station
Waltham Cross (Bus Station)	390	B
	310	Bus Station

DESTINATION	BUS ROUTES	BUS STOP
Ware	390, 395, 724	A
Waterford	310, 331, 351	Bus Station
Watford (serves Watford Junction Station)	390	B
Watton-at-Stone	724	B
Welwyn Garden City	390	B
Woollensbrook	324, 724	B
Wormley	341, 641	Bus Station
	310	Bus Station

Notes

Bus routes 341, 390, 641 and H2 run Mondays to Saturdays, only. No Sunday services.

Bus routes 310, 324, 333, 395, 724 and H4 run daily services.

For bus times and days of operation please see bus stop timetables or contact Traveline.

* Bus route H4 operates Monday to Friday, mornings only to this destination.

** Alternatively take any bus to Hertford Bus Station, from where it's a 5 - 10 minutes walk to Hertford East Station.

Bus routes 341 & 641 serve The Forum, College Lane and de Havilland campuses. Route 724 stops on the main road a short walk to both campuses.

Change here for connecting domestic and international airline services.

Change here for connecting National Rail services.

Direct trains operate from Hertford East station to this destination (see above how to get to Hertford East station from here)

Direct trains operate to this destination from this station.

Taxis

Hertford North station is served by a taxi rank or a cab office. Check availability before travelling, and pre-book if necessary. Please consider the following local operators: (Inclusion of this number doesn't represent any endorsement of the taxi firm)

Foxholes Car Service
01992 500 750

Oz Cabs Taxi Hertford
01992 842 414

Hertsline Cars
01992 500 500

Further information about all onward travel

Local Cycle Info	National Cycle Info	Bus Times	NextBuses	PlusBus
east-herts.gov.uk For more information about cycle routes.	sustrans.org.uk Sustrans is the UK's leading sustainable transport charity.	See timetable displays at bus stops. www.traveline.info 0871 200 22 33 calls cost 15p per minute plus your phone company's access charge	Find the bus times for your stop. Search for a bus stop by entering a postcode, street & town or a stop name & town. www.nextbuses.com	plusbus.info A discount price 'bus pass' that you buy with your train ticket. It gives you unlimited bus travel around your chosen town, on participating buses.

National Rail Enquiries

Online	NRE App	Social Media	Alert Me	Contact Centre	PlusBike
nationalrail.co.uk	Free National Rail Enquiries app for iOS and Android	facebook.com/nationalrailenq @nationalrailenq	You can sign up to Alert Me messages on the National Rail Enquiries website where you can receive train and platform notifications directly to your smart phone. nationalrail.co.uk/alertme	03457 48 49 50 Calls cost no more than calls to geographic numbers (01 or 02) and may be recorded.	nationalrail.co.uk/plusbike For more information.



National Rail
Britain's train companies working together

