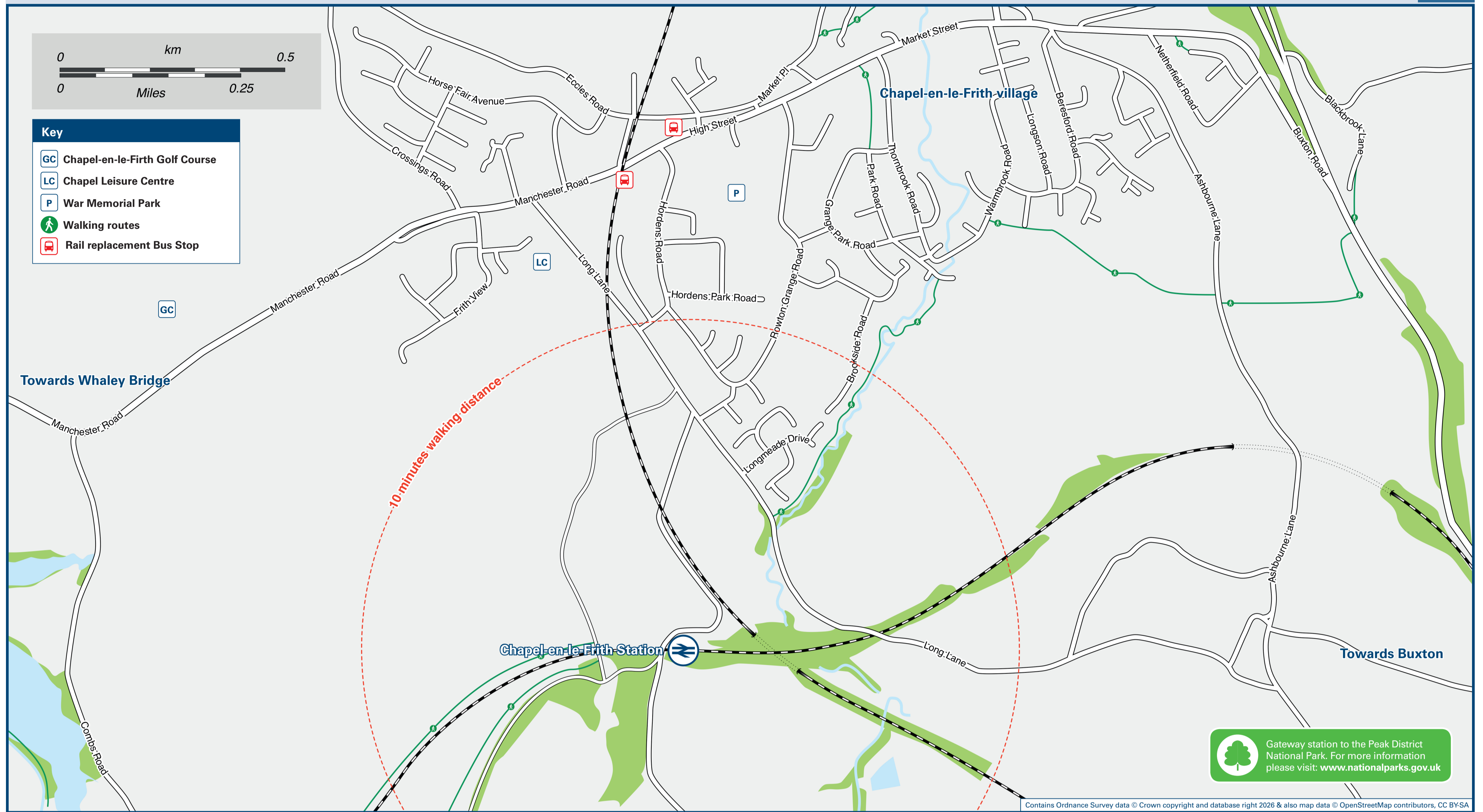




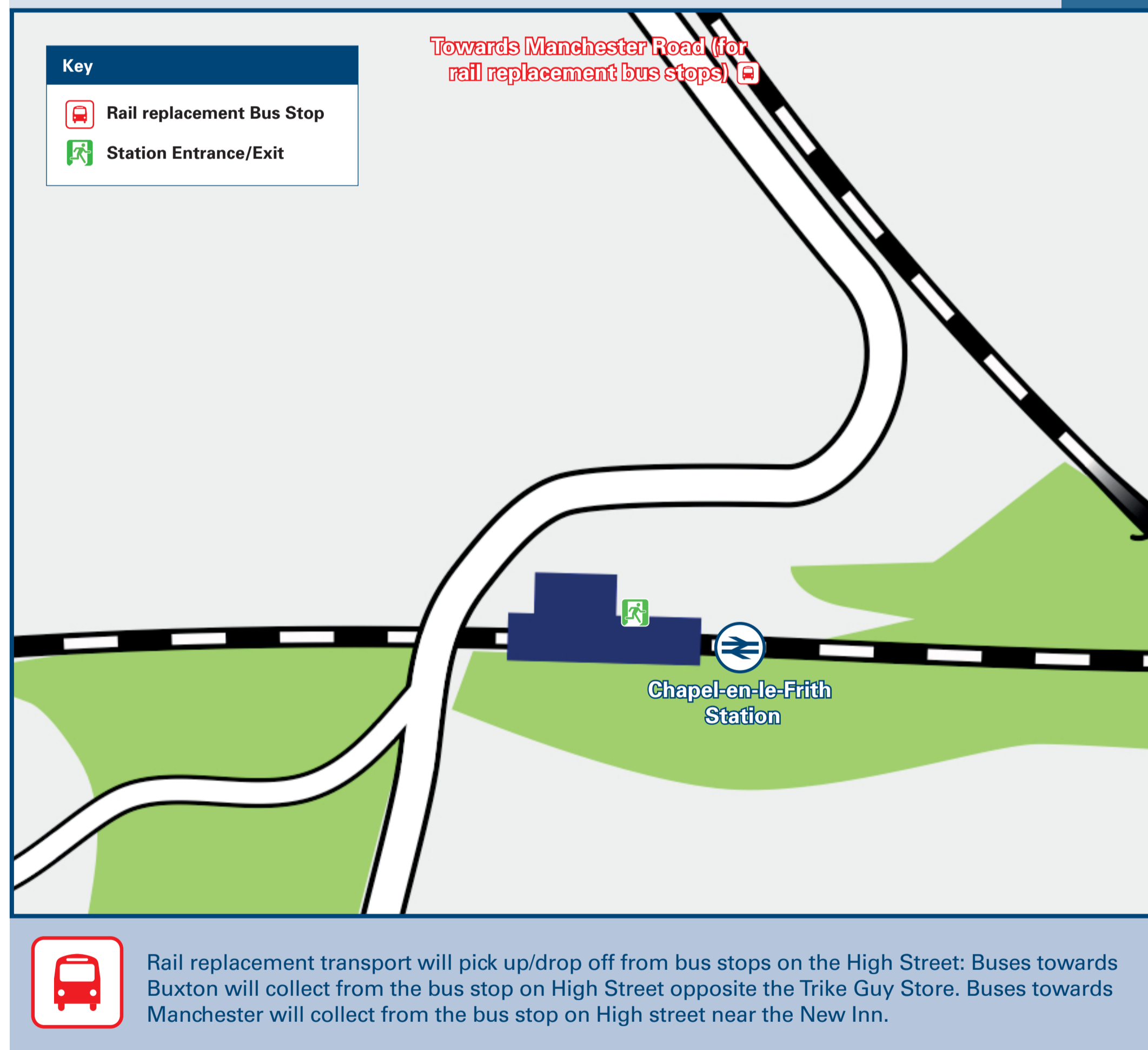
Chapel-En-Le-Frith Station

Onward Travel Information

Local area map



Station Map



Information

(Data correct at January 2026)

THERE ARE NO REGULAR BUS SERVICES CALLING AT CHAPEL-EN-LE-FRITH RAILWAY STATION

Bus route 199 runs regularly everyday from bus stops on the Manchester Road and High Street (20-25 minutes walk from this station, please see Local Area Map) With services running to: Manchester Airport, Stockport, Whaley Bridge, Dove Holes, Peak Dale and Buxton.

For bus times and days of operation please contact Traveline on www.traveline.info or call: 0871 200 22 33

National Park Peak District National Park www.peakdistrict.gov.uk

Chapel-en-le-Frith station has no taxi rank or cab office. Advance booking is essential, please consider using the following local operators: (Inclusion of this number doesn't represent any endorsement of the taxi firm)

Al's Private Hire
07854 272 571

Buxton Radio Taxis
01298 23457

TM Private Hire
01298 812 148

Further information about all onward travel

Local Cycle Info www.derbyshire.gov.uk <small>For more information about cycle routes.</small>	National Cycle Info walkwheelcycletrust.org.uk	Bus Times <small>See timetable displays at bus stops.</small> www.traveline.info 0871 200 22 33 <small>calls cost 13p per minute plus your phone company's access charge</small>	PlusBus plusbus.info <small>PlusBus is a discount price 'bus pass' that you buy with your train ticket. It gives you unlimited bus travel around your chosen town, on participating buses. Visit www.plusbus.info</small>
--	--	---	--

National Rail Enquiries

Online nationalrail.co.uk	NRE App Free National Rail Enquiries app for iOS and Android	Social Media facebook.com/nationalrailenq @nationalrailenq	Alert Me You can sign up to Alert Me messages on the National Rail Enquiries website where you can receive train and platform notifications directly to your smart phone. nationalrail.co.uk/alertme	Contact Centre 03457 48 49 50 <small>Calls cost no more than calls to geographic numbers (01 or 02) and may be recorded.</small>	PlusBike nationalrail.co.uk/plusbike <small>For more information.</small>
---	--	---	---	---	---



This poster shows details of popular destinations and main, frequent bus routes. Additional services may run, so please check with Traveline or see posters at local bus stops. Whilst considerable care has been taken to ensure the information contained on this poster is correct and accurate, National Rail cannot accept responsibility for any loss or inconvenience caused by any errors or omissions, or for loss, damage, injury or inconvenience relating to the cancellation, alteration, delay or diversion of a service. For any feedback, please e-mail comments@onwardtravelposters.com

Scan this code with your mobile for full station information.