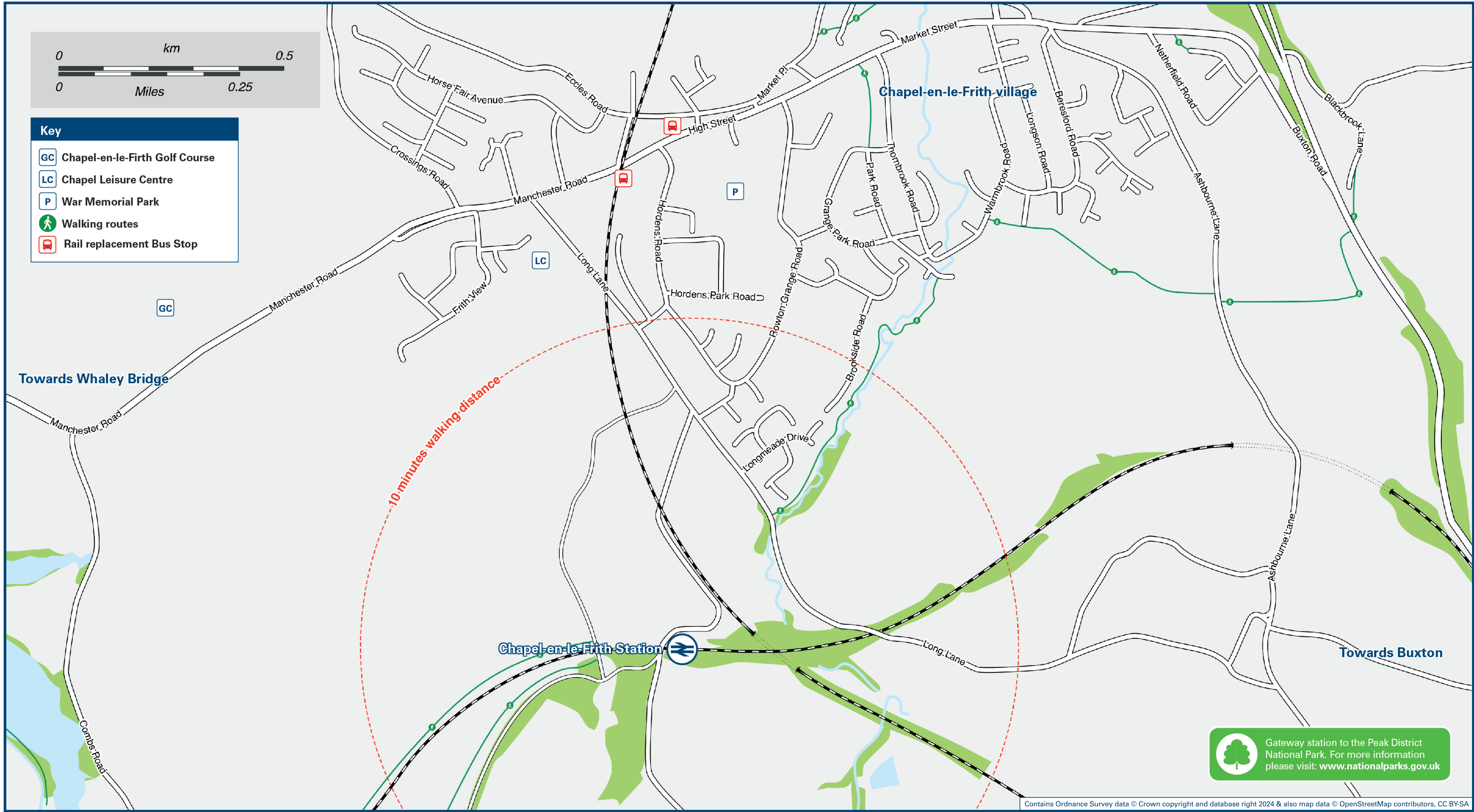




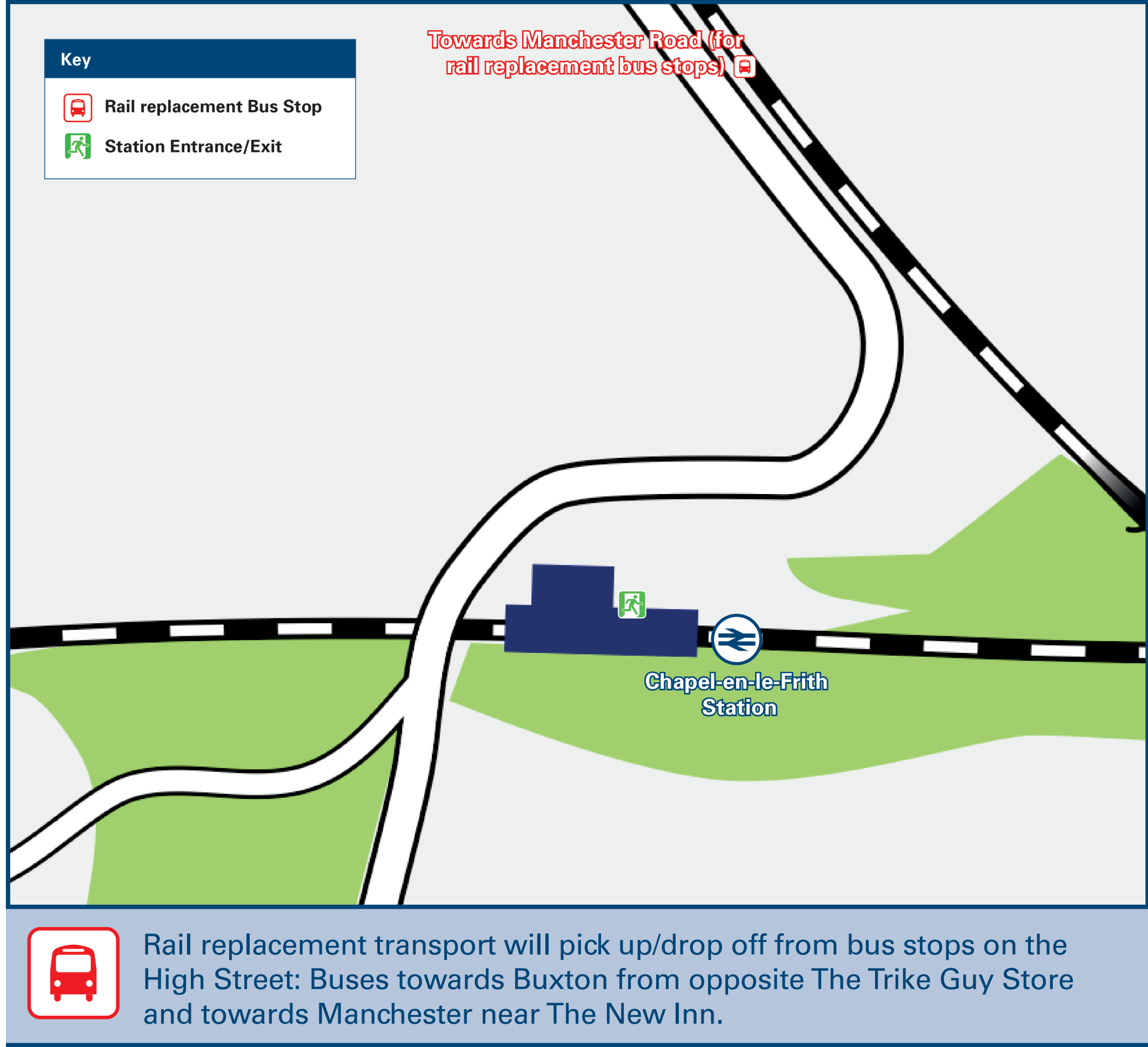
# Chapel-En-Le-Frith Station

## Onward Travel Information

### Local area map



### Station Map



### Information



**THERE ARE NO REGULAR BUS SERVICES CALLING AT CHAPEL-EN-LE-FRITH RAILWAY STATION**  
Bus route 199 runs regularly everyday from bus stops on the Manchester Road (15 minutes walk from this station) to Manchester Airport, Stockport, Whaley Bridge, Dove Holes, Peak Dale and Buxton.  
National Park Peak District National Park [www.peak-district.gov.uk](http://www.peak-district.gov.uk)

Chapel-en-le-Frith station has no taxi rank or cab office. Advance booking is essential, please consider using the following local operators: (Inclusion of this number doesn't represent any endorsement of the taxi firm)

**Al's Private Hire**  
01298 815 345

**Buxton Radio Taxis**  
01298 23457

**TM Private Hire**  
01298 812 148

### Further information about all onward travel

Local Cycle Info	National Cycle Info	Bus Times	NextBuses	PlusBus
<a href="http://www.derbyshire.gov.uk">www.derbyshire.gov.uk</a> For more information about cycle routes.	<a href="http://sustrans.org.uk">sustrans.org.uk</a> Sustrans is the UK's leading sustainable transport charity.	See timetable displays at bus stops. <a href="http://www.traveline.info">www.traveline.info</a> 0871 200 22 33 calls cost 15p per minute plus your phone company's access charge	<a href="http://www.nextbuses.com">www.nextbuses.com</a> Find the bus times for your stop. Search for a bus stop by entering a postcode, street & town or a stop name & town.	<a href="http://plusbus.info">plusbus.info</a> A discount price 'bus pass' that you buy with your train ticket. It gives you unlimited bus travel around your chosen town, on participating buses.

### National Rail Enquiries

Online	NRE App	Social Media	Alert Me	Contact Centre	PlusBike
<a href="http://nationalrail.co.uk">nationalrail.co.uk</a>	Free National Rail Enquiries app for iOS and Android	<a href="https://facebook.com/nationalrailenq">facebook.com/nationalrailenq</a> @nationalrailenq	You can sign up to Alert Me messages on the National Rail Enquiries website where you can receive train and platform notifications directly to your smart phone. <a href="http://nationalrail.co.uk/alertme">nationalrail.co.uk/alertme</a>	<b>03457 48 49 50</b> Calls cost no more than calls to geographic numbers (01 or 02) and may be recorded.	<a href="http://nationalrail.co.uk/plusbike">nationalrail.co.uk/plusbike</a> For more information.



This poster shows details of popular destinations and main, frequent bus routes. Additional services may run, so please check with Traveline or see posters at local bus stops. Whilst considerable care has been taken to ensure the information contained on this poster is correct and accurate, National Rail cannot accept responsibility for any loss or inconvenience caused by any errors or omissions, or for loss, damage, injury or inconvenience relating to the cancellation, alteration, delay or diversion of a service. For any feedback, please e-mail [comments@onwardtravelposters.com](mailto:comments@onwardtravelposters.com)

Scan this code with your mobile for full station information.