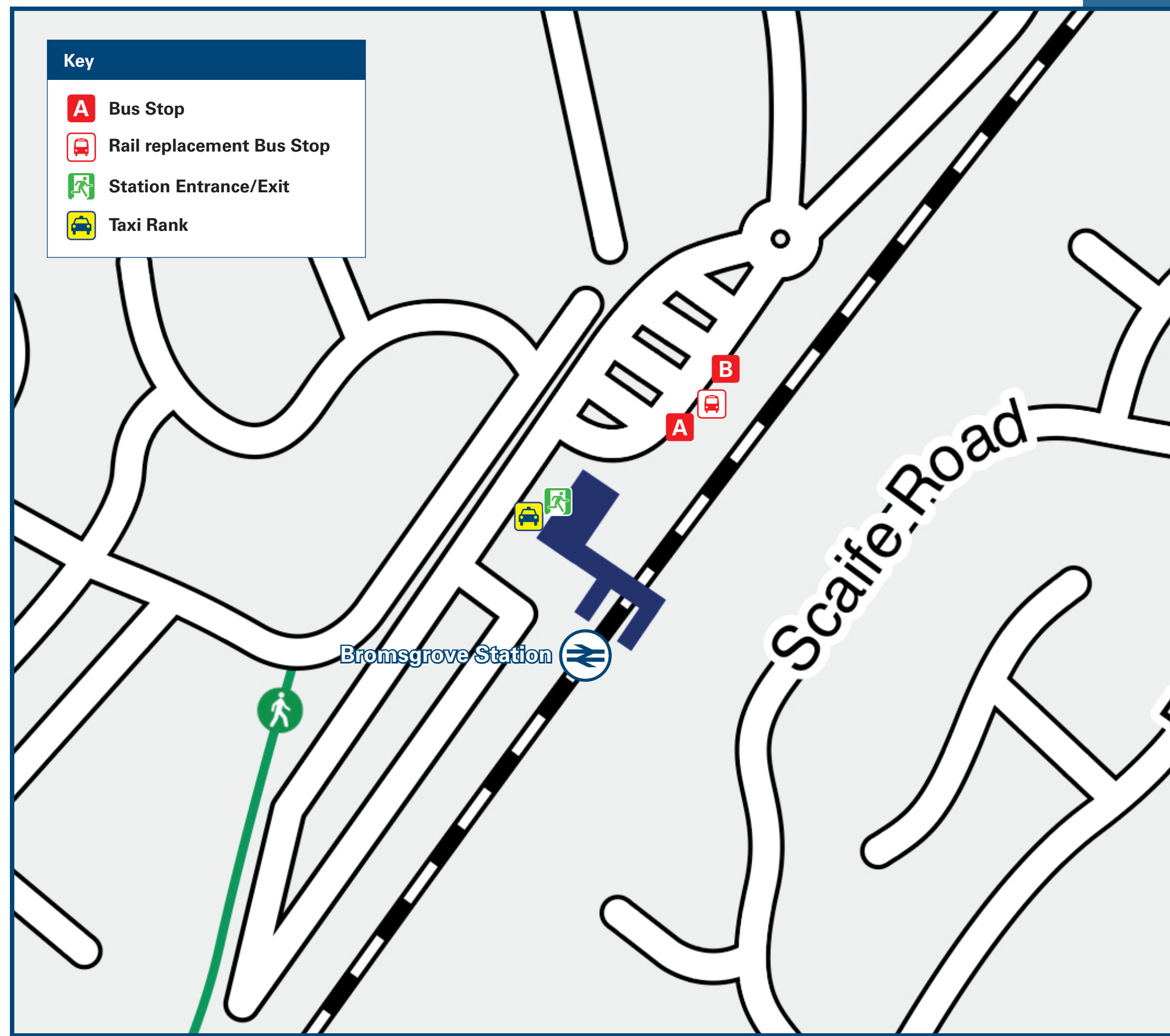




Bromsgrove Station

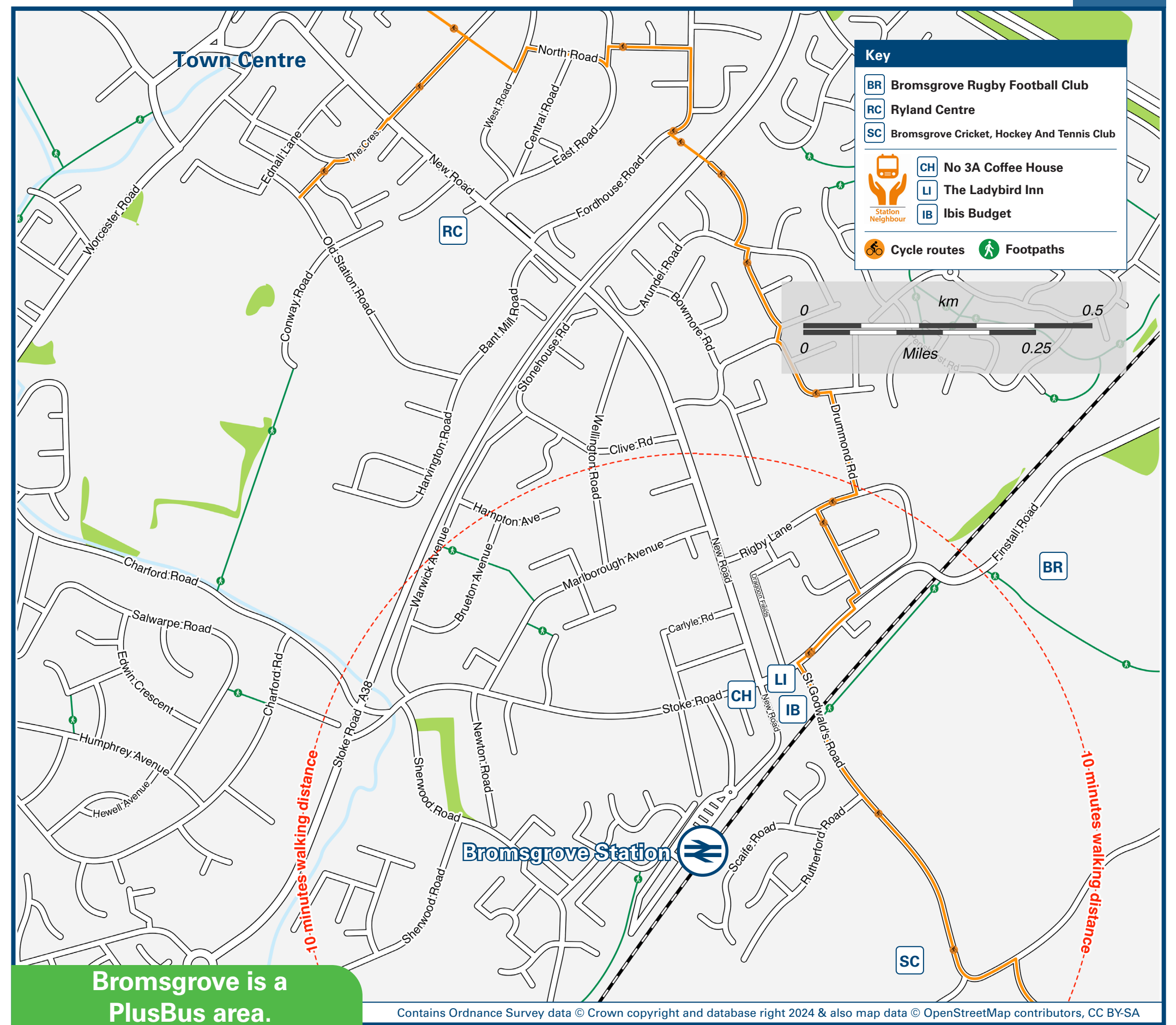
Onward Travel Information

Buses and Taxis



Rail replacement buses or coaches depart from bus stops outside the station building.

Local area map



Bromsgrove is a PlusBus area.

PlusBus is a discount price 'bus pass' that you buy with your train ticket. It gives you unlimited bus travel around your chosen town, on participating buses. Visit www.plusbus.info

Main destinations by bus

(Data correct at July 2024)



DESTINATION	BUS ROUTES	BUS STOP
Alexandra Hospital (Redditch)	52A	A
● Aston Fields Industrial Estate	145, 145A	B
Bart Green	145, 145A	A
Belbroughton	318	A
Blackwell	145, 145A	A
● Bromsgrove Town Centre (Bus Station)	52, 52A	B
	145, 145A, 147, 318	A
Burcot	145, 145A	A
● Catshill	147, 318	A
Chaddesley Corbett	52	B
● Charford	52A	B
Crofton Hackett	145, 145A	A
Droitwich Spa	145	B
Fairfield	318	A
● Finstall	52, 52A	A
Hagley	318	A

DESTINATION	BUS ROUTES	BUS STOP
Halesowen	147	A
Hewell Park	52, 52A	A
Holy Cross	318	A
Hunnington	147	A
Kidderminster	52	B
Lickey	145, 145A	A
Lickey End	145, 145A	A
Longbridge	145, 145A	A
Rashwood	145, 145A	B
Redditch	52, 52A	A
Romsley	147	A
Rubery	145, 145A	A
● Sidemoor	147, 318	A
● Stoke Heath (for Avoncroft Museum of Historic Buildings)	145, 145A	B

DESTINATION	BUS ROUTES	BUS STOP
● Stoke Prior	145, 145A	B
● Stoke Works	145, 145A	B
Stourbridge	318	A
Upton Warren (for Aztec Adventure Aqua Park)	145A	B
Webbs Garden Centre (Wychbold)	145A	B
West Hagley	318	A
Wildmoor	147	A
● Wychbold	145, 145A	B

Notes

- PlusBus destination, please see below for details.

Bus route 52 operates daily, Mondays to Saturdays and with a limited Sunday service.

Bus routes 52A, 145, 145A, 147 and 318 operate Mondays to Saturdays.

For bus times and further information, contact TraveLine on 0871 200 22 33 or Diamond Bus (for bus routes 52, 52A, 145, 145A & other local services) call 01562 561 220 or Kev's Cars and Coaches (for bus routes 147 & 318) call 0121 457 9168.

- Direct trains operate to this destination from this station.

@ Additional bus services operate from Bromsgrove Bus Station in the Town Centre, contact TraveLine for more information.

Taxis

Bromsgrove Station is served by a taxi rank or cab office. Check availability before travelling, and pre-book if necessary. Please consider using the following local operators: (Inclusion of this number doesn't represent any endorsement of the taxi firm)

BTC Budget Taxis
01527 868 000

D Line Taxis
01527 337 337

Gold-N-Black Taxis
01527 222 222

Further information about all onward travel

Local Cycle Info bromsgrove.gov.uk For more information about cycle routes.	National Cycle Info sustrans.org.uk Sustrans is the UK's leading sustainable transport charity.	Bus Times See timetable displays at bus stops. www.traveline.info 0871 200 22 33 call cost 12p per minute plus your phone company's access charge	NextBuses Find the bus times for your stop. Search for a bus stop by entering a postcode, street & town or a stop name & town.	PlusBus plusbus.info A discount price 'bus pass' that you buy with your train ticket. It gives you unlimited bus travel around your chosen town, on participating buses.
---------------------------------------------------------------------------------------------------------------------------------	---------------------------------------------------------------------------------------------------------------------------------------------------	------------------------------------------------------------------------------------------------------------------------------------------------------------------------------------------------------------------	----------------------------------------------------------------------------------------------------------------------------------------------------	----------------------------------------------------------------------------------------------------------------------------------------------------------------------------------------------

National Rail Enquiries

Online nationalrail.co.uk	NRE App Free National Rail Enquiries app for iOS and Android	Social Media facebook.com/nationalrailenq @nationalrailenq	Alert Me You can sign up to Alert Me messages on the National Rail Enquiries website where you can receive train and platform notifications directly to your smart phone. nationalrail.co.uk/alertme	Contact Centre 03457 48 49 50 Calls cost no more than calls to geographic numbers (01 or 02) and may be recorded.	PlusBike nationalrail.co.uk/plusbike For more information.
-----------------------------------------------------------------------------	------------------------------------------------------------------------	-------------------------------------------------------------------------	-------------------------------------------------------------------------------------------------------------------------------------------------------------------------------------------------------------------------------------------------------------------	--------------------------------------------------------------------------------------------------------------------------------	--------------------------------------------------------------------------------------------------------------------------



This poster shows details of popular destinations and main, frequent bus routes. Additional services may run, so please check with TraveLine or see posters at local bus stops. Whilst considerable care has been taken to ensure the information contained on this poster is correct and accurate, National Rail cannot accept responsibility for any loss or inconvenience caused by any errors or omissions, or for loss, damage, injury or inconvenience relating to the cancellation, alteration, delay or diversion of a service. For any feedback, please e-mail comments@onwardtravelposters.com

Scan this code with your mobile for full station information.