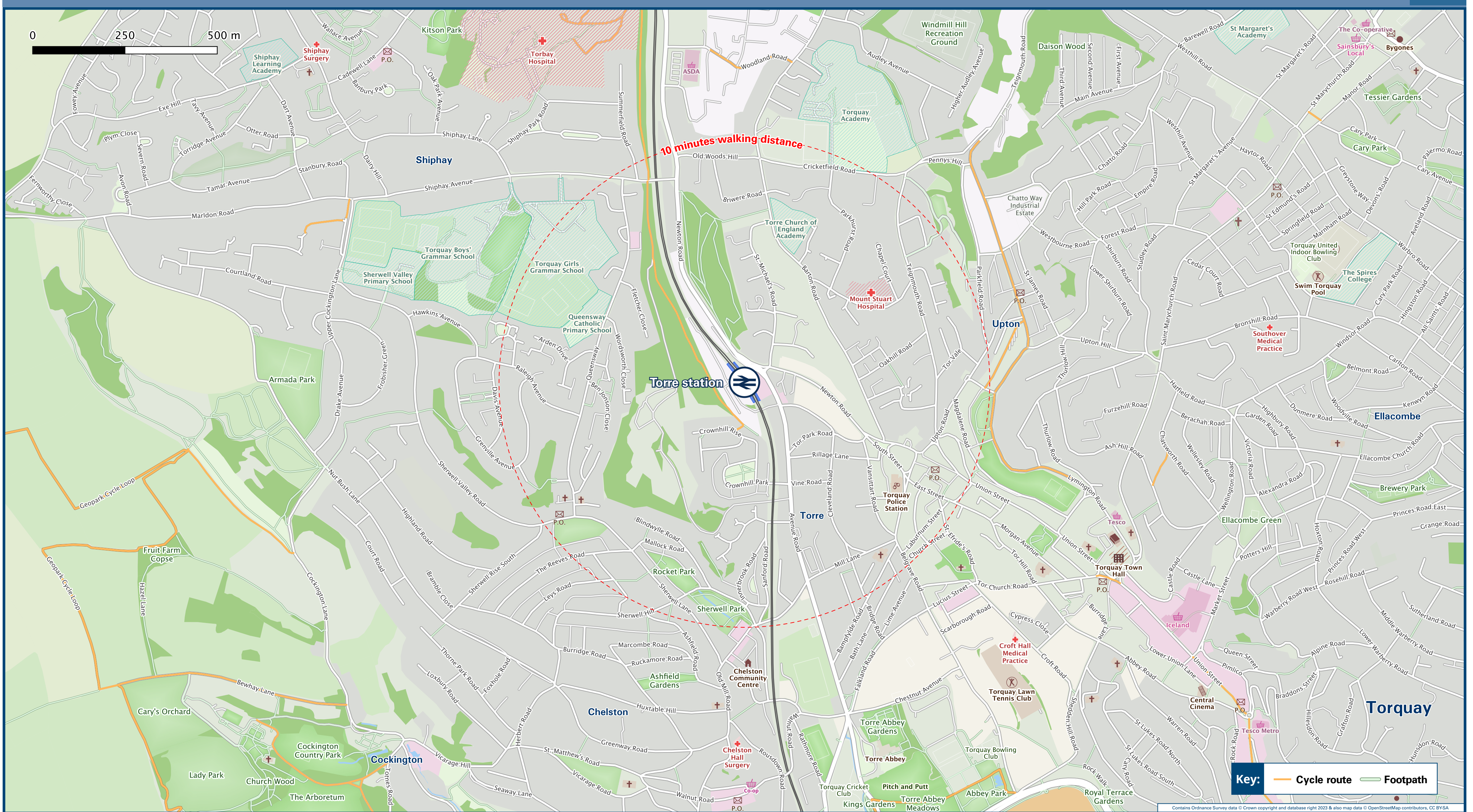




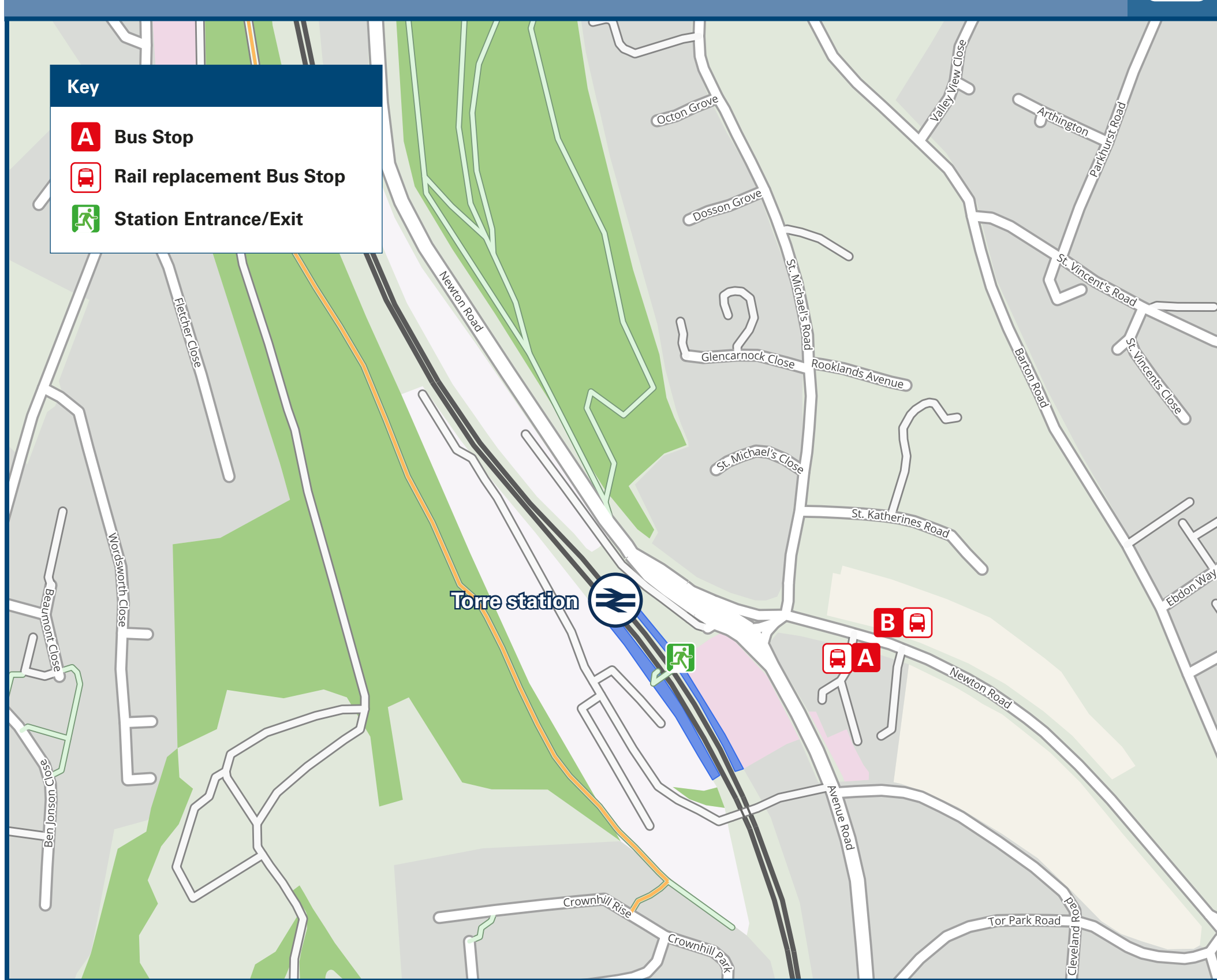
Torre Station

Onward Travel Information

Local area map



Buses



Rail replacement buses/coaches will depart from the bus stops on Newton Road opposite the Travelodge (towards Paignton), and outside the Travelodge (towards Newton Abbot).

Main destinations by bus

(Data correct at November 2023)

DESTINATION	BUS ROUTES	BUS STOP
Brixham	12	B
Churston	12	B
Edginswell (Scotts Bridge)	12	A
Goodrington	12	B
Kingskerswell	12	A
Livermead	12	B
Newton Abbot	12	A
Paignton	12	B
Preston	12	B
Shiphay (Newton Road)	12	A
The Willows Retail Park (Nicholson Road)	12	A
Torbay Hospital (Lowes Bridge)	12	A
Torquay Sea Front	12	B
Torquay Town Centre	12	B

Notes

For bus times and days of operation please see bus stop timetables or contact Traveline.
 Bus route 12 operates a daily service.
 Direct trains operate to this destination from this Station.
 Change here for the Paignton & Dartmouth Steam Railway

Taxis

Torre station has no taxi rank or cab office. Advance booking is essential, please consider using the following local operators: (Inclusion of this number doesn't represent any endorsement of the taxi firm)

Torbay Taxis
01803 211 611

Torbay Cab Co
01803 365 365

Price First Taxis
01803 322 322

Further information about all onward travel

Local Cycle Info torbay.gov.uk For more information about cycle routes.	National Cycle Info sustrans.org.uk Sustrans is the UK's leading sustainable transport charity.	Bus Times See timetable displays at bus stops. www.traveline.info 0871 200 22 33 calls cost 10p per minute plus your phone company's access charge	NextBuses.mobi Find the bus times for your stop. Search for a bus stop by entering a postcode, street & town or a stop name & town.	PlusBus plusbus.info A discount price "bus pass" that you buy with your train ticket. It gives you unlimited bus travel around your chosen town, on participating buses.
--	--	---	---	--

National Rail Enquiries

Online nationalrail.co.uk	NRE App Free National Rail Enquiries app for iOS and Android	Social Media facebook.com/nationalrailenq @nationalrailenq	Alert Me You can sign up to Alert Me messages on the National Rail Enquiries website where you can receive train and platform notifications directly to your smart phone. nationalrail.co.uk/alertme	Contact Centre 03457 48 49 50 Calls cost no more than calls to geographic numbers (01 or 02) and may be recorded.	PlusBike nationalrail.co.uk/plusbike For more information.
-------------------------------------	--	---	---	--	---



National Rail
Britain's train companies working together



This poster shows details of popular destinations and main, frequent bus routes. Additional services may run, so please check with Traveline or see posters at local bus stops. Whilst considerable care has been taken to ensure the information contained on this poster is correct and accurate, National Rail cannot accept responsibility for any loss or inconvenience caused by any errors or omissions, or for loss, damage, injury or inconvenience relating to the cancellation, alteration, delay or diversion of a service. For any feedback, please e-mail comments@onwardtravelposters.com

Scan this code with your mobile for full station information.