



Fareham Station

Onward Travel Information

Buses and Taxis



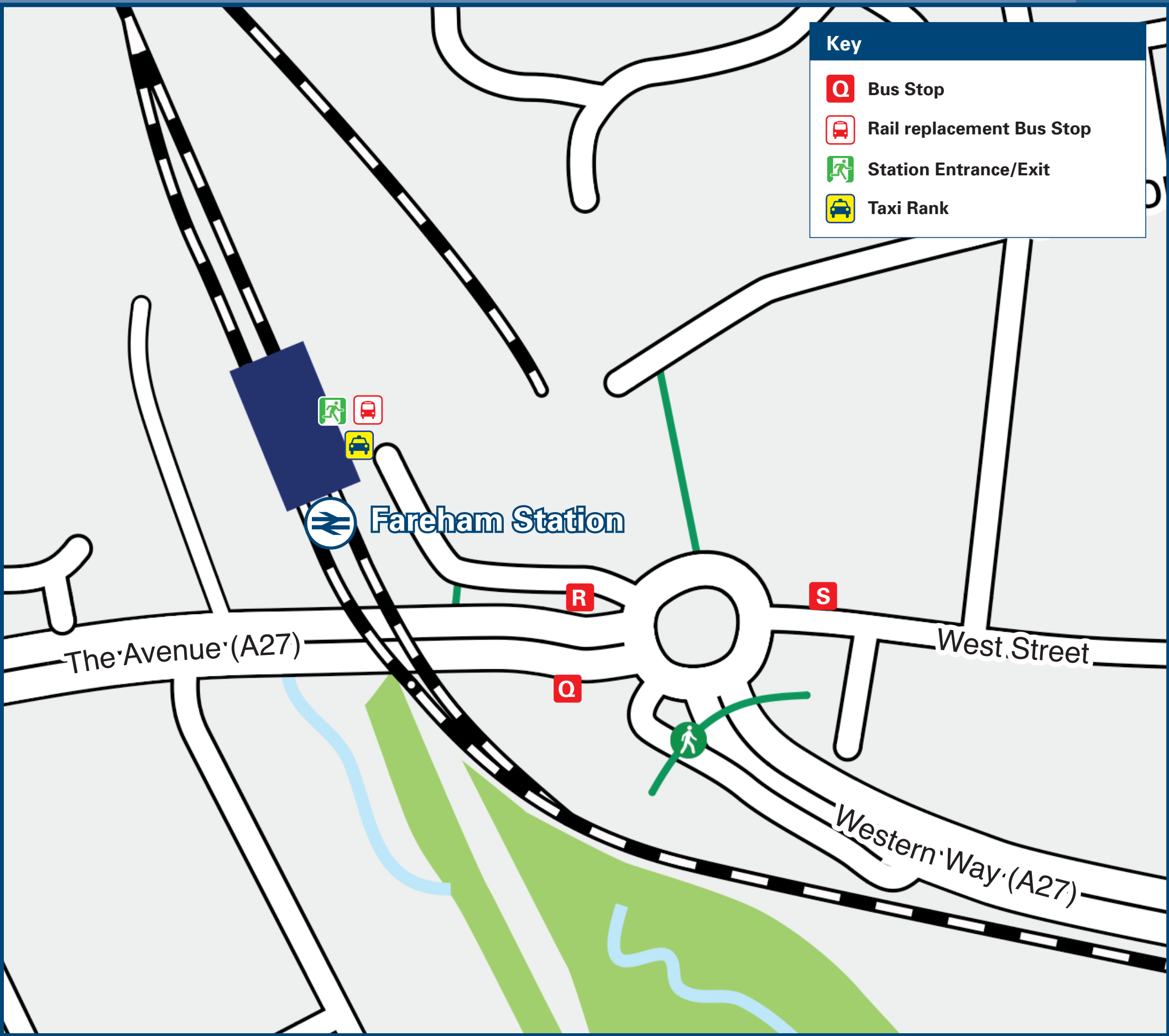
Key

Bus Stop

Rail replacement Bus Stop

Station Entrance/Exit

Taxi Rank



Rail replacement buses from the station forecourt.

Local area map



Key

Bus Station

Fareham Marina

Fareham College

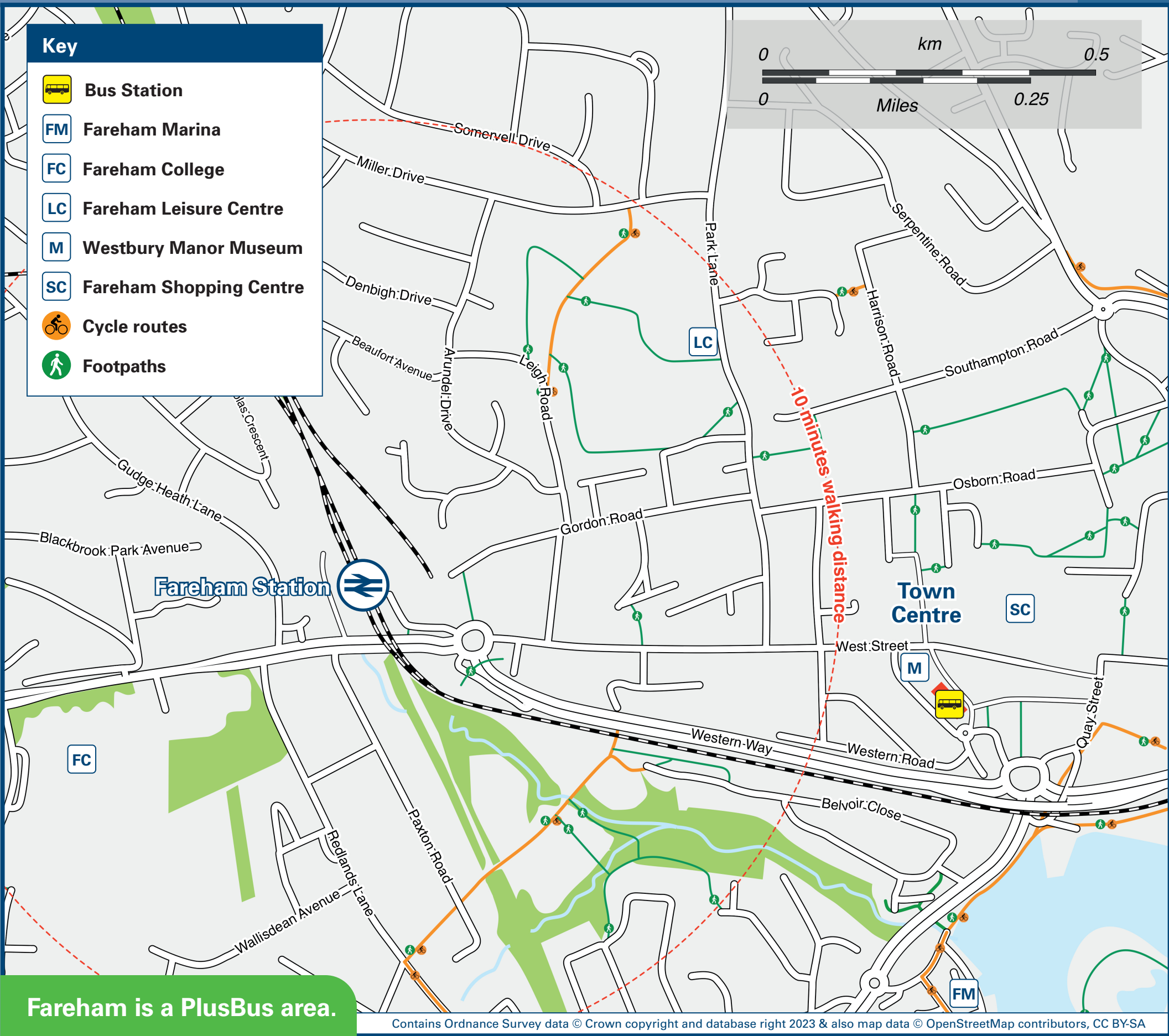
Fareham Leisure Centre

Westbury Manor Museum

Fareham Shopping Centre

Cycle routes

Footpaths



Fareham station is served by a taxi rank or cab office. Check availability before travelling, and pre-book if necessary. Please consider using the following local operators: (Inclusion of this number doesn't represent any endorsement of the taxi firm)

Main destinations by bus

(Data correct at December 2023)



DESTINATION	BUS ROUTES	BUS STOP
Alverstoke	X5	Q
Bishop's Waltham	69	S
Botley Station	28^, 28A^	Q
Bridgemary	9, 9A, E1, E2	Q
Brockhurst	E1, E2	Q
Catisfield	X4, X5, 28A	Q
Curbridge	28, 28A	Q
Elson	E1	Q
Fair Oak	69	S
Fareham (Bus Station (#) / Town Centre)	9, 9A, 28, 28A, E1, E2, X4, X5 9, 9A, 28, 28A, 69, E1, E2, X4, X5	R S
Fareham College (10 minutes walk from station)	X4, X5, 28A	Q
Fareham Community Hospital	X4+	Q
Forton	E1	Q
Funtley	20	Q
Gosport	9, 9A, E1, E2, X5	Q
Heathfield	F1, 20, 28	Q
Highlands	F1, 20, 28	Q
Hill Park	F1, 20, 28	Q
Hoeford	E1, E2	Q

DESTINATION	BUS ROUTES	BUS STOP
Knowle	20	Q
Lee-on-the-Solent	X5	Q
Locks Heath Shopping Village	X4, X5	Q
Lowford	X4, X5	Q
Park Gate (Swanwick)	X4, 28, 28A	Q
Paulsgrove	X4	R, S
Peel Common	21	Q
Portchester	X4	R, S
Portsmouth (City Centre / Victoria Park)	X4	R, S
Portsmouth (Harbour / The Hard Interchange)	X4	R, S
Rowner	9, 9A, E1	Q
Sarisbury Green	X4, X5	Q
Segensworth	28, 28A	Q
Shedfield	69	S
Stubbington	X5, 21	Q
Swanmore	69	S
Swanwick Station	28, 28A	Q
Titchfield	X4, X5	Q
Titchfield Common	X4	Q
Waltham Chase	69	S
War Memorial Hospital (Gosport)	9, 9A, E2, X5	Q

DESTINATION	BUS ROUTES	BUS STOP
Warsash Village	X5	Q
Whiteley	28, 28A	Q
Wickham	20*	Q
	69	S
Woodcot (For HMS Collingwood)	21	Q

Notes

- **PlusBus** destination, please see below for details. Bus routes 9, 9A, E1, E2, X4 and X5 operates daily, including Sundays and Bank Holidays. Bus routes 20, 28A, 69 and F1 operate Mondays to Saturdays only. Bus routes 21 and 28 operate Mondays to Fridays only. For bus times and other bus service enquiries, please contact Traveline on 0871 200 22 33 or contact the bus operator (see below): First Portsmouth, Fareham & Gosport (for all bus routes on this poster except route 69) call 0345 646 0707 or Stagecoach South (for bus route 69) call 0345 241 8000.
- ⚡ Direct trains operate to this destination from this Station.
- * Alight at Funtley Hill stop for Funtley village.
- ^ Limited journeys only to Botley station, please check the timetable.
- + Alight bus at Park Gate, A27 / Brook Lane for Fareham Community Hospital.
- (#) Bus services to most parts of Fareham, Gosport and beyond operate from Fareham Bus Station.

Taxis

Fareham is a major station where taxis are usually available on a rank. Advance booking is not normally necessary, unless arriving early in the morning or late at night. Operators who may accept bookings include: (Inclusion of this number doesn't represent any endorsement of the taxi firm)

Fareham 24-7 Taxis
01329 235 235

Radio Taxis
01329 282 282

Grab A Cab
01329 825 045

Further information about all onward travel

Local Cycle Info fareham.gov.uk For more information about cycle routes.	National Cycle Info sustrans.org.uk Sustrans is the UK's leading sustainable transport charity.	Bus Times See timetable displays at bus stops. traveline public transport info www.traveline.info 0871 200 22 33 calls cost 15p per minute plus your phone company's access charge	NextBuses mobi Download on the App Store Find the bus times for your stop. Search for a bus stop by entering a postcode, street & town or a stop name & town.	PlusBus plusbus.info A discount price 'bus pass' that you buy with your train ticket. It gives you unlimited bus travel around your chosen town, on participating buses.
--	---	--	--	--

National Rail Enquiries

Online nationalrail.co.uk	NRE App Free National Rail Enquiries app for iOS and Android	Social Media facebook.com/nationalrailenq @nationalrailenq	Alert Me You can sign up to Alert Me messages on the National Rail Enquiries website where you can receive train and platform notifications directly to your smart phone. nationalrail.co.uk/alertme	Contact Centre 03457 48 49 50 Calls cost no more than calls to geographic numbers (01 or 02) and may be recorded.	PlusBike nationalrail.co.uk/plusbike For more information.
--	---	---	--	---	--



National Rail
Britain's train companies working together

