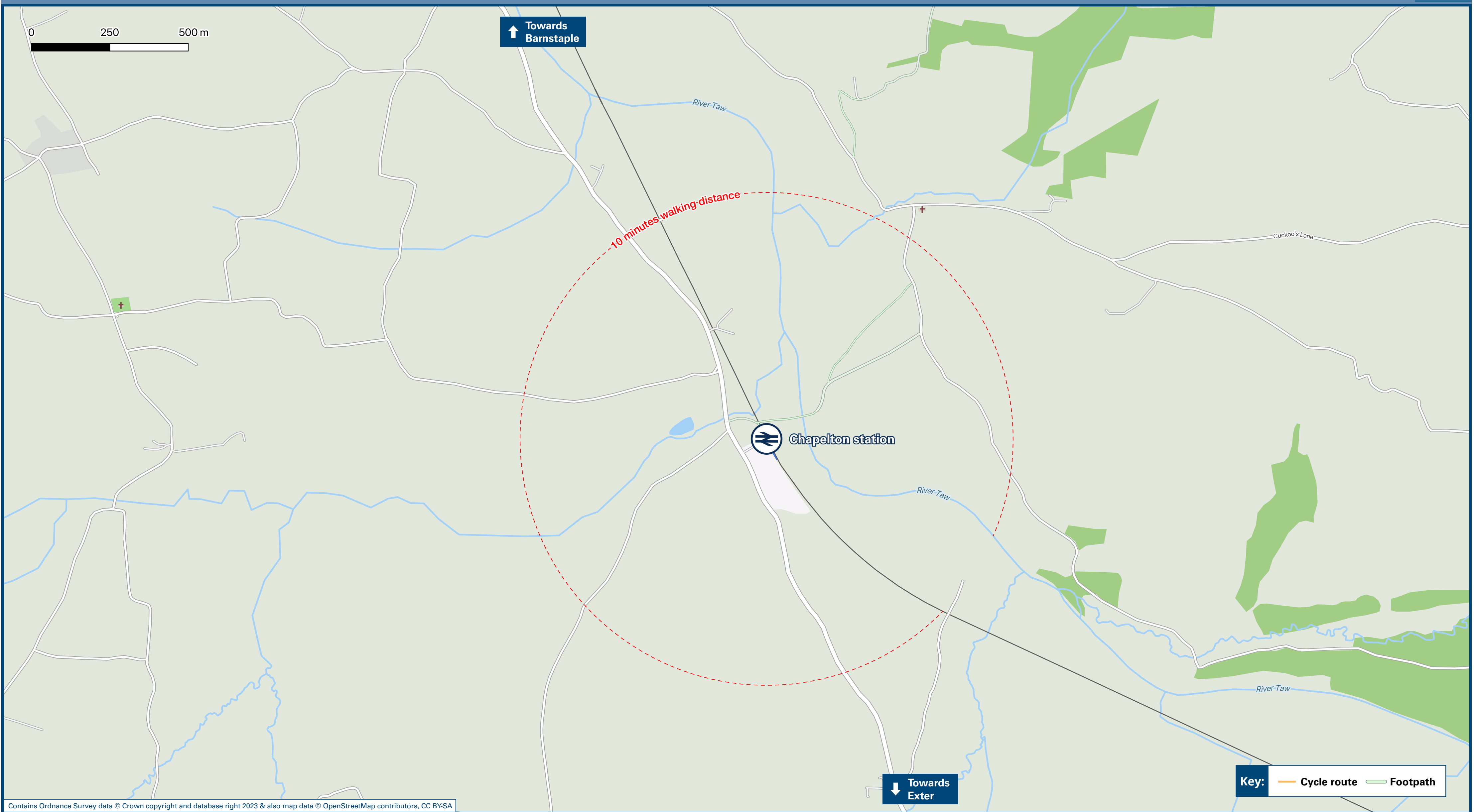




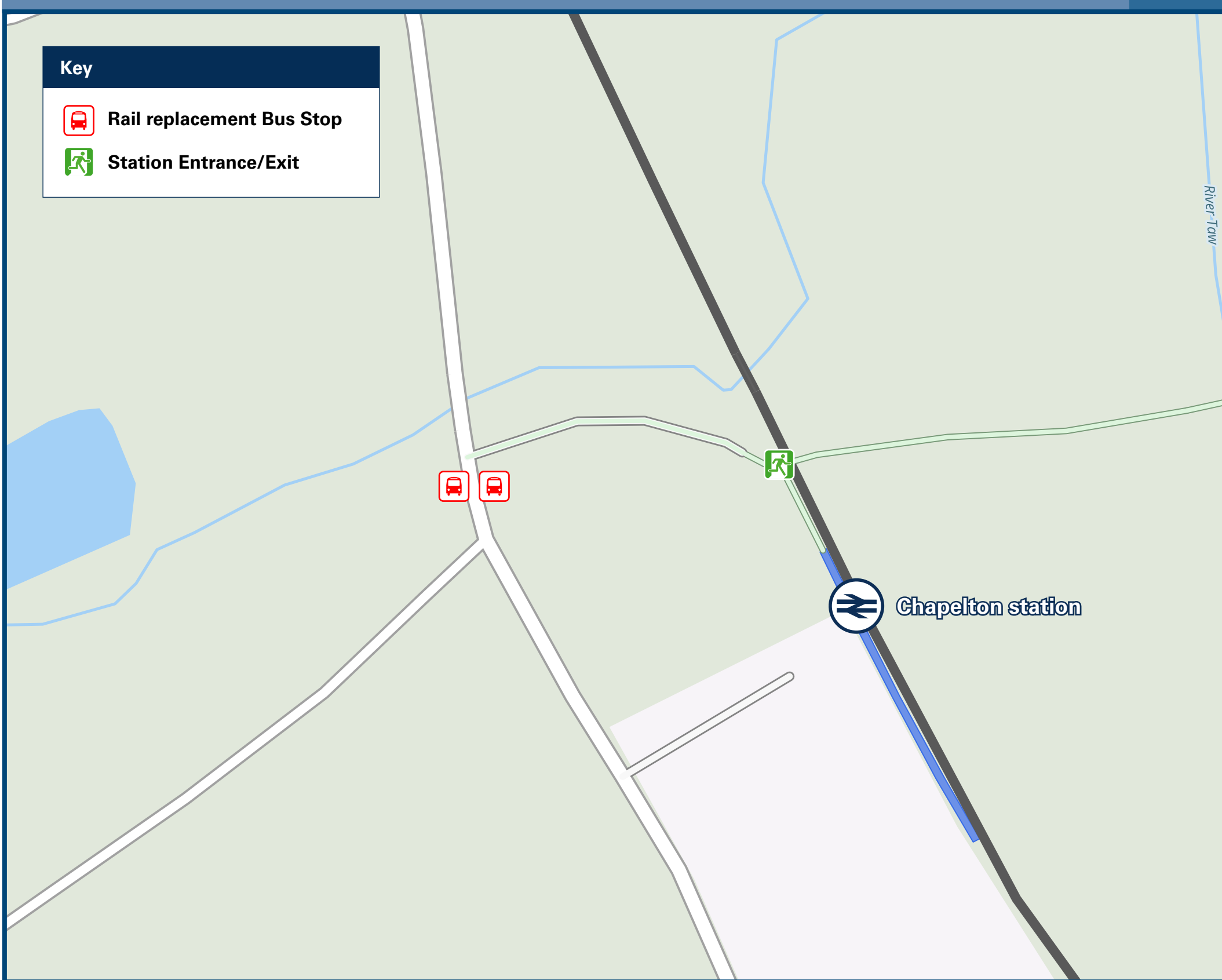
# Chapelton Station

# Onward Travel Information

## Local area map



## Station Map



Rail replacement buses/coaches will depart from outside the station entrance on the A377

## Information

(Data correct at November 2023)

### THERE ARE NO REGULAR BUS SERVICES SERVING CHAPELTON STATION

Local taxis are available as listed below: (Inclusion of this number doesn't represent any endorsement of the taxi firm)

**A1 Taxis**  
01271 322922 (Barnstaple)

**B-Line Taxis**  
01271 322117 (Barnstaple)

## Further information about all onward travel

<b>Local Cycle Info</b> <a href="http://northdevon.gov.uk">northdevon.gov.uk</a> For more information about cycle routes.	<b>National Cycle Info</b> <a href="http://sustrans.org.uk">sustrans.org.uk</a> Sustrans is the UK's leading sustainable transport charity.	<b>Bus Times</b> See timetable displays at bus stops. <a href="http://www.traveline.info">www.traveline.info</a> 0871 200 22 33 calls cost 12p per minute plus your phone company's access charge	<b>NextBuses .imobi</b>  <b>Find the bus times for your stop.</b> Search for a bus stop by entering a postcode, street & town or a stop name & town.	<b>PlusBus</b>  <b>plusbus.info</b> A discount price 'bus pass' that you buy with your train ticket. It gives you unlimited bus travel around your chosen town, on participating buses.
---	---	---	---	--

## National Rail Enquiries

<b>Online</b> <a href="http://nationalrail.co.uk">nationalrail.co.uk</a>	<b>NRE App</b> Free National Rail Enquiries app for iOS and Android	<b>Social Media</b> <a href="https://facebook.com/nationalrailenq">facebook.com/nationalrailenq</a> @nationalrailenq	<b>Alert Me</b> You can sign up to Alert Me messages on the National Rail Enquiries website where you can receive train and platform notifications directly to your smart phone. <a href="http://nationalrail.co.uk/alertme">nationalrail.co.uk/alertme</a>	<b>Contact Centre</b> <b>03457 48 49 50</b> Calls cost no more than calls to geographic numbers (01 or 02) and may be recorded.	<b>PlusBike</b>  <a href="http://nationalrail.co.uk/plusbike">nationalrail.co.uk/plusbike</a> For more information.
---	--	--	---	---	--



Whilst considerable care has been taken to ensure the information contained on this poster is correct and accurate, National Rail cannot accept responsibility for any loss or inconvenience caused by any errors or omissions, or for loss, damage, injury or inconvenience caused. For any feedback, please e-mail [comments@onwardtravelposters.com](mailto:comments@onwardtravelposters.com)

Scan this code with your mobile for full station information.